

TABLE OF CONTENTS

FROM THE EDITOR

Anchors away **652**

Before you read this, I recommend that you read the interesting article in this issue by Prakash et al, part of our Symptoms to Diagnosis series.

Brian F. Mandell, MD, PhD

THE CLINICAL PICTURE.....

A reticular eruption on the thighs **659**

During cold winter weather, the patient had been wearing an electric heating pad between the thighs.

Li-wen Zhang, MD; Juan Wu, MD; Tao Chen, MD, PhD; Rong-hua Xu, MD

1-MINUTE CONSULT

Is the *MTHFR* gene mutation associated with thrombosis? **661**

Clinicians should educate patients with this common polymorphism about the lack of evidence for associated thrombotic risk, and instead focus on modifiable risk factors for thrombosis.

Andrew Dhawan, MD, DPhil; Charis Eng, MD, PhD

1-MINUTE CONSULT

What is the role for terlipressin in hepatorenal syndrome? **664**

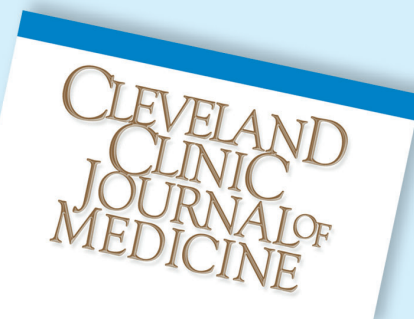
The drug is recommended as a first-line treatment of hepatorenal syndrome-related acute kidney injury, but it is associated with respiratory failure, especially in the setting of albumin administration, and certain comorbidities may increase the risk.

Stephanie N. Bass, PharmD; Aanchal Kapoor, MD; Christina C. Lindenmeyer, MD

CONTINUED ON PAGE 651

Upcoming Features

- When should patients be taking their BP medications?
- Obstructive sleep apnea: Current treatment options
- Grading the current consumer-grade wearable cardiac monitors



CONTINUED FROM PAGE 646

SYMPTOMS TO DIAGNOSIS

Elevated aminotransferases in a 62-year-old woman 669

Her medical history included gastroesophageal reflux disease and Sjögren syndrome. She had recently returned from travel to Malaysia.

Shahana Prakash, MD; Steven Moore, MD, PhD; Anthony Snow, MD; Kyle E. Brown, MD, FAASLD

REVIEW

CME | MOC

COVID-19: A management update 677

The authors examine current guidelines of the Infectious Diseases Society of America and the National Institutes of Health.

Kathryn Bash, MHSc, MSN, APRN-CNP; Gretchen Sacha, PharmD, BCCCP; Mani Latifi, MD

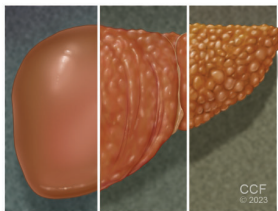
COMMENTARY

The new GFR equations: How will eliminating the race coefficient affect Black patients? 685

The authors discuss the history of equations for the glomerular filtration rate and potential clinical consequences of the new equations.

Paul Merchant, MD; Crystal Gadegbeku, MD, FAHA, FACP, FASN; Ali Mehdi, MD, Med, FACP, FASN; George Thomas, MD, FACP; Georges Nakhoul, MD, Med; Jonathan Taliercio, DO, FASN

REVIEW



Cirrhosis: Primary care approaches to screening, immunization, and lifestyle modifications 693

The authors review management of cirrhosis and complications such as esophageal varices and hepatocellular carcinoma, as well as chemical and medication exposures.

Asim Kichloo, MD; Michael Aljadah, MD; Michael Albosta, MD; Zain El-Amir, MD; Ghazaleh Goldar, MD; Muhammed Zatmar Khan, MD; Dushyant Singh Dahiya, MD; Farah Wani, MD

DEPARTMENTS

CME Calendar 657

CME/MOC Instructions 704

CME CREDIT TEST

Visit WWW.CCJM.ORG
 Test your knowledge
 of clinical topics and earn
AMA PRA Category 1 Credit™
 and **ABIM MOC points**

