



TABLE OF CONTENTS

FROM THE EDITOR

Bioterrorism: 971

An unintended boost to public health?

If anything good comes of recent events, it might be rejuvenation of America's public health system, which has languished in recent years.

J.D. CLOUGH

THE CLINICAL PICTURE

A 62-year-old man 975

with an abnormal electrocardiogram

Questions and answers on the visible signs of diseases.

C.M. RIMMERMAN

REVIEW

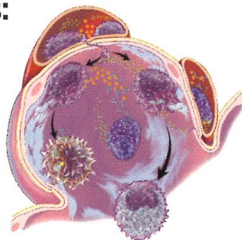
Our new understanding 977

of pulmonary alveolar proteinosis:

What an internist needs to know

Recent advances point to a defect in granulocyte-macrophage colony stimulating factor (GM-CSF) as a cause of this disease. New treatments are under study.

P. MAZZONE, M.J. THOMASSEN, AND M. KAVURU



1-MINUTE CONSULT



Brief answers 994

to specific clinical questions

When should central venous catheters 994

be changed in the intensive care unit?

Should there be a rigid time-based protocol for doing so?

The decision is made case by case rather than on a time-based protocol. Proactive strategies can reduce the risk of infection.

S.A. METTE

CONTINUED ON PAGE 974

■ The *Cleveland Clinic Journal of Medicine* is peer-reviewed and indexed in *Index Medicus*.

CLEVELAND CLINIC JOURNAL OF MEDICINE



JOHN D. CLOUGH, MD *Editor-in-Chief*
BRIAN F. MANDELL, MD, PHD *Deputy Editor*
LINDA K. HENGSTLER *Editor and Publisher*
PHILLIP E. CANUTO *Executive Editor*
RAY BORAZANIAN *Managing Editor*
DAVID A. HUDDLESTON *Manuscript Editor*
AMY SLUGG MOORE *Patient Education Editor*
BRUCE M. MARICH *Production Manager*
JOHN E. PRESSELLO *Art Director*
ROBERT J. DEMAREST *Medical Art Director*
JOSEPH A. PANGRACE *Medical Illustrator*
DAVID R. SCHUMICK *Medical Illustrator*
ERMA RICHARDSON *Department Coordinator*
IRIS OTERO *Editorial Assistant*
AUDRA HASKINS *Billing/Accounting/Reprints*

EDITORIAL ADVISORY BOARD

MUZAFFAR AHMAD, MD
WILMA FOWLER BERGFELD, MD
EMMANUEL L. BRAVO, MD
RAY W. GIFFORD, JR, MD
WILLIAM R. HART, MD
ERIC A. KLEIN, MD
FLOYD D. LOOP, MD
DOUGLAS S. MOODIE, MD
RICHARD H. NODAR, PHD
WILLIAM L. PROUDFIT, MD
WILLIAM C. SHELTON, MD
ERIC J. TOPOL, MD
HERBERT P. WIEDEMANN, MD

ASSOCIATE EDITORS

ALEJANDRO C. ARROLIGA, MD
AMJAD ALMAHAMEED, MD
DAVID BRONSON, MD
BEN H. BROUHARD, MD
WILLIAM D. CAREY, MD
WILLIAM A. CHILCOTE, MD
BRIAN A. CLARK, PHD, MD
BRIAN G. DONLEY, MD
GARY FRANCIS, MD
KATHLEEN FRANCO-BRONSON, MD
STEVEN M. GORDON, MD
BRIAN GRIFFIN, MD
GARY HOFFMAN, MD
BYRON J. HOOGWERF, MD
SYEDA R. INAMDAR, MD

MANI S. KAVURU, MD
MANDY C. LEONARD, PHARM D
ANGELO A. LICATA, MD, PHD
DAVID L. LONGWORTH, MD
STEPHEN MAHONEY, MD
MAURIE MARKMAN, MD
ATUL C. MEHTA, MD
NEIL B. MEHTA, MD
FRANKLIN A. MICHOTA, MD
STEVEN NISSEN, MD
ROBERT M. PALMER, MD
NORMAN B. RATLIFF, MD
S. SETHU K. REDDY, MD
MARK ROTH, MD
DOUGLAS SEIDNER, MD
CATHY A. SILA, MD
HOLLY L. THACKER, MD
JAMES THOMAS, MD
DONALD G. VIDT, MD
WILLIAM S. WILKE, MD
MARC WILLIAMS, MD
JAMES B. YOUNG, MD
ZOBABIR YOUNGOSSI, MD

CLEVELAND CLINIC
FOUNDATION DIVISION
OF EDUCATION
ANDREW J. FISHLER, MD
Chairman
PHILLIP R. GARD
Administrator

The *Cleveland Clinic Journal of Medicine* (ISSN 0891-1150) is published 12 times yearly by The Cleveland Clinic Foundation.

STATEMENTS AND OPINIONS expressed in the *Cleveland Clinic Journal of Medicine* are those of the authors and not necessarily of The Cleveland Clinic Foundation or its Board of Trustees.

SUBSCRIPTION RATES: U.S. and possessions: personal \$90; institutional \$113; single copy/back issue \$16. Foreign: \$113; single copy/back issue \$16. Institutional (multiple-reader rate) applies to libraries, schools, hospitals, and federal, commercial, and private institutions and organizations. Individual subscriptions must be in the names of, billed to, and paid by individuals.

POSTMASTER ADDRESS CHANGES: *Cleveland Clinic Journal of Medicine*, NA32, 9500 Euclid Avenue, Cleveland, OH 44195

SUBSCRIPTIONS, EDITORIAL, REPRINTS, BILLING/ACCOUNTING AND PRODUCTION: (same address as above) Phone (216) 444-2661 Fax (216) 444-9385 E-mail ccjm@ccf.org http://www.ccjm.org

ADVERTISING: Joseph Dennehy, Director, Sales and Marketing, 120 Castle Ridge Rd, Manhasset, NY 11030 • Phone (516) 365-8640 • Fax (516) 365-0587

AUTHORIZATION TO PHOTOCOPY items for internal or personal use is granted by the *Cleveland Clinic Journal of Medicine*, ISSN 0891-1150, published by The Cleveland Clinic Foundation, provided that the appropriate fee is paid directly to Copyright Clearance Center, 222 Rosewood Drive, Danvers, MA 01923 USA 978-750-8400. Prior to photocopying items for educational classroom use, please contact Copyright Clearance Center, Inc., at the address above. For permission to reprint material, please fax your request with complete information to the Reproduction department at CCC, fax (978) 750-4470. For further information visit CCC Online at http://www.copyright.com. To order bulk reprints, see above.

AUTHOR DISCLOSURES: This information is intended to apply to CME articles and non-CME articles that appear in the *Journal*. Current guidelines state that participants in CME activities should be made aware of any affiliation or financial interest that may affect an author's article as well as any discussion of off-label drug therapies. All authors, except those indicated with an asterisk and a footnote with the article, have disclosed that they do not have a conflict of interest or do not discuss off-label therapies.



COPYRIGHT © 2001 THE CLEVELAND CLINIC FOUNDATION PRINTED IN U.S.A.



CONTINUED FROM PAGE 972

EDITORIAL

Bioterrorism: What practicing physicians can do

998

Given the specter of biological terrorism, the medical system has much to learn and much to do to prepare.

J.C. PILE AND D.L. LONGWORTH

REVIEW

Biological and chemical terrorism: Recognition and management

1001

Future terrorist attacks might involve a variety of chemical or biological agents, including nerve agents, blistering agents, hydrogen cyanide, ricin, anthrax, smallpox, plague, and botulinum toxin. Physicians are on the front line.

T.P. NOELLER

INTERPRETING KEY TRIALS

GP IIb/IIIa inhibitors in coronary artery disease management: What the latest trials tell us

1017

Recent trials addressed whether there are clinical differences among these drugs, whether their empiric use is justified in acute coronary syndromes, and whether they might allow for early invasive management in acute coronary syndromes.

D.P. CHEW AND D.J. MOLITERNO

DEPARTMENTS

CME Calendar 996

Index to Volume 68 1024

CME Credit Test 1031


UPCOMING FEATURES

- Does your patient have lupus—or fibromyalgia?
- Effect of statin drugs on osteoporosis
- Who should be tested for hereditary hemochromatosis?
- What to do about subclinical hypothyroidism
- Caring for patients with prosthetic heart valves
- When is perioperative 'steroid coverage' necessary?
- How to avoid drug nephrotoxicity
- New approaches to sepsis
- How to diagnose pheochromocytoma

 ■ VISIT OUR WEB SITE AT [HTTP://WWW.CCJM.ORG](http://www.ccjm.org)
