



TABLE OF CONTENTS

FROM THE EDITOR

Our friend and art director Bob Demarest leaves the CCJM 663

It is with sadness, modified by appreciation, that I report that a long-time friend of the *Journal* has decided to part company with us and pursue other opportunities. J.D. CLOUGH

EDITORIAL

The case for clinical trials of noninvasive coronary imaging tests 664

IVUS, CT, and MRI show promise, but new tests, like new therapies, must undergo clinical trials. R. DETRANO

EDITORIAL

Tonsillectomy in adults: A paucity of data 669

We need to differentiate recurrent viral pharyngitis from streptococcal tonsillitis before recommending surgery. S.B. MOSSAD

REVIEW

Acne vulgaris: One treatment does not fit all 670

With a variety of topical and oral agents available, the choice of therapy can range from simple and straightforward to intense and complex. S.J. LONGSHORE AND K. HOLLANDSWORTH

REVIEW

Update on contraception: Benefits and risks of the new formulations 681

We review the new options, with emphasis on the Yasmin pill, the Lunelle injection, the Ortho Evra patch, the NuvaRing, the Mirena IUD, and emergency contraceptive kits. P. BATUR, J. ELDER, AND M. MAYER



PATIENT INFORMATION

New contraceptives for women 697

1-MINUTE CONSULT

**When does an adult need a tonsillectomy? 698**

Tonsillectomy may improve quality of life, but hard data are lacking. N. BHATTACHARYYA

CONTINUED ON PAGE 660

CLEVELAND CLINIC JOURNAL OF MEDICINE



JOHN D. CLOUGH, MD *Editor-in-Chief*
BRIAN F. MANDELL, MD, PHD *Deputy Editor*
PETER G. STUDER *Publisher*
PHILLIP E. CANUTO *Executive Editor, CCJM*
GLENN R. CAMPBELL *Executive Editor, Custom Programs*
RAY BORAZANIAN *Managing Editor*
DAVID A. HUDDLESTON *Manuscript Editor*
AMY SLUGG MOORE *Patient Education Editor*
BRUCE M. MARICH *Production Manager*
JOSEPH A. PANGRACE *Medical Illustrator*
DAVID R. SCHUMICK *Medical Illustrator*
JOSEPH KANASZ *Medical Illustrator*
IRIS TRIVILINO *Department Coordinator*
CINDY PALMER *Billing/Accounting*

EDITORIAL ADVISORY BOARD

MUZAFFAR AHMAD, MD
WILMA FOWLER BERGFELD, MD
EMMANUEL L. BRAVO, MD
WILLIAM R. HART, MD
ERIC A. KLEIN, MD
FLOYD D. LOOP, MD
DOUGLAS S. MOODIE, MD
RICHARD H. NODAR, PHD
WILLIAM L. PROUDFIT, MD
WILLIAM C. SHELDON, MD
ERIC J. TOPOL, MD
HERBERT P. WIEDEMANN, MD

ASSOCIATE EDITORS

ALEJANDRO C. ARROLIGA, MD
DAVID BRONSON, MD
WILLIAM D. CAREY, MD
BRIAN A. CLARK, PHD, MD
BRIAN G. DONLEY, MD
GARY FRANCIS, MD
KATHLEEN FRANCO-BRONSON, MD
STEVEN M. GORDON, MD
BRIAN GRIFFIN, MD
GARY HOFFMAN, MD
BYRON J. HOOGWERF, MD
MANI S. KAVURU, MD
RITA S. LEE, MD

MANDY C. LEONARD, PHARM D
ANGELO A. LICATA, MD, PHD
DAVID L. LONGWORTH, MD
MAURIE MARKMAN, MD
ATUL C. MEHTA, MD
NEIL B. MEHTA, MD
FRANKLIN A. MICHOTA, MD
STEVEN NISSEN, MD
ROBERT M. PALMER, MD
NORMAN B. RATLIFF, MD
S. SETHU K. REDDY, MD
MARK E. ROSE, MD
MARK ROTH, MD
DOUGLAS SEIDNER, MD
CATHY A. SILA, MD
HOLLY L. THACKER, MD
JAMES THOMAS, MD
DONALD G. VIDT, MD
WILLIAM S. WILKE, MD
MARC WILLIAMS, MD
JAMES B. YOUNG, MD

CLEVELAND CLINIC FOUNDATION DIVISION OF EDUCATION

ANDREW J. FISHELEDER, MD
Chairman
PHILLIP R. GARD
Administrator

REPRINTS: Marsha Fogler 1-800-482-1450 mfogler@medicalreprints.com

The *Cleveland Clinic Journal of Medicine* (ISSN 0891-1150) is published 12 times yearly by The Cleveland Clinic Foundation.

STATEMENTS AND OPINIONS expressed in the *Cleveland Clinic Journal of Medicine* are those of the authors and not necessarily of The Cleveland Clinic Foundation or its Board of Trustees.

SUBSCRIPTION RATES: U.S. and possessions: personal \$98; institutional \$124; single copy/back issue \$16. Foreign: \$124; single copy/back issue \$16. Institutional (multiple-reader rate) applies to libraries, schools, hospitals, and federal, commercial, and private institutions and organizations. Individual subscriptions must be in the names of, billed to, and paid by individuals.

POSTMASTER ADDRESS CHANGES: *Cleveland Clinic Journal of Medicine*, NA32, 9500 Euclid Avenue, Cleveland, OH 44195

SUBSCRIPTIONS, EDITORIAL, BILLING/ACCOUNTING AND PRODUCTION: (same address as above) Phone (216) 444-2661 Fax (216) 444-9385 E-mail ccjm@ccf.org <http://www.ccjm.org>

ADVERTISING: Joseph Dennehy, Director, Sales and Marketing, 120 Castle Ridge Rd, Manhasset, NY 11030 • Phone (516) 365-8640 • Fax (516) 365-0587

AUTHORIZATION TO PHOTOCOPY items for internal or personal use is granted by the *Cleveland Clinic Journal of Medicine*, ISSN 0891-1150, published by The Cleveland Clinic Foundation, provided that the appropriate fee is paid directly to Copyright Clearance Center, 222 Rosewood Drive, Danvers, MA 01923 USA 978-750-8400. Prior to photocopying items for educational classroom use, please contact Copyright Clearance Center, Inc., at the address above. For permission to reprint material, please fax your request with complete information to the Republication department at CCC, fax (978) 750-4470. For further information visit CCC Online at <http://www.copyright.com>. To order bulk reprints, see above.

DISCLAIMER: This information is provided for general medical education purposes only and is not meant to substitute for the independent medical judgment of a physician relative to the diagnostic and treatment options of a specific patient's medical condition. In no event will The Cleveland Clinic Foundation be liable for any decision made or action taken in reliance upon the information provided through this activity.



COPYRIGHT © 2003 THE CLEVELAND CLINIC FOUNDATION PRINTED IN U.S.A.



CONTINUED FROM PAGE 658

1-MINUTE CONSULT



Is there a role for metformin or acarbose as a weight-loss agent in the absence of diabetes? 702

The evidence so far indicates that neither drug can be recommended for this indication in this situation. E.S. SIRAJ

REVIEW

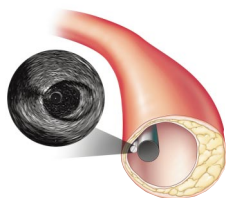
Hair loss: Diagnosis and management 705

Alopecia is distressing, and we should not underestimate its importance, either as a cosmetic problem or as a sign of a potentially serious underlying condition.

F. MULINARI-BRENNER AND W.F. BERGFELD

REVIEW

Coronary imaging: Angiography shows the stenosis, but IVUS, CT, and MRI show the plaque 713



New imaging tests can reveal information about coronary artery disease that traditional angiography cannot. P. SCHOENHAGEN, R.D. WHITE, S.E. NISSEN, AND E.M. TUZCU

REVIEW

Treat high blood pressure sooner: Tougher, simpler JNC 7 guidelines 721

In 2003, a blood pressure of 120/80 isn't normal anymore—it's *prehypertensive*. D.G. VIDT AND R.A. BORAZANIAN

IM BOARD REVIEW

A 77-year-old man with septic shock 729

A homeless man is poorly responsive, hypotensive, and febrile—and has a new heart murmur. What is the cause?

R.H. ABDELHADI AND C.M. RIMMERMAN

DEPARTMENTS

CME Calendar 720

Classified Advertisements 734



CME Self-test Online 735

- The *Cleveland Clinic Journal of Medicine* is peer-reviewed and indexed in *Index Medicus*.

UPCOMING FEATURES

- Role of ezetimibe (Zetia) in cholesterol-lowering
- Managing antibiotic resistance in the ICU
- Does this patient have Alzheimer disease?
- Heart disease and depression: The mind-body link
- How to manage asymptomatic hyperparathyroidism
- Genetic discrimination: The coming dilemma
- Pulmonary function tests made easy
- Resynchronization therapy in heart failure
- VISIT OUR WEB SITE AT [HTTP://WWW.CCJM.ORG](http://www.ccjm.org)



DEDICATED TO LIFELONG LEARNING
CLEVELAND CLINIC JOURNAL OF MEDICINE