



TABLE OF CONTENTS

FROM THE EDITOR.....

Series will emphasize practical cardiac diagnosis and management 600

Our cardiovascular board review series will provide teaching vignettes from our case files.

B.F. MANDELL

THE CLINICAL PICTURE.....

An ectopic peripherally inserted central catheter ('ectoPICC') 617

A chest radiograph shows the line to have fractured and embolized to the left pulmonary artery.

O.C. IOACHIMESCU AND J.K. STOLLER

MEDICAL GRAND ROUNDS.....

Peripheral arterial disease: Recognition and medical management 621

Peripheral arterial disease is common but has a variable presentation. It is often unrecognized and undertreated, and it increases the risk of cardiovascular events and death.

A. ALMAHAMEED

CURRENT DRUG THERAPY.....

Drug adjuncts for treating alcohol dependence 641

We have learned much about the neurochemical basis of alcohol dependence over the past 20 years, but we still have only a few drugs for treating it. We need better ones.

G.B. COLLINS, M.S. McALLISTER, AND K. ADURY

CARDIOVASCULAR BOARD REVIEW.....

An elderly woman with chest pain and shortness of breath 658

The patient was treated for myocardial infarction but became hypotensive and developed moderate respiratory distress on her third hospital day. What is the likely cause?

B.A. ROGERS, M.A. ILER, AND A.T. ASKARI

CONTINUED ON PAGE 598

CLEVELAND CLINIC JOURNAL OF MEDICINE



EDITORIAL STAFF

BRIAN F. MANDELL, MD, PhD *Editor-in-Chief*
DAVID D. K. ROLSTON, MD *Deputy Editor*
PHILLIP E. CANUTO *Executive Editor*
RAY BORAZANIAN *Managing Editor*
DAVID A. HUDDLESTON *Manuscript Editor*
JOSEPH A. PANGRACE *Medical Art Director*
AMY SLUGG MOORE *Patient Education Editor*

PUBLISHING OPERATIONS

PETER G. STUDER *Publisher*
BRUCE M. MARICH *Production Manager*
IRIS TRIVILINO *Department Coordinator*
LAURIE WEISS *Billing/Accounting*

CUSTOM PROGRAMS

GLENN R. CAMPBELL *Executive Editor*
WAYNE KUZNAR *Editorial Project Leader*
KATHY DUNASKY *Department Coordinator*

ASSOCIATE EDITORS

ALEJANDRO C. ARROLIGA, MD
ARMAN T. ASKARI, MD
MICHAEL BOLOOKI, MD
DAVID BRONSON, MD
DANIEL J. BROTMAN, MD
WILLIAM D. CAREY, MD
EIZA CHING, MD
GARY FRANCIS, MD
KATHLEEN FRANCO-BRONSON, MD
STEVEN M. GORDON, MD
BRIAN GRIFFIN, MD
GARY HOFFMAN, MD
BYRON J. HOOGWERF, MD
AMIR JAFFER, MD
GURJIT KAUR, DO
DERK W. KRIEGER, MD
MANDY C. LEONARD, PharmD
ANGELO A. LICATA, MD, PhD
ATUL C. MEHTA, MD
FRANKLIN A. MICHOTA, MD
ROBERT M. PALMER, MD

S. SETHU K. REDDY, MD

DOUGLAS SEIDNER, MD
BERNARD J. SILVER, MD
DONALD G. VIDT, MD
WILLIAM S. WILKE, MD
MARC WILLIAMS, MD

EDITORS EMERITI

JOHN D. CLOUGH, MD
HERBERT P. WIEDEMANN, MD
JAMES S. TAYLOR, MD

CLEVELAND CLINIC

DELOS M. COSGROVE, MD
President and Chief Executive Officer

CLEVELAND CLINIC DIVISION OF EDUCATION

ANDREW J. FISHELEDER, MD
Chairman
PHILLIP R. GARD
Administrator

REPRINTS: Laurie Weiss 216-444-2661 E-mail ccjm@ccf.org

Cleveland Clinic Journal of Medicine (ISSN 0891-1150) is published monthly by the Cleveland Clinic from editorial offices at 9500 Euclid Avenue, Cleveland, Ohio 44195. Application to mail at Periodicals Postage Rates is pending at Cleveland, Ohio, and at additional mailing offices. POSTMASTER: Send address changes to the *Cleveland Clinic Journal of Medicine*, NA32, 9500 Euclid Avenue, Cleveland, OH 44195

STATEMENTS AND OPINIONS expressed in the *Cleveland Clinic Journal of Medicine* are those of the authors and not necessarily of Cleveland Clinic or its Board of Trustees.

SUBSCRIPTION RATES: U.S. and possessions: personal \$103; institutional \$129; single copy/back issue \$18. Foreign: \$129; single copy/back issue \$18. Institutional (multiple-reader rate) applies to libraries, schools, hospitals, and federal, commercial, and private institutions and organizations. Individual subscriptions must be in the names of, billed to, and paid by individuals.

SUBSCRIPTIONS, EDITORIAL, BILLING/ACCOUNTING AND PRODUCTION: (same address as above) Phone (216) 444-2661 Fax (216) 444-9385 E-mail ccjm@ccf.org http://www.ccjm.org

ADVERTISING: Joseph Dennehy, Director, Sales and Marketing, 120 Castle Ridge Rd, Manhasset, NY 11030 • Phone (516) 365-8640 • Fax (516) 365-0587 E-mail JoeDennehy24@aol.com

AUTHORIZATION TO PHOTOCOPY items for internal or personal use is granted by the *Cleveland Clinic Journal of Medicine*, ISSN 0891-1150, published by The Cleveland Clinic Foundation, provided that the appropriate fee is paid directly to Copyright Clearance Center, 222 Rosewood Drive, Danvers, MA 01923 USA 978-750-8400. Prior to photocopying items for educational classroom use, please contact Copyright Clearance Center, Inc., at the address above. For permission to reprint material, please fax your request with complete information to the Reproduction department at CCC, fax (978) 750-4470. For further information visit CCC Online at http://www.copyright.com. To order bulk reprints, see above.

DISCLAIMER: This information is provided for general medical education purposes only and is not meant to substitute for the independent medical judgment of a physician relative to the diagnostic and treatment options of a specific patient's medical condition. In no event will Cleveland Clinic be liable for any decision made or action taken in reliance upon the information provided through this activity.

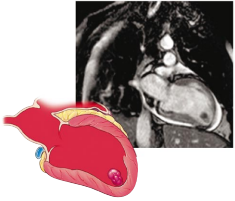
COPYRIGHT© 2006 THE CLEVELAND CLINIC FOUNDATION. ALL RIGHTS RESERVED. PRINTED IN U.S.A.





CONTINUED FROM PAGE 596

REVIEW

**MRI of the heart: Promises fulfilled?** 663

Questions remain about whether magnetic resonance imaging is the best way to evaluate patients when more traditional diagnostic techniques are inconclusive.

S. SOLA, R.D. WHITE, AND M. DESAI

REVIEW

Sinusitis: 671**Allergies, antibiotics, aspirin, asthma**

Sinusitis may not be a single entity; it is associated with many comorbid conditions, notably asthma.

C. RADOJICIC

REVIEW

Reducing the rate of amputations in acute diabetic foot infections 679

We devised a multidisciplinary approach that combines wound care, rehabilitation, prosthetics, orthotics, management of concurrent medical problems, and surveillance.

J.M. ROBBINS, B.J. NICKLAS, AND S. AUGUSTINE

PATIENT-ORIENTED EVIDENCE THAT MATTERS (POEMs)

■ **Bivalent vaccine against HPV is effective for 4.5 years** 609■ **Hot water (45°C) immersion is best for jellyfish, man-of-war stings** 612■ **Prolonged paroxetine treatment prevents recurrent depression in elderly** 614■ **Omega 3 fats do not affect mortality rates** 616

DEPARTMENTS

CME Calendar 602**Letters to the Editor** 604

Cardiorenal syndrome (May 2006),
Postoperative septic shock (supplement 1 to volume 73).

CME Self-test Online 687

UPCOMING FEATURES

- Uses and misuses of heel ultrasound data in osteoporosis
- Are statins beneficial in acute coronary syndromes?
- Women's Health Study: Are aspirin and vitamin E protective?
- Antiaging therapies: High hopes, disappointing results
- Toward rational therapy of neuropathic pain
- Migraine prophylaxis: Who and how
- When should hip fracture patients receive anticoagulation?
- Thrombocytosis: When is an incidental finding serious?

■ VISIT OUR WEB SITE AT WWW.CCJM.ORG

- The *Cleveland Clinic Journal of Medicine* is peer-reviewed and indexed in *Index Medicus*.

DEDICATED TO LIFELONG LEARNING
CLEVELAND
CLINIC
JOURNAL OF
MEDICINE