

TABLE OF CONTENTS

FROM THE EDITOR.....

The arrival of "hunt-and-peck" medicine 767

I initially had concerns when told that we would be typing all of our visit notes directly into the computer, but I was pleasantly surprised by the benefits of adopting electronic health records.

B. F. MANDELL

IM BOARD REVIEW.....

A 19-year-old man with oral ulcers, pulmonary infiltrates, and rash 773

What is the likely cause of this patient's symptoms? A self-quiz based on an actual case.

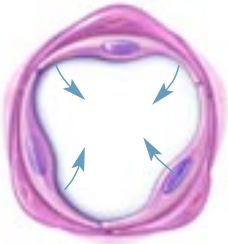
M. C. A. BUENCAMINO, S. S. GOEL, R. J. TUTHILL, AND A. TAEGE

CURRENT DRUG THERAPY.....

Treating pulmonary arterial hypertension: Cautious hope in a deadly disease 789

Advances have brought cautious hope for patients with this progressive and deadly disease. Intravenous prostanoids are still the most effective drugs for long-term treatment, but oral options are available for some patients who can be closely monitored.

O. A. MINAI AND M. M. BUDEV



REVIEW.....

Getting the iron out: Preventing and treating heart failure in transfusion-dependent thalassemia 807

Chronic accumulation of iron due to regular blood transfusions leads to heart failure and death at a very young age, but chelation can avert this fatal outcome.

D. A. JABBAR, G. DAVISON, AND A. J. MUSLIN

CONTINUED ON PAGE 764

■ The *Cleveland Clinic Journal of Medicine* is peer-reviewed and indexed in *Index Medicus*.

CLEVELAND CLINIC JOURNAL OF MEDICINE

EDITORIAL STAFF

BRIAN F. MANDELL, MD, PhD *Editor-in-Chief*
DAVID D. K. ROLSTON, MD *Deputy Editor*
PHILLIP E. CANUTO *Executive Editor*
RAY BORAZANIAN *Managing Editor*
DAVID A. HUDDLESTON *Manuscript Editor*
JOSEPH A. PANGRACE *Medical Art Director*
AMY SLUGG MOORE *Patient Education Editor*

PUBLISHING OPERATIONS

PETER G. STUDER *Publisher*
BRUCE M. MARICH *Production Manager*
IRIS TRIVILINO *Department Coordinator*
LAURIE WEISS *Billing/Accounting*

CUSTOM PROGRAMS

GLENN R. CAMPBELL *Executive Editor*
KATHY DUNASKY *Production Manager*

ASSOCIATE EDITORS

DREW ALLEN, DO
ALEJANDRO C. ARROLIGA, MD
ARMAN T. ASKARI, MD
MIHIR R. BAKHRU, MD
DAVID BRONSON, MD
DANIEL J. BROTMAN, MD
WILLIAM D. CAREY, MD
RUTH M. FARRELL, MD, MA
GARY FRANCIS, MD
KATHLEEN FRANCO-BRONSON, MD
STEVEN M. GORDON, MD
BRIAN GRIFFIN, MD
GARY HOFFMAN, MD
BYRON J. HOOGWERF, MD
AMIR JAFFER, MD
GURJIT KAUR, DO
DERK W. KRIEGER, MD
MANDY C. LEONARD, PharmD
ANGELO A. LICATA, MD, PhD
ATUL C. MEHTA, MD
FRANKLIN A. MICHOTA, MD
ROBERT M. PALMER, MD

CURTIS RIMMERMAN, MD
DOUGLAS SEIDNER, MD
BERNARD J. SILVER, MD
DONALD G. VIDT, MD
WILLIAM S. WILKE, MD
MARC WILLIAMS, MD

EDITORS EMERITI

JOHN D. CLOUGH, MD
HERBERT P. WIEDEMANN, MD
JAMES S. TAYLOR, MD

CLEVELAND CLINIC

DELOS M. COSGROVE, MD
President and Chief Executive Officer

CLEVELAND CLINIC DIVISION OF EDUCATION

ANDREW J. FISHLER, MD
Chairman
PHILLIP R. GARD
Administrator

REPRINTS: Laurie Weiss 216-444-2661 E-mail ccjm@ccf.org

Cleveland Clinic Journal of Medicine [ISSN 0891-1150 (print), ISSN 1939-2869 (online)] is published monthly by Cleveland Clinic from editorial offices at 9500 Euclid Avenue, Cleveland, OH 44195. Periodicals postage paid at Cleveland, OH, and at additional mailing offices. POSTMASTER: Send address changes to the *Cleveland Clinic Journal of Medicine*, NA32, 9500 Euclid Avenue, Cleveland, OH 44195.

STATEMENTS AND OPINIONS expressed in the *Cleveland Clinic Journal of Medicine* are those of the authors and not necessarily of Cleveland Clinic or its Board of Trustees.

SUBSCRIPTION RATES: U.S. and possessions: personal \$108; institutional \$134; single copy/back issue \$20. Foreign: \$134; single copy/back issue \$20. Institutional (multiple-reader rate) applies to libraries, schools, hospitals, and federal, commercial, and private institutions and organizations. Individual subscriptions must be in the names of, billed to, and paid by individuals.

SUBSCRIPTIONS, EDITORIAL, BILLING/ACCOUNTING, AND PRODUCTION: (same address as above) • Phone (216) 444-2661 • Fax (216) 444-9385
• E-mail ccjm@ccf.org • Web site www.ccjm.org

ADVERTISING: Joseph Dennehy, Director, Sales and Marketing, 120 Castle Ridge Rd, Manhasset, NY 11030 • Phone (516) 365-8640 • Fax (516) 365-0587
• E-mail joedennehy@verizon.net

AUTHORIZATION TO PHOTOCOPY items for internal or personal use is granted by the *Cleveland Clinic Journal of Medicine*, [ISSN 0891-1150 (print), ISSN 1939-2869 (online)], published by The Cleveland Clinic, provided that the appropriate fee is paid directly to Copyright Clearance Center, 222 Rosewood Drive, Danvers, MA 01923 USA 978-750-8400. Prior to photocopying items for educational classroom use, please contact Copyright Clearance Center, Inc., at the address above. For permission to reprint material, please fax your request with complete information to the Republication department at CCC, fax (978) 750-4470. For further information visit CCC online at www.copyright.com. To order bulk reprints, see above.

DISCLAIMER: The information in this educational activity is provided for general medical education purposes only and is not meant to substitute for the independent medical judgment of a physician relative to diagnostic and treatment options of a specific patient's medical condition. The viewpoints expressed in this CME activity are those of the authors. They do not represent an endorsement by The Cleveland Clinic Foundation. In no event will The Cleveland Clinic Foundation be liable for any decision made or action taken in reliance upon the information provided through this CME activity.

COPYRIGHT © 2007 THE CLEVELAND CLINIC FOUNDATION. ALL RIGHTS RESERVED. PRINTED IN U.S.A.



CONTINUED FROM PAGE 762

REVIEW
Testis cancer: Rare, but curable with prompt referral **817**

Even patients with distant metastases can usually be cured, but a delay in diagnosis and inadequate or inappropriate treatment increase the risk of death.

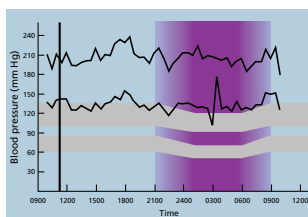
T. GILLIGAN

REVIEW
Electronic health records: A primer for practicing physicians **826**

Electronic health records have the potential to improve the quality of patient care, reduce the cost of health care, and expedite the transfer of information. Yet fewer than 20% of hospitals and physician practices now use them.

N.B. MEHTA AND M.H. PARTIN

REVIEW
Ambulatory blood pressure monitoring: An argument for wider clinical use **831**



Though ambulatory blood pressure monitoring currently has only a limited clinical role, it can be considered in many common situations, such as resistant hypertension, transplantation, pregnancy, chronic kidney disease, and dialysis.

A. PADIYAR AND M. RAHMAN

DEPARTMENTS
CME Calendar **785**

Letters to the Editor **768**
 Necrotizing soft-tissue infections (supplement 4 to volume 74, August 2007); lung cancer screening (June 2007).

CME Self-test Online **839**

UPCOMING FEATURES

- **Influenza update 2007**
- **Elderly with diabetes: Go easy, individualize treatment**
- **Sleep apnea and heart disease: Implications for clinical practice**
- **How should we screen for breast cancer?**
- **Is the 'PSA cutoff' era over?**
- **When back pain is a symptom of something serious**
- **When to order a methacholine test for asthma**

■ VISIT OUR WEB SITE AT WWW.CCJM.ORG

