

TABLE OF CONTENTS

FROM THE EDITOR..... 847
Physician, editor, and much more,
John D. Clough, MD, retires

Dr. John D. Clough, the previous Editor-in-Chief of the CCJM, is much more to all of us than the sum of his accomplishments.

B. F. MANDELL

REVIEW..... 853
Obstructive sleep apnea
and cardiovascular disease:
Implications for clinical practice

Obstructive sleep apnea is strongly associated with cardiovascular disease, but it is difficult to prove whether the association is causal.

S. KRIEGER AND S.M. CAPLES

REVIEW..... 869
Primary care diagnosis
of alpha-1 antitrypsin deficiency:
Issues and opportunities

Alpha-1 antitrypsin deficiency, which predisposes to emphysema and also to liver disease, is underrecognized. We hope to stimulate our colleagues to watch for this condition and to find ways to incorporate testing for it into regular clinical practice.

J.K. STOLLER, L. FROMER, M. BRANTLY, J. STOCKS, AND C. STRANGE

IM BOARD REVIEW..... 877
An elderly woman with asthma,
eosinophilia, and septic shock

Her asthma is poorly controlled despite prednisone therapy, and her eosinophil count is high. What is the likely cause?

D. KABIRDAS, B. AFONSO, H. AVELLA, A. KANWAR, M. BERHO, AND E. OLIVEIRA

CONTINUED ON PAGE 846

■ The *Cleveland Clinic Journal of Medicine* is peer-reviewed and indexed in *Index Medicus*.

CLEVELAND CLINIC JOURNAL OF MEDICINE

EDITORIAL STAFF

BRIAN F. MANDELL, MD, PhD *Editor-in-Chief*
 DAVID D. K. ROLSTON, MD *Deputy Editor*
 PHILLIP E. CANUTO *Executive Editor*
 RAY BORAZANIAN *Managing Editor*
 DAVID A. HUDDLESTON *Manuscript Editor*
 JOSEPH A. PANGRACE *Medical Art Director*
 AMY SLUGG MOORE *Patient Education Editor*

PUBLISHING OPERATIONS

PETER G. STUDER *Publisher*
 BRUCE M. MARICH *Production Manager*
 IRIS TRIVILINO *Department Coordinator*
 LAURIE WEISS *Billing/Accounting*

CUSTOM PROGRAMS

GLENN R. CAMPBELL *Executive Editor*
 KATHY DUNASKY *Production Manager*

ASSOCIATE EDITORS

DREW ALLEN, DO
 ALEJANDRO C. ARROLIGA, MD
 ARMAN T. ASKARI, MD
 MIHIR R. BAKHRU, MD
 DAVID BRONSON, MD
 DANIEL J. BROTMAN, MD
 WILLIAM D. CAREY, MD
 RUTH M. FARRELL, MD, MA
 GARY FRANCIS, MD
 KATHLEEN FRANCO-BRONSON, MD
 STEVEN M. GORDON, MD
 BRIAN GRIFFIN, MD
 GARY HOFFMAN, MD
 BYRON J. HOOGWEIF, MD
 AMIR JAFFER, MD
 GURJIT KAUR, DO
 DERK W. KRIEGER, MD
 MANDY C. LEONARD, PharmD
 ANGELO A. LICATA, MD, PhD
 ATUL C. MEHTA, MD
 FRANKLIN A. MICHOTA, MD
 ROBERT M. PALMER, MD

CURTIS RIMMERMAN, MD
 DOUGLAS SEIDNER, MD
 BERNARD J. SILVER, MD
 DONALD G. VIDT, MD
 WILLIAM S. WILKE, MD
 MARC WILLIAMS, MD

EDITORS EMERITI

JOHN D. CLOUGH, MD
 HERBERT P. WIEDEMANN, MD
 JAMES S. TAYLOR, MD

CLEVELAND CLINIC

DELOS M. COSGROVE, MD
President and Chief Executive Officer

CLEVELAND CLINIC DIVISION OF EDUCATION

ANDREW J. FISHLER, MD
Chairman
 PHILLIP R. GARD
Administrator

REPRINTS: Laurie Weiss 216-444-2661 E-mail ccjm@ccf.org

Cleveland Clinic Journal of Medicine [ISSN 0891-1150 (print), ISSN 1939-2869 (online)] is published monthly by Cleveland Clinic from editorial offices at 9500 Euclid Avenue, Cleveland, OH 44195. Periodicals postage paid at Cleveland, OH, and at additional mailing offices. POSTMASTER: Send address changes to the *Cleveland Clinic Journal of Medicine*, NA32, 9500 Euclid Avenue, Cleveland, OH 44195.

STATEMENTS AND OPINIONS expressed in the *Cleveland Clinic Journal of Medicine* are those of the authors and not necessarily of Cleveland Clinic or its Board of Trustees.

SUBSCRIPTION RATES: U.S. and possessions: personal \$108; institutional \$134; single copy/back issue \$20. Foreign: \$134; single copy/back issue \$20. Institutional (multiple-reader rate) applies to libraries, schools, hospitals, and federal, commercial, and private institutions and organizations. Individual subscriptions must be in the names of, billed to, and paid by individuals.

SUBSCRIPTIONS, EDITORIAL, BILLING/ACCOUNTING, AND PRODUCTION: (same address as above) • Phone (216) 444-2661 • Fax (216) 444-9385 • E-mail ccjm@ccf.org • Web site www.ccjm.org

ADVERTISING: Joseph Dennehy, Director, Sales and Marketing, 120 Castle Ridge Rd, Manhasset, NY 11030 • Phone (516) 365-8640 • Fax (516) 365-0587 • E-mail joedennehy@verizon.net

AUTHORIZATION TO PHOTOCOPY items for internal or personal use is granted by the *Cleveland Clinic Journal of Medicine*, [ISSN 0891-1150 (print), ISSN 1939-2869 (online)], published by The Cleveland Clinic, provided that the appropriate fee is paid directly to Copyright Clearance Center, 222 Rosewood Drive, Danvers, MA 01923 USA 978-750-8400. Prior to photocopying items for educational classroom use, please contact Copyright Clearance Center, Inc., at the address above. For permission to reprint material, please fax your request with complete information to the Republication department at CCC, fax (978) 750-4470. For further information visit CCC online at www.copyright.com. To order bulk reprints, see above.

DISCLAIMER: The information in this educational activity is provided for general medical education purposes only and is not meant to substitute for the independent medical judgment of a physician relative to diagnostic and treatment options of a specific patient's medical condition. The viewpoints expressed in this CME activity are those of the authors. They do not represent an endorsement by The Cleveland Clinic Foundation. In no event will The Cleveland Clinic Foundation be liable for any decision made or action taken in reliance upon the information provided through this CME activity.

COPYRIGHT © 2007 THE CLEVELAND CLINIC FOUNDATION. ALL RIGHTS RESERVED. PRINTED IN U.S.A.



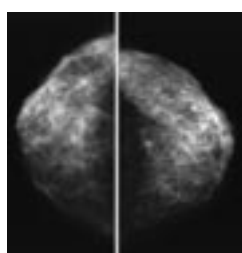
CONTINUED FROM PAGE 844

REVIEW
**Influenza update 2007–2008:
 Vaccine advances, pandemic preparation** **889**

Vaccination is still our main defense against influenza, and researchers continue to try to improve the vaccine. Work is also under way on a vaccine against the potential pandemic strain of avian influenza, H5N1.

S.B. MOSSAD

REVIEW
**How should we screen
 for breast cancer?
 Mammography, ultrasonography, MRI** **897**



Mammography remains the mainstay of breast cancer screening, but recent guidelines have included magnetic resonance imaging for some women at high risk. Ultrasonography has not been established as useful for screening.

C.F. NEMEC, J. LISTINSKY, AND A. RIM

REVIEW
**Masquerade:
 Medical causes of back pain** **905**

Some serious and life-threatening medical conditions can present as acute back pain.

E. KLINEBERG, D. MAZANEC, D. ORR, R. DEMICCO,
 G. BELL, AND R. MCLAIN

DEPARTMENTS
Letter to the Editor **848**

How should we screen for hypertension? (October 2007)

CME Calendar **888**

Correction **894**

Ambulatory blood pressure monitoring (November 2007)

Index to Volume 74 **914**

CME Self-test Online **919**

UPCOMING FEATURES

- **Elderly with diabetes:
Go easy, individualize**
- **Nephrogenic systemic fibrosis: Possible link to gadolinium contrast in MRI**
- **The STAR*D study:
Treating depression in the real world**
- **CT imaging for acute aortic syndrome**
- **Red eye for the internist:
When to treat, when to refer**
- **Preventing hemorrhage from esophageal varices**
- **Should all patients with kidney disease receive a statin?**

■ VISIT OUR WEB SITE AT WWW.CCJM.ORG

