

CLEVELAND CLINIC JOURNAL OF MEDICINE

EDITORIAL STAFF

BRIAN F. MANDELL, MD, PhD *Editor-in-Chief*
TIMOTHY GILLIGAN, MD, MS *Deputy Editor*
PHILLIP E. CANUTO *Executive Editor*
RAY BORAZANIAN *Managing Editor*
DAVID A. HUDDLESTON *Manuscript Editor*
JOSEPH A. PANGRACE *Medical Art Director*
AMY SLUGG MOORE *Patient Education Editor*

PUBLISHING OPERATIONS

PETER G. STUDER *Executive Publisher*
KRISTI THOMSEN *Exec. Editor, Special Assignments*
BRUCE M. MARICH *Production Manager*
IRIS TRIVILINO *Department Coordinator*
LAURIE WEISS *Accountant (Billing)*

CUSTOM PROGRAMS

GLENN R. CAMPBELL *Executive Editor*
KATHY DUNASKY *Production Manager*

ASSOCIATE EDITORS

ALEJANDRO C. ARROLIGA, MD
ARMAN T. ASKARI, MD
DANIEL J. BROTMAN, MD
WILLIAM D. CAREY, MD
RUTH M. FARRELL, MD, MA
GARY FRANCIS, MD
KATHLEEN FRANCO-BRONSON, MD
STEVEN M. GORDON, MD
BRIAN GRIFFIN, MD
AMIR JAFFER, MD
MANDY C. LEONARD, PharmD
ANGELO A. LICATA, MD, PhD
ATUL C. MEHTA, MD
FRANKLIN A. MICHOTA, MD
ROBERT M. PALMER, MD
HATAYA POONYAGARIYAGORN, MD
DAVID D. K. ROLSTON, MD
BERNARD J. SILVER, MD
THEODORE SUH, MD, PhD, MHSc
RACHEL M. TALIERCIO, DO

ALEXANDRA VILLA-FORTE, MD, MPH
DONALD G. VIDT, MD
WILLIAM S. WILKE, MD
MARC WILLIAMS, MD

EDITORS EMERITI

JOHN D. CLOUGH, MD
HERBERT P. WIEDEMANN, MD
JAMES S. TAYLOR, MD

CLEVELAND CLINIC

DELOS M. COSGROVE, MD
President and Chief Executive Officer

CLEVELAND CLINIC

EDUCATION INSTITUTE
BRIAN F. MANDELL, MD, PhD
Acting Chairman
PHILLIP R. GARD
Administrator

REPRINTS: Laurie Weiss 216-444-2661 E-mail ccjm@ccf.org

Cleveland Clinic Journal of Medicine [ISSN 0891-1150 (print), ISSN 1939-2869 (online)] is published monthly by Cleveland Clinic from editorial offices at 9500 Euclid Avenue, Cleveland, OH 44195. Periodicals postage paid at Cleveland, OH, and at additional mailing offices. POSTMASTER: Send address changes to the *Cleveland Clinic Journal of Medicine*, NA32, 9500 Euclid Avenue, Cleveland, OH 44195.

STATEMENTS AND OPINIONS expressed in the *Cleveland Clinic Journal of Medicine* are those of the authors and not necessarily of Cleveland Clinic or its Board of Trustees.

SUBSCRIPTION RATES: U.S. and possessions: personal \$115; institutional \$143; single copy/back issue \$20. Foreign: \$160; single copy/back issue \$20. Institutional (multiple-reader rate) applies to libraries, schools, hospitals, and federal, commercial, and private institutions and organizations. Individual subscriptions must be in the names of, billed to, and paid by individuals.

SUBSCRIPTIONS, EDITORIAL, BILLING/ACCOUNTING, AND PRODUCTION: (same address as above) • Phone (216) 444-2661 • Fax (216) 444-9385 • E-mail ccjm@ccf.org • Web site www.ccjm.org

ADVERTISING: Joseph Dennehy, Director, Sales and Marketing, 120 Castle Ridge Rd, Manhasset, NY 11030 • Phone (516) 365-8640 • Fax (516) 365-0587 • E-mail joe Dennehy@verizon.net

AUTHORIZATION TO PHOTOCOPY items for internal or personal use is granted by the *Cleveland Clinic Journal of Medicine* [ISSN 0891-1150 (print), ISSN 1939-2869 (online)], published by Cleveland Clinic, provided that the appropriate fee is paid directly to Copyright Clearance Center, 222 Rosewood Drive, Danvers, MA 01923 USA 978-750-8400. Prior to photocopying items for educational classroom use, please contact Copyright Clearance Center, Inc., at the address above. For permission to reprint material, please fax your request with complete information to the Reproduction department at CCC, fax (978) 750-4470. For further information visit CCC online at www.copyright.com. To order bulk reprints, see above.

DISCLAIMER: The information in this educational activity is provided for general medical education purposes only and is not meant to substitute for the independent medical judgment of a physician relative to diagnostic and treatment options of a specific patient's medical condition. The viewpoints expressed in this CME activity are those of the authors. They do not represent an endorsement by The Cleveland Clinic Foundation. In no event will The Cleveland Clinic Foundation be liable for any decision made or action taken in reliance upon the information provided through this CME activity.

COPYRIGHT © 2009 THE CLEVELAND CLINIC FOUNDATION. ALL RIGHTS RESERVED. PRINTED IN U.S.A.

AMM



APRIL 2009

TABLE OF CONTENTS

FROM THE EDITOR

Spring brings changes to CCJM

214

This month, we welcome our new deputy editor Dr. Timothy Gilligan and our new editorial board member Dr. Theodore Suh.

B.F. MANDELL

THE CLINICAL PICTURE

Multiple huge bullae after renal transplant

221

The patient received a kidney transplant 3 months ago and is taking immunosuppressant drugs. What is the most likely diagnosis?

M.-J. TSAI, H.-T. KUO, AND H.-C. CHEN

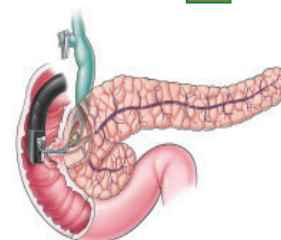
REVIEW

Endoscopic therapy of recurrent acute pancreatitis

225

Endoscopic therapy is an alternative to surgery for some patients with acute recurrent pancreatitis, ie, those whose disease is caused by gallstones or other mechanical processes that can obstruct outflow from the pancreas.

M.A. PARSI, T. STEVENS, J.A. DUMOT, AND G. ZUCCARO, JR



REVIEW

Polly can make you sick: Pet bird-associated diseases

235

Bird owners are at risk of a number of bacterial, protozoal, fungal, viral, and parasitic zoonoses. We review the presentation, evaluation, and basic treatment of these diseases.

K.S. JORN, K.M. THOMPSON, J.M. LARSON, AND J.E. BLAIR



CONTINUED ON PAGE 212

CONTINUED FROM PAGE 211

CME CREDIT REVIEW 245

What can we expect from omega-3 fatty acids?

Many patients are taking fish oil supplements, either on their own initiative or on their physicians' advice. Driving this trend is accumulating evidence that these lipids actually reduce cardiovascular risk.

E.J. CHAN AND L. CHO

CME CREDIT 1-MINUTE CONSULT 252

What is the utility of measuring the serum ammonia level in patients with altered mental status?

If you already know that the patient has decompensated liver disease, then measuring the ammonia level has little value.

H.M. ELGOUHARI AND R. O'SHEA

CURRENT DRUG THERAPY 255

Pregabalin for fibromyalgia: Some relief but no cure

How will pregabalin (Lyrica) fit into the treatment of this challenging disease?

L. KIM, S. LIPTON, AND A. DEODHAR

DEPARTMENTS 218

Letters to the editor

Barium esophagography

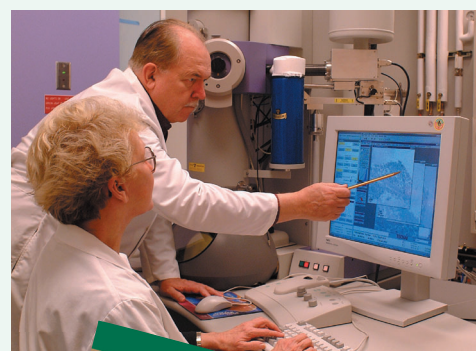
CME calendar

About our CME Self-test Online

To receive CME credit, read the selected articles in this issue and then go online to take the test. It should take about 1 hour and 30 minutes to complete this activity. Release date: April 1, 2009. Expiration date: March 31, 2010.

UPCOMING FEATURES

- **Osteoporosis: Bone quality is more than density**
- **Advance care planning: Beyond the living will**
- **Small fiber neuropathy: A burning problem**
- **Cell phone elbow**
- **When and how to image a broken rib**
- **Coronary grafting, stents, or medical therapy: Which patients benefit?**
- **Peripartum cardiomyopathy: Causes, diagnosis, and treatment**
- **Is cardiac telemetry overused?**



DEDICATED TO LIFELONG LEARNING
CLEVELAND CLINIC JOURNAL OF MEDICINE