

# TABLE OF CONTENTS

**FROM THE EDITOR** .....

**New practice guidelines:  
Constrained or enhanced by the evidence?** **136**

The new guidelines on cholesterol and hypertension are more evidence-based, but will they help improve outcomes?

B.F. MANDELL

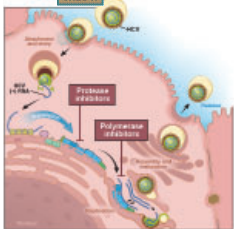
**CME CREDIT** **1-MINUTE CONSULT** .....

**Is hemoglobin A<sub>1c</sub> an accurate measure  
of glycemic control in all diabetic patients?** **146**

Regard its values with suspicion, especially when they do not agree with the patient's blood glucose levels.

F. BAZERBACHI, S. NAZARIAN, A.H. ALRAIYES, AND M.C. ALRAIES

**CME CREDIT** **CURRENT DRUG THERAPY** .....



**Hepatitis C virus:  
Here comes all-oral treatment** **159**

Direct-acting antiviral drugs open the door for an all-oral regimen, potentially eliminating the need for interferon and thus avoiding its harsh side effects.

M. DUGUM AND R. O'SHEA

**EDITORIAL** .....

**When are effective medications  
just too expensive?** **173**

Physicians may have been taught that it isn't their job to think about costs—but they should.

S.J. MEHTA AND D.A. ASCH

CONTINUED ON PAGE 135

# CLEVELAND CLINIC JOURNAL OF MEDICINE

## Online Features

### Free e-mail alerts

To receive your free e-mail Table of Contents (eTOC) when a new issue of the *Cleveland Clinic Journal of Medicine* is released, just click on "Alerts" from any page at [www.ccmj.org](http://www.ccmj.org).

It is quick and easy. All you need is your e-mail address. No other registration information is required.

### Social Networking

To post a *CCJM* article to Facebook or your favorite social networking site, just click on the icon at the bottom of any online article.



# UPCOMING FEATURES

- **Helping the victim of intimate partner violence**
- **Not all dementia is Alzheimer disease**
- **Medical consequences of eating disorders**
- **Knee surgery: No rush to repair a torn meniscus**
- **Niacin for dyslipidemia: Have we learned our lesson?**
- **Heart failure in African Americans: Overcoming the disparity**
- **Acute and critical limb ischemia: When time is limb**
- **Acute coronary syndrome: Decades of progress**



CONTINUED FROM PAGE 132

**REVIEW** .....

**New hypertension guidelines: One size fits most?** **178**



The new report is more evidence-based and focused, outlining a strategy that is simpler and, in some instances, less aggressive.

G. THOMAS, M. SHISHEBOR, D. BRILL, AND J.V. NALLY Jr

**REVIEW** .....

**Prevention and treatment of influenza in the primary care office** **189**



Fewer than half of eligible US residents get vaccinated. Here is a review of the barriers and the new options.

D.M. GOLOVYAN AND S.B. MOSSAD

**DEPARTMENTS** .....

**Letters to the Editor** **139**

Readers comment on problems with the definition of myocardial infarction (December 2013) and on the diagnosis of myasthenia gravis (November 2013).

**CME Calendar** **152**

**Directions for taking CME tests online** **200**

To receive CME credit, read any or all of the CME-certified articles in this issue (those that carry the CME logo), then go to [www.ccm.org](http://www.ccm.org) to take the test for the article or articles you select. It should take up to 1 hour to complete the activity for each article.

Release date: March 1, 2014

Expiration date: February 28, 2015