



**EDUCATIONAL OBJECTIVE:** Readers will associate electrolyte abnormalities with the specific electrocardiographic abnormalities they can cause

**CYNTHIA H. HO, MD**

Department of Pediatrics and  
Department of Internal Medicine,  
Los Angeles County and University  
of Southern California Medical  
Center, Los Angeles

**KEITH E. LEWIS, MD**

Department of Pediatrics, Division  
of Pediatric Critical Care, Los Angeles  
County and University of Southern  
California Medical Center,  
Los Angeles

**JEFFREY L. JOHNSON, MD**

Department of Pediatrics, Division  
of Pediatric Critical Care, Los Angeles  
County and University of Southern  
California Medical Center,  
Los Angeles

**LAWRENCE M. OPAS, MD**

Department of Pediatrics, Division  
of Pediatric Nephrology, Los Angeles  
County and University of Southern  
California Medical Center,  
Los Angeles

# A 20-year-old woman with fatigue and palpitations

A 20-YEAR-OLD WOMAN presents to the emergency department with fatigue and the sudden onset of palpitations. She reports no history of significant illness or surgery. She says she is not currently taking prescription or over-the-counter medications. She does not smoke, drink alcohol, or use illicit drugs.

Her weight is 52 kg (115 lb), her height is 170 cm (67 in), and her body mass index (BMI) is 18 kg/m<sup>2</sup>. Vital signs: temperature 35.7°C (96.4°F), blood pressure 92/48 mm Hg, heart rate 73 bpm, respiratory rate 5 breaths per minute, and oxygen saturation 98% on room air.

She appears tired but is alert, conversant, and cooperative. Her skin is normal, and dentition is fair. Her pulse is regular, and respirations are slow. The abdomen is soft, nontender, and flat. Strength is 4 on a scale of 5 in all extremities. Deep-tendon reflexes are 2+ and symmetric.

Electrocardiography (FIGURE 1) in the emergency department shows ST-segment depression, a prolonged corrected QT interval of 665 msec, T-wave inversion, PR prolongation, increased P-wave amplitude, and U waves.

**1** Which electrolyte abnormality is associated with this electrocardiographic picture?

- ☐ Hypercalcemia
- ☐ Hyperkalemia
- ☐ Hypocalcemia
- ☐ Hypokalemia

Hypokalemia is the likely cause of these findings. The finding of U waves is considered significant when they are inverted, merged with the T wave, or have an amplitude greater than the T wave.<sup>1</sup> U waves are best seen in the precordial leads. When severe, hypokalemia can lead to potentially fatal arrhythmias such as high-grade atrioventricular block, ventricular tachycardia, and ventricular fibrillation.<sup>2</sup>

Hyperkalemia is associated with peaked T waves, a prolonged PR interval, decreased P wave amplitude, and a widened QRS complex.<sup>2</sup> When acute and severe, hyperkalemia is associated with ventricular arrhythmia.

Hypocalcemia is associated with a prolonged QT interval and ventricular dysrhythmia, but not U waves.<sup>2</sup>

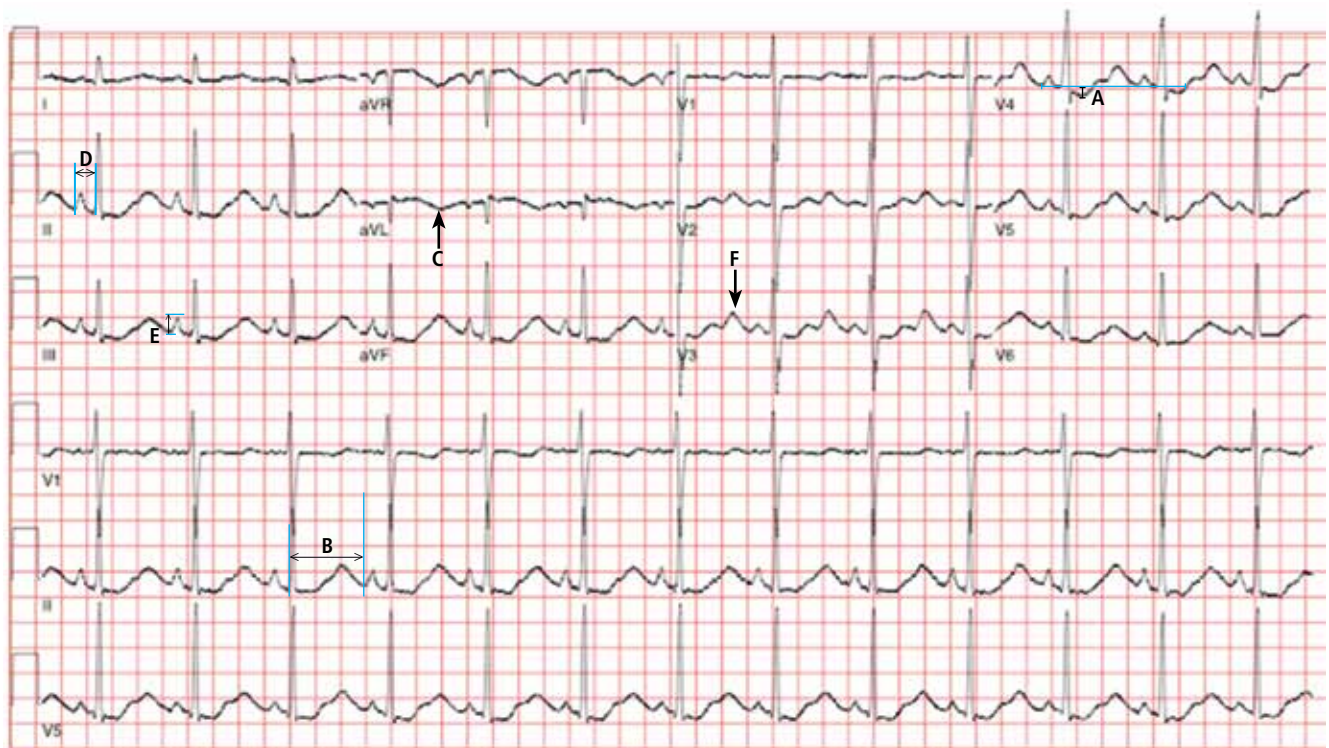
Hypercalcemia is associated with bradydysrhythmia, as well as with a shortened QT interval.<sup>2</sup>

## LABORATORY TESTING

Laboratory testing shows the following:

- Sodium 126 mmol/L (reference range 135–145)
- Potassium 1.5 mmol/L (3.5–5.1)
- Chloride 58 mmol/L (100–110)
- Bicarbonate 62 mmol/L (20–30)
- Blood urea nitrogen 16 mg/dL (7–18)
- Creatinine 0.8 mg/dL (0.5–1.0)
- Glucose 106 mg/dL (70–110)
- Ionized calcium 4.4 mg/dL (4.5–5.3)
- Magnesium 1.8 mg/dL (1.7–2.3)
- Phosphorus 4.1 mg/dL (2.5–4.5)
- Venous blood gases pH 7.56 (7.35–7.45), Pco<sub>2</sub> 69 mm Hg (35–45).

**Her vital signs:  
temp 35.7°C,  
pulse 73,  
respirations 5,  
blood pressure  
92/48 mm Hg,  
and oxygen  
saturation 98%;  
her body mass  
index is 18**



**FIGURE 1.** Electrocardiography on arrival at the hospital shows ST-segment depression (A), a prolonged QT interval (B), T-wave inversion (C), PR prolongation (D), increased P-wave amplitude (E), and U waves (F).

**If the history, physical, and medication review do not reveal the cause of hypokalemia, the patient may be hiding something**

### ■ POTASSIUM HOMEOSTASIS

Ninety-eight percent of potassium is intracellular and only 2% is extracellular.<sup>3</sup> The main cellular stores are myocytes and hepatocytes. Patients with decreased muscle mass may be at a higher risk of hypokalemia as a result of decreased skeletal muscle stores.<sup>4</sup>

The acute development of hypokalemia occurs from transcellular shifts. Alkalosis, insulin secretion, and beta-adrenergic stimulation promote the intracellular uptake of potassium. The major hormonal regulator of potassium excretion is aldosterone, which is stimulated by renal hypoperfusion and promotes potassium-ion secretion in the distal convoluted tubule.

Chronic hypokalemia develops in patients with ongoing renal or gastrointestinal potassium loss. If the cause of potassium loss is not elucidated by the history, the physical, and a review of medications, then one of two things is possible: either the patient has renal tubular disease affecting acid-base and potassium regulation, causing excessive mineralocorticoid secretion, which is associated with an abnor-

mal response to aldosterone; or the patient is not being forthcoming in the history.

**2** Which is the most likely cause of hypokalemia in this patient?

- ☐ Vomiting
- ☐ Liddle syndrome
- ☐ Bartter syndrome
- ☐ Gitelman syndrome
- ☐ Diuretic use

Her laboratory tests reveal hypokalemia and hyponatremic-hypochloremic metabolic alkalosis with compensatory respiratory acidosis. In metabolic alkalosis, the expected respiratory compensation is an increase of 0.7 mm Hg in  $P_{CO_2}$  for each 1-mEq/L increase in bicarbonate. Therefore, the expected  $P_{CO_2}$  is 67, close to the patient's actual value of 69.

Protracted vomiting with loss of gastric acid juices could be a cause of the metabolic disturbances in this young woman, although she did not mention vomiting during the history.

Liddle syndrome, or pseudoaldosteronism, is a rare autosomal dominant disorder characterized by altered renal epithelial sodium

channels, excessive sodium retention, and resultant hypertension. Hypokalemia and alkalosis are seen in Liddle syndrome, but the absence of hypertension in our patient makes Liddle syndrome unlikely.

Bartter syndrome is an inherited autosomal recessive disorder of the sodium-potassium-chloride cotransporter in the thick ascending loop of Henle, resulting in impaired reabsorption of chloride and sodium. Bartter syndrome mimics chronic loop-diuretic use and is associated with hypercalciuria. Bartter syndrome is possible in this patient; however, patients with Bartter syndrome are usually diagnosed in infancy or childhood and have evidence of growth impairment.

Gitelman syndrome is an autosomal recessive disorder of the thiazide-sensitive sodium-chloride cotransporter. Although Gitelman syndrome is more common than Bartter syndrome and presents at older ages, it is not usually associated with such profound metabolic alkalosis. Gitelman syndrome mimics chronic use of thiazide diuretics and is associated with hypocalciuria.

Diuretic use could also cause the metabolic disturbances described; however, the patient denied taking diuretics.

The most common cause of hypokalemia in clinical practice is diuretic use.<sup>4</sup> In this young woman with unexplained hypokalemia, the most likely cause is either undisclosed self-induced vomiting or diuretic abuse. The degree of metabolic alkalosis suggests vomiting, since metabolic alkalosis this severe is usually seen only with protracted vomiting. Bartter and Gitelman syndromes are included in the differential diagnosis, but they are much less common than hypokalemia associated with diuretics or self-induced vomiting.<sup>5</sup>

**3** Which test could help elucidate the cause of hypokalemia in this patient?

- ☐ Ratio of plasma aldosterone to renin
- ☐ Urine chloride
- ☐ Ratio of urinary potassium to creatinine
- ☐ Urinary anion gap and urinary pH

## ■ APPROACH TO HYPOKALEMIA

Determining the cause of hypokalemia starts with a thorough history and physical exami-

nation. The history should focus on drugs such as diuretics and laxatives. Women should be asked about their menstrual history since irregular periods may suggest an eating disorder. The physical examination should focus on signs that suggest self-induced vomiting, such as dry skin, dental erosions, enlarged parotid glands, and calluses or scars on the knuckles.

Patients with an unclear cause of hypokalemia after a thorough history and physical examination can be categorized into one of three groups based on blood pressure and acid-base status:

- Hypokalemia, hypertension, metabolic alkalosis
- Hypokalemia, normal blood pressure, metabolic acidosis
- Hypokalemia, normal blood pressure, metabolic alkalosis.

### Hypokalemia, hypertension, metabolic alkalosis

The blood pressure provides an important clue in the evaluation of hypokalemia. The combination of hypertension, hypokalemia, and alkalosis should raise concern for hyperaldosteronism or pseudoaldosteronism. Primary hyperaldosteronism from an adrenal adenoma (Conn syndrome) is characterized by a plasma aldosterone-renin ratio of greater than 20.<sup>6,7</sup> In contrast, patients with secondary hyperaldosteronism due to renovascular disease have a plasma aldosterone-renin ratio of less than 10. Patients with pseudoaldosteronism have low aldosterone and renin levels and hypertension. Since our patient has a normal blood pressure, testing the plasma aldosterone and renin levels would not help determine the cause of her hypokalemia.

### Hypokalemia, normal blood pressure, metabolic acidosis

Patients with normal blood pressure, hypokalemia, and normal plasma anion gap acidosis either have renal tubular acidosis or have lost potassium because of diarrhea or laxative abuse. In a patient who denies taking laxatives or denies a history of diarrhea, checking the urinary anion gap and urinary pH may help differentiate the cause of acidosis and hypokalemia.

The urinary anion gap, calculated by the equation  $\text{sodium} + \text{potassium} - \text{chloride}$ , is an

**The most common cause of hypokalemia seen in clinical practice is diuretic use**



**TABLE 1**

**An approach to determining the cause of hypokalemia**

**Review history and medications**

Renal potassium loss: diuretics, cisplatin, amphotericin B  
Extrarenal potassium loss: vomiting, laxatives, cutaneous loss from burns, excessive exercise, use of "sauna suits"

**Look at blood pressure**

Elevated blood pressure suggests primary or secondary hyperaldosteronism (or pseudoaldosteronism)

**Look at acid-base status**

Acidosis suggests renal tubular acidosis  
Alkalosis suggests Bartter syndrome, Gitelman syndrome, or hyperaldosteronism

**Check urinary potassium-creatinine ratio when the site of potassium loss is unclear**

Renal loss: ratio > 15  
Extrarenal loss: ratio < 15

**Check plasma aldosterone-renin ratio in patients with hypertension**

Ratio > 20 suggests primary hyperaldosteronism  
Ratio < 10 suggests secondary hyperaldosteronism

**Check urinary chloride in patients with metabolic alkalosis**

Low urinary chloride (< 10 mmol/L) suggests volume contraction  
High urinary chloride (> 10 mmol/L) suggests renal chloride loss from hyperaldosteronism, diuretic use, Bartter or Gitelman syndrome

**Check urinary anion gap and urinary pH in patients with normal anion gap metabolic acidosis**

A negative anion gap suggests gastrointestinal or renal loss of bicarbonate (type II or proximal renal tubular acidosis)  
A urinary pH greater than 5.5 in the setting of acidosis suggests impaired ability of the kidneys to acidify urine and raises the possibility of renal tubular acidosis

indirect estimate of hydrogen excretion in the form of ammonium ion<sup>8</sup>; the normal value is 0 to 10 mEq/L. A negative value represents increased hydrogen excretion in response to systemic acidosis from gastrointestinal or renal loss of bicarbonate (proximal renal tubular acidosis). A urinary pH greater than 5.5 in the setting of systemic acidosis suggests impaired ability of the kidneys to acidify urine and raises the possibility of renal tubular acidosis.

This patient has metabolic alkalosis, so calculation of the urinary anion gap would not be helpful.

**Hypokalemia, normal blood pressure, metabolic alkalosis**

Patients such as ours, with normal blood pressure, hypokalemia, and alkalosis, have been vomiting, have used diuretics, or have an inherited renal tubulopathy such as Bartter or Gitelman syndrome. Usually, differentiating Bartter and Gitelman syndromes from chronic vomiting or diuretic use is done with the history and physical examination. However, in patients with a questionable history and a lack of findings on physical examination, checking the urinary chloride, potassium, calcium, and creatinine may be helpful.

A urinary potassium-creatinine ratio greater than 15 suggests renal loss, whereas a ratio less than 15 suggests extrarenal loss.<sup>9</sup>

Patients who are taking a diuretic or who have Bartter or Gitelman syndrome have a high urinary chloride concentration, ie, greater than 20 mmol/L, whereas patients with hypokalemia and alkalosis from chronic vomiting tend to have a concentration less than 10 mmol/L.<sup>10</sup>

TABLE 1 summarizes an approach to the evaluation of unexplained hypokalemia based on blood pressure and acid-base status.

**■ A HIDDEN HISTORY**

On further questioning, the patient admits to an 8-year history of daily self-induced vomiting in an attempt to lose weight, in addition to multiple hospitalizations for hypokalemia and a previous diagnosis of an eating disorder.

**■ INITIAL MANAGEMENT OF HYPOKALEMIA**

The initial management of hypokalemia should focus on life-threatening emergencies. While patients with potassium levels greater than 3 mmol/L are usually asymptomatic, those with levels below 3 mmol/L present with muscle weakness and rhabdomyolysis.<sup>4</sup> An acute drop in serum potassium to less than 2 mmol/L is associated with respiratory muscle weakness and ventricular arrhythmias.<sup>4</sup> If the patient has cardiac symptoms or hypoventilation due to respiratory muscle weakness, continuous monitoring in the intensive care unit and aggressive therapy are warranted.

**4** Which potassium formulation is most appropriate for the treatment of hypokalemia in this patient?

- ☐ Potassium chloride
- ☐ Potassium phosphate
- ☐ Potassium acetate

Oral potassium is preferable in patients with a serum potassium above 2.5 mmol/L.<sup>4,11</sup> Potassium phosphate should be used when supplementation with both potassium and phosphorus is needed. Potassium acetate should be reserved for patients with acidosis and hypokalemia. Otherwise, potassium chloride is typically preferred.<sup>4,12</sup> It comes in liquid and tablet forms. Liquid forms have an unpleasant taste, whereas tablets are usually well tolerated. No more than 20 to 40 mEq of potassium chloride tablets should be given at a time, since higher doses are associated with gastrointestinal mucosal injury.<sup>12</sup>

Potassium chloride is particularly preferred in patients with metabolic alkalosis, since increased chloride intake and delivery to the distal tubule increases the expression of pendrin, a luminal chloride and bicarbonate exchanger in the cortical collecting duct.<sup>13</sup> With metabolic alkalosis, increased excretion of bicarbonate occurs through up-regulation of pendrin. Potassium depletion down-regulates pendrin.<sup>13</sup> Additionally, correction of metabolic alkalosis increases serum potassium by movement of potassium from the intracellular to the extracellular space.

Intravenous potassium should be reserved for patients with severe hypokalemia (< 2.5 mmol/L) or significant arrhythmias.<sup>11</sup> Oral and intravenous potassium can safely be given simultaneously.<sup>11</sup> The intravenous rate should not exceed more than 10 to 20 mEq of potassium chloride per hour unless the patient has a life-threatening arrhythmia, respiratory failure, or severe hypokalemia.<sup>14,15</sup> In life-threatening situations, a femoral line should be placed, and potassium should be given as rapidly as 20 mEq over 15 to 20 minutes.<sup>14</sup>

Cannulation of the subclavian and internal jugular veins should be avoided in severe hypokalemia since mechanical irritation from guidewire placement can provoke ventricular arrhythmias.<sup>14</sup>

During intravenous administration of potassium, laboratory monitoring after every 20 mEq of potassium chloride is advised because of the possibility of rebound hyperkalemia. In patients with severe hypokalemia, avoidance of factors that can worsen intracellular shift of potassium is also important. Avoid dextrose-containing fluids to prevent insulin-induced shifting of potassium into cells. Restore intravascular volume to blunt hypovolemia-induced renin and aldosterone secretion. If a patient presents with severe hypokalemia and acidosis, correct the hypokalemia before the acidosis to avoid intracellular shift of potassium.

## ■ OUR PATIENT'S MANAGEMENT AND FOLLOW-UP PLAN

Given the severity of our patient's hypokalemia and her complaint of palpitations, she was admitted to the hospital for monitoring. She required 180 mEq of intravenous potassium chloride and 140 mEq of oral potassium chloride during the first 24 hours in order to achieve a serum potassium level above 3 mmol/L. Electrocardiographic U waves resolved once the level was above 2 mmol/L, and ST depressions resolved once it was above 3 mmol/L. The QT interval normalized after 24 hours of hospitalization.

On discharge, she was prescribed oral potassium chloride 40 mEq daily and magnesium sulfate 400 mg twice daily, with plans for a follow-up visit with her outpatient therapy team, which includes a psychiatrist, a social worker, and her primary care provider. She declined a referral for inpatient therapy but agreed to a goal of decreasing the frequency of induced vomiting and outpatient visits. She was also educated on how and when to access emergency medical care.<sup>16</sup> ■

**When giving IV potassium chloride, measure the potassium every 20 mEq to avoid rebound hyperkalemia**

## ■ REFERENCES

1. Rautaharju PM, Surawicz B, Gettes LS, et al; American Heart Association Electrocardiography and Arrhythmias Committee, Council on Clinical Cardiology; American College of Cardiology Foundation; Heart Rhythm Society. AHA/ACCF/HRS recommendations for the standardization and interpretation of the electrocardiogram: part IV: the ST segment, T and U waves,

and the QT Interval: a scientific statement from the American Heart Association Electrocardiography and Arrhythmias Committee, Council on Clinical Cardiology; the American College of Cardiology Foundation; and the Heart Rhythm Society. Endorsed by the International Society for Computerized Electrocardiology. *J Am Coll Cardiol* 2009; 53:982–991.

2. **Diercks DB, Shumaik GM, Harrigan RA, Brady WJ, Chan TC.** Electrocardiographic manifestations: electrolyte abnormalities. *J Emerg Med* 2004; 27:153–160.
3. **Unwin RJ, Luft FC, Shirley DG.** Pathophysiology and management of hypokalemia: a clinical perspective. *Nat Rev Nephrol* 2011; 7:75–84.
4. **Gennari FJ.** Hypokalemia. *N Engl J Med* 1998; 339:451–458.
5. **Mehler PS.** Clinical practice. Bulimia nervosa. *N Engl J Med* 2003; 349:875–881.
6. **Tzanela M, Effraimidis G, Vassiliadi D, et al.** The aldosterone to renin ratio in the evaluation of patients with incidentally detected adrenal masses. *Endocrine* 2007; 32:136–142.
7. **Diederich S, Mai K, Bähr V, Helffrich S, Pfeiffer A, Perschel FH.** The simultaneous measurement of plasma-aldosterone- and -renin-concentration allows rapid classification of all disorders of the renin-aldosterone system. *Exp Clin Endocrinol Diabetes* 2007; 115:433–438.
8. **Goldstein MB, Bear R, Richardson RM, Marsden PA, Halperin ML.** The urine anion gap: a clinically useful index of ammonium excretion. *Am J Med Sci* 1986; 292:198–202.
9. **Groeneveld JH, Sijpkens YW, Lin SH, Davids MR, Halperin ML.** An approach to the patient with severe hypokalaemia: the potassium quiz. *QJM* 2005; 98:305–316.
10. **Galla JH.** Metabolic alkalosis. *J Am Soc Nephrol* 2000; 11:369–375.
11. **Asmar A, Mohandas R, Wingo CS.** A physiologic-based approach to the treatment of a patient with hypokalemia. *Am J Kidney Dis* 2012; 60:492–497.
12. **Cohn JN, Kowey PR, Whelton PK, Prisant LM.** New guidelines for potassium replacement in clinical practice: a contemporary review by the National Council on Potassium in Clinical Practice. *Arch Intern Med* 2000; 160:2429–2436.
13. **Luke RG, Galla JH.** It is chloride depletion alkalosis, not contraction alkalosis. *J Am Soc Nephrol* 2012; 23:204–207.
14. **Kruse JA, Carlson RW.** Rapid correction of hypokalemia using concentrated intravenous potassium chloride infusions. *Arch Intern Med* 1990; 150:613–617.
15. **Weiner ID, Wingo CS.** Hypokalemia—consequences, causes, and correction. *J Am Soc Nephrol* 1997; 8:1179–1188.
16. **AED Medical Care Standards Task Force.** Eating disorders: Critical Points for Early Recognition and Medical Risk Management in the Care of Individuals with Eating Disorders. AED Report 2012. [www.aedweb.org/web/downloads/Guide-English.pdf](http://www.aedweb.org/web/downloads/Guide-English.pdf). Accessed April 4, 2014.

---

**ADDRESS:** Cynthia H. Ho, MD, Los Angeles County and University of Southern California Medical Center, 2020 Zonal Avenue, IRD Room 109, Los Angeles, CA 90033; e-mail: [cynho@usc.edu](mailto:cynho@usc.edu)