

# TABLE OF CONTENTS

## FROM THE EDITOR

### Trust the thyroid thermostat 552

Why do some physicians persist in regularly following the T3 and T4 levels in addition to the TSH?

B.F. MANDELL

## THE CLINICAL PICTURE

### Advanced-stage calciphylaxis: Think before you punch 562

Biopsy can cause or worsen ulceration at the incision site, increasing the risk of infection and sepsis.

A. SREEDHAR, H.A. SHEIKH, C.J. SCAGLIOTTI, AND R. NAIR

## THE CLINICAL PICTURE

### Geographic tongue 565

Although striking, the lesion is benign and self-limiting and rarely warrants further investigation.

C.N. JACOB, T.M. JOHN, AND J.R.

## 1-MINUTE CONSULT

### Should patients with stable ischemic heart disease undergo revascularization? 567

The benefit is much less clear for stable disease than for acute coronary syndromes.

M. CHENIER AND A.M. LINCOFF

## SMART TESTING

### Is a serum TSH measurement sufficient to monitor the treatment of primary hypothyroidism? 571

Yes, the TSH level provides the information you need to manage primary hypothyroidism.

C. NASR



## MEDICAL GRAND ROUNDS

### Your patient has chronic leukemia: Now what? 575

New therapies for chronic myelogenous leukemia and chronic lymphocytic leukemia are increasing the number of survivors.

M. KALAYCIO

CONTINUED ON PAGE 696



## Online Features

### Access

*Cleveland Clinic Journal of Medicine* content is readily available to all and is free of charge at [www.ccjm.org](http://www.ccjm.org). On your first visit, we will ask you to take a few minutes to register, but subsequent visits will be unencumbered except for an occasional request for your e-mail address when you visit using another device (eg, mobile phone, tablet).

### Services

- Navigate quickly to articles in current and past issues via links on the home page and pull-down menus at the top of the page. Use the search function to find a specific article, or browse by topic or article type.
- Continuing medical education activities are accessible from article links and from a CME pull-down menu on the home page. Participation is free.
- Follow links on the home page to news, summaries of recent scientific meetings, and interactive quizzes.
- Click on the PDF symbol at the top of any online article to read, download, or print the article in PDF format.

### Social Networking

To post a CCJM article to Facebook or Twitter, just click on the icon at the top of any online article.

[www.ccjm.org](http://www.ccjm.org)

# Upcoming Features

- Dual antiplatelet therapy: How long to continue?
- The low-FODMAP diet for irritable bowel syndrome
- Dermatologic signs of nutritional deficiencies
- Thrombotic microangiopathies and the kidney
- Serotonin syndrome: Not just from SSRIs
- Gout in African Americans: Reducing the disparity
- The ABCs of heart failure
- Give thrombolysis for submassive pulmonary embolism?



**AUGUST 2016**

CONTINUED FROM PAGE 550

## IM BOARD REVIEW.....

### Renal failure in HCV cirrhosis 583

The patient was diagnosed with hepatitis C 15 years ago; now, his kidneys are failing.

C.D. PUNJABI, Y.K. LAI, M. BALASUBRAMANIAN, AND I. DISSANAYAKE

## REVIEW.....

### Information management for clinicians 589

How to create a personalized stream of relevant information that can be saved so that it is readily accessible.

N.B. MEHTA, S.A. MARTIN, J. MAYPOLE, AND R. ANDREWS

## REVIEW.....

### Thrombotic thrombocytopenic purpura: The role of ADAMTS13 597

ADAMTS13 testing is useful in diagnosing this disease, guiding therapy, and predicting relapse.

H.J. ROGERS, C. ALLEN, AND A.E. LICHTIN

## REVIEW.....

### Is there a time limit for systemic menopausal hormone therapy? 605

The duration needs to be an individualized, shared decision that is reassessed annually.

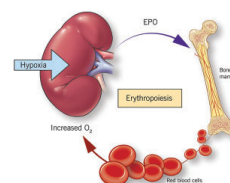
L.D. LIPOLD, P. BATUR, AND R. KAGAN

## REVIEW.....

### Anemia of chronic kidney disease: Treat it, but not too aggressively 613

Renal anemia is associated with bad outcomes, but attempting to normalize hemoglobin levels can be harmful.

G. NAKHOUL AND J.F. SIMON



## DEPARTMENTS.....

### CME Calendar 574

### Letters to the Editor 554

Readers comment on prescribing opioids (March 2016), recognizing the signs of measles (May 2016), and managing acute liver failure (June 2016)

### CME Test Directions Inside back cover