

## Online Features

### Access

*Cleveland Clinic Journal of Medicine* content is readily available to all and is free of charge at [www.ccjm.org](http://www.ccjm.org). On your first visit, we will ask you to take a few minutes to register, but subsequent visits will be unencumbered except for an occasional request for your e-mail address when you visit using another device (eg, mobile phone, tablet).

### Services

- Navigate quickly to articles in current and past issues via links on the home page and pull-down menus at the top of the page. Use the search function to find a specific article, or browse by topic or article type.
- Continuing medical education activities are accessible from article links and from a CME pull-down menu on the home page. Participation is free.
- Follow links on the home page to news, summaries of recent scientific meetings, and interactive quizzes.
- Click on the PDF symbol at the top of any online article to read, download, or print the article in PDF format.

### Social Networking

To post a *CCJM* article to Facebook or Twitter, just click on the icon at the top of any online article.

[www.ccjm.org](http://www.ccjm.org)

OCTOBER 2017

## TABLE OF CONTENTS

### FROM THE EDITOR

#### **When cold-induced vasospasm is the tip of the iceberg** 739

For a minority of patients, Raynaud phenomenon may be the presenting sign of a systemic disorder.

B.F. MANDELL

### THE CLINICAL PICTURE

#### **Osborn waves of hypothermia** 746

The differential diagnosis includes Brugada syndrome, hypercalcemia, and early repolarization syndrome.

P. AMBESH, G. HOLLANDER, AND J. SHANI

### 1-MINUTE CONSULT

#### **Is pregnancy safe after kidney transplant?** 750

Yes, but successful pregnancy requires a team approach, patient education, and counseling.

S. SHAH

### THE CLINICAL PICTURE

#### **Sarcoidosis mimicking lytic osseous metastases** 753

Sarcoidosis involves the lung in more than 90% of cases; skeletal involvement has been reported in 1% to 14%.

A.M. BRANDY-GARCÍA, I. CABEZAS-RODRIGUEZ, L. CAMINAL-MONTERO, C. SUAREZ-CUERO, AND P. REDONDO-BUIL

### 1-MINUTE CONSULT

#### **Which patients with respiratory disease need long-term azithromycin?** 755

Long-term use should be individualized, with benefits weighed against the risks and monitoring for adverse effects.

A. ALCHAKAKI, C. CRAMER, A. PATTERSON, AND A.O. SOUBANI

### MEDICAL GRAND ROUNDS

#### **Diabetes medications and cardiovascular outcome trials: Lessons learned** 759

Drugs of several classes have demonstrated cardiovascular safety; empagliflozin carries a cardiovascular indication.

K.V. PATEL, N. DE ALBUQUERQUE ROCHA, AND D.K. MCGUIRE

CONTINUED ON PAGE 738



## CARDIOLOGY TALL ROUNDS.....

**Navigating the anticoagulant landscape in 2017** 768

What is the best strategy in acute venous thromboembolism?  
How should anticoagulation be managed before surgery?

J.D. DOUKETIS

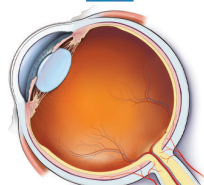


## IM BOARD REVIEW.....

**Acute monocular vision loss: Don't lose sight of the differential** 779

An 83-year-old man woke up one morning unable to see out of his left eye; 6 hours earlier it had been normal.

J.R. ABBATEMARCO, R. PATELL, J. BUCCOLA, AND M.A. WILLIS



## ADDRESSING DISPARITIES IN HEALTHCARE.....

**Disparities in cervical cancer in African American women: What primary care physicians can do** 788

African American women are disproportionately affected, but equal access to care may eliminate most of the disparity.

C. ARVIZO AND H. MAHDI

## EDITORIAL.....

**Cervical cancer in African American women: Optimizing prevention to reduce disparities** 795

Primary care providers play a crucial role in cancer control, including screening and follow-up.

A.D. MISRA-HEBERT



## REVIEW.....

**Treating Raynaud phenomenon: Beyond staying warm** 797

Avoidance of cold and stress are first-line measures, but if these fail, vasodilator agents are used.

S.C. SHAPIRO AND F.M. WIGLEY

## DEPARTMENTS.....

**CME Calendar** 741**CME instructions** 805

# Upcoming Features

- Acute cardiorenal syndrome: A stepwise approach
- Perioperative risk: Which index is best?
- Angioplasty for stable angina: Why do we still do it?
- Chronic kidney disease in African Americans: The puzzle comes together
- Weight-loss drugs: What you need to know
- Idiopathic calciuria, kidney stones, and bone health
- Female athlete triad: Who to screen, what to ask
- High care-utilizers: Time to rethink
- Heart risk in the frail elderly: Individualized shared decisions



DEDICATED TO LIFELONG LEARNING  
CLEVELAND  
CLINIC  
JOURNAL OF  
MEDICINE