

**PREETHI MANI, MD**

Department of Cardiovascular Medicine, Cleveland Clinic; Clinical Instructor, Cleveland Clinic Lerner College of Medicine of Case Western Reserve University, Cleveland, OH

**DANNY GONZALEZ, MD**

Department of Cardiovascular Medicine, Cleveland Clinic

**SOUMYA CHATTERJEE, MD, MS, FRCP**

Department of Rheumatic and Immunologic Diseases, Cleveland Clinic; Associate Professor, Cleveland Clinic Lerner College of Medicine of Case Western Reserve University, Cleveland, OH

**MICHAEL D. FAULX, MD**

Department of Cardiovascular Medicine, Cleveland Clinic; Assistant Professor, Cleveland Clinic Lerner College of Medicine of Case Western Reserve University, Cleveland, OH

# Cardiovascular complications of systemic sclerosis: What to look for

## ABSTRACT

Systemic sclerosis, an autoimmune disease characterized by fibrosis of the skin and various internal organs, is associated with cardiovascular abnormalities including pulmonary hypertension, atherosclerosis, right and left ventricular dysfunction, arrhythmias, conduction defects, pericardial disease, and valvular heart disease. Clinicians caring for patients with this disease should regularly screen for cardiac symptoms, and patients with abnormal findings should be managed in conjunction with a cardiologist to optimally modify cardiovascular risks.

## KEY POINTS

Pulmonary hypertension is common in systemic sclerosis and carries a poor prognosis. Patients with systemic sclerosis should be screened regularly with echocardiography, followed, when necessary, by right heart catheterization to detect it early.

Myocardial infarction and stroke are more common in patients with systemic sclerosis, and preventive measures are the same as for the general population.

Right ventricular dysfunction secondary to pulmonary hypertension is common in systemic sclerosis; left ventricular dysfunction is less so. Routine echocardiography should include assessment of right and left ventricular function.

Electrocardiography should be performed periodically, and urgently when indicated, to look for potentially dangerous arrhythmias.

**A**UTOIMMUNE RHEUMATIC DISEASES increase the risk of cardiovascular disease. In rheumatoid arthritis and systemic lupus erythematosus, the risk is driven primarily by the inflammatory milieu, leading to accelerated coronary and cerebrovascular atherosclerosis independent of traditional atherosclerotic risk factors.<sup>1-3</sup> The extent of cardiovascular involvement in other rheumatologic diseases has been less well characterized but is an area of growing interest.

In this review, we focus on the cardiovascular complications of systemic sclerosis and review recommendations for monitoring these patients in clinical practice.

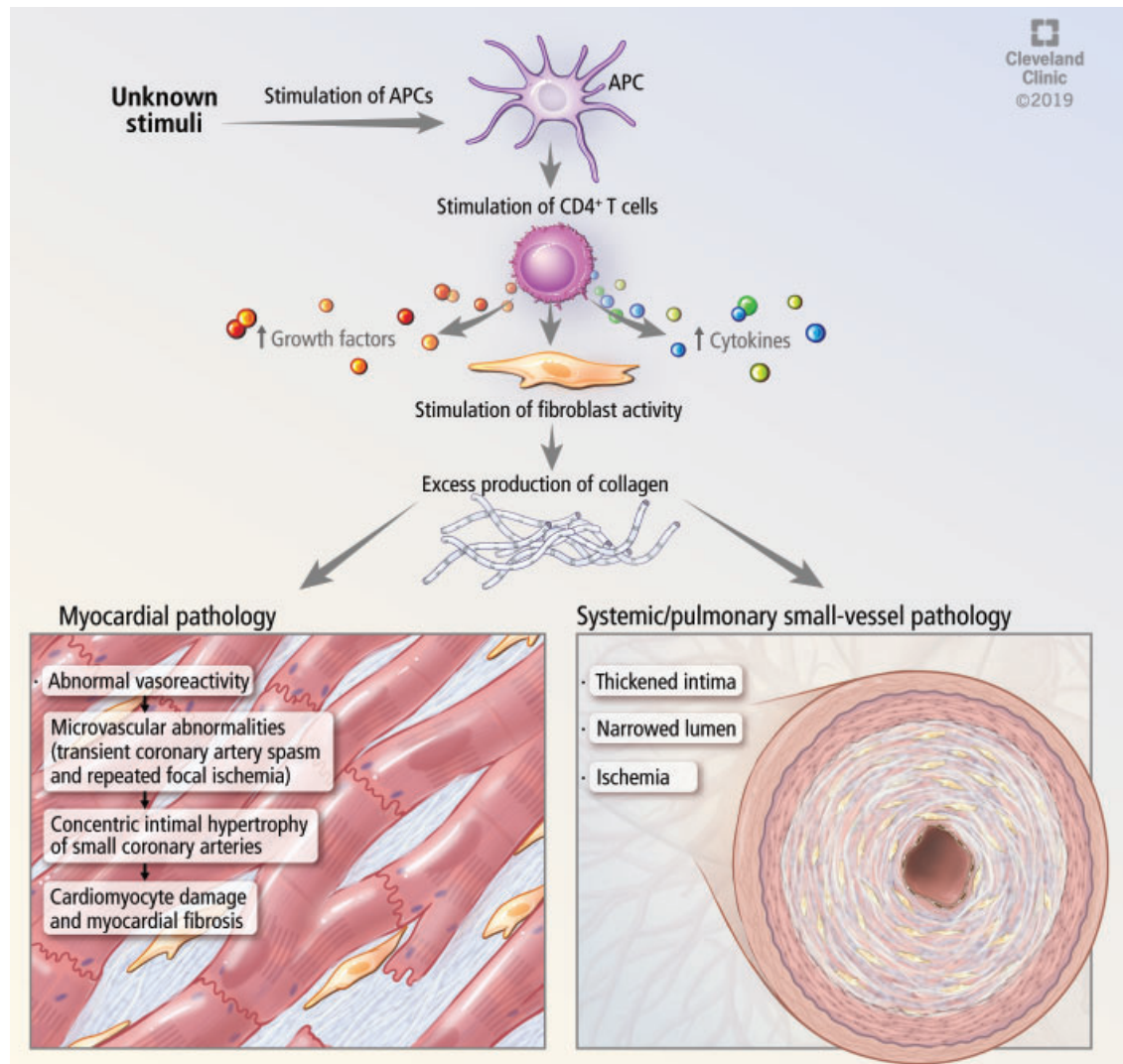
## ■ SYSTEMIC SCLEROSIS, AN AUTOIMMUNE RHEUMATIC DISEASE

Systemic sclerosis is an autoimmune rheumatic disease characterized by excessive extracellular matrix deposition leading to diffuse fibrosis, endothelial dysfunction, and microvascular injury. It is most common in North America, Southern Europe, and Australia,<sup>4,5</sup> and it affects women more than men in ratios ranging from 3:1 to 14:1.<sup>6</sup> The mean age at diagnosis is around 50.

The disease can affect the lungs (interstitial lung disease and pulmonary hypertension), the heart, the kidneys, and the gastrointestinal tract.

Systemic sclerosis has 2 main subtypes: limited cutaneous systemic sclerosis, formerly called CREST syndrome) and diffuse cutaneous systemic sclerosis. The limited cutaneous subtype is characterized by tightening of the skin of the distal extremities (below the elbows and knees) and face, while diffuse cutaneous systemic sclerosis can manifest as more exten-

doi:10.3949/ccjm.86a.18109



**Figure 1.** Mechanisms of cardiac and vascular involvement in systemic sclerosis.

APC = antigen-presenting cell

sive skin tightening also involving proximal extremities and the trunk. Both subtypes can have an effect on the cardiovascular system.

Some cardiovascular risk factors such as dyslipidemia, diabetes mellitus, and high body mass index are less common in patients with systemic sclerosis than in patients with rheumatoid arthritis, while the rates of arterial hypertension, smoking, chronic obstructive pulmonary disease, osteoporosis, and neoplasms are similar between the 2 groups.<sup>7</sup>

**HEART INVOLVEMENT HAS SERIOUS CONSEQUENCES**

Overt cardiac involvement in systemic sclerosis is associated with a mortality rate of up to

70% over 5 years,<sup>8,9</sup> and about one-fourth of deaths in patients with systemic sclerosis are from cardiac causes.<sup>10,11</sup> Studies in Europe<sup>10,12</sup> showed that many patients with systemic sclerosis have cardiac involvement detectable by magnetic resonance imaging even if they do not have clinical disease. Pulmonary arterial hypertension (PAH) is a complication of both subtypes of systemic sclerosis and portends a higher risk of death.<sup>8</sup>

Thus, it is critical for clinicians to understand the potential comorbid conditions associated with systemic sclerosis, particularly the cardiovascular ones, and to work closely with cardiologists to help optimize the evaluation and management.

## MECHANISMS OF CARDIAC DISEASE IN SYSTEMIC SCLEROSIS

Microvascular disease in systemic sclerosis is primarily driven by endothelial cell activation and injury, leading to overexpression of adhesion molecules, recruitment of immune cells, intimal fibrosis, and fibroblast proliferation (Figure 1).<sup>13</sup>

Abnormal vasoreactivity, a consequence of an imbalance between endothelium-derived vasoconstrictors and vasodilators, defective angiogenesis, and endothelial injury, leads to tissue ischemia and vascular endothelial growth factor expression, which initiates injury and fibrosis in the myocardium and in other organs.<sup>14–17</sup> Fibrosis involves the myocardium, pericardium, and conduction system.<sup>13,18</sup>

Myocardial involvement in systemic sclerosis is thought to be due mainly to abnormal vasoreactivity and microvascular abnormalities such as transient coronary artery spasm leading to repeated focal ischemia.<sup>19,20</sup> Abnormal vasoreactivity has been demonstrated during cardiac catheterization<sup>21</sup>: while mean coronary sinus blood flow in systemic sclerosis patients was normal at rest, vasodilator reserve was significantly reduced in patients with diffuse cutaneous systemic sclerosis after maximal vasodilation with dipyridamole. Additionally, endomyocardial biopsy showed fibrosis and concentric intimal hypertrophy with normal epicardial coronary arteries.<sup>21</sup>

More research into other mechanisms of cardiovascular disease in systemic sclerosis is needed to allow for better preventive care for these patients.

## PULMONARY ARTERIAL HYPERTENSION

Systemic sclerosis can be associated with World Health Organization (WHO) groups 1, 2, 3, and 4 pulmonary hypertension. WHO group 1, called pulmonary arterial hypertension or PAH, is one of the most common cardiac complications of systemic sclerosis, with a reported prevalence as high as 12%.<sup>22</sup> Systemic sclerosis-associated PAH carries a high mortality rate, with a mean survival of only 3 years.<sup>23</sup>

With advances in treatments for other complications of systemic sclerosis, the percentage of systemic sclerosis patients who die of PAH has increased from 6% to 33%.<sup>24</sup>

Compared with patients with idiopathic PAH, those with systemic sclerosis get less of a response from therapy and have poorer outcomes despite lower mean pulmonary artery pressures and similar reductions in cardiac index. However, recent studies have suggested that with aggressive treatment, patients with systemic sclerosis-related PAH can achieve outcomes similar to those with idiopathic PAH.<sup>25</sup> Thus, recognizing this condition early is imperative.

### Pulmonary arterial hypertension defined

PAH is defined as the combination of all of the following<sup>26</sup>:

- Mean pulmonary artery pressure > 20 mm Hg at rest
- Normal pulmonary capillary wedge pressure ( $\leq 15$  mm Hg)
- Pulmonary vascular resistance  $\geq 3$  Wood units on right heart catheterization.

Other causes of pulmonary hypertension such as interstitial lung disease, chronic pulmonary thromboembolic disease, and left heart disease must be excluded.<sup>24,27</sup>

### Remodeling in the pulmonary arteries

The events that lead to PAH in systemic sclerosis remain unclear but are believed to involve initial inflammation or endothelial injury that leads to a dysequilibrium between proliferative mediators and antiproliferative vasodilators. This dysequilibrium, along with endothelial dysfunction, causes an obliterative vasculopathy in the pulmonary artery branches and arterioles. Sympathetic overactivity, hypoxemia, and ischemia-reperfusion injury additionally promote vascular proliferation, fibrosis, and remodeling, leading to increased pulmonary vascular resistance, PAH, and increased right ventricular pressures.<sup>23,27</sup>

The subtype of systemic sclerosis is an important factor in the development and progression of PAH. PAH appears to be the major cause of death in limited cutaneous systemic sclerosis, while interstitial lung disease is the major cause of death in diffuse cutaneous systemic sclerosis.<sup>28</sup>

### Pulmonary arterial hypertension is a late complication of systemic sclerosis

Data from the South Australian Scleroderma Registry<sup>29</sup> revealed that PAH tends to be a

**Overt cardiac involvement is associated with a mortality rate of up to 70% over 5 years**

late complication of systemic sclerosis, occurring around 20 years after disease onset. In this study of 608 patients, no patient with diffuse cutaneous systemic sclerosis developed PAH.

Systemic sclerosis-related PAH initially follows an indolent course with few symptoms until right ventricular function deteriorates. Early in the disease, patients may experience nonspecific symptoms of fatigue, lightheadedness, and dyspnea on exertion.<sup>23</sup> As it progresses, they tend to have worsening dyspnea and may experience exertional syncope, palpitations, and chest pain.

Physical findings may suggest elevated right ventricular pressure and right ventricular failure; these include a loud P2, a prominent jugular *a* wave, a tricuspid regurgitant murmur, jugular venous distention, and lower-extremity edema.<sup>27</sup>

**Screening for pulmonary arterial hypertension in systemic sclerosis**

Significant signs and symptoms usually occur late in the disease; thus, it is important to appropriately screen patients who are at risk so that they can begin aggressive treatment.

**Doppler echocardiography** is recommended by European and American guidelines to screen for PAH in patients who have systemic sclerosis, and most agree that screening is appropriate even if the patient has no symptoms.<sup>30</sup> European consensus documents recommend that transthoracic echocardiography be done annually for the first 5 years of disease and be continued every year in patients at high risk, ie, those with anticentromere antibodies, anti-Th/To antibodies, or interstitial lung disease. Patients not at high risk of developing pulmonary hypertension should also have regular transthoracic echocardiography, though the exact timing is not defined.<sup>31</sup> While American societies have not issued corresponding recommendations, many experts follow the European recommendations.

**Worrisome features** on echocardiography in asymptomatic patients should be followed up with right heart catheterization to assess mean right ventricular pressure. These include:

- Estimated right ventricular systolic pressure  $\geq 40$  mm Hg

- Tricuspid regurgitant jet velocity  $> 2.8$  m/s
- Right atrial enlargement  $> 53$  mm
- Right ventricular enlargement (mid-cavity dimension  $> 35$  mm).<sup>32</sup>

Although echocardiography is the most common form of screening, it gives only an estimate of right ventricular systolic pressure, which is imprecise. Other noninvasive markers are helpful and necessary to appropriately screen this population.

**Diffusion capacity.** The Itinerair study<sup>33</sup> found that a diffusing capacity for carbon monoxide (DLCO) of 60% or higher has a high specificity in excluding PAH.

**Uric acid** has been found to be elevated in patients with systemic sclerosis-related PAH, and levels inversely correlate with 6-minute walking distance.<sup>34</sup>

**Other predictors.** N-terminal pro-B-type natriuretic peptide (NT-proBNP), left atrial volume, and the right ventricular myocardial performance index have also been shown to be independent predictors of PAH in patients with systemic sclerosis.<sup>35</sup>

**An algorithm.** The DETECT study<sup>36</sup> enrolled patients at increased risk who had had systemic sclerosis longer than 3 years and a DLCO less than 60%. The investigators developed a 2-step algorithm to determine which patients should be referred for right heart catheterization to try to detect PAH earlier while minimizing the number of missed diagnoses and optimizing the use of invasive diagnostic right heart catheterization.

The first step was to assess serum values of anticentromere antibodies, NT-proBNP, and urate, and clinical features (telangiectasias), forced vital capacity, and electrocardiographic changes of right axis deviation to derive a prediction score. The second step was to assess surface echocardiographic features of the right atrial area and tricuspid regurgitation velocity.

This approach led to right heart catheterization in 62% of patients and was associated with a false-negative rate of 4%. Importantly, of the patients with PAH, 1 in 5 had no symptoms, and 33% had tricuspid regurgitation velocity less than 2.8 m/s. No single measurement performed well in isolation in this study.<sup>37</sup>

Thus, we recommend that, in addition

**We recommend a multimodal approach to screen for pulmonary arterial hypertension**

to routine surface echocardiography, a multimodal approach be used that includes laboratory testing, clinical features, and electrocardiographic findings when screening this high-risk patient population.

## ■ ATHEROSCLEROTIC DISEASES

Although macrovascular disease has not typically been regarded as a significant systemic feature in systemic sclerosis, myocardial infarction and stroke are more common in patients with systemic sclerosis than in controls.<sup>38,39</sup>

### Coronary artery disease in systemic sclerosis

Man et al<sup>38</sup> reported that the incidence of myocardial infarction in patients with systemic sclerosis was 4.4 per 1,000 persons per year, and the incidence of stroke was 4.8 per 1,000 persons per year, compared with 2.5 per 1,000 persons per year for both myocardial infarction and stroke in healthy controls matched for age, sex, and time of entry.

The Australian Scleroderma Cohort Study<sup>39</sup> found a 3-fold higher prevalence of coronary artery disease in systemic sclerosis patients than in controls after factoring in traditional risk factors.

Aviña-Zubieta et al,<sup>40</sup> in a cohort of 1,239 systemic sclerosis patients, estimated a hazard ratio (HR) of 3.49 for myocardial infarction and 2.35 for stroke compared with age- and sex-matched controls. Not all of these events were related to macrovascular atherosclerosis—vasospasm and microvascular ischemia may have played significant roles in the etiology of clinical manifestations.

Studies of coronary atherosclerosis in systemic sclerosis are limited. An autopsy study<sup>41</sup> of 58 patients with systemic sclerosis and 58 controls matched for age, sex, and ethnicity found that the prevalence of atherosclerosis of small coronary arteries and arterioles was significantly higher in systemic sclerosis patients than in controls (17% vs 2%,  $P < .01$ ). However, the prevalence of medium-vessel coronary atherosclerosis was similar (48% vs 43%).

Why patients with systemic sclerosis develop atherosclerosis has not yet been determined. Traditional risk factors such as hypertension, dyslipidemia, diabetes mellitus, and obesity are typically no more prevalent in systemic sclerosis patients than in con-

trols,<sup>38,42</sup> and thus do not explain the increased risk of atherosclerotic cardiovascular disease. There is some evidence that novel markers of atherosclerotic risk such as homocysteine,<sup>43</sup> lipoprotein[a],<sup>44</sup> and oxidized low-density lipoprotein<sup>45</sup> are more prevalent in systemic sclerosis, but these results have not been substantiated in more extensive studies.

### Peripheral artery disease

It remains unclear whether peripheral artery disease is more prevalent in systemic sclerosis patients than in controls.

Individual studies have shown mixed results in comparing carotid artery stenosis between systemic sclerosis patients and controls using carotid duplex ultrasonography,<sup>46</sup> the ankle-brachial index,<sup>46-48</sup> carotid intima-media thickness,<sup>49-54</sup> and brachial flow-mediated dilation.<sup>51,53,55-58</sup> A meta-analysis found that the carotid intima and media are significantly thicker in systemic sclerosis patients than in controls,<sup>59</sup> and the magnitude of difference is similar to that in other groups at increased cardiovascular risk, such as those with rheumatoid arthritis, diabetes, and familial hypercholesterolemia.<sup>60-63</sup>

A meta-analysis of brachial artery findings showed significantly lower flow-mediated dilation in systemic sclerosis patients than in controls.<sup>64</sup>

Overall, given the inconsistency of study results, systemic sclerosis patients should be screened and managed as in other patients with peripheral artery disease, but the clinician should be aware that there may be a higher risk of peripheral artery disease in these patients.

## ■ RIGHT AND LEFT VENTRICULAR DYSFUNCTION

Many patients with systemic sclerosis have right ventricular dysfunction as a consequence of PAH.<sup>65</sup> It is important to detect diastolic dysfunction in this population, as it may be an even stronger predictor of death than pulmonary hypertension on right heart catheterization (HR 3.7 vs 2.0).<sup>66</sup>

Fewer patients have left ventricular dysfunction. In a multicenter study of 570 systemic sclerosis patients, only 1.4% had left ventricular systolic dysfunction on echocar-

**Vasospasm and microvascular ischemia play major roles in stroke and myocardial infarction in systemic sclerosis**

diography, though 22.6% had left ventricular hypertrophy and 17.7% had left ventricular diastolic dysfunction.<sup>67</sup> In the European League Against Rheumatism (EULAR) database, the prevalence of reduced left ventricular ejection fraction was 5.4%.<sup>68</sup>

Though traditional echocardiographic screening suggests the prevalence of left ventricular dysfunction in systemic sclerosis patients is low, cardiac magnetic resonance imaging (MRI) may be more sensitive than echocardiography for detecting subclinical myocardial involvement. Cardiac MRI has been shown to detect evidence of myocardial pathology (increased T2 signal, left ventricular thinning, pericardial effusion, reduced left ventricular and right ventricular ejection fraction, left ventricular diastolic dysfunction, and delayed myocardial contrast enhancement) in up to 75% of systemic sclerosis cases studied.<sup>69</sup>

Patients with systemic sclerosis should already be undergoing echocardiography every year to screen for PAH, and screening should also include tissue Doppler imaging to detect various forms of left and right ventricular systolic and diastolic dysfunction that may not be clinically apparent.

Though cardiac MRI can provide useful additional information, it is not currently recommended for routine screening in patients with systemic sclerosis.

■ **ARRHYTHMIAS AND CONDUCTION DEFECTS**

Patients with systemic sclerosis are prone to arrhythmias due to both conduction system fibrosis and myocardial damage.

Arrhythmias accounted for 6% of the deaths in the EULAR Scleroderma Trials and Research (EUSTAR) database.<sup>11</sup>

In the Genetics Versus Environment in Scleroderma Outcome Study (GENISOS),<sup>70</sup> 250 patients who had had systemic sclerosis for at least 3 years were studied during a period of approximately 6 years, during which there were 52 deaths, 29 of which were directly attributable to systemic sclerosis. Multivariable Cox modeling showed that 7 variables predicted mortality:

- Body mass index < 18.5 kg/m<sup>2</sup>
- Age ≥ 65

- Forced vital capacity < 50% predicted
- Systolic blood pressure ≥ 140 or diastolic blood pressure ≥ 90 mm Hg
- Pulmonary fibrosis
- Positive anticentromere antibodies
- Cardiac arrhythmias.

The hazard ratio for death in patients with arrhythmias in this model was 2.18 (95% CI 1.05–4.50, *P* = .035). Thus, finding arrhythmias in systemic sclerosis patients can provide important prognostic information.

While resting electrocardiography in patients with systemic sclerosis most commonly shows sinus rhythm, 24-hour electrocardiographic monitoring has revealed nonsustained supraventricular and ventricular arrhythmias in a significant percentage.<sup>71,72</sup> Although difficult to quantify in routine practice, parameters controlled by the autonomic nervous system including heart rate variability and heart rate turbulence have been shown to be impaired in systemic sclerosis, and these measures are associated with an increased risk of malignant arrhythmias and sudden cardiac death.<sup>73,74</sup>

**Conduction abnormalities**

Conduction abnormalities occur in one-fifth to one-third of patients with systemic sclerosis.<sup>75,76</sup> The most common abnormal conduction finding is left bundle branch block, followed by first-degree atrioventricular block. High-degree atrioventricular block is uncommon,<sup>76</sup> though a few case reports of complete heart block thought to be related to systemic sclerosis have been published.<sup>77–79</sup> An autopsy study showed that the conduction system is relatively spared from myocardial changes seen in systemic sclerosis patients, and thus it is speculated that the conduction disturbances are a consequence of damaged myocardium rather than damage to conduction tissue.<sup>80</sup>

Given the array of electrophysiologic abnormalities that systemic sclerosis patients can have, it is critical to monitor all patients with routine (annual or biannual) electrocardiography; to take possible arrhythmia-related symptoms seriously; and to evaluate them with further workup such as Holter monitoring for 24 hours or even longer, event monitoring, exercise testing, or tilt-table testing.

**Patients are prone to arrhythmias due to both conduction system fibrosis and myocardial damage**

## ■ PERICARDIAL DISEASE

Pericardial disease is clinically apparent in 5% to 16% of patients with systemic sclerosis<sup>81</sup>; patients with limited cutaneous systemic sclerosis have more pericardial disease than those with diffuse cutaneous systemic sclerosis (30% vs 16%).<sup>82</sup> Forty-one percent of systemic sclerosis patients have been shown to have pericardial effusion by echocardiography,<sup>81</sup> but the effusions are typically small and rarely cause tamponade, though tamponade is associated with a poor prognosis.

Large pericardial effusions can develop before skin thickening and diagnosis of systemic sclerosis.<sup>81,83,84</sup> Thus, systemic sclerosis should be considered in patients with pericardial effusions of unknown etiology.

In a small study,<sup>85</sup> the pericardial fluid in systemic sclerosis was typically exudative, with lactate dehydrogenase greater than 200 U/L, a fluid-serum lactate dehydrogenase ratio greater than 0.6, and a fluid-serum total protein ratio greater than 0.5.

Pericardial effusion can be a sign of impending scleroderma renal crisis,<sup>86</sup> and thus renal function should be carefully monitored in systemic sclerosis patients with pericardial effusion. Constrictive pericarditis and restrictive cardiomyopathy can rarely occur in systemic sclerosis and may more commonly present with symptoms.

Pericardial disease in systemic sclerosis should be treated in a standard fashion with nonsteroidal anti-inflammatory drugs. Corticosteroids are generally of limited benefit and should be avoided, especially in the setting of scleroderma renal crisis.<sup>81</sup>

## ■ VALVULAR HEART DISEASE

Based on limited studies, the prevalence of significant valvular heart disease in systemic sclerosis patients does not seem to be higher than that in the general population. While patients with systemic sclerosis and CREST syndrome (calcinosis, Raynaud phenomenon, esophageal dysmotility, sclerodactyly, and telangiectasia) have been shown to have a higher frequency of mitral valve prolapse and mild mitral regurgitation,<sup>87,88</sup> these abnormalities do not often progress in severity, and thus their clinical significance is limited.

## ■ RECOMMENDATIONS FOR CARE OF SYSTEMIC SCLEROSIS PATIENTS

It is important for physicians caring for patients with systemic sclerosis to be aware of its most common cardiac manifestations, including left and right ventricular systolic and diastolic dysfunction, pulmonary hypertension, conduction abnormalities, arrhythmias, and cardiomyopathy.

### Look for volume overload

On clinical examination, assess for clinical markers of volume overload such as distended neck veins, peripheral edema, or an abnormal blood pressure response to the Valsalva maneuver. These findings should prompt measurement of NT-proBNP,<sup>89</sup> and may warrant prescription of a diuretic.

### Electrocardiography to investigate arrhythmias

Electrocardiography should be done if patients describe symptoms of palpitations, and should also include continuous rhythm monitoring with Holter or event monitoring, depending on the frequency of symptoms. Otherwise, patients should routinely undergo electrocardiography once or twice a year.

Q waves are common in systemic sclerosis patients (especially those with diffuse cutaneous systemic sclerosis), notably in the precordial leads, and can occur without coronary artery disease.<sup>90</sup> Symptoms such as presyncope should be further investigated with Holter monitoring and tilt-table testing.

### Assess, modify traditional risk factors

Subclinical atherosclerosis as detected by carotid intima-media thickness is as common in systemic sclerosis as in rheumatoid arthritis.<sup>61</sup> However, traditional risk indices such as SCORE (Systematic Coronary Risk Evaluation), QRISK2, and the American College of Cardiology/American Heart Association indices may underestimate risk in patients who have systemic sclerosis.

**Strict hypertension control** should be the goal for all systemic sclerosis patients. Though there are no specific guidelines on which antihypertensive medications are preferred, calcium channel blockers or angiotensin II receptor blockers, which are typically used to treat systemic sclerosis-related Raynaud phe-

**Consider systemic sclerosis in patients with pericardial effusions of unknown etiology**

nomenon, may be appropriate.

**Statins** reduce vascular complications and are generally well tolerated in patients with systemic sclerosis.<sup>91,92</sup>

**Aspirin is not recommended for routine primary prevention** in view of data suggesting that its benefits in diabetic patients are counterbalanced by increased bleeding risk.<sup>93</sup>

**Echocardiography to detect pulmonary arterial hypertension**

At this time, guidelines for monitoring for cardiovascular manifestations in systemic sclerosis patients are limited. The only well-defined ones are European consensus guidelines, which suggest annual transthoracic echocardiography for the first 5 years after systemic sclerosis is diagnosed and continued annual screening in patients at risk of developing PAH.<sup>31</sup>

We support this strategy, with annual screening for the first 5 years followed by surveillance echocardiography every 2 to 3 years unless there is a high risk of PAH. Specific attention should be paid to right ventricular diastolic function, right atrial volume, and right ventricular myocardial performance index.

Emerging data suggest that the addition of global longitudinal strain of ventricles to routine echocardiography can help detect subclinical cardiac risk.<sup>94</sup> Although further study is needed into the predictive value of global longitudinal strain, it is a low-cost and noninvasive addition to standard echocardiography that can help guide risk stratification, and thus we recommend that it be part of the echocardiographic examination for all systemic sclerosis patients.

**Pulmonary function testing.** In addition to screening for PAH with echocardiography, we recommend obtaining baseline pulmonary function tests, including DLCO, at the time systemic sclerosis is diagnosed, with repeat testing annually.

**Magnetic resonance imaging**

While echocardiography is the gold standard for monitoring systemic sclerosis patients, car-

diovascular MRI may have a role in identifying those at higher risk of dangerous arrhythmias such as ventricular tachycardia and ventricular fibrillation. In addition to assessing ventricular function, MRI can detect myocardial inflammation, ischemia, and fibrosis that may predispose a patient to develop ventricular tachycardia or fibrillation.<sup>95</sup> Variables such as T1/T2 mapping, extracellular volume fraction, T2 signal ratio, and early vs late gadolinium enhancement can help identify patients who had past ventricular tachycardia or fibrillation.<sup>96</sup>

Finding an increased risk of arrhythmias may prompt a conversation between the patient and the physician about the need for an implantable cardiac defibrillator.

If cardiac MRI is available and is reimbursed by the patient's insurance carrier, physicians should strongly consider obtaining at least one baseline scan in systemic sclerosis patients to identify those at risk of highly fatal arrhythmias.

**Teamwork is needed**

Systemic sclerosis has not traditionally been associated with cardiovascular disease to the extent of other rheumatic conditions, but the cardiovascular system can be affected in various ways that can ultimately lead to an early death. These manifestations may be asymptomatic for long periods, and overt clinical disease portends a poorer prognosis.

Primary care physicians managing these patients should be aware of the cardiovascular complications of systemic sclerosis and should implement appropriate screening tests in conjunction with rheumatologists and cardiologists. It is also essential for general and subspecialty cardiologists to understand the broad spectrum of organ system involvement that can affect systemic sclerosis patients and to tailor their investigation and management recommendations accordingly. By designing a multidisciplinary approach to the treatment of systemic sclerosis patients, physicians can help to optimize cardiovascular risk modification in this vulnerable population. ■

**A risk of arrhythmias may prompt a conversation about an implantable cardiac defibrillator**

■ **REFERENCES**

1. Maradit-Kremers H, Crowson CS, Nicola PJ, et al. Increased unrecognized coronary heart disease and sudden deaths in rheumatoid arthritis: a population-based cohort study. *Arthritis Rheum* 2005; 52(2):402-411. doi:10.1002/art.20853
2. Naranjo A, Sokka T, Descalzo MA, et al; QUEST-RA Group. Cardiovascular disease in patients with rheumatoid arthritis: results from the QUEST-RA study. *Arthritis Res Ther* 2008; 10(2):R30. doi:10.1186/ar2383
3. Innala L, Möller B, Ljung L, et al. Cardiovascular events in early RA are a result of inflammatory burden and traditional risk factors: a five year prospective study. *Arthritis Res Ther* 2011; 13(4):R131. doi:10.1186/ar3442
4. Barnes J, Mayes MD. Epidemiology of systemic sclerosis: incidence,



- prevalence, survival, risk factors, malignancy, and environmental triggers. *Curr Opin Rheumatol* 2012; 24(2):165–170. doi:10.1097/BOR.0b013e32834ff2e8
5. Chiffot H, Fautrel B, Sordet C, Chatelus E, Sibilia J. Incidence and prevalence of systemic sclerosis: a systematic literature review. *Semin Arthritis Rheum* 2008; 37(4):223–235. doi:10.1016/j.semarthrit.2007.05.003
  6. Gabrielli A, Avvedimento EV, Krieg T. Scleroderma. *N Engl J Med* 2009; 360(19):1989–2003. doi:10.1056/NEJMra0806188
  7. Panopoulos S, Tektonidou M, Drosos AA, et al. Prevalence of comorbidities in systemic sclerosis versus rheumatoid arthritis: a comparative, multicenter, matched-cohort study. *Arthritis Res Ther* 2018; 20(1):267. doi:10.1186/s13075-018-1771-0
  8. Ferri C, Valentini G, Cozzi F, et al. Systemic sclerosis: demographic, clinical, and serologic features and survival in 1,012 Italian patients. *Medicine (Baltimore)* 2002; 81(8):139–153. doi:10.1097/00005792-200203000-00004
  9. Steen VD, Medsger TA Jr. Severe organ involvement in systemic sclerosis with diffuse scleroderma. *Arthritis Rheum* 2000; 43(11):2437–2444. doi:10.1002/1529-0131(200011)43:11<2437::AID-ANR10>3.0.CO;2-U
  10. Hachulla AL, Launay D, Gaxotte V, et al. Cardiac magnetic resonance imaging in systemic sclerosis: a cross-sectional observational study of 52 patients. *Ann Rheum Dis* 2009; 68(12):1878–1884. doi:10.1136/ard.2008.095836
  11. Tyndall AJ, Bannert B, Vonk M, et al. Causes and risk factors for death in systemic sclerosis: a study from the EULAR Scleroderma Trials and Research (EUSTAR) database. *Ann Rheum Dis* 2010; 69(10):1809–1815. doi:10.1136/ard.2009.114264
  12. Nassenstein K, Breuckmann F, Huger M, et al. Detection of myocardial fibrosis in systemic sclerosis by contrast-enhanced magnetic resonance imaging. *Rofo* 2008; 180(12):1054–1060. doi:10.1055/s-2008-1027864
  13. Psarras A, Soulaïdopoulos S, Garyfallos A, Kitas G, Dimitroulas T. A critical view on cardiovascular risk in systemic sclerosis. *Rheumatol Int* 2017; 37(1):85–95. doi:10.1007/s00296-016-3530-3
  14. Lekakis J, Mavrikakis M, Emmanuel M, et al. Cold-induced coronary Raynaud's phenomenon in patients with systemic sclerosis. *Clin Exp Rheumatol* 1998; 16(2):135–140. pmid:9536388
  15. Altork N, Wang Y, Kahaleh B. Endothelial dysfunction in systemic sclerosis. *Curr Opin Rheumatol* 2014; 26(6):615–620. doi:10.1097/BOR.0000000000000112
  16. Fleming JN, Nash RA, Mahoney WM Jr, Schwartz SM. Is scleroderma a vasculopathy? *Curr Rheumatol Rep* 2009; 11(2):103–110. pmid:19296882
  17. Maurer B, Distler A, Suliman YA, et al. Vascular endothelial growth factor aggravates fibrosis and vasculopathy in experimental models of systemic sclerosis. *Ann Rheum Dis* 2014; 73(10):1880–1887. doi:10.1136/annrheumdis-2013-203535
  18. Meune C, Vignaux O, Kahan A, Allanore Y. Heart involvement in systemic sclerosis: evolving concept and diagnostic methodologies. *Arch Cardiovasc Dis* 2010; 103(1):46–52. doi:10.1016/j.acvd.2009.06.009
  19. Dimitroulas T, Giannakoulas G, Karvounis H, Garyfallos A, Settas L, Kitas GD. Micro- and macrovascular treatment targets in scleroderma heart disease. *Curr Pharm Des* 2014; 20(4):536–544. pmid:23565639
  20. Allanore Y, Meune C. Primary myocardial involvement in systemic sclerosis: evidence for a microvascular origin. *Clin Exp Rheumatol* 2010; 28(5 suppl 62):S48–S53. pmid:21050545
  21. Kahan A, Nitenberg A, Foulst JM, et al. Decreased coronary reserve in primary scleroderma myocardial disease. *Arthritis Rheum* 1985; 28(6):637–646. pmid:4004974
  22. Morrisroe K, Stevens W, Sahhar J, et al. Epidemiology and disease characteristics of systemic sclerosis-related pulmonary arterial hypertension: results from a real-life screening program. *Arthritis Res Ther* 2017; 19(1):42. doi:10.1186/s13075-017-1250-z
  23. Chaisson NF, Hassoun PM. Systemic sclerosis-associated pulmonary arterial hypertension. *Chest* 2013; 144(4):1346–1356. doi:10.1378/chest.12-2396
  24. Steen VD, Medsger TA. Changes in causes of death in systemic sclerosis, 1972–2002. *Ann Rheum Dis* 2007; 66(7):940–944. doi:10.1136/ard.2006.066068
  25. Coghlan JG, Galiè N, Barberà JA, et al; AMBITION investigators. Initial combination therapy with ambrisentan and tadalafil in connective tissue disease-associated pulmonary arterial hypertension (CTD-PAH): subgroup analysis from the AMBITION trial. *Ann Rheum Dis* 2017; 76(7):1219–1227. doi:10.1136/annrheumdis-2016-210236
  26. Simonneau G, Montani D, Celermajer DS, et al. Haemodynamic definitions and updated clinical classification of pulmonary hypertension. *Eur Respir J* 2019; 53(1):1801913. doi:10.1183/13993003.01913-2018
  27. Chatterjee S. Pulmonary hypertension in systemic sclerosis. *Semin Arthritis Rheum* 2011; 41(1):19–37. doi:10.1016/j.semarthrit.2010.08.004
  28. Sweiss NJ, Hushaw L, Thenappan T, et al. Diagnosis and management of pulmonary hypertension in systemic sclerosis. *Curr Rheumatol Rep* 2010; 12(1):8–18. doi:10.1007/s11926-009-0078-1
  29. Cox SR, Walker JG, Coleman M, et al. Isolated pulmonary hypertension in scleroderma. *Intern Med J* 2005; 35(1):28–33. doi:10.1111/j.1445-5994.2004.00646.x
  30. Sánchez-Román J, Opitz CF, Kowal-Bielecka O, García-Hernández FJ, Castillo-Palma MJ, Pittrow D; EPOSS-OMERACT Group. Screening for PAH in patients with systemic sclerosis: focus on Doppler echocardiography. *Rheumatology (Oxford)* 2008; 47(suppl 5):v33–v35. doi:10.1093/rheumatology/ken306
  31. Walker KM, Pope J; Scleroderma Clinical Trials Consortium; Canadian Scleroderma Research Group. Expert agreement on EULAR/EUSTAR recommendations for the management of systemic sclerosis. *J Rheumatol* 2011; 38(7):1326–1328. doi:10.3899/jrheum.101262
  32. Khanna D, Gladue H, Channick R, et al; Scleroderma Foundation and Pulmonary Hypertension Association. Recommendations for screening and detection of connective tissue disease-associated pulmonary arterial hypertension. *Arthritis Rheum* 2013; 65(12):3194–3201. doi:10.1002/art.38172
  33. Hachulla E, Gressin V, Guillevin L, et al. Early detection of pulmonary arterial hypertension in systemic sclerosis: a French nationwide prospective multicenter study. *Arthritis Rheum* 2005; 52(12):3792–3800. doi:10.1002/art.21433
  34. Dimitroulas T, Giannakoulas G, Dimitroula H, et al. Significance of serum uric acid in pulmonary hypertension due to systemic sclerosis: a pilot study. *Rheumatol Int* 2011; 31(2):263–267. doi:10.1007/s00296-010-1557-4
  35. Dimitroulas T, Giannakoulas G, Papadopoulou K, et al. Left atrial volume and N-terminal pro-B type natriuretic peptide are associated with elevated pulmonary artery pressure in patients with systemic sclerosis. *Clin Rheumatol* 2010; 29(9):957–964. doi:10.1007/s10067-010-1494-3
  36. Coghlan JG, Denton CP, Grünig E, et al; DETECT study group. Evidence-based detection of pulmonary arterial hypertension in systemic sclerosis: the DETECT study. *Ann Rheum Dis* 2014; 73(7):1340–1349. doi:10.1136/annrheumdis-2013-203301
  37. Schwaiger JP, Khanna D, Gerry Coghlan J. Screening patients with scleroderma for pulmonary arterial hypertension and implications for other at-risk populations. *Eur Respir Rev* 2013; 22(130):515–525. doi:10.1183/09059180.00006013
  38. Man A, Zhu Y, Zhang Y, et al. The risk of cardiovascular disease in systemic sclerosis: a population-based cohort study. *Ann Rheum Dis* 2013; 72(7):1188–1193. doi:10.1136/annrheumdis-2012-202007
  39. Ngian G-S, Sahhar J, Proudman SM, Stevens W, Wicks IP, Van Door-num S. Prevalence of coronary heart disease and cardiovascular risk factors in a national cross-sectional cohort study of systemic sclerosis. *Ann Rheum Dis* 2012; 71(12):1980–1983. doi:10.1136/annrheumdis-2011-20117
  40. Aviña-Zubieta JA, Man A, Yurkovich M, Huang K, Sayre EC, Choi HK. Early cardiovascular disease after the diagnosis of systemic sclerosis. *Am J Med* 2016; 29(3):324–331. doi:10.1016/j.amjmed.2015.10.037
  41. D'Angelo WA, Fries JF, Masi AT, Shulman LE. Pathologic observations in systemic sclerosis (scleroderma). A study of fifty-eight autopsy cases

- and fifty-eight matched controls. *Am J Med* 1969; 46(3):428–440. doi:10.1016/0002-9343(69)90044-8
42. **Ngian GS, Sahhar J, Proudman SM, Stevens W, Wicks IP, Van Doornum S.** Prevalence of coronary heart disease and cardiovascular risk factors in a national cross-sectional cohort study of systemic sclerosis. *Ann Rheum Dis* 2012; 71(12):1980–1983. doi:10.1136/annrheumdis-2011-201176
  43. **Khurma V, Meyer C, Park GS, et al.** A pilot study of subclinical coronary atherosclerosis in systemic sclerosis: coronary artery calcification in cases and controls. *Arthritis Rheum* 2008; 59(4):591–597. doi:10.1002/art.23540
  44. **Lippi G, Caramaschi P, Montagnana M, Salvagno GL, Volpe A, Guidi G.** Lipoprotein[a] and the lipid profile in patients with systemic sclerosis. *Clin Chim Acta* 2006; 364(1–2):345–348. doi:10.1016/j.cca.2005.07.015
  45. **Palinski W, Hörkö S, Miller E, et al.** Cloning of monoclonal autoantibodies to epitopes of oxidized lipoproteins from apolipoprotein E-deficient mice. Demonstration of epitopes of oxidized low density lipoprotein in human plasma. *J Clin Invest* 1996; 98(3):800–814. doi:10.1172/JCI118853
  46. **Ho M, Veale D, Eastmond C, Nuki G, Belch J.** Macrovascular disease and systemic sclerosis. *Ann Rheum Dis* 2000; 59(1):39–43. doi:10.1136/ard.59.1.39
  47. **Kaloudi O, Basta G, Perfetto F, et al.** Circulating levels of Nε-(carboxymethyl)lysine are increased in systemic sclerosis. *Rheumatology (Oxford)* 2007; 46(3):412–416. doi:10.1093/rheumatology/ke076
  48. **Muro Y, Sugiura K, Morita Y, Tomita Y.** An evaluation of the efficacy of the toe brachial index measuring vascular involvement in systemic sclerosis and other connective tissue diseases. *Clin Exp Rheumatol* 2009; 27(3 suppl 54):26–31. pmid:19796558
  49. **Cheng K-S, Tiwari A, Boutin A, et al.** Differentiation of primary and secondary Raynaud's disease by carotid arterial stiffness. *Eur J Vasc Endovasc Surg* 2003; 25(4):336–341. doi:10.1053/ejvs.2002.1845
  50. **Kawasaki M, Ito Y, Yokoyama H, et al.** Assessment of arterial medial characteristics in human carotid arteries using integrated backscatter ultrasound and its histological implications. *Atherosclerosis* 2005; 180(1):145–154. doi:10.1016/j.atherosclerosis.2004.11.018
  51. **Szucs G, Timár O, Szekanez Z, et al.** Endothelial dysfunction precedes atherosclerosis in systemic sclerosis—relevance for prevention of vascular complications. *Rheumatology (Oxford)* 2007; 46(5):759–762. doi:10.1093/rheumatology/ke426
  52. **Hettema ME, Zhang D, de Leeuw K, et al.** Early atherosclerosis in systemic sclerosis and its relation to disease or traditional risk factors. *Arthritis Res Ther* 2008; 10(2):R49. doi:10.1186/ar2408
  53. **Roustit M, Simmons GH, Baguet JP, Carpentier P, Cracowski JL.** Discrepancy between simultaneous digital skin microvascular and brachial artery macrovascular post-occlusive hyperemia in systemic sclerosis. *J Rheumatol* 2008; 35(8):1576–1583. pmid:18597404
  54. **Vettori S, Maresca L, Cuomo G, Abbadesse S, Leonardo G, Valentini G.** Clinical and subclinical atherosclerosis in systemic sclerosis: consequences of previous corticosteroid treatment. *Scand J Rheumatol* 2010; 39(6):485–489. doi:10.3109/03009741003781985
  55. **Lekakis J, Mavrikakis M, Papatheofis C, et al.** Short-term estrogen administration improves abnormal endothelial function in women with systemic sclerosis and Raynaud's phenomenon. *Am Heart J* 1998; 136(5):905–912. doi:10.1016/S0002-8703(98)70137-1
  56. **Bartoli F, Blagojevic J, Bacci M, et al.** Flow-mediated vasodilation and carotid intima-media thickness in systemic sclerosis. *Ann N Y Acad Sci* 2007; 1108:283–290. doi:10.1196/annals.1422.030
  57. **Rollando D, Bezante GP, Sulli A, et al.** Brachial artery endothelial-dependent flow-mediated dilation identifies early-stage endothelial dysfunction in systemic sclerosis and correlates with nailfold microvascular impairment. *J Rheumatol* 2010; 37(6):1168–1173. doi:10.3899/jrheum.091116
  58. **Andersen GN, Mincheva-Nilsson L, Kazzam E, et al.** Assessment of vascular function in systemic sclerosis: indications of the development of nitrate tolerance as a result of enhanced endothelial nitric oxide production. *Arthritis Rheum* 2002; 46(5):1324–1332. doi:10.1002/art.10191
  59. **Au K, Singh MK, Bodukam V, et al.** Atherosclerosis in systemic sclerosis: a systematic review and meta-analysis. *Arthritis Rheum* 2011; 63(7):2078–2090. doi:10.1002/art.30380
  60. **van Sijl AM, Peters MJ, Knol DK, et al.** Carotid intima media thickness in rheumatoid arthritis as compared to control subjects: a meta-analysis. *Semin Arthritis Rheum* 2011; 40(5):389–397. doi:10.1016/j.semarthrit.2010.06.006
  61. **Brohäll G, Odén A, Fagerberg B.** Carotid artery intima-media thickness in patients with type 2 diabetes mellitus and impaired glucose tolerance: a systematic review. *Diabet Med* 2006; 23(6):609–616. doi:10.1111/j.1464-5491.2005.01725.x
  62. **Masoura C, Pitsavos C, Aznaouridis K, Skoumas I, Vlachopoulos C, Stefanadis C.** Arterial endothelial function and wall thickness in familial hypercholesterolemia and familial combined hyperlipidemia and the effect of statins. A systematic review and meta-analysis. *Atherosclerosis* 2011; 214(1):129–138. doi:10.1016/j.atherosclerosis.2010.10.008
  63. **Ozen G, Inanc N, Unal AU, et al.** Subclinical atherosclerosis in systemic sclerosis: not less frequent than rheumatoid arthritis and not detected with cardiovascular risk indices. *Arthritis Care Res (Hoboken)* 2016; 68(10):1538–1546. doi:10.1002/acr.22852
  64. **Inaba Y, Chen JA, Bergmann SR.** Prediction of future cardiovascular outcomes by flow-mediated vasodilatation of brachial artery: a meta-analysis. *Int J Cardiovasc Imaging* 2010; 26(6):631–640. doi:10.1007/s10554-010-9616-1
  65. **Meune C, Avouac J, Wahbi K, et al.** Cardiac involvement in systemic sclerosis assessed by tissue-doppler echocardiography during routine care: a controlled study of 100 consecutive patients. *Arthritis Rheum* 2008; 58(6):1803–1809. doi:10.1002/art.23463
  66. **Tenne AH, Murbräach K, Andreassen JC, et al.** Left ventricular diastolic dysfunction predicts mortality in patients with systemic sclerosis. *J Am Coll Cardiol* 2018; 72(15):1804–1813. doi:10.1016/j.jacc.2018.07.068
  67. **de Groote P, Gressin V, Hachulla E, et al; ItinerAIR-Scleroderma Investigators.** Evaluation of cardiac abnormalities by Doppler echocardiography in a large nationwide multicentric cohort of patients with systemic sclerosis. *Ann Rheum Dis* 2008; 67(1):31–36. doi:10.1136/ard.2006.057760
  68. **Allanore Y, Meune C, Vonk MC, et al; EUSTAR co-authors.** Prevalence and factors associated with left ventricular dysfunction in the EULAR Scleroderma Trial and Research group (EUSTAR) database of patients with systemic sclerosis. *Ann Rheum Dis* 2010; 69(1):218–221. doi:10.1136/ard.2008.103382
  69. **Hachulla AL, Launay D, Gaxotte V, et al.** Cardiac magnetic resonance imaging in systemic sclerosis: a cross-sectional observational study of 52 patients. *Ann Rheum Dis* 2009; 68(12):1878–1884. doi:10.1136/ard.2008.095836
  70. **Assasi S, Del Junco D, Sutter K, et al.** Clinical and genetic factors predictive of mortality in early systemic sclerosis. *Arthritis Rheum* 2009; 61(10):1403–1411. doi:10.1002/art.24734
  71. **Rokas S, Mavrikakis M, Agrios N, Mylonas D, Antoniadou L, Mouloupoulos S.** Electrophysiologic abnormalities of cardiac function in progressive systemic sclerosis. *J Electrocardiol* 1996; 29(1):17–25. pmid:8808521
  72. **Kostis JB, Seibold JR, Turkevich D, et al.** Prognostic importance of cardiac arrhythmias in systemic sclerosis. *Am J Med* 1988; 84(6):1007–1015. doi:10.1016/0002-9343(88)90305-1
  73. **Bielous-Wilk A, Poreba M, Staniszewska-Marszałek E, et al.** Electrocardiographic evaluation in patients with systemic sclerosis and without clinically evident heart disease. *Ann Noninvasive Electrocardiol* 2009; 14(3):251–257. doi:10.1111/j.1542-474X.2009.00306.x
  74. **Bienias P, Ciurzynski M, Glińska-Wielochowska M, et al.** Heart rate turbulence assessment in systemic sclerosis: the role for the detection of cardiac autonomic nervous system dysfunction. *Rheumatology (Oxford)* 2010; 49(2):355–360. doi:10.1093/rheumatology/kep394
  75. **Ferri C, Bernini L, Bongiorno MG, et al.** Noninvasive evaluation of cardiac dysrhythmias, and their relationship with multisystemic symptoms, in progressive systemic sclerosis patients. *Arthritis Rheum* 1985; 28(11):1259–1266. pmid:4063000

76. Roberts NK, Cabeen WR, Moss J, Clements PJ, Furst DE. The prevalence of conduction defects and cardiac arrhythmias in progressive systemic sclerosis. *Ann Intern Med* 1981; 94(1):38–40. doi:10.7326/0003-4819-94-1-38
77. Wang Q, Shang Y, Li S, Wu Y, Wang C, Yan X. Complete heart block in systemic sclerosis: a case report and literature review. *Medicine (Baltimore)* 2018; 97(46):e13226. doi:10.1097/MD.00000000000013226
78. Summerfield BJ. Progressive systemic sclerosis with complete heart block. *Br Heart J* 1975; 37(12):1308–1310. doi:10.1136/hrt.37.12.1308
79. Moyssakis I, Papadopoulos DP, Tzioufas AG, Votteas V. Complete heart block in a patient with systemic sclerosis. *Clin Rheumatol* 2006; 25(4):551–552. doi:10.1007/s10067-005-0068-2
80. Ridolfi RL, Bulkley BH, Hutchins GM. The cardiac conduction system in progressive systemic sclerosis. Clinical and pathologic features of 35 patients. *Am J Med* 1976; 61(3):361–366. doi:10.1016/0002-9343(76)90373-9
81. Champion HC. The heart in scleroderma. *Rheum Dis Clin North Am* 2008; 34(1):181–190. doi:10.1016/j.rdc.2007.12.002
82. Gowda RM, Khan IA, Sacchi TJ, Vasavada BC. Scleroderma pericardial disease presented with a large pericardial effusion—a case report. *Angiology* 2001; 52(1):59–62. doi:10.1177/000331970105200108
83. Meier FMP, Frommer KW, Dinser R, et al; EUSTAR Co-authors. Update on the profile of the EUSTAR cohort: an analysis of the EULAR scleroderma trials and research group database. *Ann Rheum Dis* 2012; 71(8):1355–1360. doi:10.1136/annrheumdis-2011-200742
84. Subramanian SR, Akram R, Velayati A, Chadow H. New development of cardiac tamponade on underlying effusive-constrictive pericarditis: an uncommon initial presentation of scleroderma. *BMJ Case Rep* 2013; 2013. doi:10.1136/bcr-2013-010254
85. Kitchongcharoenying P, Foocharoen C, Mahakkanukrauh A, Suwannaroj S, Nanagara R. Pericardial fluid profiles of pericardial effusion in systemic sclerosis patients. *Asian Pac J Allergy Immunol* 2013; 31(4):314–319. doi:10.12932/AP0305.31.4.2013
86. McWhorter JE, LeRoy EC. Pericardial disease in scleroderma (systemic sclerosis). *Am J Med* 1974; 57(4):566–575. doi:10.1016/0002-9343(74)90008-4
87. Comens SM, Alpert MA, Sharp GC, et al. Frequency of mitral valve prolapse in systemic lupus erythematosus, progressive systemic sclerosis and mixed connective tissue disease. *Am J Cardiol* 1989; 63(5):369–370. doi:10.1016/0002-9149(89)90351-2
88. Candell-Riera J, Armadans-Gil L, Simeón CP, et al. Comprehensive noninvasive assessment of cardiac involvement in limited systemic sclerosis. *Arthritis Rheum* 1996; 39(7):1138–1145. pmid:8670322
89. Caforio ALP, Adler Y, Agostini C, et al. Diagnosis and management of myocardial involvement in systemic immune-mediated diseases: a position statement of the European Society of Cardiology Working Group on Myocardial and Pericardial Disease. *Eur Heart J* 2017; 38(35):2649–2662. doi:10.1093/eurheartj/ehx321
90. Mavrogeni S, Karabela G, Koutsogeorgopoulou L, et al. Pseudo-infarction pattern in diffuse systemic sclerosis. Evaluation using cardiovascular magnetic resonance. *Int J Cardiol* 2016; 214:465–468. doi:10.1016/j.ijcard.2016.03.235
91. Ladak K, Pope JE. A review of the effects of statins in systemic sclerosis. *Semin Arthritis Rheum* 2016; 45(6):698–705. doi:10.1016/j.semarthrit.2015.10.013
92. Abou-Raya A, Abou-Raya S, Helmii M. Statins: potentially useful in therapy of systemic sclerosis-related Raynaud's phenomenon and digital ulcers. *J Rheumatol* 2008; 35(9):1801–1808. pmid:18709692
93. ASCEND Study Collaborative Group, Bowman L, Mafham M, Walendzys K, et al. Effects of aspirin for primary prevention in persons with diabetes mellitus. *N Engl J Med* 2018; 379(16):1529–1539. doi:10.1056/NEJMoa1804988
94. Guerra F, Stronati G, Fischietti C, et al. Global longitudinal strain measured by speckle tracking identifies subclinical heart involvement in patients with systemic sclerosis. *Eur J Prev Cardiol* 2018; 25(15):1598–1606. doi:10.1177/2047487318786315
95. Mavrogeni SI, Sfrikakis PP, Dimitroulas T, et al. Prospects of using cardiovascular magnetic resonance in the identification of arrhythmogenic substrate in autoimmune rheumatic diseases. *Rheumatol Int* 2018; 38(9):1615–1621. doi:10.1007/s00296-018-4110-5
96. Mavrogeni SI, Sfrikakis PP, Markousis-Mavrogenis G, et al. Cardiovascular magnetic resonance imaging pattern in patients with autoimmune rheumatic diseases and ventricular tachycardia with preserved ejection fraction. *Int J Cardiol* 2019; 284:105–109. doi:10.1016/j.ijcard.2018.10.067

ADDRESS: Preethi Mani, MD, Department of Cardiovascular Medicine, Cleveland Clinic, 9500 Euclid Avenue, Cleveland, OH 44195; manip@ccf.org; pmani87@gmail.com

## Changed your address? Not receiving your copies?

To receive *Cleveland Clinic Journal of Medicine*, make sure the American Medical Association has your current information. *Cleveland Clinic Journal of Medicine* uses the AMA database of physician names and addresses to determine its circulation. All physicians are included in the AMA database, not just members of the AMA.

**Only YOU can update your data with the AMA.**

- If your address has changed, send the new information to the AMA. If you send the update by mail, enclose a recent mailing label. Changing your address with the AMA will redirect all of your medically related mailings to the new location.
- Be sure the AMA has your current primary specialty and type of practice. This information determines who receives *Cleveland Clinic Journal of Medicine*.
- If you ever notified the AMA that you did not want to receive mail, you will not receive *Cleveland Clinic Journal of Medicine*. If you wish to reverse that decision, simply notify the AMA, and you will again receive all AMA mailings.
- Please allow 6 to 8 weeks for changes to take effect.

**To contact the American Medical Association:**

- **PHONE** 800-621-8335
- **FAX** 312-464-4880
- **E-MAIL** [dpprodjira@ama-assn.org](mailto:dpprodjira@ama-assn.org)
- **US MAIL**

Send a recent mailing label along with new information to:

American Medical Association  
 AMA Plaza  
 Data Verification Unit  
 330 N. Wabash Ave., Suite 39300  
 Chicago, IL 60611-5885