

Smitha Ganeshan, MD, MBA

Department of Medicine, University of California San Francisco, San Francisco, CA

Benjamin Kelemen, MD

Department of Medicine, Division of Cardiology, University of California San Francisco, San Francisco, CA

Gurpreet Dhaliwal, MD

Department of Medicine, University of California San Francisco, San Francisco, CA; Medical Service, San Francisco Veterans Affairs Medical Center, San Francisco, CA

Lucas Zier, MD, MS

Department of Medicine, Division of Cardiology, University of California San Francisco, San Francisco, CA; Zuckerberg San Francisco General Hospital, San Francisco, CA

An unexpected turn: A 71-year-old man with myocardial infarction

A 71-YEAR-OLD MAN who had been previously well was brought to the emergency department by ambulance after experiencing several days of confusion and low back pain and a fall while showering. It was difficult to obtain a history owing to his altered mental status, but he said he had no chest pain or shortness of breath. His medical records were not available.

The patient's temperature was 36.8°C (101.5°F), pulse rate 98 beats per minute, respiratory rate 16 breaths per minute, and blood pressure 100/60 mm Hg. He was somnolent but had no focal weakness or sensory deficits. Cardiac and pulmonary examinations were normal.

An electrocardiogram in the emergency department revealed ST-segment elevation in leads II, III, and aVF and ST-segment depression in V₁, V₂, V₃, and aVL (Figure 1).

FURTHER STUDIES

Laboratory test results were as follows:

- White blood cell count $12.0 \times 10^9/L$ (reference range 3.9–11.7) with a neutrophilic predominance
- Hemoglobin 13.7 g/dL (13.3–17.7)
- Creatinine 1.3 mg/dL (0.7–1.3)
- Lactate 3.4 mmol/L (0.5–2.2)
- High-sensitivity troponin I 48.3 ng/L (< 4).

Computed tomography (CT) of the brain did not show any acute abnormalities, and CT aortography excluded aortic dissection.

The patient was taken emergently for cardiac catheterization for ST-segment elevation myocardial infarction (STEMI). Coronary angiography revealed a left dominant circulation with the posterior descending artery and posterolateral branches arising

from the left circumflex artery. A large filling defect was seen in the left dominant circumflex artery, and there were distal cutoffs in multiple obtuse marginal branches (Figure 2).

Balloon angioplasty followed by aspiration thrombectomy at the site of the filling defect improved coronary blood flow. The aspirated material had a yellow, organized, fibrinous appearance that was atypical for red thrombus (composed largely of red blood cells and clotting factors) or white thrombus (composed of platelets), both of which are seen during aspiration thrombectomy in acute coronary syndrome.¹

Intravascular ultrasonography showed no evidence of atherosclerotic disease in the left circumflex or left posterior descending arteries. Intracoronary nitroglycerin did not increase the caliber of the coronary vessels or resolve the filling defects.

DIFFERENTIAL DIAGNOSIS

1 Which of the following is the most likely cause of the coronary artery obstruction in this patient?

- ☐ Atherosclerotic plaque rupture with formation of intracoronary thrombus
- ☐ Coronary embolization
- ☐ Spontaneous coronary artery dissection
- ☐ Coronary vasospasm

Atherosclerotic plaque rupture leading to formation of an intracoronary thrombus is the most common cause of STEMI, but in this patient, coronary angiography did not demonstrate significant coronary atherosclerosis, and intravascular ultrasonography did not reveal a culprit plaque that had ruptured, eroded, or fissured. Furthermore, thrombectomy of the occlusive coronary thrombus in the posterior descending

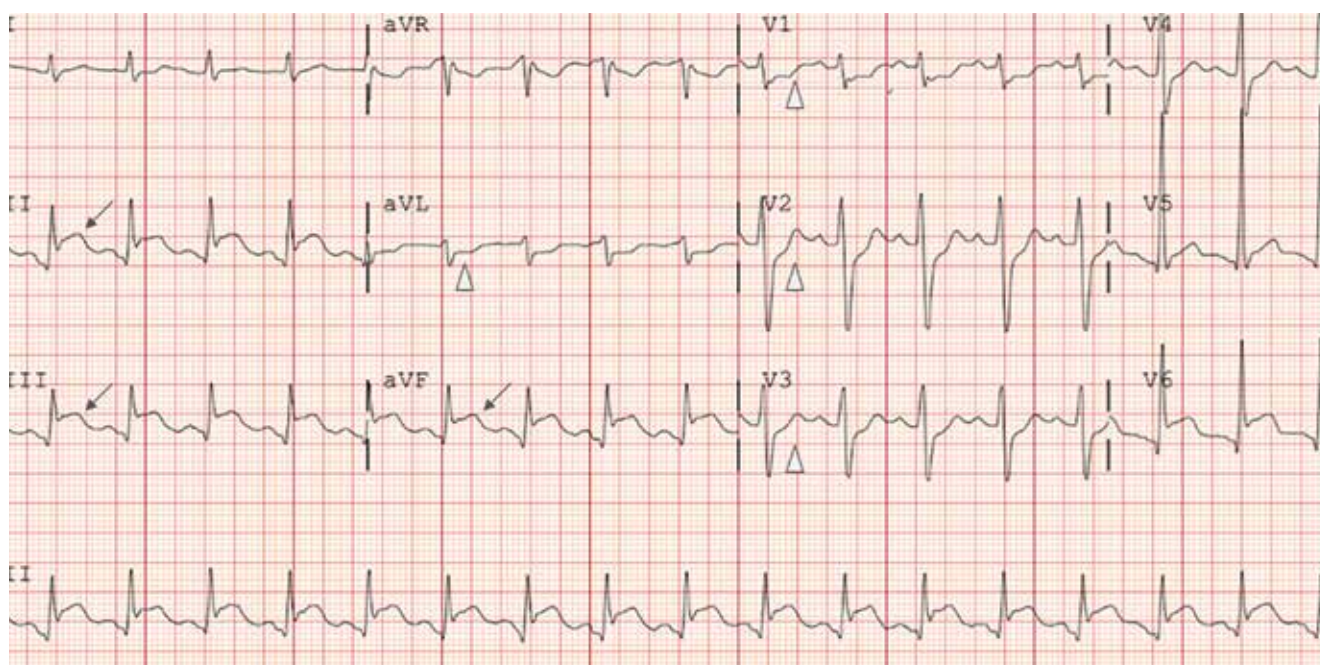


Figure 1. The patient's electrocardiogram in the emergency department showed ST-segment elevation (arrows) in leads II, III, and aVF, and ST-segment depressions (triangles) in V₁, V₂, V₃, and aVL.

artery returned fibrinous material that was not consistent with the appearance of a typical red or white thrombus of an atherosclerotic plaque rupture.

Spontaneous coronary artery dissection usually affects middle-aged women (90% of patients); it also accounts for 15% of myocardial infarctions during pregnancy or the peripartum periods.^{2,3} Furthermore, the patient had no angiographic or intravascular ultrasonographic evidence of artery dissection.

Coronary vasospasm can cause angina and infarction, often in association with ST-segment elevation. Angiography can reveal concomitant atherosclerosis or isolated vasospasm, neither of which was detected. The finding of occlusive filling defects on coronary angiography that improved with balloon angioplasty and aspiration excludes vasospasm as the primary cause of STEMI.

Embolism. The multiple distal cutoffs in the obtuse marginal branches are most consistent with an embolic event throughout the left dominant circumflex coronary artery.

■ CASE CONTINUED: RETURN FOR CATHETERIZATION

The patient was admitted to the coronary care unit. Over the next 24 hours, his temperature increased to 38.9 °C (102.0 °F), his white blood cell count

increased to $29.7 \times 10^9/L$, and he developed hypoxic respiratory failure, acute kidney injury, and refractory shock despite antibiotics, vasopressors, and fluids.

Transthoracic echocardiography showed an ejection fraction of less than 20% and akinesis of the inferior, posterior, and lateral walls of the left ventricle. The patient's clinical team thought that this degree of cardiac dysfunction was disproportionate to an inferoposterolateral infarct from a single lesion in the left circumflex artery and small distal cutoffs in obtuse marginal branches.

Given the unclear etiology of the patient's shock and poor response to fluids, antibiotics, and vasopressors, he was taken back to the cardiac catheterization laboratory on hospital day 2 for right and left heart catheterization.

Right heart catheterization showed elevated right-sided and left-sided filling pressures, with the following values:

- Pulmonary capillary wedge pressure 32 mm Hg (reference range < 12)
- Cardiac index 1.7 (2.5–4.5)
- Cardiac output 4.2 L (4–8)
- Systemic vascular resistance 1,200 dynes/seconds/cm² (800–1,200) on multiple vasopressors
- Mean right atrial pressure 15 mm Hg (2–6).

Left heart catheterization showed normal flow through the previously occluded left dominant circum-

flex artery and its obtuse marginal branches. However, multiple new cutoffs were noted in the distal obtuse marginal arteries, consistent with repeat coronary embolization.

■ INTERPRETING THE HEMODYNAMIC MEASUREMENTS

2 The patient's hemodynamic measurements point to which of the following mechanisms of shock?

- ☐ Distributive
- ☐ Cardiogenic
- ☐ Mixed distributive and cardiogenic
- ☐ Hypovolemic

Right heart catheterization is performed by advancing a balloon-tipped catheter through the right-sided chambers of the heart in the direction of blood flow and measuring filling pressures, oxygen saturation, and cardiac output. Cardiac output is calculated using the thermodilution or Fick method. Systemic vascular resistance is calculated based on the mean arterial pressure, central venous pressure, and cardiac output.

Hemodynamic measurements that can be used to determine the mechanism of shock (Table 1). The different types of shock include the following:

Distributive shock occurs when blood vessels are abnormally dilated, such as in sepsis or anaphylaxis. The cardiac output is usually normal or high, the systemic vascular resistance is low, and the pulmonary capillary wedge pressure is low.

Cardiogenic shock occurs when the heart fails to pump adequately, such as after myocardial infarction. The cardiac output is low, the systemic vascular resistance is high, and the pulmonary capillary wedge pressure is usually high.

Hypovolemic shock occurs when there is not enough volume in the intravascular space, such as after hemorrhage. The cardiac output is normal to low, systemic vascular resistance is normal to high, and pulmonary capillary wedge pressure is low.

The patient required multiple vasopressors to normalize his systemic vascular resistance, which indicated a vasodilatory state. The combination of low cardiac output and normal systemic vascular resistance on multiple vasopressors suggested mixed cardiogenic and distributive shock.

■ CASE CONTINUED: REFRACTORY SHOCK, NEW RESULTS

An intra-aortic balloon pump was placed to provide mechanical support to the left ventricle.

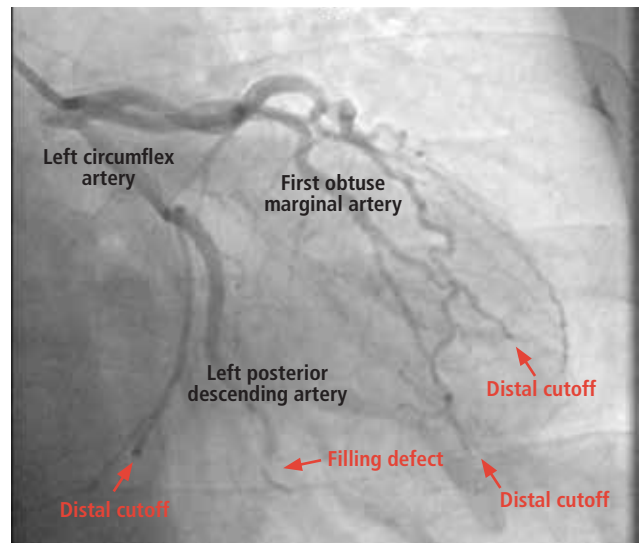


Figure 2. Coronary angiography revealed a left dominant circulation with the posterior descending artery and posterolateral branches arising from the left circumflex artery. A large filling defect was visualized in the left dominant circumflex artery as well as distal cutoffs in multiple obtuse marginal branches.

However, the patient developed progressive hypotension and persistent lactic acidosis despite the balloon pump, inotropic support, vasopressors, mechanical ventilation, and continuous venovenous hemofiltration.

Blood cultures obtained on admission returned positive for *Staphylococcus aureus*

Repeat transthoracic echocardiography demonstrated progressive left ventricular dysfunction and a new, small pericardial effusion. No valvular dysfunction or vegetations were seen.

Repeat brain CT angiography demonstrated a new subarachnoid hemorrhage that was larger on the left side than on the right, and layered along the frontal sulci near the vertex without hydrocephalus or herniation.

Serial electrocardiograms demonstrated persistent ST-segment elevations in leads II, III, and aVF; new ST elevations in V₄ and V₅; and resolution of the ST depressions in aVL, V₁, V₂, and V₃ (Figure 3).

Blood cultures obtained on admission returned positive for *Staphylococcus aureus*.

TABLE 1
Types of shock

Mechanism	Pulmonary capillary wedge pressure	Cardiac output	Systemic vascular resistance	Treatment
Distributive	Low	Normal or high	Low	Pressors Intravenous fluids Etiology-specific therapies (eg, antibiotics, epinephrine)
Cardiogenic	High	Low	High	Inotropes Mechanical circulatory support
Hypovolemic	Low	Normal or low	Normal or high	Intravenous fluids Etiology-specific therapies (eg, blood transfusion)

■ INTERPRETING THE NEW
ELECTROCARDIOGRAPHIC RESULTS

3 What is the most likely cause of this patient's persistent ST-segment elevation at the 48-hour time point?

- ☐ Recurrent ST-segment elevation myocardial infarction
- ☐ Pericarditis
- ☐ Ventricular aneurysm
- ☐ Subarachnoid hemorrhage

Recurrent ST-segment elevation myocardial infarction. After STEMI, the ST-segment and reciprocal changes typically resolve within 48 hours. The persistence of ST-segment elevation after the reciprocal changes (ST depressions) had resolved was not consistent with recurrent STEMI in the same distribution.

Ventricular aneurysm or an akinetic ventricular wall can lead to persistent ST-segment elevation following STEMI, but neither finding was detected on echocardiography or angiographic ventriculography.

In subarachnoid hemorrhage, the most common electrocardiographic waveform changes are U waves and T-wave abnormalities. ST-segment elevation is not characteristic.⁴

Pericarditis. A key challenge at this juncture was distinguishing whether the patient was having a recurrent myocardial infarction or pericarditis. His initial electrocardiogram (**Figure 1**) was consistent with an inferoposterolateral myocardial infarction and could be explained by the distribution of emboli in the coronary anatomy. His left dominant coro-

nary circulation supplied 3 major myocardial territories via the left circumflex artery and its branches: obtuse marginals supplied the lateral wall, the posterior descending artery supplied the inferior wall, and posterolateral branches supplied the posterior wall. ST-segment elevations in V₆ were caused by emboli in the obtuse marginal branches supplying the lateral wall. Embolization into the posterolateral branches supplying the posterior wall caused depressions in V₁, V₂, and V₃. Embolization in the posterior descending artery supplying the inferior wall caused elevations in II, III, and aVF and reciprocal depression in aVL.

In contrast, pericarditis is frequently associated with diffuse concave ST-segment elevation without reciprocal T-wave inversions or Q waves. (Occasionally, pericarditis manifests in focal leads).⁵ In this patient, the reciprocal depressions in aVL in the initial electrocardiogram had resolved, and new ST-segment elevations were present in V₄ and V₅ (**Figure 3**). The diffuse ST-segment elevations in a nonfocal coronary distribution, the absence of reciprocal ST depressions, and the presence of a new pericardial effusion were consistent with pericarditis.

■ CASE CONTINUED:
A DEFINITIVE DIAGNOSIS

On hospital day 3, the patient underwent transesophageal echocardiography, which showed an 8-mm vegetation on the aortic valve without aortic regurgitation (**Figure 4**). The patient was diagnosed with *S aureus* endocarditis complicated by coronary and cerebral embolization; cerebral embolization was suspected to be the cause of the subarachnoid hem-

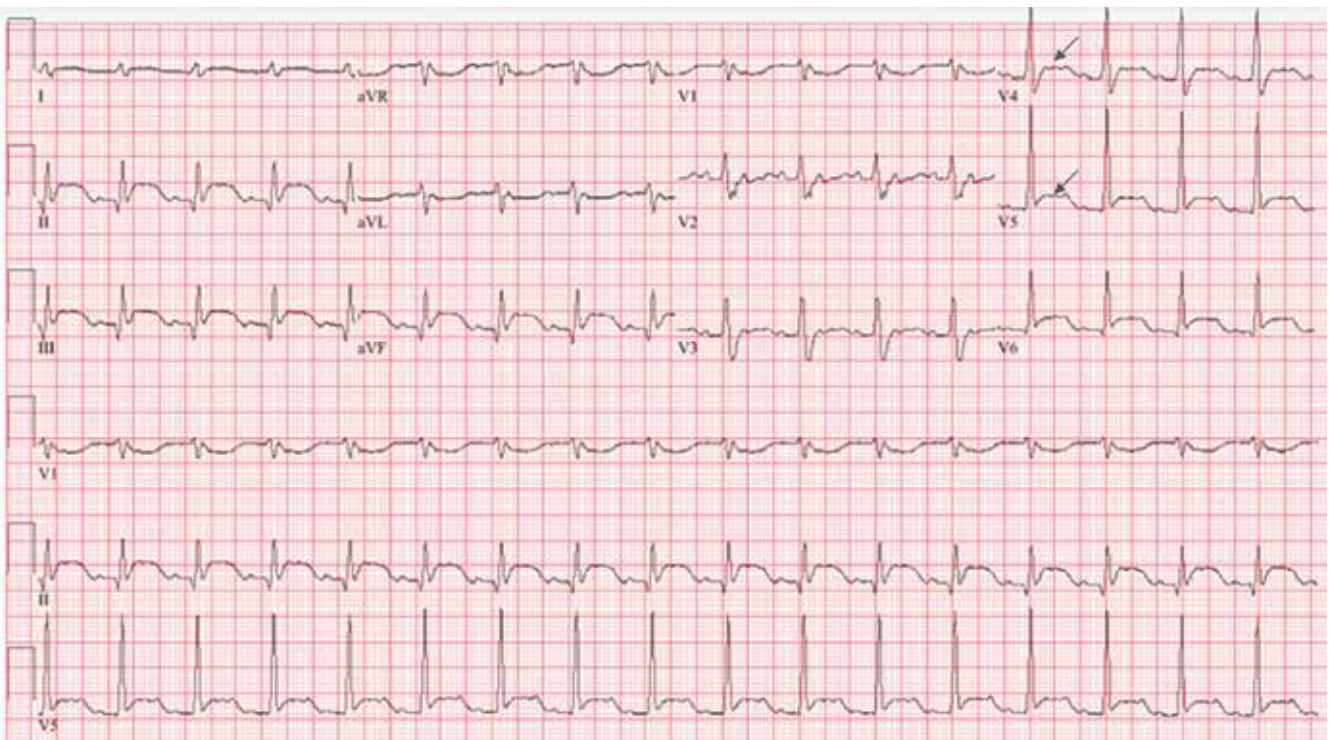


Figure 3. On repeat electrocardiography 48 hours after presentation, the ST-segment elevations in leads II, III, and aVF were still present. The ST-segment depressions in aVL and V₁–V₃ had resolved, and new ST-segment elevations were present in V₄ and V₅ (arrows).

orrhage on CT. Magnetic resonance imaging of the spine excluded spinal infection.

The patient underwent aortic valve replacement. Intraoperatively, he was found to have purulent pericarditis, with pericardial fluid that grew *S aureus*. The aortic valve had a 1 cm × 2 cm vegetation on the non-coronary leaflet. A bioprosthetic aortic valve was implanted.

The patient could not be weaned from cardiopulmonary bypass and was placed on extracorporeal membrane oxygenation. On day 5 of hospitalization, he developed refractory sepsis and died.

■ SEPTIC CORONARY EMBOLIZATION

Infective endocarditis accounts for 1.58 million disability-adjusted life-years globally per year.⁶ Autopsy reports have shown that as many as 60% of patients who die with infective endocarditis have microemboli in the coronary circulation.^{7–9} However, only 3% to 11% of patients with infective endocarditis present with signs and symptoms of myocardial infarction attributed to macroemboli.^{8,10}

The lower incidence of septic macroemboli causing coronary occlusion may be because of the brisk

flow past the coronary ostia, the caliber differences between the aorta and the coronary arteries, the acute angle at which the coronary arteries branch from the aorta, and the favorable positioning of the coronary ostia behind the aortic valve cusps during systole, which may protect them from emboli.¹¹ The risk of embolization is highest in patients with *S aureus* endocarditis and aortic valve endocarditis.¹²

Several case reports and small case series describe coronary embolism as a complication of infective endocarditis.^{8,10,13–15} A review found that a murmur was present in almost 90% of cases.⁸ In a case series, 13 of 14 patients had moderate to severe valvular regurgitation on echocardiography.¹⁴

Emboli most commonly enter the left coronary artery and travel to the left anterior descending artery, which generally has minimal angulation in its takeoff from the left main artery. In contrast, the circumflex artery typically branches at a 90-degree angle from the left main artery.^{8,11}

Patients with STEMI from septic coronary emboli have a higher mortality rate than those with atherosclerotic myocardial infarction, both in the hospital (41% vs 3%–6%) and at 30 days (43% vs 2%–10%).⁸



Figure 4. Transesophageal echocardiography on hospital day 3 showed an 8-mm vegetation on the aortic valve (arrow).

Treatment

Evidence-based recommendations are available to guide antibiotic selection in infective endocarditis,¹⁶ but none exist on the management of septic coronary embolization.

Expert opinion supports early coronary angiography even when infective endocarditis is suspected, since coronary embolism is clinically indistinguishable from atherosclerotic plaque rupture at the time of presentation.^{17,18} Intravascular ultrasonography may be used to distinguish plaque erosion from embolus.

Aspiration thrombectomy with or without balloon angioplasty can be done to restore normal coronary blood flow.^{19,20} However, angioplasty with stenting may establish a nidus of infection in the vessel wall.

REFERENCES

1. Mereuta OM, Rossi R, Douglas A, et al. Characterization of the 'white' appearing clots that cause acute ischemic stroke. *J Stroke Cerebrovasc Dis* 2021; 30(12):106127. doi:10.1016/j.jstrokecerebrovasdis.2021.106127
2. Kim ESH. Spontaneous coronary-artery dissection. *N Engl J Med* 2020; 383(24):2358–2370. doi:10.1056/NEJMr2001524
3. Saw J, Aymong E, Sedlak T, et al. Spontaneous coronary artery dissection: association with predisposing arteriopathies and precipitating stressors and cardiovascular outcomes. *Circ Cardiovasc Interv* 2014; 7(5):645–655. doi:10.1161/CIRCINTERVENTIONS.114.001760
4. Chatterjee S. ECG Changes in subarachnoid haemorrhage: a synopsis. *Neth Heart J* 2011; 19(1):31–34. doi:10.1007/s12471-010-0049-1
5. LeWinter MM. Clinical practice. Acute pericarditis. *N Engl J Med* 2014; 371(25):2410–2416. doi:10.1056/NEJMc1404070
6. Murray CJ, Vos T, Lozano R, et al. Disability-adjusted life years (DALYs) for 291 diseases and injuries in 21 regions, 1990–2010: a systematic analysis for the Global Burden of Disease Study 2010. *Lancet* 2012; 380(9859):2197–2223. doi:10.1016/S0140-6736(12)61689-4

Intracoronary thrombolytics, antiplatelet agents, and anticoagulants have also been used for small distal emboli, although these treatments carry higher risks of intracranial and systemic bleeding in patients with infective endocarditis.^{8,21}

In this patient's case, the initial presentation suggested typical STEMI due to atherosclerotic coronary artery disease. However, the angiographic, hemodynamic, and microbiologic data directed the clinicians toward a rarer cause of acute coronary syndrome—*infective endocarditis*. Infections of cardiac valves commonly cause morbidity through direct cardiac invasion and distant emboli. This patient's case reminds us that emboli from heart valve vegetations sometimes take an unexpected turn.

TAKE-HOME POINTS

- If angiography for STEMI does not reveal evidence of atherosclerotic plaque rupture, consider other causes of STEMI including coronary vasospasm, dissection, and embolization.
- Fever, leukocytosis, and vessel cutoffs on angiography are early clues to septic coronary emboli; later test results, including blood cultures, vegetations on echocardiography, and mixed shock on hemodynamic measurements provide additional evidence for endocarditis.
- Patients with STEMI from septic coronary emboli have higher in-hospital and 30-day mortality rates than patients with atherosclerotic myocardial infarction.

DISCLOSURES

The authors report no relevant financial relationships which, in the context of their contributions, could be perceived as a potential conflict of interest.

7. Urmeneta Ulloa J, Molina Borao I, Sánchez-Insa E, Aured Guallar C, López Perales C, Sánchez-Rubio J. Acute coronary syndrome due to septic embolism secondary to infective endocarditis in a prosthetic mitral valve. *Rev Esp Cardiol (Engl Ed)* 2017; 70(6):502–504. doi:10.1016/j.rec.2016.10.003
8. Nazir S, Elgin E, Loynd R, Zaman M, Donato A. ST-elevation myocardial infarction associated with infective endocarditis. *Am J Cardiol* 2019; 123(8):1239–1243. doi:10.1016/j.amjcard.2019.01.033
9. Roxas CJ, Weekes AJ. Acute myocardial infarction caused by coronary embolism from infective endocarditis. *J Emerg Med* 2011; 40(5):509–514. doi:10.1016/j.jemermed.2007.12.041
10. Bitay M, Varga S, Babik B, Havasi K, Szűcsboros T. Infective endocarditis complicated with coronary artery septic embolization: is it worth to be mentioned? Case presentation and review of the literature. *Rev Cardiovasc Med* 2019; 20(1):35–39. doi:10.31083/j.rcm.2019.01.4241
11. Prizel KR, Hutchins GM, Bulkley BH. Coronary artery embolism and myocardial infarction. *Ann Intern Med* 1978; 88(2):155–161. doi:10.7326/0003-4819-88-2-155
12. Fabri J Jr, Issa VS, Pomerantzeff PM, Grinberg M, Barretto AC, Mansur AJ. Time-related distribution, risk factors and prognostic

- influence of embolism in patients with left-sided infective endocarditis. *Int J Cardiol* 2006; 110(3):334–339. doi:10.1016/j.ijcard.2005.07.016
13. Shibata T, Kawakami S, Noguchi T, et al. Prevalence, clinical features, and prognosis of acute myocardial infarction attributable to coronary artery embolism. *Circulation* 2015; 132(4):241–250. doi:10.1161/CIRCULATIONAHA.114.015134
 14. Manzano MC, Vilacosta I, San Román JA, et al. Acute coronary syndrome in infective endocarditis. *Rev Esp Cardiol* 2007; 60(1):24–31. pmid:17288952
 15. Oestreich BA, Sommer P, Armstrong EJ. Coronary artery embolism from infectious endocarditis treated with catheter thrombectomy using a Guideliner catheter. *Catheter Cardiovasc Interv* 2016; 87(5):E197–E201. doi:10.1002/ccd.26127
 16. Baddour LM, Wilson WR, Bayer AS, et al. Infective endocarditis in adults: diagnosis, antimicrobial therapy, and management of complications: a scientific statement for healthcare professionals from the American Heart Association. *Circulation* 2015; 132(15):1435–1486. doi:10.1161/CIR.0000000000000296
 17. Raphael CE, Heit JA, Reeder GS, et al. Coronary embolus: an underappreciated cause of acute coronary syndromes. *JACC Cardiovasc Interv* 2018; 11(2):172–180. doi:10.1016/j.jcin.2017.08.057
 18. Ukwuoma N, Villarreal D, Doobay R, Proctor J. Treatment of ST elevation myocardial infarction in the setting of infective endocarditis: a need for treatment guidelines. *Am J Ther* 2018; 25(5):e582–e584. doi:10.1097/MJT.0000000000000678
 19. Popovic B, Agrinier N, Bouchahda N, et al. Coronary embolism among ST-segment-elevation myocardial infarction patients: mechanisms and management. *Circ Cardiovasc Interv* 2018; 11(1):e005587. doi:10.1161/CIRCINTERVENTIONS.117.005587
 20. Fröbert O, Lagerqvist B, Olivecrona GK, et al. Thrombus aspiration during ST-segment elevation myocardial infarction. *N Engl J Med* 2013; 369(17):1587–1597. doi:10.1056/NEJMoa1308789
 21. Mentzelopoulos SD, Kokotsakis JN, Romana CN, Karamichali EA. Intracoronary thrombolysis and intraaortic balloon counterpulsation for the emergency treatment of probable coronary embolism after repair of an acute ascending aortic dissection. *Anesth Analg* 2001; 93(1). doi:10.1097/00000539-200107000-00013

Address: Smitha Ganeshan, MD, MBA, Department of Medicine, University of California San Francisco, 505 Parnassus Avenue, M1480, San Francisco, CA 94143; Smitha.ganeshan@ucsf.edu

Changed your address? Not receiving your copies?

To receive *Cleveland Clinic Journal of Medicine*, make sure the American Medical Association has your current information. *Cleveland Clinic Journal of Medicine* uses the AMA database of physician names and addresses to determine its circulation. All physicians are included in the AMA database, not just members of the AMA. Only YOU can update your data with the AMA.

- If your address has changed, send the new information to the AMA. If you send the update by mail, enclose a recent mailing label. Changing your address with the AMA will redirect all of your medically related mailings to the new location.
- Be sure the AMA has your current primary specialty and type of practice. This information determines who receives *Cleveland Clinic Journal of Medicine*.
- If you ever notified the AMA that you did not want to receive mail, you will not receive *Cleveland Clinic Journal of Medicine*. If you wish to reverse that decision, simply notify the AMA, and you will again receive all AMA mailings.
- Please allow 6 to 8 weeks for changes to take effect.

To contact the American Medical Association:

- **PHONE** 800-621-8335
- **FAX** 312-464-4880
- **E-MAIL** dpprodjira@ama-assn.org
- **US MAIL**
Send a recent mailing label along with new information to:

American Medical Association
AMA Plaza
Data Verification Unit
330 N. Wabash Ave., Suite 39300
Chicago, IL 60611-5885

An unexpected turn

In the July 2022 issue, an error appeared in Ganeshan S, Kelemen B, Dhaliwal G, Zier L. *An unexpected turn: A 71-year-old man with myocardial infarction*. *Cleve Clin J Med* 2022;89(7):401–407. doi:10.3949/ccjm.89a.21030. The arrows in **Figure 3** were incorrectly placed. The correct figure appears below:

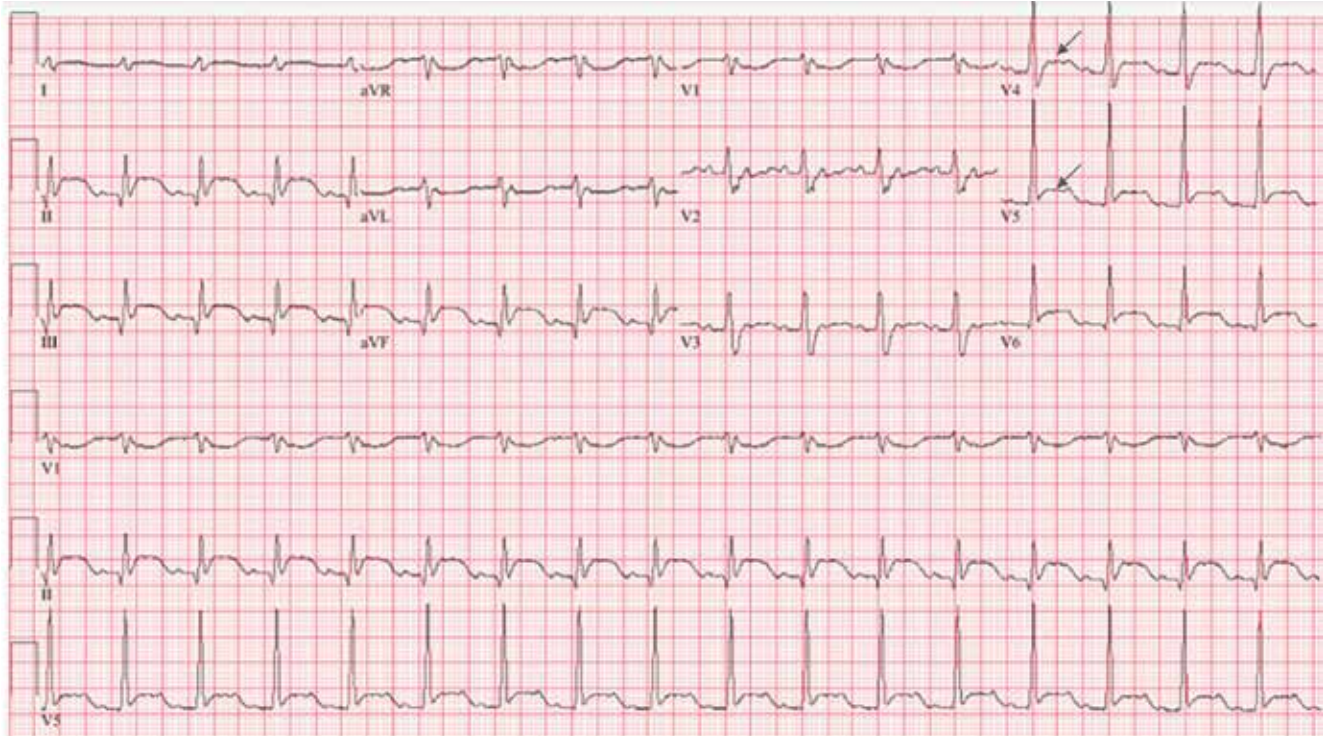


Figure 3. On repeat electrocardiography 48 hours after presentation, the ST-segment elevations in leads II, III, and aVF were still present. The ST-segment depressions in aVL and V₁–V₃ had resolved, and new ST-segment elevations were present in V₄ and V₅ (arrows).

This is now correct on ccjm.org.