

# Evolving cardiovascular applications for magnetic resonance imaging

## ROBERT G. WEISS, MD

Associate Professor of Medicine and Radiology, Division of Cardiology, Johns Hopkins Hospital and University, Baltimore

### ABSTRACT

Improvements in magnetic resonance imaging (MRI) have increased its value in existing cardiovascular applications and opened the door to new uses. The image quality and spatial resolution of cardiovascular MRI is better than that of most other noninvasive imaging procedures. In addition, MRI can measure and map biochemical markers diminished by ischemic damage.

**M**AGNETIC RESONANCE IMAGING (MRI) has improved extraordinarily over the last 10 years and is finding new applications in cardiovascular medicine. These advances will likely alter the way clinicians use MRI in the coming years. New research is showing that MRI is in some ways superior to standard imaging techniques in cardiology and that it can provide additional information not only about anatomy but also about myocardial function, perfusion, and metabolism.

### CONVENTIONAL USES FOR CARDIOVASCULAR MRI

Current clinical applications of MRI are primarily to detect aortic disease, assess congenital heart disease, and study pericardial structure, as well as left ventricular structure and function.

#### Detecting aortic dissections and aneurysms

Cardiovascular MRI has been used to assess aortic aneurysms and dissections and can pro-

vide detailed, multiplanar, quantitative, anatomic information.<sup>1</sup>

A German study<sup>2</sup> of patients presenting with suspected thoracic aortic dissection compared four noninvasive imaging tests: MRI, contrast-enhanced computed tomography, transthoracic echocardiography, and transesophageal echocardiography. A subset of 47 patients underwent all four noninvasive tests. Dissection was later independently verified by surgery, autopsy, or contrast angiography.

MRI did well, with a sensitivity and specificity of 98% (TABLE 1). In addition, MRI was as sensitive as computed tomography and transesophageal echocardiography in identifying thrombus formation throughout the entire thoracic aorta. The investigators concluded that performing MRI in all hemodynamically stable patients is the optimal approach to detecting dissection in the thoracic aorta. They recommended transesophageal echocardiography for patients who are hemodynamically unstable.

Another significant advantage of MRI over several noninvasive imaging studies for detecting thoracic aortic disease is its ability to image the branch vessels. MR angiography enhances the detection of branch vessel stenosis, intimal flaps, and communications to the false lumen.<sup>3</sup>

#### Assessing left ventricular structure and function

Cardiovascular MRI is increasingly being used to assess ventricular structure and function in the clinic and in clinical trials.<sup>4</sup> The intrinsic three-dimensional nature of MRI obviates geometric assumptions necessary to calculate ventricular mass or ejection fraction with conventional echocardiography. This, combined with cardiovascular MRI's high spatial resolu-

MRI gives information about cardiac anatomy, function, perfusion, and metabolism

tion and tissue contrast, enables the most precise measures of human myocardial mass, chamber dimensions, and ventricular function available today, even in the settings of ventricular remodeling and heart failure.<sup>5</sup> Cardiovascular MRI can also provide unique information about regional heart function that cannot be obtained by any other noninvasive technique. For example the use and detection of tissue “tagging” with MRI permits a unique assessment of transmural wall motion throughout the cardiac cycle.<sup>6,7</sup>

### Assessing congenital heart disease

The ability of cardiovascular MRI to characterize the size, geometry, and relationships between cardiac chambers and major vessels has quickly made it a very powerful technique for assessing congenital heart disease and its consequences in children and adults.<sup>8,9</sup>

### ■ TECHNICAL ADVANCES IN MRI

Technical advances in MRI have increased its cardiovascular usefulness considerably. These include increased imaging speed, sophisticated respiratory and cardiac gating techniques, and phased-array detection coils.

In the mid-1980s, cardiovascular MRI primarily used spin-echo techniques that often took 7 to 15 minutes to produce a series of images. As a result, an hour’s worth of scanning yielded only a limited set of images of several cardiac orientations. With the development of gradient-recalled imaging, which can be done in 15 to 30 seconds, scan times became short enough for patients to hold their breath during image acquisition and thus reduce the degradation caused by respiratory motion. Today, echo-planar imaging and several other new rapid-imaging techniques can acquire images in less than 50 ms and permit real-time acquisition and display rates approaching 15 frames per second.

Combining multiple MR detector surface coils into groups called “phased arrays” has enabled studies of larger fields of view and improved sensitivity, which has benefited both vascular and cardiac MRI. Techniques to suppress the signals from certain chemicals, such as those from lipids, have enabled and enhanced the visualization of the coronary

**TABLE 1**

### MRI is sensitive and specific in detecting aortic dissection

TEST	SENSITIVITY	SPECIFICITY
Magnetic resonance imaging	98%	98%
Computed tomography	94%	87%
Transthoracic echocardiography	59%	83%
Transesophageal echocardiography	98%	77%

DATA FROM NIENABER CA, VON KODOLITSCH Y, NICHOLAS V, ET AL. THE DIAGNOSIS OF THORACIC AORTIC DISSECTION BY NONINVASIVE IMAGING PROCEDURES. N ENGL J MED 1993; 328:1-9.

arteries that are normally surrounded by fat.

### ■ ASSESSING CORONARY ANATOMY

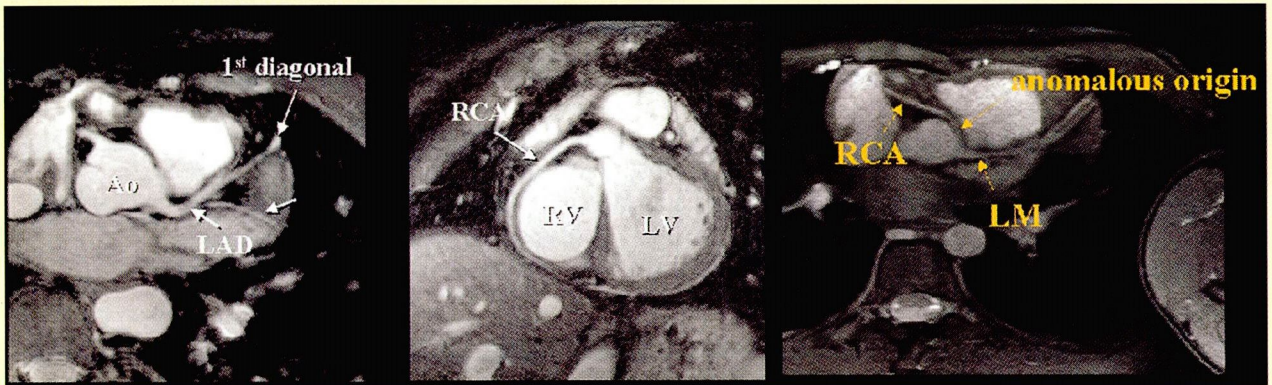
As a result of these and other developments, MRI can be used to noninvasively image the location, course, and caliber of the proximal coronary arteries (FIGURE 1).

Manning et al<sup>10,11</sup> developed some noninvasive MR approaches to study the coronary arteries and were the first to compare noninvasive MR angiography of the native coronary arteries with conventional coronary angiography. The ability to detect significant coronary stenoses by MRI varies among groups today, and thus this still rapidly evolving technique is not yet established as a routine method for detecting or quantifying coronary stenoses.<sup>1</sup>

Although MRI can image the proximal vessels in most subjects, its spatial resolution and ability to identify small, distal branch vessels still significantly lags behind that of conventional angiography. Coronary MR angiography is better established for defining the course of anomalous coronary arteries. MRI and MR angiography are more promising for assessing the patency of coronary grafts than for assessing native vessels because the former are larger. Studies suggest that the sensitivity and specificity of these techniques for detecting significant stenosis typically range between 75% and 98%.<sup>1</sup> An especially exciting area of new research is using black-blood MR (ie, in which the blood is displayed as black rather than white) to study not just the vessel lumen but the coronary wall and atherosclerotic disease.<sup>12</sup>

**MRI may be as effective as angiography in measuring coronary flow**

**MRI can image the proximal coronary arteries noninvasively**



**FIGURE 1.** Coronary magnetic resonance imaging (MRI) showing the left (**left**) and right (**center**) coronary systems in a normal subject, as well as an anomalous origin of a right coronary artery (RCA) from the left main (LM) in another patient (**right**). AO: aorta; LAD: left anterior descending; LV: left ventricle; RV: right ventricle.

SOURCE:WARREN J. MANNING, MD, BETH ISRAEL/DEACONESS HOSPITAL AND THE HARVARD MEDICAL SCHOOL.

■ **ASSESSING CARDIAC PERFUSION**

Most MRI studies of perfusion are performed using intravenous gadolinium-based (Gd) contrast materials. Unlike x-ray contrast agents, these contrast agents are not nephrotoxic and are typically injected in volumes of 10 to 20 mL.

Fundamentally, there are two types of studies with contrast agents: first-pass studies and steady-state perfusion studies. In the first case, images are rapidly acquired before and during Gd contrast injection, and the signal intensity of the right ventricle, left ventricle, and myocardium sequentially increase as the contrast agent appears. Decreased perfusion from ischemic heart disease results in a delay or reduction in the increase in myocardial signal intensity shortly after contrast administration.<sup>13</sup>

The other approach is to collect detailed MR images at least 10 minutes after Gd injection: changes in steady-state enhancement have been related to severe perfusion abnormalities and infarction.<sup>14</sup> This steady-state Gd-MRI approach probably provides the best measure of infarct size in humans today.

■ **ASSESSING WALL MOTION**

MRI stress testing of cardiac mechanical function and metabolism can be used to assess for coronary disease.

Dobutamine MRI as a test of function is especially appealing in patients with poor-quality echocardiographic studies. Hundley et al<sup>15</sup> studied 153 patients in whom it was not possible to obtain a high-quality echocardiographic study—a relatively common situation. The patients underwent dobutamine-atropine MRI for the assessment of regional wall motion. The investigators developed software that allows multiple short-axis and long-axis MRI views of the heart at each stage of the test and dose of dobutamine. In this way, they were able to compare function at different doses and terminate the test when wall motion abnormalities developed. The sensitivity and specificity of MRI for identifying luminal narrowings greater than 50% by quantitative angiography was more than 83%. Among the 103 patients with negative MRI findings, the cardiovascular event-free survival rate was 97%.

■ **DETECTING MYOCARDIAL ISCHEMIA WITH MR SPECTROSCOPY**

The heart is one of the most metabolically active organs in the body. In looking for manifestations of ischemia, physicians typically use ST-segment changes on the electrocardiogram or contractile changes on the echocardiogram or ventriculogram. However, the pri-

**MRI displays branch vessels in exquisite detail**

mary pathophysiologic consequence of ischemia is altered metabolism, which in turn leads to the secondary electrical and mechanical abnormalities.

Significant progress has been made in developing techniques to evaluate the biochemistry of the human heart with clinical MR systems. With MR spectroscopy one can quantify and map several critical metabolites and ions in the heart, including adenosine triphosphate (ATP), creatine phosphate (PCr), total creatine (CR), and sodium 23.

### **Detecting inducible ischemia with phosphorus 31 MR spectroscopy**

Phosphorus 31 (<sup>31</sup>P) MR spectroscopy can noninvasively detect and quantify the naturally occurring high-energy phosphate compounds that are essential for viability and for fueling myocardial contraction. In experimental settings, one of the earliest biochemical changes of severe ischemia is a decline in the myocardial PCr/ATP ratio.

To determine whether ischemic metabolic changes can be detected by <sup>31</sup>P MR spectroscopy in people, we studied 16 patients with coronary heart disease, 9 patients with nonischemic heart disease, and 9 age-matched normal subjects using a clinical 1.5 T MR scanner before, during, and after handgrip exercise.<sup>16</sup> The mean PCr/ATP ratio declined significantly during exercise in subjects with coronary disease but not in normal subjects.

These results were the first to demonstrate transient, stress-induced changes in human cardiac energy metabolism indicative of ischemia and have been reproduced by others.<sup>17</sup> Stress-induced metabolic changes resolve after revascularization. Thus, <sup>31</sup>P MR stress-testing is a unique, novel, and potentially important method for assessing the presence, severity, and treatment of myocardial ischemia in humans.

### **Detecting irreversible myocardial injury with hydrogen 1 spectroscopy**

Total creatine (phosphorylated plus nonphosphorylated) is important for muscle energetics and is lost from myocytes following irreversible ischemic injury.

In 1998 we described a method for mea-

suring the total creatine content in heart muscle with hydrogen 1 (<sup>1</sup>H) MR spectroscopy. We reported a significant 50% to 70% decline in cardiac creatine in nonviable infarcted regions of chronic MI patients as compared with normal subjects.<sup>18</sup>

The <sup>1</sup>H MR approach provides better spatial resolution than the <sup>31</sup>P MR approach. This may provide a metabolic method for detecting myocardial viability with cardiovascular MR, like PET scanning, but without injected radioactive isotopes or the costs of a PET scanner or cyclotron. These metabolic studies could be part of a cardiovascular MRI study that also evaluates cardiac function, perfusion, and coronary anatomy.

### **Imaging the consequences of ischemic injury with sodium 23 MRI**

The sodium concentration inside cardiac cells (approximately 10–20 mM) is normally much lower than that in the serum (approximately 140 mM). However, myocardial sodium increases dramatically following severe ischemia with reperfusion.


Sodium 23 (<sup>23</sup>Na) MRI can generate images of the naturally abundant sodium in tissues without injection of tracers or contrast agents. Sodium 23 MRI can be obtained on clinical 1.5 T MR scanners and can detect significant increases in cardiac sodium following infarction with reperfusion.<sup>19</sup>

### **■ INVASIVE CARDIAC MRI**

A long-recognized advantage of MRI for the cardiovascular system is its noninvasive nature. However, the imaging advantages of MRI technology may someday be used to enhance some interventional procedures, while modifications of intravascular catheters may be used to generate higher-quality MRI images. Specifically, MRI is being tested as a research tool in electrophysiology procedures and may better identify catheter position and permit imaging of radiofrequency injury at the time of ablation.<sup>20</sup> Likewise, intravascular catheters can be modified to become MRI receiver coils and thereby provide the best images to date of vessel wall morphology and atherosclerotic plaque geometry and composition.<sup>21,22</sup>

**MRI should help when patients cannot have stress testing or angiography**



In summary, cardiovascular MRI has several current clinical applications and rapidly evolving growth in other areas critical for the assessment and management of clinical heart disease. 

■ REFERENCES

1. Yucel EK, Anderson CM, Edelman RR, et al. Magnetic resonance angiography: update on applications for extracranial arteries. *Circulation* 1999; 100:2284-2301.
2. Nienaber CA, von Kodolitsch Y, Nicholas V, et al. The diagnosis of thoracic aortic dissection by noninvasive imaging procedures. *N Engl J Med* 1993; 328:1-9.
3. Hartnell GG, Finn JP, Zenni M, et al. MR imaging of the thoracic aorta: comparison of spin-echo, angiographic and breath-hold techniques. *Radiology* 1994; 191:697-704.
4. Bellenger NG, Grothues F, Smith GC, Pennell DJ. Quantification of right and left ventricular function by cardiovascular magnetic resonance. *Herz* 2000; 25:392-399.
5. Bellenger NG, Burgess MI, Ray SG, et al. Comparison of left ventricular ejection fraction and volumes in heart failure by echocardiography, radionuclide ventriculography and cardiovascular magnetic resonance; are they interchangeable? *Eur Heart J* 2000; 21:1387-1396.
6. Croisille P, Moore CC, Judd RM, et al. Differentiation of viable and nonviable myocardium by the use of three-dimensional tagged MRI in 2-day-old reperfused canine infarcts. *Circulation* 1999; 99:284-291.
7. Zerhouni EA. Myocardial tagging by magnetic resonance imaging. *Coron Artery Dis* 1993; 4:334-339.
8. Chung T. Assessment of cardiovascular anatomy in patients with congenital heart disease by magnetic resonance imaging. *Pediatr Cardiol* 2000; 21:18-26.
9. Didier D, Ratib O, Beghetti M, Oberhaensli I, Friedli B. Morphologic and functional evaluation of congenital heart disease by magnetic resonance imaging. *J Magn Reson Imaging* 1999; 10:639-655.
10. Manning WJ, Li W, Boyle NG, Edelman RR. Fat-suppressed breath-hold magnetic resonance coronary angiography. *Circulation* 1993; 87:94-104.
11. Manning WJ, Li W, Edelman RR. A preliminary report comparing magnetic resonance coronary angiography with conventional angiography. *N Engl J Med* 1993; 328:828-832.
12. Fayad ZA, Fuster V, Fallon JT, et al. Noninvasive in vivo human coronary artery lumen and wall imaging using black-blood magnetic resonance imaging. *Circulation* 2000; 102:506-510.
13. Wilke NM, Jerosch-Herold M, Zenovich A, Stillman AE. Magnetic resonance first-pass myocardial perfusion imaging: clinical validation and future applications. *J Magn Reson Imaging* 1999; 10:676-685.
14. Kim RJ, Fieno DS, Parrish TB, et al. Relationship of MRI delayed contrast enhancement to irreversible injury, infarct age, and contractile function. *Circulation* 1999; 100:1992-2002.
15. Hundley WG, Hamilton CA, Thomas MS, et al. Utility of fast cine magnetic resonance imaging and display for the detection of myocardial ischemia in patients not well suited for second harmonic stress echocardiography. *Circulation* 1999; 100:1697-1702.
16. Weiss RG, Bottomley PA, Hardy CJ, Gerstenblith G. Regional myocardial metabolism of high-energy phosphates during isometric exercise in patients with coronary artery disease. *N Engl J Med* 1990; 323:1593-1600.
17. Yabe T, Mitsunami K, Okada M, Morikawa S, Inubushi T, Kinoshita M. Detection of myocardial ischemia by 31P magnetic resonance spectroscopy during handgrip exercise. *Circulation* 1994; 89:1709-1716.
18. Bottomley PA, Weiss RG. Non-invasive magnetic-resonance detection of creatine depletion in non-viable infarcted myocardium. *Lancet* 1998; 351:714-718.
19. Constantinides CD, Weiss RG, Lee R, Bolar D, Bottomley PA. Restoration of low resolution metabolic images with a priori anatomic information: 23Na MRI in myocardial infarction. *Magn Reson Imaging* 2000; 18:461-471.
20. Lardo AC, McVeigh ER, Jumsirikul P, et al. Visualization and temporal/spatial characterization of cardiac radiofrequency ablation lesions using magnetic resonance imaging. *Circulation* 2000; 102:698-705.
21. Correia LC, Atalar E, Kelemen MD, et al. Intravascular magnetic resonance imaging of aortic atherosclerotic plaque composition. *Arterioscler Thromb Vasc Biol* 1997; 17:3626-3632.
22. Serfaty JM, Yang X, Aksit P, Quick HH, Solaiyappan M, Atalar E. Toward MRI-guided coronary catheterization: visualization of guiding catheters, guidewires, and anatomy in real time. *J Magn Reson Imaging* 2000; 12:590-594.

ADDRESS: Robert G. Weiss, MD, Carnegie 584, Johns Hopkins Hospital, 600 North Wolfe Street, Baltimore, MD 21205; e-mail rgweiss@rad.jhu.edu.

## We Welcome Your Letters

WE ENCOURAGE YOU TO WRITE, either to respond to an article published in the *Journal* or to address a clinical issue of importance to you. You may submit letters by mail, fax, or e-mail.

**MAILING ADDRESS**

Letters to the Editor  
*Cleveland Clinic Journal of Medicine*  
 9500 Euclid Ave., NA32  
 Cleveland, OH 44195  
**FAX** 216.444.9385  
**E-MAIL** ccjm@ccf.org

Please be sure to include your full address, phone number, fax number, and e-mail address. Please write concisely, as space is limited. Letters may be edited for style and length. We cannot return materials sent. Submission of a letter constitutes permission for the *Cleveland Clinic Journal of Medicine* to publish it in various editions and forms.