



## TABLE OF CONTENTS

## FROM THE EDITOR

**In urologic surgery,  
the legendary becomes routine** 78

To the internist, knowing *how* laparoscopic surgery is done is less important than knowing that it *can* be done, and when it is appropriate.

J.D. CLOUGH

## EDITORIAL

**The doctor's challenge:  
How can we follow guidelines better?** 81

A substantial gap exists between evidence and clinical practice. So what is the answer?

N.B. MEHTA

## REVIEW

**Pulmonary sarcoidosis:  
New genetic clues and ongoing  
treatment controversies** 88

The wide-ranging manifestations of sarcoidosis can make its diagnosis and management difficult.

D.A. CULVER, M.J. THOMASEN, AND M.S. KAVURU

## THE CLINICAL PICTURE

**Multiple leg ulcers in a traveler** 109

One month after a trip to Central America, he has two painful ulcerations and a nodule. What is the cause?

G.A. CARDENAS, A. GONZALEZ-SERVA, AND C. COHEN

## MINIMALLY INVASIVE SURGERY UPDATE

**Laparoscopic prostatectomy:  
A promising option in the treatment  
of prostate cancer** 113

We describe the technique and examine the outcome data so far.

A.P. STEINBERG AND I.S. GILL

## 1-MINUTE CONSULT

**When should patients be allowed to drive  
after ICD implantation?** 125

The problem is not the device, it is the arrhythmia. A "one-size-fits-all" approach to restricting driving should be avoided.

J.R. GIMBEL

CONTINUED ON PAGE 76

CLEVELAND  
CLINIC  
JOURNAL OF  
MEDICINE

JOHN D. CLOUGH, MD *Editor-in-Chief*  
BRIAN F. MANDELL, MD, PhD *Deputy Editor*  
PETER G. STUDER *Publisher*  
PHILLIP E. CANUTO *Executive Editor, CCJM*  
GLENN R. CAMPBELL *Executive Editor, Custom Programs*  
RAY BORAZANIAN *Managing Editor*  
DAVID A. HUDDLESTON *Manuscript Editor*  
AMY SLUGG MOORE *Patient Education Editor*  
BRUCE M. MARICH *Production Manager*  
JOSEPH A. PANGRACE *Medical Illustrator*  
DAVID R. SCHUMICK *Medical Illustrator*  
JOSEPH KANASZ *Medical Illustrator*  
IRIS TRIVILINO *Department Coordinator*  
CINDY PALMER *Billing/Accounting*

## EDITORIAL ADVISORY BOARD

MUZAFFAR AHMAD, MD  
WILMA FOWLER BERGFELD, MD  
EMMANUEL L. BRAVO, MD  
WILLIAM R. HART, MD  
ERIC A. KLEIN, MD  
FLOYD D. LOOP, MD  
DOUGLAS S. MOODIE, MD  
RICHARD H. NODAR, PHD  
WILLIAM L. PROUDFIT, MD  
WILLIAM C. SHELDON, MD  
ERIC J. TOPOL, MD  
HERBERT P. WIEDEMANN, MD

MICHAEL J. LEE, MD  
MANDY C. LEONARD, PHARM D  
ANGELO A. LICATA, MD, PHD  
DAVID L. LONGWORTH, MD  
MAURIE MARKMAN, MD  
ATUL C. MEHTA, MD  
NEIL B. MEHTA, MD  
FRANKLIN A. MICHOTA, MD  
STEVEN NISSEN, MD  
ROBERT M. PALMER, MD  
NORMAN B. RATLIFF, MD  
S. SETHU K. REDDY, MD  
MARK ROTH, MD  
DOUGLAS SEIDNER, MD  
CATHY A. SILA, MD  
HOLLY L. THACKER, MD  
JAMES THOMAS, MD  
DONALD G. VIDT, MD  
WILLIAM S. WILKE, MD  
MARC WILLIAMS, MD  
JAMES B. YOUNG, MD

## ASSOCIATE EDITORS

ALEJANDRO C. ARROLIGA, MD  
DAVID BRONSON, MD  
WILLIAM D. CAREY, MD  
BRIAN A. CLARK, PHD, MD  
BRIAN G. DONLEY, MD  
GARY FRANCIS, MD  
KATHLEEN FRANCO-BRONSON, MD  
BENJAMIN J. FREDA, DO  
STEVEN M. GORDON, MD  
BRIAN GRIFFIN, MD  
GARY HOFFMAN, MD  
BYRON J. HOOGWERF, MD  
MANI S. KAVURU, MD

CLEVELAND CLINIC  
FOUNDATION DIVISION  
OF EDUCATION  
ANDREW J. FISHLER, MD  
*Chairman*  
PHILLIP R. GARD  
*Administrator*

The *Cleveland Clinic Journal of Medicine* (ISSN 0891-1150) is published 12 times yearly by The Cleveland Clinic Foundation.

STATEMENTS AND OPINIONS expressed in the *Cleveland Clinic Journal of Medicine* are those of the authors and not necessarily of The Cleveland Clinic Foundation or its Board of Trustees.

SUBSCRIPTION RATES: U.S. and possessions: personal \$98; institutional \$124; single copy/back issue \$16. Foreign: \$124; single copy/back issue \$16. Institutional (multiple-reader rate) applies to libraries, schools, hospitals, and federal, commercial, and private institutions and organizations. Individual subscriptions must be in the names of, billed to, and paid by individuals.

POSTMASTER ADDRESS CHANGES: *Cleveland Clinic Journal of Medicine*, NA32, 9500 Euclid Avenue, Cleveland, OH 44195

SUBSCRIPTIONS, EDITORIAL, BILLING/ACCOUNTING AND PRODUCTION: (same address as above) Phone (216) 444-2661 Fax (216) 444-9385 E-mail ccjm@ccc.org http://www.ccjm.org

ADVERTISING: Joseph Dennehy, Director, Sales and Marketing, 120 Castle Ridge Rd, Manhasset, NY 11030 • Phone (516) 365-8640 • Fax (516) 365-0587

AUTHORIZATION TO PHOTOCOPY items for internal or personal use is granted by the *Cleveland Clinic Journal of Medicine*, ISSN 0891-1150, published by The Cleveland Clinic Foundation, provided that the appropriate fee is paid directly to Copyright Clearance Center, 222 Rosewood Drive, Danvers, MA 01923 USA 978-750-8400. Prior to photocopying items for educational classroom use, please contact Copyright Clearance Center, Inc., at the address above. For permission to reprint material, please fax your request with complete information to the Republication department at CCC, fax (978) 750-4470. For further information visit CCC Online at <http://www.copyright.com>. To order bulk reprints, see above.

DISCLAIMER: This information is provided for general medical education purposes only and is not meant to substitute for the independent medical judgment of a physician relative to the diagnostic and treatment options of a specific patient's medical condition. In no event will The Cleveland Clinic Foundation be liable for any decision made or action taken in reliance upon the information provided through this activity.





CONTINUED FROM PAGE 74

**MEDICAL GRAND ROUNDS**

**Common infections in clinical practice: Dealing with the daily uncertainties** 129

Urinary tract infections, vaginitis, upper respiratory tract infections, and soft-tissue infections present a number of uncertainties, including whether to start antibiotic therapy and which agents to use.

S. MOSSAD

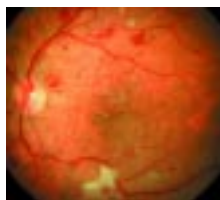
**INTERPRETING KEY TRIALS**

**ALLHAT says diuretics are better; ANBP2 says ACEs are better— Can we resolve the differences?** 145

Two major clinical trials apparently differed about which class of drugs is best for high blood pressure. Or did they?

D.G. VIDT

**REVIEW**



**The internist's role in managing diabetic retinopathy: Screening for early detection** 151

Early treatment of diabetic retinopathy can prevent visual loss. Internists can ensure that patients get screened annually.

S.H. SINCLAIR AND C. DELVECCHIO

**1-MINUTE CONSULT**

**How great is the risk of transmitting hepatitis C virus sexually?** 160

Compared with other STDs, HCV poses a very low risk of sexual transmission.

R.S. COLLANTES, AND Z.B. YOUNOSSI

**DEPARTMENTS**

**CME Calendar** 144

**2003 Reviewers** 165

**Classified Advertisements** Inside back cover

 **CME Self-test Online** 167

■ The *Cleveland Clinic Journal of Medicine* is peer-reviewed and indexed in *Index Medicus*.

# UPCOMING FEATURES

- What physicians can do to prevent suicide
- How to use omalizumab to treat asthma
- Is your schedule swamped? See patients in groups
- Drug-eluting stents: The end of restenosis?
- How to assess hyponatremia
- Does your patient need a hearing aid?
- Cancer drugs get more specific
- Perioperative nutrition support: Who and how?
- The case for insulin therapy in type 2 diabetes

■ VISIT OUR WEB SITE AT [HTTP://WWW.CCJM.ORG](http://www.ccjm.org)

