



TABLE OF CONTENTS

FROM THE EDITOR

CCJM's further evolution **1**

The honor of succeeding Dr. John Clough as Editor-in-Chief comes with the responsibility of shepherding the continued evolution of the *Journal*.

B. F. MANDELL

EDITORIAL

Coronary artery disease in diabetes: Which (if any) test is best? **6**

Until randomized trials are done, the optimal testing strategy in patients with diabetes will remain subject to lively inferential debate.

M. S. LAUER

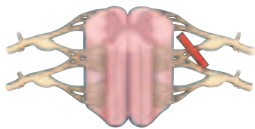
REVIEW

Diabetes and coronary artery disease: The role of stress myocardial perfusion imaging **21**

Stress myocardial perfusion imaging holds promise but needs to undergo cost-effectiveness analysis.

F. J. Th. WACKERS

REVIEW



Electrodiagnostic testing of nerves and muscles: When, why, and how to order **37**

Electrodiagnostic testing is a powerful tool, but when and how to use it is not always clear.

K. P. CHÉMALI AND B. TSAO

MEDICAL GRAND ROUNDS

Three rheumatologic emergencies: A sore toe, a cough, hypertension **50**

Rheumatologic emergencies are not always obvious, be it joint pain in a healthy patient or mild blood pressure elevation in a patient with scleroderma.

B. F. MANDELL

CONTINUED ON PAGE 4

CLEVELAND CLINIC JOURNAL OF MEDICINE



BRIAN F. MANDELL, MD, PhD *Editor-in-Chief*
 PETER G. STUDER *Publisher*
 PHILLIP E. CANUTO *Executive Editor, CCJM*
 GLENN R. CAMPBELL *Executive Editor, Custom Programs*
 RAY BORAZANIAN *Managing Editor*
 DAVID A. HUDDLESTON *Manuscript Editor*
 AMY SLUGG MOORE *Patient Education Editor*
 BRUCE M. MARICH *Production Manager*
 JOSEPH A. PANGRACE *Medical Illustrator*
 DAVID R. SCHUMICK *Medical Illustrator*
 JOSEPH KANASZ *Medical Illustrator*
 IRIS TRIVILINO *Department Coordinator*
 KATHY DUNASKY *Department Coordinator*
 CINDY PALMER *Billing/Accounting*

ASSOCIATE EDITORS

ALEJANDRO C. ARROLIGA, MD
 DAVID BRONSON, MD
 DANIEL J. BROTMAN, MD
 WILLIAM D. CAREY, MD
 BRIAN A. CLARK, PHD, MD
 GARY FRANCIS, MD
 KATHLEEN FRANCO-BRONSON, MD
 STEVEN M. GORDON, MD
 BRIAN GRIFFIN, MD
 GARY HOFFMAN, MD
 BYRON J. HOOGWERF, MD
 JESSE JACOB, MD
 AMIR JAFFER, MD
 MANI S. KAVURU, MD
 MARTIN LASCANO, MD
 MANDY C. LEONARD, PHARM D
 ANGELO A. LICATA, MD, PHD
 ATUL C. MEHTA, MD
 FRANKLIN A. MICHOTA, MD
 ROBERT M. PALMER, MD
 S. SETHU K. REDDY, MD
 DOUGLAS SEIDNER, MD

HOLLY L. THACKER, MD

DONALD G. VIDT, MD
 WILLIAM S. WILKE, MD
 MARC WILLIAMS, MD

EDITORS EMERITUS

JOHN D. CLOUGH, MD
 HERBERT P. WIEDEMANN, MD
 JAMES S. TAYLOR, MD

CLEVELAND CLINIC FOUNDATION

DELOS M. COSGROVE, MD
President and Chief Executive Officer

CLEVELAND CLINIC FOUNDATION DIVISION OF EDUCATION

ANDREW J. FISHLER, MD
Chairman
 PHILLIP R. GARD
Administrator

REPRINTS: Cindy Palmer 216-444-2661 palmerc@ccf.org

The *Cleveland Clinic Journal of Medicine* (ISSN 0891-1150) is published 12 times yearly by The Cleveland Clinic Foundation.

STATEMENTS AND OPINIONS expressed in the *Cleveland Clinic Journal of Medicine* are those of the authors and not necessarily of The Cleveland Clinic Foundation or its Board of Trustees.

SUBSCRIPTION RATES: U.S. and possessions: personal \$103; institutional \$129; single copy/back issue \$18. Foreign: \$129; single copy/back issue \$18. Institutional (multiple-reader rate) applies to libraries, schools, hospitals, and federal, commercial, and private institutions and organizations. Individual subscriptions must be in the names of, billed to, and paid by individuals.

POSTMASTER ADDRESS CHANGES: *Cleveland Clinic Journal of Medicine*, NA32, 9500 Euclid Avenue, Cleveland, OH 44195

SUBSCRIPTIONS, EDITORIAL, BILLING/ACCOUNTING AND PRODUCTION: (same address as above) Phone (216) 444-2661 Fax (216) 444-9385 E-mail ccjm@ccf.org <http://www.ccjm.org>

ADVERTISING: Joseph Dennehy, Director, Sales and Marketing, 120 Castle Ridge Rd, Manhasset, NY 11030 • Phone (516) 365-8640 • Fax (516) 365-0587

AUTHORIZATION TO PHOTOCOPY items for internal or personal use is granted by the *Cleveland Clinic Journal of Medicine*, ISSN 0891-1150, published by The Cleveland Clinic Foundation, provided that the appropriate fee is paid directly to Copyright Clearance Center, 222 Rosewood Drive, Danvers, MA 01923 USA 978-750-8400. Prior to photocopying items for educational classroom use, please contact Copyright Clearance Center, Inc., at the address above. For permission to reprint material, please fax your request with complete information to the Republication department at CCC, fax (978) 750-4470. For further information visit CCC Online at <http://www.copyright.com>. To order bulk reprints, see above.

DISCLAIMER: This information is provided for general medical education purposes only and is not meant to substitute for the independent medical judgment of a physician relative to the diagnostic and treatment options of a specific patient's medical condition. In no event will The Cleveland Clinic Foundation be liable for any decision made or action taken in reliance upon the information provided through this activity.

COPYRIGHT © 2005 THE CLEVELAND CLINIC FOUNDATION PRINTED IN U.S.A.





CONTINUED FROM PAGE 2

IM BOARD REVIEW 57

A 46-year-old woman with rigidity and frequent falls 57

Her symptoms began 3 years ago and have progressed rapidly. Is it Parkinson disease, or is it another movement disorder?

B. TOUSI, S. U. SCHUELE AND T. SUBRAMANIAN

1-MINUTE CONSULT 67

Should adults with suspected acute bacterial meningitis get adjunctive corticosteroids? 67

Yes, they should receive dexamethasone starting with or immediately before the first dose of antibiotics.

J. C. PILE AND D. L. LONGWORTH

MEDICAL GRAND ROUNDS 73

HIV update 2005: Origins, issues, prospects, and complications 73

Therapy is out of reach for most people who need it in developing nations. Side effects of long-term therapy include fat redistribution, insulin resistance, dyslipidemia, and increased cardiovascular risk.

W. ARMSTRONG, L. CALABRESE, AND A. J. TAEGE

PATIENT-ORIENTED EVIDENCE THAT MATTERS (POEMs) 13

- **Antioxidants don't prevent GI cancers, and they increase overall mortality** 13
- **Bariatric surgery effective for morbid obesity** 14
- **Esterified estrogen not associated with VTE risk** 16
- **Physical therapy adds little to back pain treatment** 17

DEPARTMENTS 34

- CME Calendar** 34
- Instructions to Authors** 72
- CME Self-test Online** 79

■ The *Cleveland Clinic Journal of Medicine* is peer-reviewed and indexed in *Index Medicus*.

UPCOMING FEATURES

- **Deciphering and applying the updated lipid guidelines**
- **Wider role for HPV testing in cervical cancer screening**
- **CT of the heart: Principles, progress, uses**
- **Better treatment for varicose veins**
- ***H pylori*: When and how to test and treat**
- **Erectile dysfunction for the primary care physician**
- **Evolving indications for liver biopsy**
- **Intimate partner violence: An epidemic hiding in plain sight**

■ VISIT OUR WEB SITE AT [HTTP://WWW.CCM.ORG](http://www.ccm.org)



DEDICATED TO LIFELONG LEARNING
CLEVELAND CLINIC JOURNAL OF MEDICINE