



## TABLE OF CONTENTS

## FROM THE EDITOR.....

**The uric acid hypothesis:  
Out with the old, in with the...old** 1038

The death knell for the idea that serum urate mediates cardiovascular disease tolled about 25 years ago. But now the concept is being revived.

B.F. MANDELL

## EDITORIAL.....

**Hope drives antiaging hype** 1039

The road to perpetual youth is paved with (fool's) gold.

T.T. PERLS

## REVIEW.....

**Antioxidants and hormones  
as antiaging therapies:  
High hopes, disappointing results** 1049

We review the evidence of efficacy (or lack thereof) for two types of agents touted as antiaging therapies.

N.S. KAMEL, J. GAMMACK, O. CEPEDA, AND J.H. FLAHERTY

## MEDICAL GRAND ROUNDS.....

**Role of uric acid in hypertension,  
renal disease, and metabolic syndrome** 1059

Clinical gout is just the tip of the iceberg: we believe that elevated uric acid is actually one of the most important risk factors for cardiovascular disease and that it plays a role in renal disease and metabolic syndrome as well.

M. HEINIG AND R.J. JOHNSON

## REVIEW.....

**Cystic fibrosis in adults:  
An overview for the internist** 1065

Cystic fibrosis is no longer a purely pediatric disease; the median life expectancy is now more than 40 years.

A.J. GERSHMAN, A.C. MEHTA, M. INFELD, AND M.M. BUDEV

CONTINUED ON PAGE 1036

CLEVELAND  
CLINIC  
JOURNAL OF  
MEDICINE

## EDITORIAL STAFF

BRIAN F. MANDELL, MD, PhD *Editor-in-Chief*  
DAVID D. K. ROLSTON, MD *Deputy Editor*  
PHILLIP E. CANUTO *Executive Editor*  
RAY BORAZANIAN *Managing Editor*  
DAVID A. HUDDLESTON *Manuscript Editor*  
JOSEPH A. PANGRACE *Medical Art Director*  
AMY SLUGG MOORE *Patient Education Editor*

## PUBLISHING OPERATIONS

PETER G. STUDER *Publisher*  
BRUCE M. MARICH *Production Manager*  
IRIS TRIVILINO *Department Coordinator*  
LAURIE WEISS *Billing/Accounting*

## CUSTOM PROGRAMS

GLENN R. CAMPBELL *Executive Editor*  
WAYNE KUZNAR *Editorial Project Leader*  
KATHY DUNASKY *Production Manager*

## ASSOCIATE EDITORS

ALEJANDRO C. ARROLIGA, MD  
ARMAN T. ASKARI, MD  
MICHAEL BOLOOKI, MD  
DAVID BRONSON, MD  
DANIEL J. BROTMAN, MD  
WILLIAM D. CAREY, MD  
EIZA CHING, MD  
GARY FRANCIS, MD  
KATHLEEN FRANCO-BRONSON, MD  
STEVEN M. GORDON, MD  
BRIAN GRIFFIN, MD  
GARY HOFFMAN, MD  
BYRON J. HOOGWERF, MD  
AMIR JAFFER, MD  
GURJIT KAUR, DO  
DERK W. KRIEGER, MD  
MANDY C. LEONARD, PharmD  
ANGELO A. LICATA, MD, PhD  
ATUL C. MEHTA, MD  
FRANKLIN A. MICHOTA, MD  
ROBERT M. PALMER, MD  
S. SETHU K. REDDY, MD

## CURTIS RIMMERMAN, MD

DOUGLAS SEIDNER, MD  
BERNARD J. SILVER, MD  
DONALD G. VIDT, MD  
WILLIAM S. WILKE, MD  
MARC WILLIAMS, MD

## EDITORS EMERITI

JOHN D. CLOUGH, MD  
HERBERT P. WIEDEMANN, MD  
JAMES S. TAYLOR, MD

## CLEVELAND CLINIC

DELOS M. COSGROVE, MD  
*President and Chief Executive Officer*

## CLEVELAND CLINIC

DIVISION OF EDUCATION  
ANDREW J. FISHLER, MD  
*Chairman*  
PHILLIP R. GARD  
*Administrator*

REPRINTS: Laurie Weiss 216-444-2661 E-mail ccjm@ccf.org

*Cleveland Clinic Journal of Medicine* (ISSN 0891-1150) is published monthly by Cleveland Clinic from editorial offices at 9500 Euclid Avenue, Cleveland, OH 44195. Periodicals postage paid at Cleveland, OH, and at additional mailing offices. POSTMASTER: Send address changes to the *Cleveland Clinic Journal of Medicine*, NA32, 9500 Euclid Avenue, Cleveland, OH 44195.

STATEMENTS AND OPINIONS expressed in the *Cleveland Clinic Journal of Medicine* are those of the authors and not necessarily of Cleveland Clinic or its Board of Trustees.

SUBSCRIPTION RATES: U.S. and possessions: personal \$103; institutional \$129; single copy/back issue \$18. Foreign: \$129; single copy/back issue \$18. Institutional (multiple-reader rate) applies to libraries, schools, hospitals, and federal, commercial, and private institutions and organizations. Individual subscriptions must be in the names of, billed to, and paid by individuals.

SUBSCRIPTIONS, EDITORIAL, BILLING/ACCOUNTING, AND PRODUCTION: (same address as above) • Phone (216) 444-2661 • Fax (216) 444-9385 • E-mail ccjm@ccf.org • Web site www.ccjm.org

ADVERTISING: Joseph Dennehy, Director, Sales and Marketing, 120 Castle Ridge Rd, Manhasset, NY 11030 • Phone (516) 365-8640 • Fax (516) 365-0587 • E-mail JoeDennehy24@aol.com

AUTHORIZATION TO PHOTOCOPY items for internal or personal use is granted by the *Cleveland Clinic Journal of Medicine*, ISSN 0891-1150, published by The Cleveland Clinic, provided that the appropriate fee is paid directly to Copyright Clearance Center, 222 Rosewood Drive, Danvers, MA 01923 USA 978-750-8400. Prior to photocopying items for educational classroom use, please contact Copyright Clearance Center, Inc., at the address above. For permission to reprint material, please fax your request with complete information to the Republication department at CCC, fax (978) 750-4470. For further information visit CCC online at www.copyright.com. To order bulk reprints, see above.

DISCLAIMER: This information is provided for general medical education purposes only and is not meant to substitute for the independent medical judgment of a physician relative to the diagnostic and treatment options of a specific patient's medical condition. In no event will Cleveland Clinic be liable for any decision made or action taken in reliance upon the information provided through this activity.

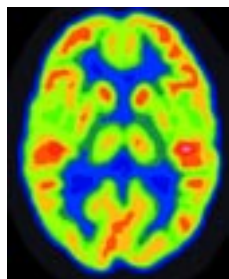
COPYRIGHT© 2006 THE CLEVELAND CLINIC FOUNDATION. ALL RIGHTS RESERVED. PRINTED IN U.S.A.





CONTINUED FROM PAGE 1034

REVIEW.....



**PET and PET/CT imaging: What clinicians need to know** 1075

How positron emission tomography (PET) and PET/computed tomography (PET/CT) work and are showing promise in clinical oncology, cardiology, and neurology.

B. BYBEL, R.C. BRUNKEN, S.N. SHAH, G. WU, E. TURBINER, AND D.R. NEUMANN

THE CLINICAL PICTURE.....

**A woman with aplastic anemia and a rash** 1088

A patient who is receiving multiple drugs, including several antibiotics, develops a rash on her chest, abdomen, and extremities. What is the most likely diagnosis?

I. TAMASKAR, E. SEGOTA, M. KALAYCIO, AND J. MACIEJEWSKI

IM BOARD REVIEW.....

**Hypotension in the intensive care unit** 1091

Our patient's vital signs: temperature 98.4°F, pulse 96 and regular, respirations 23, blood pressure 76/44 mm Hg, central venous pressure 21 mm Hg. What is the likely cause of his hypotension?

A. AL-HAZZOURI AND P. MAZZONE

MEDICAL PROBLEMS IN PREGNANCY.....

**Treating depression in pregnancy: Practical suggestions** 1098

Treating depression in a pregnant woman is a balance between relieving the mother's depression and minimizing the baby's exposure to potentially harmful drugs.

L. GONSALVES AND I. SCHUERMEYER

PATIENT-ORIENTED INFORMATION THAT MATTERS (POEMs).....

■ **Cardiovascular interventions in older elderly are not useful** 1048

DEPARTMENTS.....

<b>CME Calendar</b>	<b>1047</b>
<b>Index to Volume 73</b>	<b>1105</b>
<b>CME Self-test Online</b>	<b>1111</b>

■ The *Cleveland Clinic Journal of Medicine* is peer-reviewed and indexed in *Index Medicus*.

# UPCOMING FEATURES

- When and how to fix a hole in the heart
- Managing incontinence after prostate surgery
- Choosing the right coronary test
- Understanding the resurgence of mumps
- What does antiplatelet resistance mean to the clinician?
- Do not mistake bipolar for unipolar depression
- Obstructive sleep apnea is linked to multiple diseases

■ VISIT OUR WEB SITE AT [WWW.CCJM.ORG](http://WWW.CCJM.ORG)

