

TABLE OF CONTENTS

FROM THE EDITOR

Vertebroplasty, evidence, and health care reform: 497
What is quality care?

Two recent trials found that a popular procedure for fixing vertebral fractures lacks efficacy. Like it or not, in the future, such evidence is going to affect whether insurers pay for care.

B.F. MANDELL

EDITORIAL

Should catheter ablation be the first line of treatment for atrial fibrillation? 503

Antiarrhythmic drugs should remain the first line of treatment until trials prove otherwise.

B.D. LINDSAY

CME CREDIT REVIEW

Influenza in long-term care facilities: 513
Preventable, detectable, treatable

Vaccination is the most important preventive measure. Early detection, infection control measures, prompt treatment, and preventive treatment of contacts can also help curtail an outbreak.

S.B. MOSSAD

CME CREDIT REVIEW

Role of MRI in breast cancer management 525

MRI might be indicated for workup of possible breast cancer, but not for screening except in women at high risk.

L. ENRIQUEZ AND J. LISTINSKY

CONTINUED ON PAGE 496

CLEVELAND CLINIC JOURNAL OF MEDICINE

EDITORIAL STAFF

BRIAN F. MANDELL, MD, PhD *Editor-in-Chief*
 TIMOTHY GILLIGAN, MD, MS *Deputy Editor*
 PHILLIP E. CANUTO *Executive Editor*
 RAY BORAZANIAN *Managing Editor*
 DAVID A. HUDDLESTON *Manuscript Editor*
 JOSEPH A. PANGRACE *Medical Art Director*
 AMY SLUGG MOORE *Patient Education Editor*

PUBLISHING OPERATIONS

PETER G. STUDER *Executive Publisher*
 KRISTI THOMSEN *Exec. Editor, Special Assignments*
 BRUCE M. MARICH *Production Manager*
 IRIS TRIVILINO *Department Coordinator*
 LAURIE WEISS *Accountant (Billing)*

CUSTOM PROGRAMS

GLENN R. CAMPBELL *Executive Editor*
 KATHY DUNASKY *Production Manager*

ASSOCIATE EDITORS

ALEJANDRO C. ARROLIGA, MD
 ARMAN T. ASKARI, MD
 DANIEL J. BROTMAN, MD
 WILLIAM D. CAREY, MD
 JERIMIAH P. DEPTA, MD
 RUTH M. FARRELL, MD, MA
 GARY FRANCIS, MD
 KATHLEEN FRANCO-BRONSON, MD
 STEVEN M. GORDON, MD
 BRIAN GRIFFIN, MD
 AMIR JAFFER, MD
 MANDY C. LEONARD, PharmD
 ANGELO A. LICATA, MD, PhD
 ATUL C. MEHTA, MD
 FRANKLIN A. MICHOTA, MD
 CHRISTIAN NASR, MD
 ROBERT M. PALMER, MD
 JOSHUA D. PENFIELD, MD
 DAVID D. K. ROLSTON, MD
 BERNARD J. SILVER, MD
 TYLER STEVENS, MD

THEODORE SUH, MD, PhD, MMSc
 ALEXANDRA VILLA-FORTE, MD, MPH
 DONALD G. VIDT, MD
 WILLIAM S. WILKE, MD
 MARC WILLIAMS, MD

EDITORS EMERITI

JOHN D. CLOUGH, MD
 HERBERT P. WIEDEMANN, MD
 JAMES S. TAYLOR, MD

CLEVELAND CLINIC

DELOS M. COSGROVE, MD
President and Chief Executive Officer

CLEVELAND CLINIC

EDUCATION INSTITUTE
 JAMES K. STOLLER, MD, MS
Chairman

PHILLIP R. GARD
Administrator

REPRINTS: Laurie Weiss 216-444-2661 E-mail ccjm@ccf.org

Cleveland Clinic Journal of Medicine [ISSN 0891-1150 (print), ISSN 1939-2869 (online)] is published monthly by Cleveland Clinic from editorial offices at 9500 Euclid Avenue, Cleveland, OH 44195. Periodicals postage paid at Cleveland, OH, and at additional mailing offices. POSTMASTER: Send address changes to the *Cleveland Clinic Journal of Medicine*, NA32, 9500 Euclid Avenue, Cleveland, OH 44195.

STATEMENTS AND OPINIONS expressed in the *Cleveland Clinic Journal of Medicine* are those of the authors and not necessarily of Cleveland Clinic or its Board of Trustees.

SUBSCRIPTION RATES: U.S. and possessions: personal \$115; institutional \$143; single copy/back issue \$20. Foreign: \$160; single copy/back issue \$20. Institutional (multiple-reader rate) applies to libraries, schools, hospitals, and federal, commercial, and private institutions and organizations. Individual subscriptions must be in the names of, billed to, and paid by individuals.

SUBSCRIPTIONS, EDITORIAL, BILLING/ACCOUNTING, AND PRODUCTION: (same address as above) • Phone (216) 444-2661 • Fax (216) 444-9385 • E-mail ccjm@ccf.org • Web site www.ccjm.org

ADVERTISING: Joseph Dennehy, Director, Sales and Marketing, 120 Castle Ridge Rd, Manhasset, NY 11030 • Phone (516) 365-8640 • Fax (516) 365-0587 • E-mail joedennehy@verizon.net

AUTHORIZATION TO PHOTOCOPY items for internal or personal use is granted by the *Cleveland Clinic Journal of Medicine* [ISSN 0891-1150 (print), ISSN 1939-2869 (online)], published by Cleveland Clinic, provided that the appropriate fee is paid directly to Copyright Clearance Center, 222 Rosewood Drive, Danvers, MA 01923 USA 978-750-8400. Prior to photocopying items for educational classroom use, please contact Copyright Clearance Center, Inc., at the address above. For permission to reprint material, please fax your request with complete information to the Republication department at CCC, fax (978) 750-4470. For further information visit CCC online at www.copyright.com. To order bulk reprints, see above.

DISCLAIMER: The information in this educational activity is provided for general medical education purposes only and is not meant to substitute for the independent medical judgment of a physician relative to diagnostic and treatment options of a specific patient's medical condition. The viewpoints expressed in this CME activity are those of the authors. They do not represent an endorsement by The Cleveland Clinic Foundation. In no event will The Cleveland Clinic Foundation be liable for any decision made or action taken in reliance upon the information provided through this CME activity.

COPYRIGHT © 2009 THE CLEVELAND CLINIC FOUNDATION. ALL RIGHTS RESERVED. PRINTED IN U.S.A.

CONTINUED FROM PAGE 492

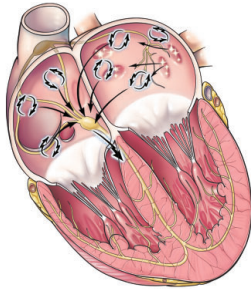
CME CREDIT CURRENT DRUG THERAPY 533

Beta-blockers for hypertension: Are they going out of style?

The outcomes of clinical trials have been disappointing, and the value of beta-blockers in treating hypertensive patients who do not have compelling indications for them has been questioned.

Q. CHE, M.J. SCHREIBER JR, AND M.A. RAFEY

CME CREDIT REVIEW 543



Ablation of atrial fibrillation: What can we tell our patients?

More patients are asking their physicians about radiofrequency ablation. Although it has shown promising clinical results, some patients may have unrealistic expectations.

P. CHOWDHURY, W.R. LEWIS, R.A. SCHWEIKERT, AND J.E. CUMMINGS

DEPARTMENTS 507

Letters to the Editor

A reader comments on the need to avoid unnecessary testing in medicine, as illustrated in an article about a man with uncontrolled diabetes (July 2009).

CME calendar **Inside back cover**

About our CME self-test online **551**

To receive CME credit, read the selected articles in this issue and then go online to take the test. It should take about 1 hour and 30 minutes to complete this activity. Release date: September 1, 2009. Expiration date: August 31, 2010.

SIGN UP FOR e-TOC ALERTS

To sign up for free e-mail Table of Contents alerts, go to *Cleveland Clinic Journal of Medicine's* home page (www.cjfm.org) and click on "ALERTS."

UPCOMING FEATURES

- Preventing toxicity from acetaminophen
- Update on swine-origin influenza A (H1N1)
- Better ways to assess high blood pressure
- Some cases of 'renal osteodystrophy' are just osteoporosis
- Issues in non-ST-elevation acute coronary syndromes
- Skin signs of liver disease
- All stones are not the same: Preventing and treating nephrolithiasis
- Autoimmune pancreatitis: A mimic of cancer

