

# TABLE OF CONTENTS

**FROM THE EDITOR** .....

**Out of Morpheus' embrace** 498

We still lack a full understanding of the complex physiology of sleep and the effects of sleep deprivation on a number of clinical conditions, from diabetes to fibromyalgia.

B.F. MANDELL

**EDITORIAL** .....

**Cardiovascular implantable electronic device infection: A complication of medical progress** 500

As more of these devices are placed in older and sicker patients, more infections can be expected.

N.K. SHRESTHA

**THE CLINICAL PICTURE** .....

**Electrocardiography in aortic regurgitation: It's in the details** 505

Although not routinely reported, a negative U wave indicates underlying structural or ischemic heart disease.

S. VENKATACHALAM AND C.M. RIMMERMAN

**REVIEW** .....

**New fecal occult blood tests may improve adherence and mortality rates** 515

A newer guaiac-based test and a variety of fecal immunochemical tests are more sensitive and more convenient than the older guaiac-based tests.

V. KUMARAVEL, S.P. HAYDEN, G.S. HALL, AND C.A. BURKE

**CME CREDIT** **IM BOARD REVIEW** .....

**A 49-year-old woman with a persistent cough** 521

She has a paroxysmal cough and posttussive chest pain and vomiting. What is the cause?

T.Y. DOLEH, S.J. REHM, AND J.H. ISAACSON

CONTINUED ON PAGE 494

# CLEVELAND CLINIC JOURNAL OF MEDICINE

## Online Features

Let us alert you to timely articles that appear in *Cleveland Clinic Journal of Medicine*

eTOCs is a free service that provides the Table of Contents or a notification of availability when new issues of *Cleveland Clinic Journal of Medicine* are published online

Sign up for *Cleveland Clinic Journal of Medicine* eTOCs (electronic Table of Contents)

To sign up, go to [www.ccmj.org](http://www.ccmj.org) and click on "E-MAIL ALERTS (FREE)"



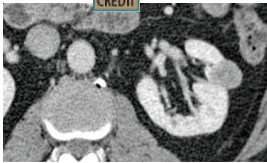
CONTINUED FROM PAGE 492

**CME CREDIT REVIEW** .....  
**Cardiovascular implantable electronic device infection: A stepwise approach to diagnosis and management** **529**

These complex infections pose challenges, as illustrated by a case scenario and a review of the key elements of diagnosis and management.

A.S. DABABNEH AND M.R. SOHAIL

**CME CREDIT REVIEW** .....  
**Small renal masses: Toward more rational treatment** **539**



Although surgical removal of the whole kidney has long been the most common treatment, nephron-sparing approaches are now favored.

A.A. THOMAS AND S.C. CAMPBELL

**CME CREDIT REVIEW** .....  
**Does lack of sleep cause diabetes?** **549**

Several lines of evidence indicate that chronic lack of sleep may contribute to the risk of type 2 diabetes mellitus.

C. TOUMA AND S. PANNAIN

**DEPARTMENTS** .....  
**Letters to the Editor** **512**

A reader comments on giant cell arteritis (April 2011).

**CME Calendar** **514**

**Directions for taking CME tests online** **559**

To receive CME credit, read any or all of the CME-certified articles in this issue (those that carry the CME logo), then go to [www.cjcm.org](http://www.cjcm.org) to take the test for the article or articles you select. It should take up to 1 hour to complete the activity for each article.

Release date: August 1, 2011  
 Expiration date: July 31, 2012

# UPCOMING FEATURES

- How long should bisphosphonates be taken?
- Bioidentical hormones: Clarifying the misconceptions
- Hepatic encephalopathy: Suspect it early in cirrhosis
- Intensive care update: Recent studies that have changed medical practice
- VTE: What to do after anticoagulation is started
- Sleep disorders from jet lag and shift work
- IgE blood tests for allergy: A practical guide
- Health care reform 101: From the medical home to accountable care organizations



DEDICATED TO LIFELONG LEARNING  
**CLEVELAND CLINIC JOURNAL OF MEDICINE**