

TABLE OF CONTENTS

FROM THE EDITOR

When to stop treating the bones **563**

Don't let the argument about how long to treat osteoporosis with bisphosphonate drugs stand in the way of initiating therapy in patients at risk of fracture.

B.F. MANDELL

MEDICAL GRAND ROUNDS

Accountable care organizations, the patient-centered medical home, and health care reform: What does it all mean? **571**

Central to fixing the broken US health care system are two concepts: the patient-centered medical home and accountable care organizations.

D.L. LONGWORTH

CME CREDIT REVIEW

Allergy blood testing: A practical guide for clinicians **585**

These tests can confirm the diagnosis of an allergic disorder, supplementing the clinical history. They are particularly useful when skin testing cannot or should not be done.

R.I. SILES AND F.H. HSIEH

THE CLINICAL PICTURE

Oral plaques and dysphagia in a young man **594**

A 23-year-old man presents with oral plaques, a sore throat, dysphagia, malaise, and weight loss. What is the most likely diagnosis?

A.S. TULLY AND C. DAO

CME CREDIT REVIEW

Hepatic encephalopathy: Suspect it early in patients with cirrhosis **597**

Prompt identification and treatment are essential, since the prognosis worsens rapidly once overt encephalopathy develops.

J. WAKIM-FLEMING

CONTINUED ON PAGE 568

CLEVELAND CLINIC JOURNAL OF MEDICINE

Online Features

Let us alert you to timely articles that appear in *Cleveland Clinic Journal of Medicine*

eTOCs is a free service that provides the Table of Contents or a notification of availability when new issues of *Cleveland Clinic Journal of Medicine* are published online

Sign up for *Cleveland Clinic Journal of Medicine* eTOCs (electronic Table of Contents)

To sign up, go to www.ccm.org and click on "E-MAIL ALERTS (FREE)"



CONTINUED FROM PAGE 564

THE CLINICAL PICTURE.....

Unmasking gastric cancer 606

Screening with diagnostic imaging may be justified in high-risk groups, although the issue is debatable.

F. ALTAHAWI, A.H. ALRAIYES, AND M.C. ALRAIES

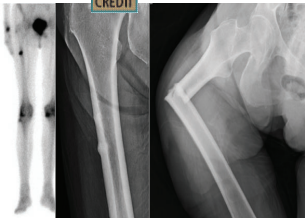
CME CREDIT REVIEW.....

Venous thromboembolism: What to do after anticoagulation is started 609

Three issues need to be addressed: the length of therapy, measures to prevent postthrombotic syndrome, and a basic workup for possible underlying malignancy.

S. KAATZ, W. QURESHI, AND R.C. LAVENDER

CME CREDIT CURRENT DRUG THERAPY.....



What is the optimal duration of bisphosphonate therapy? 619

It is reasonable to stop bisphosphonates after 5 years of use and then to follow patients with markers of bone turnover.

S.M. OTT

DEPARTMENTS.....

CME Calendar 584

Directions for taking CME tests online 631

To receive CME credit, read any or all of the CME-certified articles in this issue (those that carry the CME logo), then go to www.ccjm.org to take the test for the article or articles you select. It should take up to 1 hour to complete the activity for each article.

Release date: September 1, 2011

Expiration date: August 31, 2012

UPCOMING FEATURES

■ **Dabigatran (Pradaxa)**
Will it change clinical practice?

■ **Bioidentical hormones:**
Clarifying misconceptions

■ **Intensive care update:**
Recent studies

■ **Acute aortic dissection:**
Recognizing a serious diagnosis

■ **When sleep is**
out of sync with the sun

■ **Recognizing, addressing**
racial disparities in health care

■ **HPV testing:**
Improving on the success of the Pap test

■ **Nocturia in the elderly:**
A wake-up call

