

TABLE OF CONTENTS

FROM THE EDITOR

Home testing: The metamorphosis of attitudes about HIV infection **669**

Most of us have not spent the past 25 years on the front line against the AIDS epidemic, but we all have been touched by it.

B.F. MANDELL

THE CLINICAL PICTURE.....

V₁: The most important lead in inferior STEMI **682**

A 63-year-old woman with diabetes and hypertension developed chest tightness. Her electrocardiogram showed ST-segment elevation in leads II, III, aVF, V₁, and V₂.

V. NAGARAJAN AND D.A. UNDERWOOD

THE CLINICAL PICTURE.....

A 60-year-old man with abdominal bruising **688**

A man with liver cancer developed abdominal ecchymoses resembling the Cullen sign and flank ecchymoses resembling the Grey Turner sign.

D. DALAL AND S.E. MACE

IM BOARD REVIEW.....

Chronic lymphocytic leukemia and apparent hyperkalemia **690**

The day after chemotherapy, the patient's plasma potassium level was 7.7 mmol/L and the next day it rose to 10.9, but he had no signs or symptoms of hyperkalemia. What was the cause?

A. GEORGE, O. PANDEY, AND A. MORENO

REVIEW

Hypertension in the elderly: Some practical considerations **694**

Treatment is challenging because of comorbidities and age-related changes. Some common scenarios are presented.

K.N. CHAUDHRY, P. CHAVEZ, J. GASOWSKI, T. GRODZICKI, AND F.H. MESSERLI

CONTINUED ON PAGE 670

CLEVELAND CLINIC JOURNAL OF MEDICINE

Online Features

Free e-mail alerts

To receive your free e-mail Table of Contents (eTOC) when a new issue of the *Cleveland Clinic Journal of Medicine* is released, just click on "Alerts" from any page at www.ccmj.org.

It is quick and easy. All you need is your e-mail address. No other registration information is required.

Social Networking

To post a *CCJM* article to Facebook or your favorite social networking site, just click on the icon at the bottom of any online article.



CONTINUED FROM PAGE 668

CME CREDIT REVIEW
Cognitive impairment in ICU survivors: Assessment and therapy 705

Cognitive impairment occurs in up to one-third of patients after a stay in the intensive care unit. Prevention is the prevailing strategy, since data on treatment are scarce.

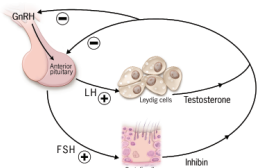
R. WERGIN AND A. MODRYKAMIEN

CME CREDIT REVIEW
Home testing for HIV: Hopefully, a step forward 713

An over-the-counter at-home test has been approved. Will it lower the number of infected people unaware of their infection?

C.E. KOVAL

CME CREDIT REVIEW
Male hypogonadism: More than just a low testosterone 717



Confronted with a low serum testosterone level, physicians should not jump to the diagnosis of hypogonadism. Confirmation and thorough evaluation are warranted.

K.M. PANTALONE AND C. FAIMAN

CME CREDIT ADDRESSING DISPARITIES IN HEALTH CARE
Hypertensive chronic kidney disease in African Americans: Strategies for improving care 726

Factors responsible for its rapid progression in African Americans are detectable by screening and modifiable with prompt therapy.

D. MARTINS, L. AGODOA, AND K.C. NORRIS

DEPARTMENTS
CME Calendar 681

Directions for taking CME tests online 735

To receive CME credit, read any or all of the CME-certified articles in this issue (those that carry the CME logo), then go to www.ccmj.org to take the test for the article or articles you select. It should take up to 1 hour to complete the activity for each article. Release date: October 1, 2012
 Expiration date: September 30, 2013

UPCOMING FEATURES

- **Statins and diabetes risk: Fact, fiction, and clinical implications**
- **Testosterone replacement: Indications and pitfalls**
- **Mild cognitive impairment: Hope for stability, plan for progression**
- **The adult Asperger patient in your waiting room**
- **Emergency contraception: Clarifying the myths**
- **Hereditary colorectal cancer: Recognizing and managing these syndromes in your practice**
- **Diabetes and the kidney 2012**

