

# TABLE OF CONTENTS

**FROM THE EDITOR** .....

**Examine before ordering:  
An algorithm unchanged by new tests** **234**

I have always been irked when doctors reflexively order panels of immunologic tests when evaluating patients with “arthritis.”

B.F. MANDELL

**1-MINUTE CONSULT** .....

**Should I order an anti-CCP antibody test  
to diagnose rheumatoid arthritis?** **249**

This test is highly specific, though it may be redundant for a patient who has documented rheumatoid arthritis and who is seropositive for rheumatoid factor.

N. BOSE AND L.H. CALABRESE

**THE CLINICAL PICTURE**.....

**Purpuric lesion on the elbow** **253**

A 75-year-old man developed a painful lesion on the elbow several days after starting warfarin therapy. What is the most likely diagnosis?

N.K. VOORE, A. RAHMAN, S. SANNA, AND H. BAHRAIN

**THE CLINICAL PICTURE**.....

**Purple urine in a woman  
with chronic kidney disease** **255**

Although purple urine itself is usually considered benign, it should prompt an evaluation for urinary tract infection.

Y.-C. CHEN



**REVIEW** .....

**Synthetic legal intoxicating drugs:  
The ‘incense’ and ‘bath salt’ phenomenon** **258**

These products are gaining in popularity among drug abusers, because they are cheap and produce a powerful high. They may not be detectable on standard urine drug screening.

J. JERRY, G. COLLINS, AND D. STREEM

CONTINUED ON PAGE 231

# CLEVELAND CLINIC JOURNAL OF MEDICINE

## Online Features

### Free e-mail alerts

To receive your free e-mail Table of Contents (eTOC) when a new issue of the *Cleveland Clinic Journal of Medicine* is released, just click on “Alerts” from any page at [www.ccm.org](http://www.ccm.org).

It is quick and easy. All you need is your e-mail address. No other registration information is required.

### Social Networking

To post a *CCJM* article to Facebook or your favorite social networking site, just click on the icon at the bottom of any online article.



# UPCOMING FEATURES

- **CT screening for lung cancer: How to do it rationally**
- **Acute community-acquired bacterial meningitis in adults**
- **Disparities in prostate cancer in African American men: What you can do**
- **Family history: A useful tool in personalized care**
- **Avoiding UV damage: Sunscreens and smoke screens**
- **Dengue fever: A reemerging concern among travelers**
- **Advanced heart failure: Present and future**



DEDICATED TO LIFELONG LEARNING  
**CLEVELAND CLINIC JOURNAL OF MEDICINE**

CONTINUED FROM PAGE 228

REVIEW ..... 265

**Factor V Leiden: How great is the risk of venous thromboembolism?** 265



The risk of a first episode of thromboembolism is two to five times higher with the heterozygous factor V Leiden mutation, but the absolute risk is still low.

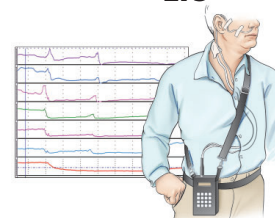
K. SHAHEEN, M.C. ALRAIES, A.H. ALRAIYES, AND R. CHRISTIE

REVIEW ..... 273

**Antireflux surgery in the proton pump inhibitor era** 273



Although drug therapy with a proton pump inhibitor is the first-line treatment for gastroesophageal reflux disease, surgery still has several specific indications.



W.J. BULSIEWICZ AND R.D. MADANICK

THE CLINICAL PICTURE ..... 282

**A nodule on a woman's face** 282

It is firm, pink, 10 mm in diameter, with surrounding telangiectasias. What is it?

S. ARIAS-SANTIAGO, J. ANEIROS-FERNÁNDEZ, A. CUTANDO, A. BUENDÍA-EISMAN, R. NARANJO-SINTES, A. CAMPOS, AND M. ALAMINOS-MINGORANCE

REVIEW ..... 285

**Nonallergic rhinitis: Common problem, chronic symptoms** 285



Allergic and nonallergic rhinitis have similar symptoms, but their mechanisms and treatment differ.

B. SCHROER AND L.C. PIEN

DEPARTMENTS ..... 236

**Letters to the Editor** 236

Readers comment on previous articles about glucocorticoid-induced diabetes and adrenal failure (November 2011), essential tremor (December 2011), and Parkinson disease (January 2012).

**CME Calendar** 257

**Directions for taking CME tests online** 294

To receive CME credit, read any or all of the CME-certified articles in this issue (those that carry the CME logo), then go to [www.ccjm.org](http://www.ccjm.org) to take the test for the article or articles you select. It should take up to 1 hour to complete the activity for each article. Release date: April 1, 2012. Expiration date: March 31, 2013