



EDUCATIONAL OBJECTIVE: Readers will discuss the options for revascularization with their patients in advance of angiography

BHUVNESH AGGARWAL, MD
Department of Internal Medicine,
Cleveland Clinic

SACHIN S. GOEL, MD
Cardiovascular Medicine,
Heart and Vascular Institute,
Cleveland Clinic

JOSEPH F. SABIK, MD
Chair, Department of Thoracic and Cardiovascular Surgery; Staff, Critical Care Center, Heart and Vascular Institute, Cleveland Clinic; and Professor, Cleveland Clinic Lerner College of Medicine of Case Western Reserve University, Cleveland, OH

MEHDI H. SHISHEHBOR, DO, MPH, PhD
Director, Endovascular Services, Interventional Cardiology and Vascular Medicine, Heart and Vascular Institute, Cleveland Clinic

The FREEDOM trial: In appropriate patients with diabetes and multivessel coronary artery disease, CABG beats PCI

ABSTRACT

The Future Revascularization Evaluation in Patients With Diabetes Mellitus: Optimal Management of Multivessel Disease (FREEDOM) trial (N Engl J Med 2012; 367:2375–2384) was designed to resolve the long-standing debate over the optimal revascularization strategy in patients with diabetes mellitus and multivessel coronary artery disease. At a median follow-up of 3.8 years, the incidence of the primary outcome (a composite of death, myocardial infarction, and stroke) was significantly lower with bypass surgery than with percutaneous intervention.

KEY POINTS

Patients with diabetes have a higher prevalence of multivessel coronary artery disease and often have complex, diffuse lesions.

Bypass surgery is the preferred method of revascularization in appropriately selected patients with diabetes and multivessel coronary artery disease.

In the FREEDOM trial, only about 10% of the screened patients were eligible for the study, limiting its generalizability; however, this is comparable to exclusion rates in previous large randomized trials.

When choosing a revascularization method, the physician team needs to discuss the options with the patient before performing diagnostic angiography. The team should include a cardiac surgeon and a cardiologist.

MANY PATIENTS WITH DIABETES MELLITUS develop complex, accelerated, multifocal coronary artery disease. Moreover, if they undergo revascularization with either coronary artery bypass grafting (CABG) or percutaneous coronary intervention (PCI), their risk of morbidity and death afterward is higher than in those without diabetes.^{1,2}

Over the last 2 decades, CABG and PCI have advanced significantly, as have anti-thrombotic therapy and drug therapies to modify cardiovascular risk factors such as hyperlipidemia, hypertension, and diabetes.

Several earlier studies showed CABG to be more beneficial than PCI in diabetic patients with multivessel coronary artery disease.^{3–5} However, the topic has been controversial, and a substantial proportion of these patients continue to undergo PCI rather than CABG.

There are two main reasons for the continued use of PCI in this population. First, PCI is evolving, with new adjuvant drugs and drug-eluting stents. Many cardiologists believe that earlier trials, which did not use contemporary PCI techniques, are outdated and that current, state-of-the-art PCI may be equivalent to—if not superior to—CABG.

Second, PCI is often performed on an ad hoc basis immediately after diagnostic angiography, leaving little time for discussion with the patient about alternative treatments. In this scenario, patients are inclined to undergo PCI immediately, while they are already on the table in the catheterization suite, rather than CABG at a later date.⁶

In addition, although the current joint guide-

doi:10.3949/ccjm.80a.13030

lines of the American College of Cardiology and the American Heart Association state that CABG is preferable to PCI for patients with diabetes and multivessel coronary artery disease, they give it only a level IIa recommendation.⁷

The much-anticipated Future Revascularization Evaluation in Patients With Diabetes Mellitus: Optimal Management of Multivessel Disease (FREEDOM) trial⁸ was designed to settle the CABG-vs-PCI debate, thereby leading to a stronger guideline recommendation for the preferred revascularization strategy in this patient population.

■ WHY ARE DIABETIC PATIENTS DIFFERENT?

Diabetes mellitus is a major risk factor for premature and aggressive coronary artery disease. Several mechanisms have been proposed to explain this association.

Diabetic patients have higher concentrations of several inflammatory proteins than those without diabetes, including C-reactive protein, tumor necrosis factor, and platelet-derived soluble CD40 ligand. They also have higher levels of adhesion molecules such as vascular cell adhesion molecule-1 and intercellular adhesion molecule.^{9,10} In addition, when blood sugar levels are high, platelets express more glycoprotein IIb/IIIa receptors and are therefore more prone to aggregate.¹¹

These prothrombotic and proinflammatory cytokines, in conjunction with endothelial dysfunction and metabolic disorders such as hyperglycemia, hyperlipidemia, obesity, insulin resistance, and oxidative stress, lead to accelerated atherosclerosis in patients with diabetes.¹² Also, because diabetes is a systemic disease, the atherosclerotic process is diffuse, and many patients with diabetes have left main coronary artery lesions and diffuse multivessel coronary artery disease.^{13,14}

Although the short-term outcomes of revascularization by any means are comparable in patients with and without diabetes, diabetic patients have lower long-term survival rates and higher rates of myocardial infarction and need for repeat procedures.¹⁵ Diabetic patients who undergo PCI have a high rate of stent thrombosis and restenosis.^{16,17} Similarly, those undergoing CABG have higher rates of post-

operative infection and renal and neurologic complications.^{18,19}

■ BEFORE THE FREEDOM TRIAL

The question of CABG vs PCI has plagued physicians ever since PCI came to the forefront in the 1980s. Before stents were widely used, PCI with balloon angioplasty was known to be comparable to CABG for single-vessel disease, but whether it was beneficial in patients with multivessel disease or left main disease was not entirely evident. Randomized clinical trials were launched to answer the question.

Studies of balloon angioplasty vs CABG

The BARI trial (Bypass Angioplasty Revascularization Investigation),^{5,20} published in 1996, compared PCI (using balloon angioplasty without a stent) and CABG in patients with multivessel coronary artery disease (TABLE 1²⁰⁻²⁹).

Between 1988 and 1991, the trial randomly assigned 1,829 patients with multivessel disease to receive either PCI or CABG and compared their long-term outcomes. Although there was no difference in mortality rates between the two groups overall, the diabetic subgroup had a significantly better survival rate with CABG than with PCI, which was sustained over a follow-up period of 10 years.⁵

BARI had a significant clinical impact at the time and led to a clinical alert by the National Heart, Lung, and Blood Institute recommending CABG over PCI for patients with diabetes. However, not everyone accepted the results, because they were based on a small number of patients (n = 353) in a retrospectively determined subgroup. Further, the BARI trial was conducted before the advent of coronary stents, which were later shown to improve outcomes after PCI. Also, optimal medical therapy after revascularization was not specified in the protocol, which likely affected outcomes.

EAST (Emory Angioplasty Versus Surgery Trial)²¹ and CABRI (Coronary Angioplasty Versus Bypass Revascularization Investigation)²² were similar randomized trials comparing angioplasty and CABG in patients with multivessel coronary artery disease. These showed better outcomes after CABG in patients with diabetes. However, lack of statisti-

FREEDOM was designed to settle the CABG-vs-PCI debate, thereby leading to a stronger guideline recommendation

TABLE 1

Major randomized trials comparing PCI and CABG in diabetic patients

Trial ^a	Study population	Diabetic subgroup	Follow-up	PCI method	Mortality rates	Repeat revascularization rates	Comments
EAST , ²¹ 1994	Multivessel CAD; LVEF > 25%	CABG 41 PCI 49	8 Years	PTCA	CABG 24.5% PCI 39.9%	NA	Single center No stents used
CABRI , ²² 1995	Multivessel CAD; LVEF > 35%	CABG 62 PCI 63	4 Years	PTCA	CABG 12.5% PCI 22.6%	NA	Rare stent use
BARI , ^{5,20} 1996	Multivessel CAD	CABG 180 PCI 173	10 Years	PTCA	CABG 42.1% PCI 54.5%*	CABG 18.3% PTCA 79.7% ^b	81% IMA use No GP IIb/IIIa inhibitor use
ARTS , ²³ 2001	Multivessel CAD; LVEF > 30%	CABG 96 PCI 112	5 Years	BMS 97%	CABG 8.3% PCI 13.4%	CABG 27.5% PCI 42.9% ^b (At 1 year)	89% IMA use 97% BMS use 3.5% GP IIb/IIIa inhibitor use
SoS , ²⁴ 2002	Multivessel CAD	CABG 74 PCI 68	6 Years	BMS 97%	CABG 5.4% PCI 17.6%	CABG 5.4% PCI 25.0% (At 2 years)	81% IMA use 8% GP IIb/IIIa inhibitor use
ERACI II , ²⁵ 2001	Multivessel CAD	CABG 39 PCI 39	5 Years	BMS 89%	CABG 10.0% PCI 10.2%	NA	93% IMA use 50% of CABG deaths were within 30 days, unlike PCI
SYNTAX , ^{26,27} 2009	Three-vessel or left main CAD	CABG 221 PCI 231	5 Years	DES 100%	CABG 12.9% PCI 19.5%	CABG 14.6% PCI 35.3% ^b	97% IMA use Study not powered to detect difference in diabetic patients
CARDia , ⁴ 2010	Multivessel or complex single-vessel CAD	CABG 254 PCI 256	5 Years	BMS 31% DES 69%	CABG 14.0% PCI 12.6% (At 5 years)	CABG 8.3% PCI 21.9% ^b	97% IMA use Short follow-up Failed to reject "inferiority" of PCI
FREEDOM , ⁸ 2012	Multivessel CAD	CABG 947 PCI 953	5 Years	DES 100%	CABG 10.9% PCI 16.3%*	CABG 4.8% PCI 12.6% ^b (At 1 year)	Large sample size 94% IMA use Optimal medical therapy
VA-CARDS , ^{28,29} 2013	Proximal LAD or multivessel CAD	CABG 97 PCI 101	2 Years	DES 99%	CABG 5% PCI 21%	CABG 31% PCI 26%	Study stopped after recruitment of 25% of intended sample size

^aSee text for full study names

^bStatistically significant ($P < .05$)

BMS = bare metal stent; CABG = coronary artery bypass grafting; CAD = coronary artery disease; DES = drug-eluting stent; GP = glycoprotein; IMA = internal mammary artery; LAD = left anterior descending artery; LVEF = left ventricular ejection fraction; NA = not available; PCI = percutaneous coronary intervention; PTCA = percutaneous transluminal coronary angioplasty (ie, balloon angioplasty)

cal significance because of small sample sizes limited their clinical impact.

Studies of PCI with bare-metal stents vs CABG

The ARTS trial (Arterial Revascularization Therapy Study) compared PCI (with bare-metal stents) and CABG in 1,205 patients with multivessel coronary artery disease.²³ The mortality rate did not differ significantly between two treatment groups overall or in the diabetic subgroup. However, the repeat revascularization rate was higher with PCI than with CABG.

The SoS trial (Stenting or Surgery)²⁴ had similar results.

The ERACI II trial (Argentine Randomized Study: Coronary Angioplasty With Stenting Versus Coronary Bypass Surgery in Multi-Vessel Disease)²⁵ found no difference in mortality rates at 5 years with CABG vs PCI.

These trials were criticized, as none of them routinely used glycoprotein IIb/IIIa inhibitors with PCI, which by then had been shown to reduce mortality rates.³⁰ However, these trials made it clear that restenosis requiring repeat revascularization was a major disadvantage of PCI with bare-metal stents compared with CABG in patients with diabetes. Drug-eluting stents, which significantly reduced the rates of in-stent restenosis and target-lesion revascularization, were expected to overcome this major disadvantage.

Studies of PCI with drug-eluting stents vs CABG

ARTS II was the first trial to compare PCI with drug-eluting stents vs CABG. This was a nonrandomized single-arm study of 607 patients (including 159 with diabetes) who were treated with drug-eluting stents; the outcomes were compared with the CABG group from the earlier ARTS trial.³¹

At 3 years, in the diabetic subgroup, the rates of death, myocardial infarction, and stroke were not significantly different between treatments, although a trend favored PCI. However, this comparison was limited by selection bias, as ARTS II was a nonrandomized trial in which operators chose patients for drug-eluting stents in an attempt to match already known outcomes from the CABG co-

hort of ARTS.

SYNTAX (Synergy Between PCI With Taxus and Cardiac Surgery) was the first randomized trial comparing PCI with drug-eluting stents (in this trial, paclitaxel-eluting) vs CABG in patients with three-vessel or left main coronary artery disease.^{26,27} Subgroup analysis in patients with diabetes mellitus revealed a higher rate of major adverse cardiac and cerebrovascular events (death, myocardial infarction, stroke, or repeat revascularization) in the PCI group than in the CABG patients, largely driven by higher rates of repeat revascularization after PCI.^{32,33} SYNTAX was not designed to assess significant differences in rates of death.

The CARDIa trial (Coronary Artery Revascularization in Diabetes) randomized patients with diabetes and multivessel coronary artery disease to PCI (about one-third with bare-metal stents and two-thirds with drug-eluting stents) or CABG. Rates of major adverse cardiac and cerebrovascular events were higher in the PCI group, again largely driven by higher rates of repeat revascularization.⁴ CARDIa was stopped early because of a lack of enrollment and could not provide sufficient evidence to endorse one strategy over the other.

VA-CARDS (Veteran Affairs Coronary Artery Revascularization in Diabetes) randomized patients with diabetes and proximal left anterior descending artery or multivessel coronary artery disease to receive PCI with drug-eluting stents or CABG.²⁸ Although the rate of death was lower with CABG than with PCI at 2 years, the trial was underpowered and was terminated at 25% of the initial intended patient enrollment. In addition, only 9% of diabetic patients screened were angiographically eligible for the study.²⁹

Registry data. Analysis of a large data set from the National Cardiovascular Disease Registry and the Society of Thoracic Surgeons revealed a survival advantage of CABG over PCI for a follow-up period of 5 years.³⁴ However, this was a nonrandomized study, so its conclusions were not definitive.

THE FREEDOM TRIAL

Given the limitations of the trials described above, the National Heart, Lung, and Blood

Not everyone accepted the BARI results, since they were based on a small number of patients in a retrospectively determined subgroup

Institute sponsored the FREEDOM trial—an appropriately powered, randomized comparison of PCI (with drug-eluting stents) and CABG (using arterial grafting) in patients with diabetes and multivessel coronary artery disease using contemporary techniques and concomitant optimal medical therapy.⁸

FREEDOM study design

The FREEDOM trial enrolled 1,900 patients with diabetes and angiographically confirmed multivessel coronary artery disease (83% with three-vessel disease) with stenosis of more than 70% in two or more major epicardial vessels involving at least two separate coronary-artery territories. The main exclusion criteria were severe left main coronary artery stenosis (≥ 50% stenosis), class III or IV congestive heart failure, and previous CABG or valve surgery. For CABG surgery, arterial revascularization was encouraged.

Dual antiplatelet therapy was recommended for at least 12 months in patients receiving a drug-eluting stent, and optimal medical management for diabetes, hypertension, and hyperlipidemia was strongly advocated.

Between April 2005 and April 2010, 32,966 patients were screened, of whom 3,309 were eligible for the trial and 1,900 consented and were randomized (953 to the PCI group and 947 to the CABG group). The patients were followed for a minimum of 2 years and had a median follow-up time of 3.8 years. Outcomes were measured with an intention-to-treat analysis.

Study results

Patients. The groups were comparable with regard to baseline demographics and cardiac risk factors.

The mean age was 63; 29% of the patients were women, and 83% had three-vessel coronary artery disease. The mean hemoglobin A_{1c} was 7.8%, and the mean ejection fraction was 66%. The mean SYNTAX score, which defines the anatomic complexity of lesions, was 26 (≤ 22 is mild, 23–32 is intermediate, and ≥ 33 is high). The mean EURO score, which defines surgical risk, was 2.7 (a score ≥ 5 being associated with a lower rate of survival).

The primary composite outcome (death, nonfatal myocardial infarction, or nonfatal

TABLE 2

Outcomes in the FREEDOM trial

Outcome	2 years after randomization		5 years after randomization		P value
	PCI	CABG	PCI	CABG	
Primary composite	13.0%	11.9%	26.6%	18.7%	.005
Death from any cause	6.7%	6.3%	16.3%	10.9%	.049
Myocardial infarction	6.7%	4.7%	13.9%	6.0%	< .001
Stroke	1.5%	2.7%	2.4%	5.2%	.03
Cardiovascular death	0.9%	1.3%	10.9%	6.8%	.12

FROM FARKOUH ME, DOMANSKI M, SLEEPER LA, ET AL. STRATEGIES FOR MULTIVESSEL REVASCULARIZATION IN PATIENTS WITH DIABETES. N ENGL J MED 2012; 367:2375–2384. REPRINTED WITH PERMISSION FROM THE MASSACHUSETTS MEDICAL SOCIETY.

stroke) occurred less frequently in the CABG group than in the PCI group (TABLE 2). CABG was also associated with significantly lower rates of death from any cause and of myocardial infarction. Importantly, survival curves comparing the two groups diverged at 2-year follow-up. In contrast to other outcomes assessed, stroke occurred more often in the CABG group. The 5-year rates in the CABG group vs the PCI group were:

- Primary outcome—18.7% vs 26.6%, *P* = .005
- Death from any cause—10.9% vs 16.3%, *P* = .049
- Myocardial infarction—6% vs 13.9%, *P* < .0001
- Stroke—5.2% vs 2.4%, *P* = .03.

The secondary outcome (death, nonfatal myocardial infarction, nonfatal stroke, or repeat revascularization at 30 days or 12 months) had occurred significantly more often in the PCI group than in the CABG group at 1 year (16.8% vs 11.8%, *P* = .004), with most of the difference attributable to a higher repeat revascularization rate in the PCI group (12.6% vs 4.8%, *P* < .001).

Subgroup analysis. CABG was superior to PCI across all prespecified subgroups, covering the complexity of the coronary artery disease. Event rates with CABG vs PCI, by tertiles of the SYNTAX score:

- SYNTAX scores ≤ 22: 17.2% vs 23.2%
- SYNTAX scores 23–32: 17.7% vs 27.2%

5-year mortality rates in FREEDOM: 10.9% with CABG, 16.3% with PCI

- SYNTAX scores ≥ 33 : 22.8% vs 30.6%.

Cost-effectiveness. Although up-front costs were higher with CABG, at \$34,467 for the index hospitalization vs \$25,845 for PCI ($P < .001$), when the in-trial results were extended to a lifetime horizon, CABG had an incremental cost-effectiveness ratio of \$8,132 per quality-adjusted life-year gained vs PCI.³⁵ Traditionally, therapies are considered cost-effective if the incremental cost-effectiveness ratio is less than \$50,000 per quality-adjusted life-year gained.

■ WHY MAY CABG BE SUPERIOR IN DIABETIC PATIENTS?

The major advantage of CABG over PCI is the ability to achieve complete revascularization. Diabetic patients with coronary artery disease tend to have diffuse, multifocal disease with several stenotic lesions in multiple coronary arteries. While stents only treat the focal area of most significant occlusion, CABG may bypass all proximal vulnerable plaques that could potentially develop into culprit lesions over time, truly bypassing the diseased segments (FIGURE 1).

In addition, heavy calcification may not allow optimal stenting in these patients.

Use of multiple stents increases the risk of restenosis, which could lead to a higher incidence of myocardial infarction and need for repeat revascularization. This was evident in the FREEDOM trial, in which the mean number of stents per patient was 4.2. Also, some lesions need to be left untreated because of the complexity involved.

The major improvement in outcomes after CABG has resulted from using arterial conduits such as the internal mammary artery rather than the saphenous vein.³⁶ The patency rates of internal mammary artery grafts exceed 80% over 10 years.³⁷ Internal mammary artery grafting was done in 94% of patients receiving CABG in the FREEDOM trial.

■ WHAT DOES THIS MEAN?

FREEDOM was a landmark trial that confirmed that CABG provides significant benefit compared with contemporary PCI with drug-eluting stents in patients with diabetes

mellitus and multivessel coronary artery disease. It was a large multicenter trial that was adequately powered, unlike most of the earlier trials of this topic.

Unlike previous trials in which the benefit of CABG was driven by reduction in repeat revascularizations alone, FREEDOM showed lower incidence rates of all-cause mortality and myocardial infarction with CABG than with PCI. CABG was better regardless of SYNTAX score, number of diseased vessels, ejection fraction, race, or sex of the patient, indicating that it leads to superior outcomes across a wide spectrum of patients.

An argument that cardiologists often cite when recommending PCI is that it can save money due to lower length of index hospital stay and lower procedure costs of with PCI than with CABG. However, in FREEDOM, CABG also appeared to be highly cost-effective.

FREEDOM had limitations

While FREEDOM provided robust data proving the superiority of CABG, the study had several limitations.

Although there was an overall survival benefit with CABG compared with PCI, the difference in incidence of cardiovascular deaths (which accounted for 64% of all deaths) was not statistically significant.

The trial included only patients who were eligible for both PCI and CABG. Hence, the results may not be generalizable to all diabetic patients with multivessel coronary artery disease—indeed, only 10% of those screened were considered eligible for the trial. However, it is likely that several patients screened in the FREEDOM trial may not have been eligible for PCI or CABG at the time of screening, since the revascularization decision was made by a multidisciplinary team and a more appropriate decision (either CABG or PCI) was then made.

Other factors limiting the general applicability of the results were low numbers of female patients (28.6%), black patients (6.3%), patients with an ejection fraction of 40% or less (2.5%), and patients with a low SYNTAX score (35%).

There were several unexplained observations as well. The difference in events between the treatment groups was much higher in North America than in other regions. The

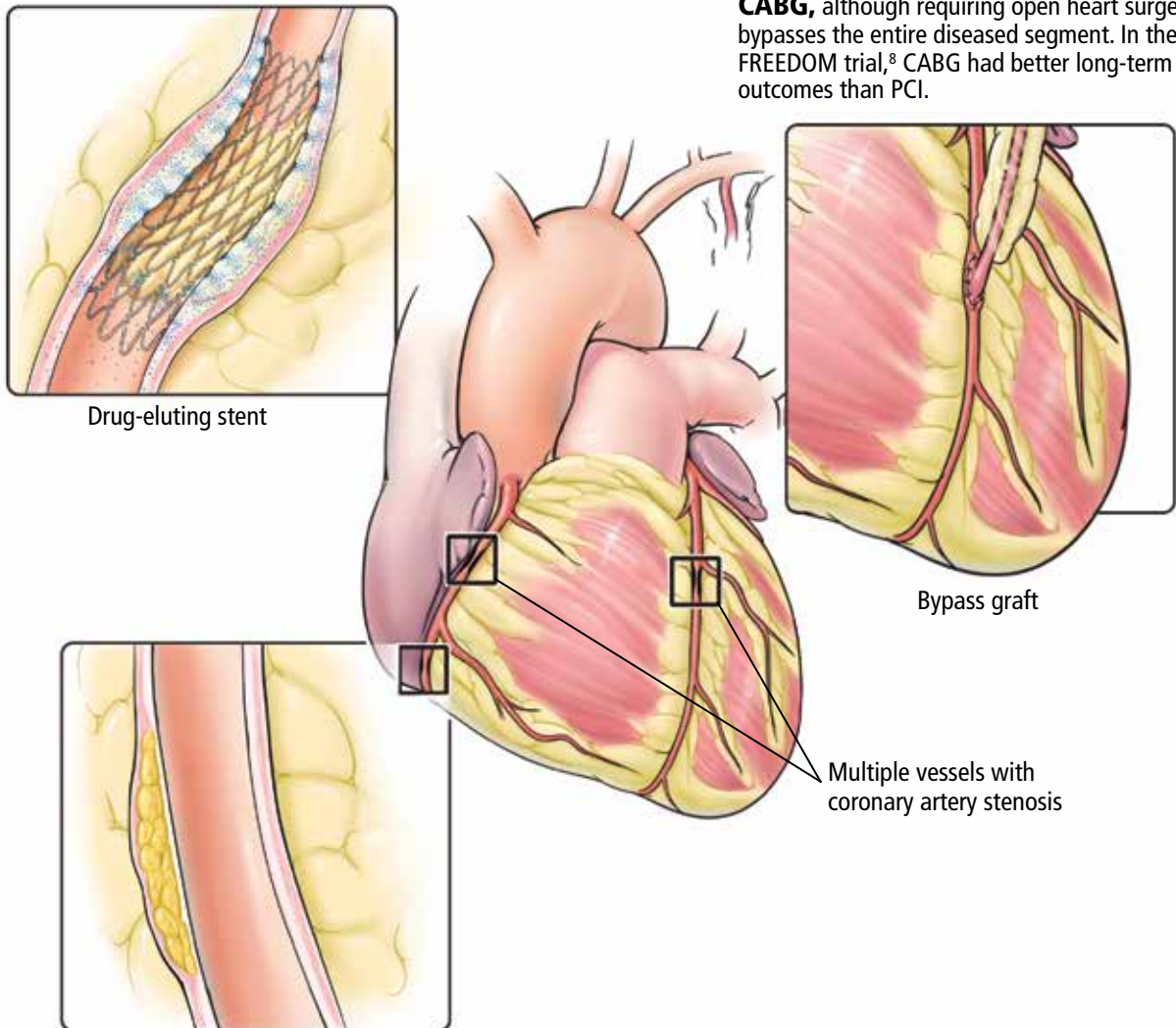
The major advantage of CABG over PCI is the ability to achieve complete revascularization

■ PCI vs CABG in diabetic patients with multivessel coronary artery disease

Patients with diabetes are likely to develop diffuse, multivessel coronary artery disease. For these patients, which is the optimal revascularization strategy: percutaneous coronary intervention (PCI) or coronary artery bypass grafting (CABG)?

PCI is less invasive but addresses only discrete lesions, so patients are prone to need repeat procedures later as new stenoses develop or when vulnerable plaques rupture, causing thrombosis and acute coronary syndromes.

CABG, although requiring open heart surgery, bypasses the entire diseased segment. In the FREEDOM trial,⁸ CABG had better long-term outcomes than PCI.



Vulnerable plaque may not be noticeable on angiography and is not treated during PCI.

CCF
Medical Illustrator: Joseph Pangrace ©2013

FIGURE 1

number of coronary lesions in the CABG group was high (mean = 5.74), but the average numbers of grafts used was only 2.9, and data were not provided regarding use of sequential grafting. Similarly, an average of only 3.5 of the six stenotic lesions per patient in the PCI group were revascularized; whether this was the result of procedural limitations with PCI was not entirely clear.

In addition, while the investigators mention that an average patient received four stents, a surprising finding was that the mean total length of the stents used was only 26 mm. This appears too small, as the usual length of one drug-eluting stent is about 20 to 30 mm.

Since only high-volume centers with good outcome data were included in the trial, the results may lack validity for patients undergoing revascularization at low-volume community centers.

It remains to be seen if the benefits of CABG will be sustained over 10 years and longer, when saphenous vein grafts tend to fail and require repeat revascularization, commonly performed with PCI. Previous data suggest that the longer the follow-up, the better the results with CABG. However, long-term results (> 10 years) in studies comparing drug-eluting stents and CABG are not available.

Despite limitations, FREEDOM may change clinical practice

Despite these limitations, the FREEDOM trial has the potential to change clinical practice and strengthen current recommendations for CABG in these patients.

The trial underscored the importance of a multidisciplinary heart team approach in managing patients with complex coronary artery disease, similar to that being used in patients with severe aortic stenosis since transcatheter aortic valve replacement became available.

It should also bring an end to the practice of ad hoc PCI, especially in patients with diabetes and multivessel coronary artery disease. It is now imperative that physicians discuss current evidence for therapeutic options with the patients and their families *before* performing diagnostic angiography rather than immediately afterward, to give the patients ample time to make an informed decision. This

is important, as most patients are likely to choose PCI in the same setting over CABG unless there is extensive discussion about the risks and benefits of both strategies done in an unbiased manner before angiography.

The fear of open heart surgery, a longer hospital stay, and a higher risk of stroke with CABG may lead some patients to choose PCI instead. In addition, factors that may preclude CABG in otherwise-eligible patients include anatomic considerations (diffuse distal vessel disease, poor conduits), individual factors (frailty, poor renal function, poor pulmonary function, patient preference), and local expertise.

Nevertheless, the patient should be presented with current evidence, and discussions regarding the optimal procedure should be held with a heart team, which should include an interventional cardiologist, a cardiothoracic surgeon, and a noninvasive cardiologist to facilitate an unbiased decision.

Regardless of the strategy chosen, the importance of compliance with optimal medical therapy (statins, antiplatelet agents, diabetes treatment) should be continuously emphasized to the patient.

■ WHAT DOES THE FUTURE HOLD?

Despite unequivocal evidence that CABG is superior to PCI in eligible patients with diabetes mellitus in the current era, PCI technologies continue to evolve rapidly. Newer second-generation drug-eluting stents have shown lower rates of restenosis^{38,39} and may shorten the duration of post-PCI dual-antiplatelet therapy, a nuisance that has negatively affected outcomes with drug-eluting stents (because of problems of cost, poor compliance, and increased bleeding risk).

At the same time, CABG has also improved, with more extensive use of complete arterial conduits and use of an off-pump bypass technique that in theory poses a lower risk of stroke, although this has not yet been shown in a randomized trial.⁴⁰

Alternative approaches are being investigated. One of them is a hybrid procedure in which minimally invasive off-pump arterial grafting is combined with drug-eluting stents, which may reduce the risk of stroke and speed postoperative recovery. ■

It remains to be seen if the benefits of CABG will be sustained over 10 years and longer

REFERENCES

1. Flaherty JD, Davidson CJ. Diabetes and coronary revascularization. *JAMA* 2005; 293:1501–1508.
2. Nicholls SJ, Tuzcu EM, Kalidindi S, et al. Effect of diabetes on progression of coronary atherosclerosis and arterial remodeling: a pooled analysis of 5 intravascular ultrasound trials. *J Am Coll Cardiol* 2008; 52:255–262.
3. Mack MJ, Banning AP, Serruys PW, et al. Bypass versus drug-eluting stents at three years in SYNTAX patients with diabetes mellitus or metabolic syndrome. *Ann Thorac Surg* 2011; 92:2140–2146.
4. Kapur A, Hall RJ, Malik IS, et al. Randomized comparison of percutaneous coronary intervention with coronary artery bypass grafting in diabetic patients. 1-year results of the CARDia (Coronary Artery Revascularization in Diabetes) trial. *J Am Coll Cardiol* 2010; 55:432–440.
5. The final 10-year follow-up results from the BARI randomized trial. *J Am Coll Cardiol* 2007; 49:1600–1606.
6. Hlatky MA. Compelling evidence for coronary-bypass surgery in patients with diabetes. *N Engl J Med* 2012; 367:2437–2438.
7. Levine GN, Bates ER, Blankenship JC, et al. 2011 ACCF/AHA/SCAI Guideline for Percutaneous Coronary Intervention: executive summary: a report of the American College of Cardiology Foundation/American Heart Association Task Force on Practice Guidelines and the Society for Cardiovascular Angiography and Interventions. *Circulation* 2011; 124:2574–2609.
8. Farkouh ME, Domanski M, Sleeper LA, et al. Strategies for multivessel revascularization in patients with diabetes. *N Engl J Med* 2012; 367:2375–2384.
9. Moreno PR, Murcia AM, Palacios IF, et al. Coronary composition and macrophage infiltration in atherectomy specimens from patients with diabetes mellitus. *Circulation* 2000; 102:2180–2184.
10. Blucher M, Unger R, Rassoul F, et al. Relation between glycaemic control, hyperinsulinaemia and plasma concentrations of soluble adhesion molecules in patients with impaired glucose tolerance or type II diabetes. *Diabetologia* 2002; 45:210–216.
11. Creager MA, Luscher TF, Cosentino F, Beckman JA. Diabetes and vascular disease: pathophysiology, clinical consequences, and medical therapy: part I. *Circulation* 2003; 108:1527–1532.
12. Biondi-Zoccai GG, Abbate A, Luzzo G, Biasucci LM. Atherothrombosis, inflammation, and diabetes. *J Am Coll Cardiol* 2003; 41:1071–1077.
13. Waller BF, Palumbo PJ, Lie JT, Roberts WC. Status of the coronary arteries at necropsy in diabetes mellitus with onset after age 30 years. Analysis of 229 diabetic patients with and without clinical evidence of coronary heart disease and comparison to 183 control subjects. *Am J Med* 1980; 69:498–506.
14. Morrish NJ, Stevens LK, Head J, et al. A prospective study of mortality among middle-aged diabetic patients (the London Cohort of the WHO Multinational Study of Vascular Disease in Diabetics) I: causes and death rates. *Diabetologia* 1990; 33:538–541.
15. Laskey WK, Selzer F, Vlachos HA, et al. Comparison of in-hospital and one-year outcomes in patients with and without diabetes mellitus undergoing percutaneous catheter intervention (from the National Heart, Lung, and Blood Institute Dynamic Registry). *Am J Cardiol* 2002; 90:1062–1067.
16. Mathew V, Gersh BJ, Williams BA, et al. Outcomes in patients with diabetes mellitus undergoing percutaneous coronary intervention in the current era: a report from the Prevention of REStenosis with Trilast and its Outcomes (PRESTO) trial. *Circulation* 2004; 109:476–480.
17. Glaser R, Selzer F, Faxon DP, et al. Clinical progression of incidental, asymptomatic lesions discovered during culprit vessel coronary intervention. *Circulation* 2005; 111:143–149.
18. Morriconi L, Ranucci M, Denti S, et al. Diabetes and complications after cardiac surgery: comparison with a non-diabetic population. *Acta Diabetologica* 1999; 36:77–84.
19. Hogue CW Jr., Murphy SF, Schechtman KB, Davila-Roman VG. Risk factors for early or delayed stroke after cardiac surgery. *Circulation* 1999; 100:642–647.
20. The Bypass Angioplasty Revascularization Investigation (BARI) Investigators. Comparison of coronary bypass surgery with angioplasty in patients with multivessel disease. *N Engl J Med* 1996; 335:217–225.
21. King SB 3rd, Kosinski AS, Guyton RA, Lembo NJ, Weintraub WS. Eight-year mortality in the Emory Angioplasty versus Surgery Trial (East). *J Am Coll Cardiol* 2000; 35:1116–1121.
22. Kurbaan AS, Bowker TJ, Ilsley CD, Sigwart U, Rickards AF; CABRI Investigators (Coronary Angioplasty versus Bypass Revascularization Investigation). Difference in the mortality of the CABRI diabetic and nondiabetic populations and its relation to coronary artery disease and the revascularization mode. *Am J Cardiol* 2001; 87:947–950.
23. Serruys PW, Ong AT, van Herwerden LA, et al. Five-year outcomes after coronary stenting versus bypass surgery for the treatment of multivessel disease: the final analysis of the Arterial Revascularization Therapies Study (ARTS) randomized trial. *J Am Coll Cardiol* 2005; 46:575–581.
24. Booth J, Clayton T, Pepper J, et al. Randomized, controlled trial of coronary artery bypass surgery versus percutaneous coronary intervention in patients with multivessel coronary artery disease: six-year follow-up from the Stent or Surgery Trial (SoS). *Circulation* 2008; 118:381–388.
25. Rodriguez AE, Baldi J, Fernandez Pereira C, et al. Five-year follow-up of the Argentine randomized trial of coronary angioplasty with stenting versus coronary bypass surgery in patients with multiple vessel disease (ERACI II). *J Am Coll Cardiol* 2005; 46:582–588.
26. Serruys PW, Morice MC, Kappetein AP, et al. Percutaneous coronary intervention versus coronary-artery bypass grafting for severe coronary artery disease. *N Engl J Med* 2009; 360:961–972.
27. Mohr FW, Morice MC, Kappetein AP, et al. Coronary artery bypass graft surgery versus percutaneous coronary intervention in patients with three-vessel disease and left main coronary disease: 5-year follow-up of the randomised, clinical SYNTAX trial. *Lancet* 2013; 381:629–638.
28. Kamalesh M, Sharp TG, Tang XC, et al. Percutaneous coronary intervention versus coronary bypass surgery in United States veterans with diabetes. *J Am Coll Cardiol* 2013; 61:808–816.
29. Ellis SG. Coronary revascularization for patients with diabetes: updated data favor coronary artery bypass grafting. *J Am Coll Cardiol* 2013; 61:817–819.
30. Bhatt DL, Marso SP, Lincoff AM, et al. Abciximab reduces mortality in diabetics following percutaneous coronary intervention. *J Am Coll Cardiol* 2000; 35:922–928.
31. Serruys PW, Ong AT, Morice MC, et al. Arterial Revascularisation Therapies Study Part II - Sirolimus-eluting stents for the treatment of patients with multivessel de novo coronary artery lesions. *EuroIntervention* 2005; 1:147–156.
32. Kappetein AP, Head SJ, Morice MC, et al. Treatment of complex coronary artery disease in patients with diabetes: 5-year results comparing outcomes of bypass surgery and percutaneous coronary intervention in the SYNTAX trial. *Eur J Cardiothorac Surg* 2013; 43:1006–1013.
33. Banning AP, Westaby S, Morice MC, et al. Diabetic and nondiabetic patients with left main and/or 3-vessel coronary artery disease: comparison of outcomes with cardiac surgery and paclitaxel-eluting stents. *J Am Coll Cardiol* 2010; 55:1067–1075.
34. Weintraub WS, Grau-Sepulveda MV, Weiss JM, et al. Comparative effectiveness of revascularization strategies. *N Engl J Med* 2012; 366:1467–1476.
35. Magnuson EA, Farkouh ME, Fuster V, et al; FREEDOM Trial Investigators. Cost-effectiveness of percutaneous coronary intervention with drug eluting stents versus bypass surgery for patients with diabetes and multivessel coronary artery disease: results from the FREEDOM trial. *Circulation* 2013; 127:820–831.
36. Loop FD, Lytle BW, Cosgrove DM, et al. Influence of the internal-mammary-artery graft on 10-year survival and other cardiac events. *N Engl J Med* 1986; 314:1–6.
37. Tector AJ, Schmahl TM, Janson B, et al. The internal mammary artery graft. Its longevity after coronary bypass. *JAMA* 1981; 246:2181–2183.
38. Stone GW, Rizvi A, Newman W, et al. Everolimus-eluting versus paclitaxel-eluting stents in coronary artery disease. *N Engl J Med* 2010; 362:1663–1674.
39. Serruys PW, Silber S, Garg S, et al. Comparison of zotarolimus-eluting and everolimus-eluting coronary stents. *N Engl J Med* 2010; 363:136–146.
40. Lamy A, Devereaux PJ, Prabhakaran D, et al. Off-pump or on-pump coronary-artery bypass grafting at 30 days. *N Engl J Med* 2012; 366:1489–1497.

ADDRESS: Mehdi H. Shishehbor, DO, MPH, PhD, Interventional Cardiology and Vascular Medicine, J3-5, Cleveland Clinic, 9500 Euclid Avenue, Cleveland, OH 44195; e-mail: shishem@ccf.org