

TABLE OF CONTENTS

FROM THE EDITOR

**COPD: More options mean 332
potentially better control**

Although newer drugs can improve control, to make the biggest impact on mortality we need to wage war on smoking.

B. F. MANDELL

1-MINUTE CONSULT

**Do patients who received only two doses 346
of hepatitis B vaccine need a booster?**

They should get one. However, two doses may be enough in healthy younger adults.

A. JUNEWICZ, A. BRATEANU, AND C. NIELSEN

THE CLINICAL PICTURE

**Encephalopathy despite thiamine repletion 350
during alcohol withdrawal**

When managing a patient with chronic alcohol abuse who is beginning to withdraw, expect the unexpected.

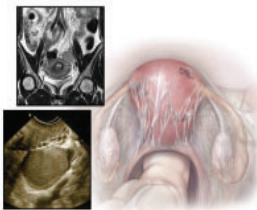
N. D. CRESCIE, K. A. McMANUS, C. D. SIFRI, AND B. B. WILSON

CME CREDIT IMAGING IN PRACTICE

Role of imaging in endometriosis 361

Transvaginal ultrasonography and magnetic resonance imaging confirm the diagnosis and guide surgical treatment.

G. LO MONTE, J. M. WENGER, P. PETIGNAT, AND R. MARCI



CONTINUED ON PAGE 331

CLEVELAND CLINIC JOURNAL OF MEDICINE

Online Features

Free e-mail alerts

To receive your free e-mail Table of Contents (eTOC) when a new issue of the *Cleveland Clinic Journal of Medicine* is released, just click on "Alerts" from any page at www.ccm.org.

It is quick and easy. All you need is your e-mail address. No other registration information is required.

Social Networking

To post a *CCJM* article to Facebook or your favorite social networking site, just click on the icon at the bottom of any online article.



Upcoming Features

- Why study cardiovascular outcomes in type 2 diabetes?
- Patent foramen ovale and stroke: Unanswered questions
- Allowing higher blood pressure in the frail elderly
- Sleep apnea ABCs: Airway, breathing, circulation
- Victims of intimate partner violence: How to help
- New-onset epilepsy in the elderly: Meeting the challenges
- Perioperative beta-blockers: Evolving evidence
- Diagnostic urgency: Statin-induced myopathy



DEDICATED TO LIFELONG LEARNING
CLEVELAND CLINIC JOURNAL OF MEDICINE

CONTINUED FROM PAGE 324

REVIEW

Prescribing for the pregnant patient 367



Key concepts to consider and practical advice for choosing the safest possible drug treatments.

N. MEHTA, K. CHEN, AND R.O. POWRIE

REVIEW

Chronic obstructive pulmonary disease: An update for the primary physician 373



COPD has seen several changes in its assessment and treatment in recent years, reflecting advances in our understanding.

U. HATIPOĞLU AND L.S. ABOUSSOUAN

DEPARTMENTS

CME Calendar 325

Letters to the Editor 335

Readers comment on managing insulin before surgery (November 2013), a CME test question regarding treating hypertension in the elderly (December 2013), preventing stress ulcer in hospitalized patients (January 2014), and assessing albuminuria (January 2014).

Directions for taking CME tests online 384

To receive CME credit, read any or all of the CME-certified articles in this issue (those that carry the CME logo), then go to www.ccm.org to take the test for the article or articles you select. It should take up to 1 hour to complete the activity for each article.

Release date: June 1, 2014

Expiration date: May 31, 2015