

Online Features

Free e-mail alerts

To receive your free e-mail Table of Contents (eTOC) when a new issue of the *Cleveland Clinic Journal of Medicine* is released, just click on "Alerts" from any page at www.ccmj.org.

It is quick and easy. All you need is your e-mail address. No other registration information is required.

Social Networking

To post a *CCJM* article to Facebook or your favorite social networking site, just click on the icon at the bottom of any online article.



TABLE OF CONTENTS

FROM THE EDITOR

Smart testing: 393

An old idea, a new series

We hope to change test-ordering behaviors in situations in which there is a smart—and a not-so-smart—way to pursue a diagnosis.

B.F. MANDELL

NEW SERIES: SMART TESTING

Series introduction: 403

Doing the right thing to control health care costs

Cleveland Clinic Journal of Medicine initiates its contribution to high-value care with a new series, "Smart Testing."

P.C. ALGUIRE

SMART TESTING

Is cardiac stress testing appropriate in asymptomatic adults at low risk? 405

This test is most useful in patients who have chest pain and shortness of breath on exertion.

C.D. SMITH AND P.C. ALGUIRE

THE CLINICAL PICTURE

Double trouble: Simultaneous complications of therapeutic thoracentesis 407

A 51-year-old man with liver disease developed both pneumothorax and pulmonary edema.

B. APTER AND P. ARONOWITZ

COMMENTARY

Changes to practice may help avoid 'double trouble' 409

When draining large effusions, take precautions to prevent pneumothorax and reexpansion pulmonary edema.

E. MIRELES-CABODEVILA AND R.W. ASHTON

IM BOARD REVIEW

Swelling and pain 2 weeks after a dog bite 411

At first the bite seemed to improve, but now it is worsening, with red streaks from wrist to elbow.

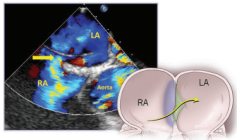
M.A. LANE AND T.H. TAYLOR

CONTINUED ON PAGE 392

CONTINUED FROM PAGE 391



REVIEW



Patent foramen ovale and cryptogenic stroke: Many unanswered questions **417**

If a stroke has no obvious cause, should you look for a patent foramen ovale? And what should you do if you find one?

C. ROTH AND O. ALLI

COMMENTARY

Patient foramen ovale and the risk of cryptogenic stroke **425**

There is no longer any doubt that patent foramen ovale can be the culprit in stroke, and closure is safe and effective.

J. TOBIS



REVIEW

Promoting higher blood pressure targets for frail older adults: A consensus guideline from Canada **427**

Consider the frailty of your elderly patients when prescribing antihypertensive treatment.

L.H. MALLERY, M. ALLEN, I. FLEMING, K. KELLY, S. BOWLES, J. DUNCAN, AND P. MOORHOUSE



REVIEW

Intimate partner violence: How you can help female survivors **439**

The patient is more likely to disclose abuse if the physician asks. Counseling and referral improve safety and health.

J.C. CHANG

PATIENT INFORMATION

Planning ahead: How to stay safe **447**

DEPARTMENTS

CME Calendar **395**

Letters to the Editor **401**

A reader comments on a serious complication of a cardiac stress test (May 2014).

Directions for taking CME tests online **448**

To receive CME credit, read any or all of the CME-certified articles in this issue (those that carry the CME logo), then go to www.ccjm.org to take the test for the article or articles you select. It should take up to 1 hour to complete the activity for each article.

Release date: July 1, 2014; expiration date: June 30, 2015

Upcoming Features

- **Defensive medicine: Is every patient a potential lawsuit?**
- **Should we image acute, nonspecific low back pain?**
- **Sleep apnea ABCs: Airway, breathing, circulation**
- **New-onset epilepsy in the elderly: Meeting the challenges**
- **Evolving evidence on perioperative beta-blockers**
- **Hand, foot, and mouth disease: Not just in kids**
- **Why study cardiovascular outcomes in type 2 diabetes?**
- **Diagnostic urgency: Statin-induced myopathy**



DEDICATED TO LIFELONG LEARNING
CLEVELAND CLINIC JOURNAL OF MEDICINE