

TABLE OF CONTENTS

FROM THE EDITOR

Reflux redux **633**
 Even the diseases we deal with every day sometimes warrant a second look.

B. F. MANDELL

THE CLINICAL PICTURE

Lady Windermere syndrome: Mycobacterium of sophistication **641**
 The typical patient is a thin, well-mannered elderly woman who voluntarily suppresses her cough out of politeness.

C. DONATELLI AND A. C. MEHTA

1-MINUTE CONSULT

What can we offer patients with mild cognitive impairment? **650**
 Physicians can promote healthy nutrition, physical activity, socialization, and mental activity, but no drug is approved for it.

T. HERR, J. A. PILLAI, AND B. J. MESSINGER-RAPPORT

THE CLINICAL PICTURE

Upper-limb deep vein thrombosis in Paget-Schroetter syndrome **658**
 A weight lifter with no medical history presented with pain and swelling in his left arm.

N. THIRUCHELVAM, F. MBUVAH, G. KISTANGARI, AND A. K. R. ANUMANDLA



1-MINUTE CONSULT

Are breast and pelvic exams necessary when prescribing hormonal contraception? **661**
 Only a medical history and blood pressure measurement are needed before prescribing estrogen contraceptives.

P. BATUR AND A. B. BERENSON

1-MINUTE CONSULT/SMART TESTING

Do healthy patients need routine laboratory testing before elective noncardiac surgery? **664**
 Testing often increases costs and anxiety, with little benefit.

N. HOUCHEMS

CONTINUED ON PAGE 631

Online Features

Access

Cleveland Clinic Journal of Medicine content is readily available to all and is free of charge at www.ccjm.org. On your first visit, we will ask you to take a few minutes to register, but subsequent visits will be unencumbered except for an occasional request for your e-mail address when you visit using another device (eg, mobile phone, tablet).

Services

- Navigate quickly to articles in current and past issues via links on the home page and pull-down menus at the top of the page. Use the search function to find a specific article, or browse by topic or article type.
- Continuing medical education activities are accessible from article links and from a CME pull-down menu on the home page. Participation is free.
- Follow links on the home page to news, summaries of recent scientific meetings, and interactive quizzes.
- Click on the PDF symbol at the top of any online article to read, download, or print the article in PDF format.

Social Networking

To post a *CCJM* article to Facebook or Twitter, just click on the icon at the top of any online article.

www.ccjm.org

Upcoming Features

- Pancreas transplant for diabetes mellitus
- Cognitive bias: A cause of diagnostic error
- Recreational marijuana: Pleasures and pitfalls
- When COPD or asthma and sleep apnea overlap
- Recognizing, treating alcohol withdrawal syndrome
- Advances in treating dyslipidemia
- Insulin pumps: Beyond basal-bolus
- Asymptomatic carotid artery disease: A personalized approach
- Neurologic emergencies for the nonneurologist



DEDICATED TO LIFELONG LEARNING
CLEVELAND CLINIC JOURNAL OF MEDICINE

OCTOBER 2015

CONTINUED FROM PAGE 630

EDITORIAL

Why do clinicians continue to order 'routine preoperative tests' despite the evidence? 667

The authors propose several reasons and possible solutions.

A. BRATEANU AND M.B. ROTHBERG

IM BOARD REVIEW.....

A 56-year-old with diarrhea and weakness 671

The patient has unintentionally lost 137 lb over the past year. What is the cause?

M.E. MCCABE IV AND A.Y. KARA

ADDRESSING DISPARITIES IN HEALTHCARE.....

Genitourinary manifestations of sickle cell disease 679

Sickling can lead to nephropathy, priapism, papillary necrosis, and renal medullary carcinoma.

S. GEBRESELISSIE, M.N. SIMMONS, AND D.K. MONTAGUE

REVIEW

GERD: Diagnosing and treating the burn 685

If symptoms do not respond to a proton pump inhibitor or are atypical, testing may be needed.

M. ALZUBAIDI AND S. GABBARD

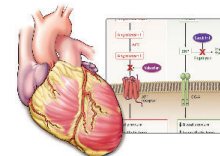


INTERPRETING KEY TRIALS.....

A new class of drugs for systolic heart failure: The PARADIGM-HF study 693

Valsartan-sacubitril is the first new drug in over a decade to decrease death rates in patients with systolic heart failure.

I.A. SABE, M.S. JACOB, AND D.O. TAYLOR



EDITORIAL

Sacubitril-valsartan and the evolution of heart failure care 702

It was hard to believe that any new additional therapy would make a significant difference.

R.C. STARLING

DEPARTMENTS

Letters to the Editor 638

Readers comment on resuming anticoagulation after hemorrhage (April 2015) and on starting insulin therapy in patients with type 2 diabetes (August 2015).

CME Calendar 649

CME Test Directions Inside back cover