

TABLE OF CONTENTS

FROM THE EDITOR

When we need to remember that it is more than a job 159

It is the nature of our engagement with our patients and our colleagues that makes what we do more than a job.

B.F. MANDELL

1-MINUTE CONSULT

Can patients with infectious endocarditis be safely anticoagulated? 169

New infectious endocarditis is not an indication for starting anticoagulation, and whether to continue it is a difficult decision.

M.S. RANDHAWA, J. PILE, AND M. GOMES

COMMENTARY

It is not the critic's voice that should count 174

Lawsuits often confront physicians with incidental imperfections in the care they provided or with errors in their documentation.

K.C. GIORDANO

EDITORIAL

The emotional impact of a malpractice suit on physicians: Maintaining resilience 177

Resilient people can face reality, see a better future, put things into perspective, and bounce back from adversity.

S.J. REHM AND B.L. BORDEN

THE CLINICAL PICTURE.....

Fungal folliculitis masquerading as acute exanthematous pustulosis 179

Concern was raised for antibiotic-related acute exanthematous pustulosis, but punch biopsy revealed the yeast *Malassezia*.

T. SHARMA, A. VIJ, AND A. SOOD

MEDICAL GRAND ROUNDS

Advances in the treatment of dyslipidemia 181

Current guidelines do not set specific targets for LDL-C, but evidence supports the concept that lower is better.

M.S. SABATINE

CME CREDIT **INTERPRETING KEY TRIALS**

Interpreting SPRINT: How low should you go? 187

In treating hypertension, lower systolic pressure is better than higher—but with caveats.

G. THOMAS, J.V. NALLY, AND M.A. POHL

CONTINUED ON PAGE 164



Online Features

Access

Cleveland Clinic Journal of Medicine content is readily available to all and is free of charge at www.ccjm.org. On your first visit, we will ask you to take a few minutes to register, but subsequent visits will be unencumbered except for an occasional request for your e-mail address when you visit using another device (eg, mobile phone, tablet).

Services

- Navigate quickly to articles in current and past issues via links on the home page and pull-down menus at the top of the page. Use the search function to find a specific article, or browse by topic or article type.
- Continuing medical education activities are accessible from article links and from a CME pull-down menu on the home page. Participation is free.
- Follow links on the home page to news, summaries of recent scientific meetings, and interactive quizzes.
- Click on the PDF symbol at the top of any online article to read, download, or print the article in PDF format.

Social Networking

To post a *CCJM* article to Facebook or Twitter, just click on the icon at the top of any online article.

www.ccjm.org

CONTINUED FROM PAGE 160

EDITORIAL

Blood pressure management in the wake of SPRINT **196**

SPRINT should be interpreted in the context of prior trials and of its inclusion and exclusion criteria.

E.J. FILIPPONE AND A.J. FOY

CME CREDIT REVIEW

Managing patients at genetic risk of breast cancer **199**

People with these syndromes have a much higher risk, and the cancers often occur at an early age.

H.J. PEDERSON, S.A. PADIA, M. MAY, AND S. GROBMYER

CME CREDIT REVIEW

Prescribing opioids in primary care: Safely starting, monitoring, and stopping **207**

Prescription drug abuse has reached epidemic proportions. Some patients benefit from opioids, but many suffer harm.

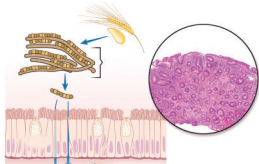
D.G. TOBIN, R. ANDREWS, AND W.C. BECKER

CME CREDIT REVIEW

Celiac disease: Managing a multisystem disorder **217**

This autoimmune disorder can cause symptoms that involve not only the gastrointestinal tract but also the skin and bones.

G.S. KOCHHAR, T. SINGH, A. GILL AND D.F. KIRBY



EDITORIAL

The microbiome in celiac disease: Beyond diet-genetic interactions **228**

Evidence points to the mix of bacteria that make the gut their home, collectively called the microbiome.

J.U. SCHER

DEPARTMENTS

Letters to the Editor **167**

A reader comments on the findings of the PARADIGM-HF trial (October 2015).

CME Calendar **195**

2015 Reviewers **231**

CME Test Directions **232**

Upcoming Features

- When does asymptomatic aortic stenosis warrant surgery?
- Managing acute exacerbations of COPD
- Drugs that harm bone: Mitigating the risk
- Navigating pneumococcal vaccination
- Prostate cancer: Every man's fate?
- How should diabetes be managed in the hospital?
- Incidental pulmonary artery hypertension on echocardiography
- Hereditary breast cancer: Shared, informed decisions
- Endocrine-disrupting chemicals and reproductive health

