

JAMES K. STOLLER, MD, MS

Chair, Education Institute, Cleveland Clinic;
Professor, Cleveland Clinic Lerner College of
Medicine of Case Western Reserve University,
Cleveland, OH

Alpha-1 antitrypsin deficiency: An underrecognized, treatable cause of COPD

ABSTRACT

Alpha-1 antitrypsin deficiency is common but underrecognized. Because delayed diagnosis is thought to be associated with adverse outcomes, clinicians are encouraged to follow available guidelines and test for the disease in all symptomatic adults with fixed airflow obstruction. The weight of available evidence supports the biochemical and clinical efficacy of intravenous augmentation therapy. Promising new therapies are being investigated.

KEY POINTS

Only about 15% of people who have alpha-1 antitrypsin disease have received a diagnosis of it.

The disease is genetic. People who are homozygous for the Z allele of the gene that codes for alpha-1 antitrypsin are at increased risk of lung and liver disease.

Chronic obstructive pulmonary disease (COPD) due to alpha-1 antitrypsin deficiency is difficult to distinguish from "usual" COPD on a clinical basis, but blood tests are available.

The basic care of a patient with COPD due to alpha-1 antitrypsin disease is the same as for any patient with COPD, ie, with bronchodilators, inhaled steroids, supplemental oxygen, preventive vaccinations, and pulmonary rehabilitation as indicated. Specific treatment consists of weekly infusions of alpha-1 antitrypsin (augmentation therapy).

Dr. Stoller has disclosed consulting for Arrowhead.

doi:10.3949/ccjm.83a.16031

A LPHA-1 ANTITRYPSIN DEFICIENCY is a common but underrecognized genetic condition that increases the risk of chronic obstructive pulmonary disease (COPD) and liver disease. Primary care providers can play a critical role in detecting it and managing patients who have it.

RECOGNIZED CASES ARE THE TIP OF THE ICEBERG

First described in 1963,¹ alpha-1 antitrypsin deficiency is estimated to affect 100,000 Americans, fewer than 15,000 of whom have received a clinical diagnosis. As further evidence of its underrecognition,²⁻⁷ many patients experience long delays between their first symptoms and the diagnosis. Early studies indicated that the average diagnostic delay was 7.2 years,⁴ and the latest studies, as recent as 2013, indicate a similar diagnostic delay.⁷

Furthermore, many patients see multiple healthcare providers before receiving the correct diagnosis. A 1994 survey by this author⁴ found that 43.7% of patients who had severe deficiency of alpha-1 antitrypsin saw at least three physicians before the correct diagnosis was made.

Why is the disease underrecognized?

Several reasons may account for underrecognition of this disease. Many clinicians—including, unfortunately, many pulmonologists—do not know much about it,^{7,8} do not adhere to clinical guidelines,^{9,10} or harbor the misperception that there is no therapy available and, therefore, no compelling reason to make a diagnosis.⁷

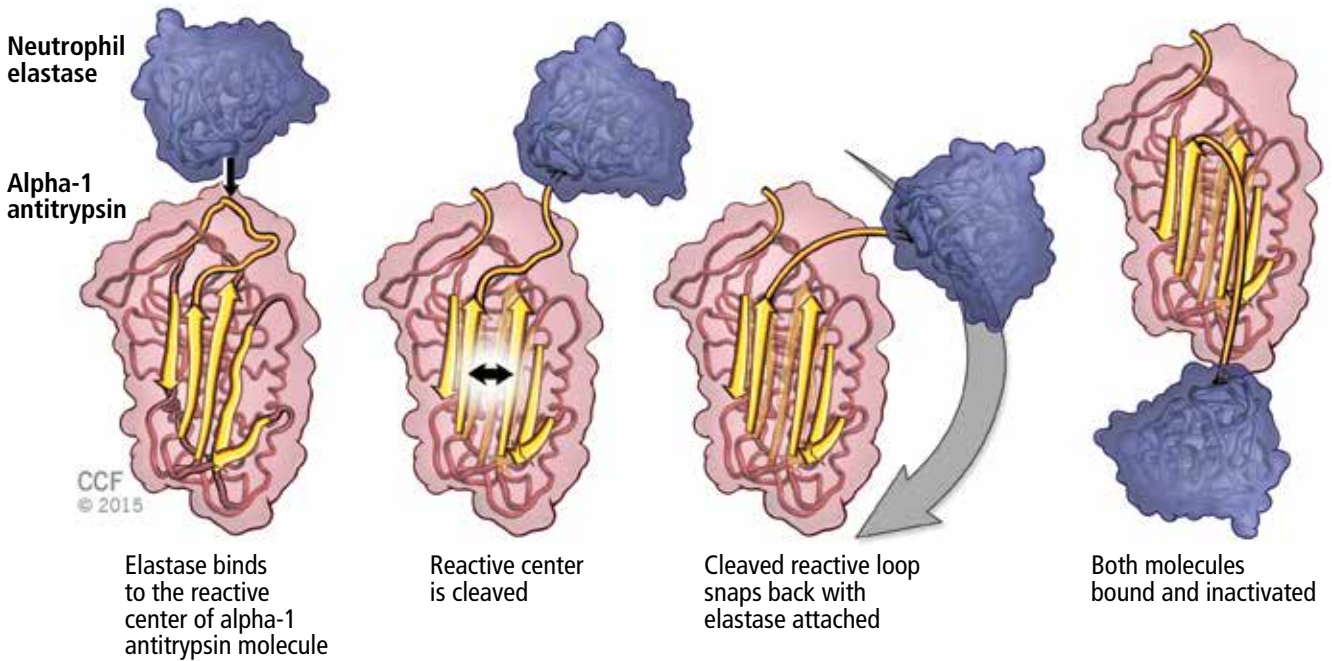


FIGURE 1. “Mousetrap-like” mechanism by which alpha-1 antitrypsin binds and inactivates neutrophil elastase.

The estimated US prevalence is 100,000, but the number diagnosed is < 15,000

Regarding inadequate knowledge, in a study by Taliercio, Chatburn, and this author,⁸ internal medicine residents scored only 63% correct on a 10-question quiz on diagnostic features of alpha-1 antitrypsin deficiency. There was no evidence of a training effect—senior residents scored no higher than interns.

Similarly, when Greulich et al⁷ surveyed German and Italian internists, general practitioners, and pulmonologists, one-fourth to one-half of them (depending on specialty and country) stated that they knew either very little or nothing at all about alpha-1 antitrypsin deficiency. In addition, 7% to 8% agreed with the statement, “There is no treatment available for this disease.”⁷

Nonadoption of clinical guidelines has been widely recognized in medicine and is evident in the failure to implement various recommended practices,^{9,10} such as low-stretch ventilation for acute respiratory distress syndrome and prophylaxis against deep vein thrombosis.

Finding the rest of the iceberg

Efforts to enhance compliance with guidelines on testing for alpha-1 antitrypsin deficiency have included using the electronic medical re-

cord to prompt physicians to test appropriate candidates.^{11–13}

Jain et al¹³ examined the effect of installing such a prompting system to remind physicians to test for alpha-1 antitrypsin deficiency in patients with airflow obstruction that does not reverse with a bronchodilator—a recognized indication for testing for this disease according to standards endorsed by the American Thoracic Society and European Respiratory Society.¹⁴ At baseline, only 4.7% of appropriate candidates were being tested; after a prompt was installed in the electronic medical record, the rate rose to 15.1%, still a minority of candidates.

Another strategy is to empower respiratory therapists who perform pulmonary function tests to invite patients to be tested if their pulmonary function tests show postbronchodilator airflow obstruction. Rahaghi et al¹⁵ showed that using this strategy, 20 (0.63%) of 3,152 patients who were found to have fixed airflow obstruction when they underwent pulmonary function testing were newly diagnosed with severe deficiency of alpha-1 antitrypsin. Other targeted detection studies in patients with COPD estimated the prevalence of alpha-1 antitrypsin deficiency at up to 12%.³

■ PHYSIOLOGY AND PATHOPHYSIOLOGY OF ALPHA-1 ANTITRYPSIN DEFICIENCY

Alpha-1 antitrypsin is a single-chain, 394-amino acid glycoprotein with three carbohydrate side chains found at asparagine residues along the primary structure.¹⁶

A major physiologic function of this molecule is to bind neutrophil elastase, which it does avidly. In a “mousetrap-like” mechanism,¹⁶ an active site on the alpha-1 antitrypsin molecule captures the neutrophil elastase and is cleaved, releasing steric energy in the molecule, catapulting the neutrophil elastase to the opposite side of the alpha-1 antitrypsin molecule, and inactivating it (**Figure 1**).

MM is normal, ZZ is not

Alpha-1 antitrypsin deficiency is inherited as an autosomal-codominant condition.¹⁷

The *SERPINA1* gene, which codes for alpha-1 antitrypsin, is located on the long arm of the 14th chromosome, and more than 150 alleles of this gene have been identified to date. The normal allele is denoted M, and the allele most commonly associated with severe deficiency is denoted Z. People who are homozygous for the M allele (ie, normal) are called *PI*MM* (PI stands for “protease inhibitor”), and those who are homozygous for the Z allele are *PI*ZZ*. More than 90% of patients with severe alpha-1 antitrypsin deficiency are *PI*ZZ*.¹⁸

The Z allele has a single amino acid substitution (glutamic acid-to-lysine at position 342), which results in abnormal folding and formation of polymers of the Z molecule within hepatocytes.^{19,20} These polymers are recognized on liver biopsy as periodic acid-Schiff diastase-resistant eosinophilic inclusion bodies on histologic staining (**Figure 2**).

With alpha-1 antitrypsin trapped as Z-molecule polymers in the liver, the amount in the bloodstream falls, and there is a consequent decrease in the amount available in the lung to oppose the proteolytic burden of neutrophil elastase, especially in people who smoke or work in dusty environments.²¹

Tan et al²² have shown that some of the polymerized Z protein can escape the liver and circulate in the blood and that alveolar macrophages may also produce Z polymers. These Z polymers are chemotactic for neu-

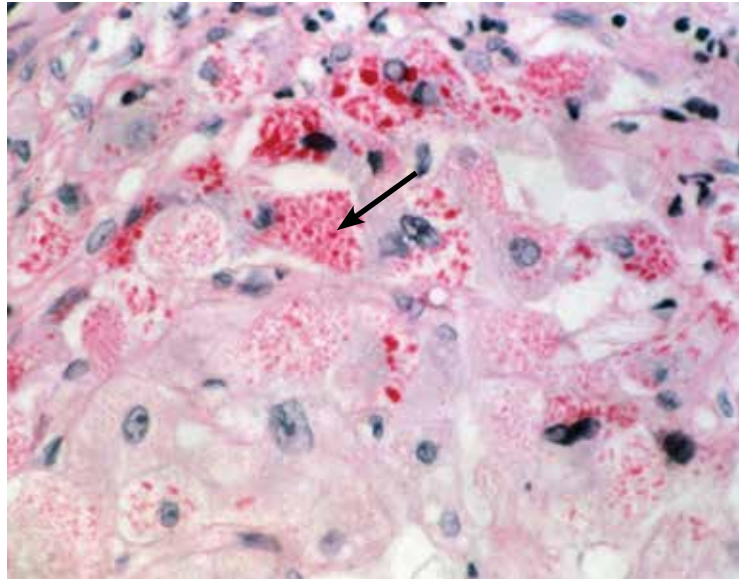


FIGURE 2. Histologic study of a liver biopsy specimen from a patient with *PI*ZZ* alpha-1 antitrypsin deficiency. The eosinophilic inclusion bodies (arrow) are periodic acid-Schiff-positive, diastase-resistant globules that contain polymerized, unsecreted Z-type alpha-1 antitrypsin.

trophils,²³ so that their presence in the lung fuels the inflammatory cascade by recruiting more neutrophils to the lung, thereby increasing the proteolytic burden to the lung and increasing the risk of emphysema. Z monomers that do circulate can bind neutrophil elastase, but their binding avidity to neutrophil elastase is substantially lower than that of M-type alpha-1 antitrypsin.

■ CLINICAL MANIFESTATIONS

Alpha-1 antitrypsin deficiency of the *PI*ZZ* type is associated with two major clinical manifestations:

- Emphysema, resulting from the loss of proteolytic protection of the lung by alpha-1 antitrypsin (a toxic loss of function), and
- Liver diseases such as cirrhosis and chronic hepatitis, which result from abnormal accumulation of alpha-1 antitrypsin within hepatocytes (a toxic gain of function), and hepatoma.¹⁷

Other clinical manifestations of *PI*ZZ* alpha-1 antitrypsin deficiency include panniculitis and an association with cytoplasmic antineutrophil cytoplasmic antibody-positive vasculitis.¹⁷

More than 90% of patients with severe alpha-1 antitrypsin deficiency are '*PI*ZZ*'



FIGURE 3. Computed tomographic scan through the apex (top image) and the base of the lungs (bottom image) in a patient with alpha-1 antitrypsin deficiency. Note that the emphysematous bullous changes are more pronounced at the bases than at the apices.

Some uncertainty exists regarding the risk associated with the *PI*MZ* heterozygous state because there has been no systematic longitudinal study of people with this genotype. However, the weight of available experience suggests that *PI*MZ* individuals who have never smoked are not at increased risk of developing emphysema.²⁴

**Findings from a national registry:
*PI*ZZ* COPD resembles 'usual' COPD**

Distinguishing patients with alpha-1 antitrypsin deficiency from those with “usual” COPD (ie, without alpha-1 antitrypsin deficiency) can be difficult, as shown in data from the National Heart, Lung, and Blood Institute’s Alpha-1 Antitrypsin Deficiency Registry study.¹⁸ This multicenter, longitudinal, observational study contains the largest well-characterized cohort with severe deficiency of alpha-1 antitrypsin (*PI*ZZ*, *PI*ZNull*, etc), with 1,129 patients.

Pulmonary function test results were consistent with emphysema in most of the patients in the registry. Mean postbronchodilator pulmonary function values (\pm standard error of the mean) were:

- Forced expiratory volume in 1 second (FEV_1) 46.7% of predicted (\pm 30%)
- Ratio of FEV_1 to forced vital capacity 42.9% (\pm 20.4%)
- Mean diffusing capacity for carbon monoxide 50.3% of predicted (\pm 22.5%).

Like many patients with usual COPD, 60% of the registry patients demonstrated a component of airway reactivity, with significant reversal of airflow obstruction over three spirometries after receiving a dose of an inhaled bronchodilator (characterized by a 12% and 200-mL postbronchodilator rise in FEV_1). Moreover, 78 patients had normal lung function.

Symptoms also resembled those in patients with usual emphysema, chronic bronchitis, or both. On enrollment in the registry, 83.9% of the patients had shortness of breath on exertion, 75.5% had wheezing with upper respiratory infections, 65.3% had wheezing without upper respiratory infection, 67.6% had recent debilitating chest illness, 42.4% had “usual” cough, and 49.6% had annual cough and phlegm episodes.

Imaging findings. Although the classic teaching is that emphysema due to alpha-1 antitrypsin deficiency produces lower-lobe hyperlucency on plain films, relying on this sign would lead to underrecognition, as 36% of *PI*ZZ* patients have apical-predominant emphysema on chest computed tomography,²⁴ which resembles the usual centriacinar emphysema pattern. **Figure 3** shows axial com-

puted tomographic scans through the apices and the bases of the lungs of a patient with alpha-1 antitrypsin deficiency.

In view of these difficulties, guidelines from the American Thoracic Society and European Respiratory Society¹⁴ endorse testing for alpha-1 antitrypsin deficiency in all adults who have symptoms and fixed airflow obstruction (Table 1).

■ CONSEQUENCES OF ALPHA-1 ANTITRYPSIN DEFICIENCY

Two large screening studies^{2,3,25,26} followed people who were identified at birth as having alpha-1 antitrypsin deficiency to examine the natural course of the disease.

The larger of the two studies²⁷ tested 200,000 Swedish newborns. Follow-up of this cohort to age 35 indicated that 35-year-old never-smoking *PI*ZZ* individuals have normal lung function and no excess emphysema on computed tomography compared with normal peers matched for age and sex.²⁷ In contrast, the few *PI*ZZ* ever-smokers demonstrated a lower level of transfer factor and significantly more emphysema on computed tomography than normal (*PI*MM*) never-smokers.

Faster decline in lung function

Data from the National Heart, Lung, and Blood Institute registry indicate that, on average, people with severe alpha-1 antitrypsin deficiency lose lung function faster than people without the disease.²⁸ Specifically, in never-smokers in the registry, the average rate of FEV₁ decline was 67 mL/year, and among ex-smokers, it was 54 mL/year. Both of these values exceed the general age-related rate of FEV₁ decline of approximately 20 to 25 mL/year in never-smoking, normal adults. Among current smokers in the registry with severe alpha-1 antitrypsin deficiency, the rate of FEV₁ decline was 109 mL/year.

Rates of FEV₁ decline over time vary among groups with differing degrees of airflow obstruction. For example, *PI*ZZ* patients with moderate COPD (stage II of the four-stage Global Initiative for Chronic Obstructive Lung Disease classification system) lose lung function faster than patients with either milder or more severe degrees of airflow obstruction.²⁹

As with COPD in general, exacerbations

TABLE 1

Indications for diagnostic testing for alpha-1 antitrypsin deficiency

Diagnostic testing for alpha-1 antitrypsin deficiency should be performed in the following settings:

- Symptomatic adults with emphysema, chronic obstructive pulmonary disease, or asthma with airflow obstruction that is incompletely reversible after aggressive treatment with bronchodilators. (Notably, in populations where the prevalence of alpha-1 antitrypsin deficiency is known to be much lower than the general North American and Northern European prevalence, a type B recommendation for diagnostic testing in this setting is offered, ie, genetic testing should be discussed and could reasonably be accepted or declined.)
- Individuals with unexplained liver disease, including neonates, children, and adults, particularly the elderly.^a
- Asymptomatic individuals with persistent obstruction on pulmonary function tests with identifiable risk factors (eg, cigarette smoking, occupational exposure)
- Adults with necrotizing panniculitis

^a Unexplained liver disease refers to demonstrated liver disease that is not deemed due to another identifiable cause, eg, viral hepatitis, hemochromatosis, Wilson disease.

Adapted from American Thoracic Society, European Respiratory Society. American Thoracic Society/European Respiratory Society statement: standards for the diagnosis and management of individuals with alpha-1 antitrypsin deficiency. *Am J Respir Crit Care Med* 2003; 168:818–900.

of COPD in people with severe deficiency of alpha-1 antitrypsin are associated with worsened clinical status. In one series,³⁰ 54% of 265 *PI*ZZ* patients experienced an exacerbation in the first year of follow-up, and 18% experienced at least three. Such exacerbations occurred in December and January in 32% of these individuals, likely due to a viral precipitant.

Increased mortality

Severe deficiency of alpha-1 antitrypsin is associated not only with severe morbidity but also death. In the national registry, the overall rate of death was 18.6% at 5 years of follow-up, or approximately 3% per year.²⁸

A low FEV₁ at entry was a bad sign. Patients entering the registry with FEV₁ values below 15% of predicted had a 36% mortality rate at 3 years, compared with 2.6% in those whose baseline FEV₁ exceeded 50% of predicted.

Underlying causes of death in registry participants included emphysema (accounting for 72% of deaths) and cirrhosis (10%),³¹ which were the only causes of death more fre-

quent than in age- and sex-matched controls. In a series of never-smokers who had PI^*ZZ alpha-1 antitrypsin deficiency,³² death was less frequently attributed to emphysema than in the national registry (46%) and more often attributed to cirrhosis (28%), indicating that never-smokers may more frequently escape the ravages of emphysema but experience a higher rate of developing cirrhosis later in life.³³

■ DIAGNOSING ALPHA-1 ANTITRYPSIN DEFICIENCY

Available blood tests for alpha-1 antitrypsin deficiency include:

The serum alpha-1 antitrypsin level, most often done by nephelometry. Normal serum levels generally range from 100 to 220 mg/dL.

Phenotyping, usually performed by isoelectric focusing, which can identify different band patterns associated with different alleles.

Genotyping involves determining which alpha-1 antitrypsin alleles are present, most often using polymerase chain reaction testing targeting the *S* and *Z* alleles and occasionally set up to detect less common alleles such as *F* and *I*.¹⁷

Gene sequencing is occasionally necessary to achieve an accurate, definitive diagnosis.

Free, confidential testing is available

Clinical testing most often involves checking both a serum level and a phenotype or genotype. Such tests are often available in hospital laboratories and commercial laboratories, with testing also facilitated by the availability of free testing kits from several manufacturers of drugs for alpha-1 antitrypsin deficiency.

The Alpha-1 Foundation (www.alpha1.org)³⁴ also offers a free, home-based confidential testing kit through a research protocol at the Medical University of South Carolina (alphaone@musc.edu) called the Alpha-1 Coded Testing (ACT) study. Patients can receive a kit and lancet at home, submit the dried blood-spot specimen, and receive in the mail a confidential serum level and genotype.

The availability of such home-based confidential testing allows patients to seek testing without a physician's order and makes it easier for facilitated allied health providers, such as respiratory therapists, to recommend testing in appropriate clinical circumstances.¹⁵

■ TREATMENT OF ALPHA-1 ANTITRYPSIN DEFICIENCY

The treatment of patients with severe deficiency of alpha-1 antitrypsin and emphysema generally resembles that of patients with usual COPD. Specifically, smoking cessation, bronchodilators, occasionally inhaled steroids, supplemental oxygen, preventive vaccinations, and pulmonary rehabilitation are indicated as per usual clinical assessment.

Lung volume reduction surgery, which is beneficial in appropriate subsets of COPD patients, is generally less effective in those with severe alpha-1 antitrypsin deficiency,³⁵ specifically because the magnitude of FEV₁ increase and the duration of such a rise are lower than in usual COPD patients.

Augmentation therapy

Specific therapy for alpha-1 antitrypsin deficiency currently involves weekly intravenous infusions of purified, pooled human-plasma-derived alpha-1 antitrypsin, so-called augmentation therapy. Four drugs have been approved for use in the United States:

- Prolastin-C (Grifols, Barcelona, Spain)
- Aralast NP (Baxalta, Bonneckborn, IL)
- Zemaira (CSL Behring, King of Prussia, PA)
- Glassia (Baxalta, Bonneckborn, IL, and Kamada, Ness Ziona, Israel).

All of these were approved for use in the United States on the basis of biochemical efficacy. Specifically, infusion of these drugs has been shown to raise serum levels above a protective threshold value (generally considered 57 mg/dL, the value below which the risk of developing emphysema increases beyond normal).

Randomized controlled trials^{36,37} have addressed the efficacy of intravenous augmentation therapy, and although no single trial has been definitive, the weight of evidence shows that augmentation therapy can slow the progression of emphysema. For example, in a study by Dirksen et al,³⁷ augmentation therapy was associated with a slower progression of emphysema as assessed by the rate of loss of lung density on computed tomography.

On the basis of the available evidence, the American Thoracic Society and European Respiratory Society¹⁴ have recommended

Clinically, patients with COPD due to alpha-1 antitrypsin deficiency resemble those with 'usual' COPD

augmentation therapy in individuals with “established airflow obstruction from alpha-1 antitrypsin deficiency.”¹⁴ Their guidelines go on to say that the evidence that augmentation therapy is beneficial “is stronger for individuals with moderate airflow obstruction (eg, FEV₁ 35%–60% of predicted) than for those with severe airflow obstruction. Augmentation therapy is not currently recommended for individuals without emphysema.”

The guidelines recognize that although augmentation therapy does not satisfy the usual criteria for cost-effectiveness (< \$50,000 per quality-adjusted life year) due to its high cost (approximately \$100,000 per year if paid for out of pocket),³⁸ it is recommended for appropriate candidates because it is the only

available specific therapy for severe deficiency of alpha-1 antitrypsin.

Novel therapies

In addition to current treatment approaches of augmentation therapy, a number of novel treatment strategies are being investigated, several of which hold much promise.

Gene therapy, using adeno-associated virus to transfect the normal human gene into individuals with severe deficiency of alpha-1 antitrypsin, has been undertaken and is currently under study. In addition, a variety of approaches to interdict production of abnormal Z protein from the liver are being examined, as well as inhaled hyaluronic acid to protect the lung. ■

REFERENCES

1. **Laurell C, Eriksson A.** The electrophoretic alpha-1 globulin pattern of serum in alpha-1 antitrypsin deficiency. *Scand J Clin Lab Invest* 1963; 15:132–140.
2. **Aboussouan LS, Stoller JK.** Detection of alpha-1 antitrypsin deficiency: a review. *Respir Med* 2009; 103:335–341.
3. **Stoller JK, Brantly M.** The challenge of detecting alpha-1 antitrypsin deficiency. *COPD* 2013; 10(suppl 1):26–34.
4. **Stoller JK, Smith P, Yang P, Spray J.** Physical and social impact of alpha 1-antitrypsin deficiency: results of a survey. *Cleve Clin J Med* 1994; 61:461–467.
5. **Stoller JK, Sandhaus RA, Turino G, Dickson R, Rodgers K, Strange C.** Delay in diagnosis of alpha1-antitrypsin deficiency: a continuing problem. *Chest* 2005; 128:1989–1994.
6. **Campos MA, Wanner A, Zhang G, Sandhaus RA.** Trends in the diagnosis of symptomatic patients with alpha1-antitrypsin deficiency between 1968 and 2003. *Chest* 2005; 128:1179–1186.
7. **Greulich T, Ottaviani S, Bals R, et al.** Alpha1-antitrypsin deficiency—diagnostic testing and disease awareness in Germany and Italy. *Respir Med* 2013; 107:1400–1408.
8. **Taliercio RM, Chatburn RL, Stoller JK.** Knowledge of alpha-1 antitrypsin deficiency among internal medicine house officers and respiratory therapists: results of a survey. *Respir Care* 2010; 55:322–327.
9. **Rubinfeld GD, Cooper C, Carter G, Thompson BT, Hudson LD.** Barriers to providing lung-protective ventilation to patients with acute lung injury. *Crit Care Med* 2004; 32:1289–1293.
10. **Cabana MD, Rand CS, Powe NR, et al.** Why don't physicians follow clinical practice guidelines? A framework for improvement. *JAMA* 1999; 282:1458–1465.
11. **Rahaghi F, Ortega I, Rahaghi N, et al.** Physician alert suggesting alpha-1 antitrypsin deficiency testing in pulmonary function test (PFT) results. *COPD* 2009; 6:26–30.
12. **Campos M, Hagenlocker B, Martinez N, et al.** Impact of an electronic medical record clinical reminder to improve detection of COPD and alpha-1 antitrypsin deficiency in the Veterans Administration (VA) system (abstract). *Am J Respir Crit Care Med* 2011;183:A5356. www.atsjournals.org/doi/pdf/10.1164/ajrccm-conference.2011.183.1_MeetingAbstracts.A5356. Accessed May 24, 2016.
13. **Jain A, McCarthy K, Xu M, Stoller JK.** Impact of a clinical decision support system in an electronic health record to enhance detection of alpha(1)-antitrypsin deficiency. *Chest* 2011;140:198–204.
14. **American Thoracic Society, European Respiratory Society.** American Thoracic Society/European Respiratory Society statement: standards for the diagnosis and management of individuals with alpha-1 antitrypsin deficiency. *Am J Respir Crit Care Med* 2003; 168:818–900.
15. **Rahaghi FF, Sandhaus RA, Brantly ML, et al.** The prevalence of alpha-1 antitrypsin deficiency among patients found to have airflow obstruction. *COPD* 2012; 9:352–358.
16. **Carrell RW, Lomas DA.** Alpha1-antitrypsin deficiency—a model for conformational diseases. *N Engl J Med* 2002; 346:45–53.
17. **Stoller JK, Aboussouan LS.** A review of alpha1-antitrypsin deficiency. *Am J Respir Crit Care Med* 2012; 185:246–259.
18. **McElvane NG, Stoller JK, Buist AS, et al.** Baseline characteristics of enrollees in the National Heart, Lung and Blood Institute Registry of Alpha 1-Antitrypsin Deficiency. Alpha 1-Antitrypsin Deficiency Registry Study Group. *Chest* 1997; 111:394–403.
19. **Lomas DA, Evans DL, Finch JT, Carrell RW.** The mechanism of Z alpha 1-antitrypsin accumulation in the liver. *Nature* 1992; 357:605–607.
20. **Lomas DA, Finch JT, Seyama K, Nukiwa T, Carrell RW.** Alpha 1-antitrypsin Siiyama (Ser53→Phe). Further evidence for intracellular loop-sheet polymerization. *J Biol Chem* 1993; 268:15333–15335.
21. **Mayer AS, Stoller JK, Bucher Bartelson B, James Ruttenber A, Sandhaus RA, Newman LS.** Occupational exposure risks in individuals with Pi*Z alpha(1)-antitrypsin deficiency. *Am J Respir Crit Care Med* 2000; 162:553–558.
22. **Tan L, Dickens JA, Demeo DL, et al.** Circulating polymers in alpha1-antitrypsin deficiency. *Eur Respir J* 2014; 43:1501–1504.
23. **Parmar JS, Mahadeva R, Reed BJ, et al.** Polymers of alpha(1)-antitrypsin are chemotactic for human neutrophils: a new paradigm for the pathogenesis of emphysema. *Am J Respir Cell Mol Biol* 2002; 26:723–730.
24. **Molloy K, Hersh CP, Morris VB, et al.** Clarification of the risk of chronic obstructive pulmonary disease in alpha1-antitrypsin deficiency PiMZ heterozygotes. *Am J Respir Crit Care Med* 2014; 189:419–427.
25. **Parr DG, Stoel BC, Stolk J, Stockley RA.** Pattern of emphysema distribution in alpha1-antitrypsin deficiency influences lung function impairment. *Am J Respir Crit Care Med* 2004; 170:1172–1178.
26. **Sveger T.** Liver disease in alpha1-antitrypsin deficiency detected by screening of 200,000 infants. *N Engl J Med* 1976; 294:1316–1321.
27. **O'Brien ML, Buist NR, Murphey WH.** Neonatal screening for alpha1-antitrypsin deficiency. *J Pediatr* 1978; 92:1006–1010.
28. **Piitulainen E, Montero LC, Nystedt-Duzakin M, et al.** Lung function and CT densitometry in subjects with alpha-1-antitrypsin deficiency and healthy controls at 35 years of age. *COPD* 2015; 12:162–167.
29. **The Alpha-1-Antitrypsin Deficiency Registry Study Group.** Survival and FEV1 decline in individuals with severe deficiency of alpha1-antitrypsin. *Am J Respir Crit Care Med* 1998; 158:49–59.
30. **Dawkins PA, Dawkins CL, Wood AM, Nightingale PG, Stockley JA, Stockley RA.** Rate of progression of lung function impairment in

- alpha1-antitrypsin deficiency. *Eur Respir J* 2009; 33:1338–1344.
31. **Needham M, Stockley RA.** Alpha 1-antitrypsin deficiency. 3: clinical manifestations and natural history. *Thorax* 2004; 59:441–445.
 32. **Tomashefski JF Jr, Crystal RG, Wiedemann HP, Mascha E, Stoller JK.** The bronchopulmonary pathology of alpha-1 antitrypsin (AAT) deficiency: findings of the Death Review Committee of the National Registry for Individuals with Severe Deficiency of Alpha-1 Antitrypsin. *Hum Pathol* 2004; 35:1452–1461.
 33. **Tanash HA, Nilsson PM, Nilsson JA, Piitulainen E.** Clinical course and prognosis of never-smokers with severe alpha-1-antitrypsin deficiency (PiZZ). *Thorax* 2008; 63:1091–1095.
 34. **Walsh JW, Snider GL, Stoller JK.** A review of the Alpha-1 Foundation: its formation, impact, and critical success factors. *Respir Care* 2006; 51:526–531.
 35. **Rokadia HK, Stoller JK.** Surgical and bronchoscopic lung volume reduction treatment for a-1 antitrypsin deficiency. *Clin Pulm Med* 2015; 22:279–285.
 36. **Dirksen A, Piitulainen E, Parr DG, et al.** Exploring the role of CT densitometry: a randomised study of augmentation therapy in alpha1-antitrypsin deficiency. *Eur Respir J* 2009; 33:1345–1353.
 37. **Dirksen A, Dijkman JH, Madsen F, et al.** A randomized clinical trial of alpha(1)-antitrypsin augmentation therapy. *Am J Respir Crit Care Med* 1999; 160:1468–1472.
 38. **Gildea TR, Shermock KM, Singer ME, Stoller JK.** Cost-effectiveness analysis of augmentation therapy for severe alpha1-antitrypsin deficiency. *Am J Respir Crit Care Med* 2003; 167:1387–1392.
-
- ADDRESS:** James K. Stoller, MD, MS, Education Institute, NA2, Cleveland Clinic, 9500 Euclid Avenue, Cleveland, OH 44195; stollej@ccf.org