

Online Features

Access

Cleveland Clinic Journal of Medicine content is readily available to all and is free of charge at www.ccmj.org. On your first visit, we will ask you to take a few minutes to register, but subsequent visits will be unencumbered except for an occasional request for your e-mail address when you visit using another device (eg, mobile phone, tablet).

Services

- Navigate quickly to articles in current and past issues via links on the home page and pull-down menus at the top of the page. Use the search function to find a specific article, or browse by topic or article type.
- Continuing medical education activities are accessible from article links and from a CME pull-down menu on the home page. Participation is free.
- Follow links on the home page to news, summaries of recent scientific meetings, and interactive quizzes.
- Click on the PDF symbol at the top of any online article to read, download, or print the article in PDF format.

Social Networking

To post a *CCJM* article to Facebook or Twitter, just click on the icon at the top of any online article.

www.ccmj.org

TABLE OF CONTENTS

FROM THE EDITOR

When cold-induced vasospasm is the tip of the iceberg 739

For a minority of patients, Raynaud phenomenon may be the presenting sign of a systemic disorder.

B.F. MANDELL

THE CLINICAL PICTURE

Osborn waves of hypothermia 746

The differential diagnosis includes Brugada syndrome, hypercalcemia, and early repolarization syndrome.

P. AMBESH, G. HOLLANDER, AND J. SHANI

1-MINUTE CONSULT

Is pregnancy safe after kidney transplant? 750

Yes, but successful pregnancy requires a team approach, patient education, and counseling.

S. SHAH

THE CLINICAL PICTURE

Sarcoidosis mimicking lytic osseous metastases 753

Sarcoidosis involves the lung in more than 90% of cases; skeletal involvement has been reported in 1% to 14%.

A.M. BRANDY-GARCÍA, I. CABEZAS-RODRIGUEZ, L. CAMINAL-MONTERO, C. SUAREZ-CUERVO, AND P. REDONDO-BUIL

1-MINUTE CONSULT

Which patients with respiratory disease need long-term azithromycin? 755

Long-term use should be individualized, with benefits weighed against the risks and monitoring for adverse effects.

A. ALCHAKAKI, C. CRAMER, A. PATTERSON, AND A.O. SOUBANI

MEDICAL GRAND ROUNDS

Diabetes medications and cardiovascular outcome trials: Lessons learned 759

Drugs of several classes have demonstrated cardiovascular safety; empagliflozin carries a cardiovascular indication.

K.V. PATEL, N. DE ALBUQUERQUE ROCHA, AND D.K. MCGUIRE

CONTINUED ON PAGE 738

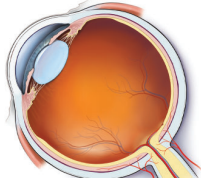
CONTINUED FROM PAGE 735

CME CREDIT **CARDIOLOGY TALL ROUNDS**.....
Navigating the anticoagulant landscape in 2017 768

What is the best strategy in acute venous thromboembolism? How should anticoagulation be managed before surgery?

J.D. DOUKETIS

CME CREDIT **IM BOARD REVIEW**.....
Acute monocular vision loss: Don't lose sight of the differential 779



An 83-year-old man woke up one morning unable to see out of his left eye; 6 hours earlier it had been normal.

J.R. ABBATEMARCO, R. PATELL, J. BUCCOLA, AND M.A. WILLIS

CME CREDIT **ADDRESSING DISPARITIES IN HEALTHCARE**.....
Disparities in cervical cancer in African American women: What primary care physicians can do 788

African American women are disproportionately affected, but equal access to care may eliminate most of the disparity.

C. ARVIZO AND H. MAHDI

EDITORIAL.....
Cervical cancer in African American women: Optimizing prevention to reduce disparities 795

Primary care providers play a crucial role in cancer control, including screening and follow-up.

A.D. MISRA-HEBERT

CME CREDIT **REVIEW**.....
Treating Raynaud phenomenon: Beyond staying warm 797

Avoidance of cold and stress are first-line measures, but if these fail, vasodilator agents are used.

S.C. SHAPIRO AND F.M. WIGLEY

DEPARTMENTS.....
CME Calendar 741

CME instructions 805

Upcoming Features

- Acute cardiorenal syndrome: A stepwise approach
- Perioperative risk: Which index is best?
- Angioplasty for stable angina: Why do we still do it?
- Chronic kidney disease in African Americans: The puzzle comes together
- Weight-loss drugs: What you need to know
- Idiopathic calciuria, kidney stones, and bone health
- Female athlete triad: Who to screen, what to ask
- High care-utilizers: Time to rethink
- Heart risk in the frail elderly: Individualized shared decisions

