

**KATHRYN BUX RODEMAN, MD**  
Endocrinology Fellow, Department of Metabolism, Endocrinology, and Diabetes, University of Michigan, Ann Arbor

**BETUL HATIPOGLU, MD**  
Department of Endocrinology, Diabetes, and Metabolism, Cleveland Clinic

# Beta-cell therapies for type 1 diabetes: Transplants and bionics

## ABSTRACT

Research continues toward the goal of treating type 1 diabetes by replacing insulin-producing beta cells. Ideally, such treatment would be safe and long-lasting and would eliminate the need for subcutaneous insulin replacement. This article reviews the current state of beta-cell replacement through transplant of the whole pancreas or of islet cells. It also looks at the “bionic” pancreas and other future challenges.

## KEY POINTS

Most pancreas transplant recipients become insulin-independent immediately.

A key drawback to islet transplant is the need for multiple donors to provide enough islet cells to achieve insulin independence.

As with other organs for transplant, the need for donor pancreases far outnumbers the supply. Stem cells or beta cells grown from stem cells may avoid this problem. Another potential solution is to use organs from animals, possibly pigs, but much more work is needed to make these procedures viable.

While we await a breakthrough in beta-cell therapy, a bionic pancreas may be the answer for a number of patients.

Dr. Hatipoglu has disclosed speaking and teaching for Merck.

doi:10.3949/ccjm.85a.17088

WITH INTENSIVE INSULIN REGIMENS and home blood glucose monitoring, patients with type 1 diabetes are controlling their blood glucose better than in the past. Nevertheless, glucose regulation is still imperfect and tedious, and striving for tight glycaemic control poses the risk of hypoglycemia.

A more physiologic approach would seem like a good idea, ie, replacing the insulin-producing beta cells, which are destroyed in an autoimmune process in type 1 diabetes. Immunosuppressive therapy and surgical technique have improved to the point that pancreas transplant is now an alternative to injectable insulin for patients receiving kidney transplants, patients with severe and frequent hyper- or hypoglycemic episodes, and those for whom insulin therapy has failed. In addition, researchers are studying the promising but challenging avenue of transplanting only the islets of Langerhans, which contain the beta cells, the glucagon-producing alpha cells, and other hormone-producing cells (Table 1).

Prominent among the challenges are the sheer numbers involved. Some 1.25 million Americans have type 1 diabetes, and another 30 million have type 2, but only about 7,000 to 8,000 pancreases are available for transplant each year.<sup>1</sup> While awaiting a breakthrough—perhaps involving stem cells, perhaps involving organs obtained from animals—an insulin pump may offer better diabetes control for many. Another possibility is a closed-loop system with a continuous glucose monitor that drives a dual-infusion pump, delivering insulin when glucose levels rise too high, and glucagon when they dip too low.

**TABLE 1**

**Pros and cons of beta-cell therapies**

	<b>Pros</b>	<b>Cons</b>
<b>Pancreas transplant</b>	Appropriate alternative to insulin for patients getting kidney transplant, failure of injectable insulin, or patients suffering from uncontrollable hyper- or hypoglycemia	Lifetime immunosuppression required Increased rate of death in the first 90 days after surgery
<b>Islet cell transplant</b>	Less invasive than pancreas transplant Less intensive immunosuppression needed than with pancreas transplant	Improvements are needed in harvesting islet cells and increasing survival of transplanted donor cells Need 2 to 4 donors per recipient Lifetime immunosuppression required
<b>Bionic pancreas</b>	No immunosuppression needed Electronic adjustment of insulin and glucagon prior to hypoglycemia without patient initiation Reduces hypoglycemia, stabilizes glucose levels	High cost of supplies and technology Not a biologic cure Needs human involvement to maintain

**1.25 million Americans with type 1 diabetes, 7,000–8,000 pancreases for transplant per year**

**■ DIABETES WAS KNOWN IN ANCIENT TIMES**

About 3,000 years ago, Egyptians described the syndrome of thirst, emaciation, and sweet urine that attracted ants. The term *diabetes* (Greek for *siphon*) was first recorded in 1425; *mellitus* (Latin for *sweet with honey*) was not added until 1675.

In 1857, Bernard hypothesized that diabetes was caused by overproduction of glucose in the liver. This idea was replaced in 1889, when Mering and Minkowski proposed the dysfunctional pancreas theory that eventually led to the discovery of the beta cell.<sup>2</sup>

In 1921, Banting and Best isolated insulin, and for the past 100 years subcutaneous insulin replacement has been the mainstay of treatment. But starting about 50 years ago, researchers have been looking for safe and long-lasting ways to replace beta cells and eliminate the need for exogenous insulin replacement.

**■ TRANSPLANTING THE WHOLE PANCREAS**

The first whole-pancreas transplant was performed in 1966 by Kelly et al,<sup>3</sup> followed by 13 more by 1973.<sup>4</sup> These first transplant grafts were short-lived, with only 1 graft surviving longer than 1 year. Since then, more than 12,000 pancreases have been transplanted worldwide, as refinements in surgical tech-

niques and immunosuppressive therapies have improved patient and graft survival rates.<sup>4</sup>

Today, most pancreas transplants are in patients who have both type 1 diabetes and end-stage renal disease due to diabetic nephropathy, and most receive both a kidney and a pancreas at the same time. Far fewer patients receive a pancreas after previously receiving a kidney, or receive a pancreas alone.

The bile duct of the transplanted pancreas is usually routed into the patient’s small intestine, as nature intended, and less often into the bladder. Although bladder drainage is associated with urinary complications, it has the advantage of allowing measurement of pancreatic amylase levels in the urine to monitor for graft rejection. With simultaneous pancreas and kidney transplant, the serum creatinine concentration can also be monitored for rejection of the kidney graft.

Current immunosuppressive regimens vary but generally consist of anti-T-cell antibodies at the time of surgery, followed by lifelong treatment with the combination of a calcineurin inhibitor (cyclosporine or tacrolimus) and an antimetabolite (mycophenolate mofetil or azathioprine).

Outcomes are good. The rates of patient and graft survival are highest with simultaneous pancreas-kidney transplant, and somewhat lower with pancreas-after-kidney and pancreas-alone transplant.

### Benefits of pancreas transplant

Most recipients can stop taking insulin immediately after the procedure, and their hemoglobin A<sub>1c</sub> levels normalize and stay low for the life of the graft. Lipid levels also decrease, although this has not been directly correlated with lower risk of vascular disease.<sup>4</sup>

Transplant also reduces or eliminates some complications of diabetes, including retinopathy, nephropathy, cardiomyopathy, and gastropathy.

For example, in patients undergoing simultaneous pancreas-kidney transplant, diabetic nephropathy does not recur in the new kidney. Fioretto et al<sup>5</sup> reported that nephropathy lesions reversed during the 10 years after pancreas transplant.

Kennedy et al<sup>6,7</sup> found that preexisting diabetic neuropathy improved slightly (although neurologic status did not completely return to normal) over a period of up to 42 months in a group of patients who received a pancreas transplant, whereas it tended to worsen in a control group. Both groups were assessed at baseline and at 12 and 24 months, with a subgroup followed through 42 months, and they underwent testing of motor, sensory, and autonomic function.<sup>6,7</sup>

### Disadvantages of pancreas transplant

Disadvantages of whole-pancreas transplant include hypoglycemia (usually mild), adverse effects of immunosuppression, potential for surgical complications including an increased rate of death in the first 90 days after the procedure, and cost.

In an analysis comparing the 5-year estimated costs of dialysis, kidney transplant alone from cadavers or live donors, or simultaneous pancreas-kidney transplant for diabetic patients with end-stage renal disease, the least expensive option was kidney transplant from a live donor.<sup>8</sup> The most expensive option was simultaneous pancreas-kidney transplant, but quality of life was better with this option. The analysis did not consider the potential cost of long-term treatments for complications related to diabetes that could be saved with a pancreas transplant.

Data conflict regarding the risk of death with different types of pancreas transplants. A retrospective cohort study of data from 124

US transplant centers reported in 2003 found higher mortality rates in pancreas-alone transplant recipients than in patients on a transplant waiting list receiving conventional therapy.<sup>9</sup> In contrast, a 2004 study reported that after the first 90 days, when the risk of death was clearly higher, mortality rates were lower after simultaneous pancreas-kidney transplant and pancreas-after-kidney transplant.<sup>10</sup> After pancreas-alone transplant, however, mortality rates were higher than with exogenous insulin therapy.

Although outcomes have improved, fewer patients with type 1 diabetes are undergoing pancreas transplant in recent years.

Interestingly, more simultaneous pancreas-kidney transplants are being successfully performed in patients with type 2 diabetes, who now account for 8% of all simultaneous pancreas-kidney transplant recipients.<sup>11</sup> Outcomes of pancreas transplant appear to be similar regardless of diabetes type.

### Bottom line

Pancreas transplant is a viable option for certain cases of complicated diabetes.

### ■ TRANSPLANTING ISLET CELLS

Despite its successes, pancreas transplant is major surgery and requires lifetime immunosuppression. Research is ongoing into a less-invasive procedure that, it is hoped, would require less immunosuppression: transplanting islets by themselves.

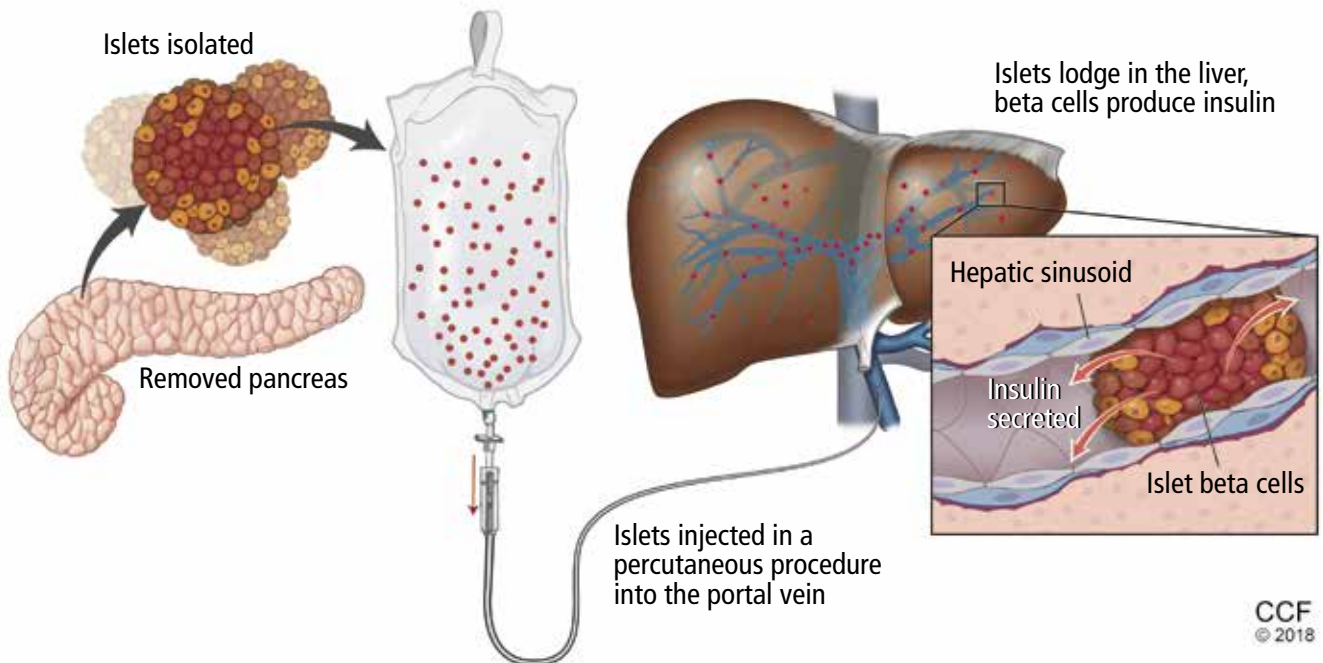
### Islet autotransplant after pancreatectomy

For some patients with chronic pancreatitis, the only option to relieve chronic pain, narcotic dependence, and poor quality of life is to remove the pancreas. In the past, this desperate measure would instantly and inevitably cause diabetes, but not anymore.

In the 1980s, about 13 years after islets were first isolated, researchers learned how to remove them from the discarded pancreas and give them back to the patient. Injected in a percutaneous procedure into the portal vein, the islets lodge in the liver and, amazingly, the beta cells in them keep producing insulin (**Figure 1**).

Alpha cells and glucagon are a different story; a complication of islet transplant is hypoglycemia. In 2016, Lin et al<sup>12</sup> reported

**Hemoglobin A<sub>1c</sub> levels normalize quickly and stay low after pancreas transplant**



**Figure 1.** Islet cell transplant. Islets can be isolated from the patient’s own pancreas (in the case of a patient with chronic pancreatitis undergoing pancreatectomy) or from a pancreas from a cadaver donor (in the case of a patient with diabetes) and injected into the portal vein. Lodged in the liver, the beta cells continue to produce insulin.

**Neuropathy improved slightly after transplant, but did not normalize**

spontaneous hypoglycemia in 6 of 12 patients who maintained insulin independence after autotransplant of islets. Although the transplanted islets had functional alpha cells that could in theory produce glucagon, as well as beta cells that produce insulin and C-peptide, apparently the alpha cells were not secreting glucagon in response to the hypoglycemia.

Location may matter. Gupta et al,<sup>13</sup> in a 1997 study in dogs, found that more hypoglycemia occurs if islets are autotransplanted into the liver than if they are transplanted into the peritoneal cavity. A possible explanation may have to do with the glycemic environment of the liver.

**Islet allotransplant**

Islets can also be taken from cadaver donors and transplanted into patients with type 1 diabetes, who do not have enough working beta cells.

Success of allotransplant increased after the publication of observational data from the program in Edmonton in Canada, in which 7 consecutive patients with type 1 diabetes achieved initial insulin independence after islet allotransplant using steroid-free immu-

nosuppression.<sup>14</sup> Six recipients required islets from 2 donors, and 1 required islets from 4 donors, so they all received large volumes of at least 11,000 islet equivalents (IEQ) per kilogram of body weight.

In a subsequent report from the same team,<sup>15</sup> 16 (44%) of 36 patients remained insulin-free at 1 year, and C-peptide secretion was detectable in 70% at 2 years. But despite the elevated C-peptide levels, only 5 patients remained insulin-independent by 2 years. Lower hemoglobin A<sub>1c</sub> levels and decreases in hypoglycemic events from baseline also were noted.

The Clinical Islet Transplantation Consortium (CITC)<sup>16</sup> and Collaborative Islet Transplant Registry (CITR)<sup>17</sup> were established in 2004 to combine data and resources from centers around the world, including several that specialize in islet isolation and purification. Currently, more than 80 studies are being conducted.

The CITC and CITR now have data on more than 1,000 allogeneic islet transplant recipients (islet transplant alone, after kidney transplant, or simultaneous with it). The pri-

mary outcomes are hemoglobin A<sub>1c</sub> levels below 7% fasting C-peptide levels 0.3 ng/mL or higher, and fasting blood glucose of 60 to 140 mg/dL with no severe hypoglycemic events. The best results for islet-alone transplant have been in recipients over age 35 who received at least 325,000 IEQs with use of tumor necrosis factor antagonists for induction and calcineurin inhibitors or mammalian target of rapamycin (mTOR) inhibitors for maintenance.<sup>17</sup>

The best success for islet-after-kidney transplant was achieved with the same protocol but with insulin given to the donor during hospitalization before pancreas procurement. For participants with favorable factors, a hemoglobin A<sub>1c</sub> at or below 6.5% was achieved in about 80% at 1 year after last infusion, with more than 80% maintaining their fasting blood glucose level goals. About 70% of these patients were insulin-independent at 1 year. Hypoglycemia unawareness resolved in these patients even 5 years after infusion. Although there were no deaths or disabilities related to these transplants, bleeding occurred in 1 of 15 procedures. There was also a notable decline in estimated glomerular filtration rates with calcineurin inhibitor-based immunosuppression.<sup>17</sup>

### Making islets go farther

One of the greatest challenges to islet transplant is the need for multiple donors to provide enough islet cells to overcome the loss of cells during transplant. Pancreases are already in short supply, and if each recipient needs more than 1, this makes the shortage worse. Some centers have achieved transplant with fewer donors,<sup>18,19</sup> possibly by selecting pancreases from young donors who had a high body mass index and more islet cells, and harvesting and using them with a shorter cold ischemic time.

The number of viable, functioning islet cells drastically decreases after transplant, especially when transplanted into the portal system. This phenomenon is linked to an instant, blood-mediated inflammatory reaction involving antibody binding, complement and coagulation cascade activation, and platelet aggregation. The reaction, part of the innate immune system, damages the islet cells and leads to insulin dumping and early graft loss

in studies in vitro and in vivo. Another factor affecting the survival of the graft cells is the low oxygen tension in the portal system.

For this reason, sites such as the pancreas, gastric submucosa, genitourinary tract, muscle, omentum, bone marrow, kidney capsule, peritoneum, anterior eye chamber, testis, and thymus are being explored.<sup>20</sup>

To create a more supportive environment for the transplanted cells, biotechnicians are trying to encapsulate islets in a semipermeable membrane that would protect them from the immune system while still allowing oxygen, nutrients, waste products, and, critically, insulin to diffuse in and out. Currently, no site or encapsulated product has been more successful than the current practice of implanting naked islets in the portal system.<sup>20</sup>

### Bottom line

Without advances in transplant sites or increasing the yield of islet cells to allow single-donor transplants, islet cell allotransplant will not be feasible for most patients with type 1 diabetes.

### Xenotransplant: Can pig cells make up the shortage?

Use of animal kidneys (xenotransplant) is a potential solution to the shortage of human organs for transplant.

In theory, pigs could be a source. Porcine insulin is similar to human insulin (differing by only 1 amino acid), and it should be possible to breed “knockout” pigs that lack the antigens responsible for acute humoral rejection.<sup>21</sup>

On the other hand, transplant of porcine islets poses several immunologic, physiologic, ethical, legal, and infectious concerns. For example, porcine tissue could carry pig viruses, such as porcine endogenous retroviruses.<sup>21</sup> And even if the pigs are genetically modified, patients will still require immunosuppressive therapy.

A review of 17 studies of pig islet xenotransplant into nonhuman primates found that in 5 of the studies (4 using diabetic primates) the grafts survived at least 3 months.<sup>22</sup> Of these, 1 study used encapsulation, and the rest used intensive and toxic immunosuppression.

More research is needed to make xenotransplant a clinical option.

**Without advances, islet cell transplant will not be feasible for most patients**

**Transplanting stem cells  
or beta cells grown from stem cells**

Stem cells provide an exciting potential alternative to the limited donor pool. During the past decade, several studies have shown success using human pluripotent stem cells (embryonic stem cells and human-induced pluripotent stem cells), mesenchymal stem cells isolated from adult tissues, and directly programmed somatic cells. Researchers have created stable cultures of pluripotent stem cells from embryonic stem cells, which could possibly be produced on a large scale and banked.<sup>23</sup>

Human pluripotent stem cells derived from pancreatic progenitors have been shown to mature into more functional, islet-like structures *in vivo*. They transform into subtypes of islet cells including alpha, beta, and delta cells, ghrelin-producing cells, and pancreatic polypeptide hormone-producing cells. This process takes 2 to 6 weeks. In mice, these cells have been shown to maintain glucose homeostasis.<sup>24</sup> Phase 1 and 2 trials in humans are now being conducted.

Pagliuca et al<sup>25</sup> generated functional human pancreatic beta cells *in vitro* from embryonic stem cells. Reznica et al<sup>24</sup> reversed diabetes with insulin-producing cells derived *in vitro* from human pluripotent stem cells. The techniques used in these studies contributed to the success of a study by Vegas et al,<sup>26</sup> who achieved successful long-term glycemic control in mice using polymer-encapsulated human stem cell-derived beta cells.

Reversal of autoimmunity is an important step that needs to be overcome in stem cell transplant for type 1 diabetes. Nikolic et al<sup>27</sup> have achieved mixed allogeneic chimerism across major histocompatibility complex barriers with nonmyeloablative conditioning in advanced-diabetic nonobese diabetic mice. However, conditioning alone (ie, without bone marrow transplant) does not permit acceptance of allogeneic islets and does not reverse autoimmunity or allow islet regeneration.<sup>28</sup> Adding allogeneic bone marrow transplant to conditioned nonobese diabetic mice leads to tolerance to the donor and reverses autoimmunity.

**THE 'BIONIC' PANCREAS**

While we wait for advances in islet cell transplant, improved insulin pumps hold promise.

One such experimental device, the iLet (Beta Bionics, Boston, MA), designed by Damiano et al, consists of 2 infusion pumps (1 for insulin, 1 for glucagon) linked to a continuous glucose monitor via a smartphone app.

The monitor measures the glucose level every 5 minutes and transmits the information wirelessly to the phone app, which calculates the amount of insulin and glucagon required to stabilize the blood glucose: more insulin if too high, more glucagon if too low. The phone transmits this information to the pumps.

Dubbed the “bionic” pancreas, this closed-loop system frees patients from the tasks of measuring their glucose multiple times a day, calculating the appropriate dose, and giving multiple insulin injections.

The 2016 summer camp study<sup>29</sup> followed 19 preteens wearing the bionic pancreas for 5 days. During this time, the patients had lower mean glucose levels and less hypoglycemia than during control periods. No episodes of severe hypoglycemia were recorded.

El-Khatib et al<sup>30</sup> randomly assigned 43 patients to treatment with either the bihormonal bionic pancreas or usual care (a conventional insulin pump or a sensor-augmented insulin pump) for 11 days, followed by 11 days of the opposite treatment. All participants continued their normal activities. The bionic pancreas system was superior to the insulin pump in terms of the mean glucose concentration and mean time in the hypoglycemic range ( $P < .0001$  for both results).

**Bottom line**

As the search continues for better solutions, advances in technology such as the bionic pancreas could provide a safer (ie, less hypoglycemic) and more successful alternative for insulin replacement in the near future. ■

**Transplant  
of pig islets  
poses  
immunologic,  
physiologic,  
ethical, legal,  
and infectious  
concerns**

REFERENCES

1. **American Diabetes Association.** Statistics about diabetes: overall numbers, diabetes and prediabetes. [www.diabetes.org/diabetes-basics/statistics/](http://www.diabetes.org/diabetes-basics/statistics/). Accessed November 6, 2018.
2. **Ahmed AM.** History of diabetes mellitus. *Saudi Med J* 2002; 23(4):373–378. PMID:11953758
3. **Kelly WD, Lillehei RC, Merkel FK, Idezuki Y, Goetz FC.** Allotransplantation of the pancreas and duodenum along with the kidney in diabetic nephropathy. *Surgery* 1967; 61:827–837. PMID: 5338113
4. **Sutherland DE, Gruessner RW, Dunn DL, et al.** Lessons learned from more than 1,000 pancreas transplants at a single institution. *Ann Surg* 2001; 233(4):463–501. PMID:11303130
5. **Fioretto P, Steffes MW, Sutherland DE, Goetz FC, Mauer M.** Reversal of lesions of diabetic nephropathy after pancreas transplantation. *N Engl J Med* 1998; 339(2):69–75. doi:10.1056/NEJM199807093390202
6. **Kennedy WR, Navarro X, Goetz FC, Sutherland DE, Najarian JS.** Effects of pancreatic transplantation on diabetic neuropathy. *N Engl J Med* 1990; 322(15):1031–1037. doi:10.1056/NEJM199004123221503
7. **Kennedy WR, Navarro X, Sutherland DE.** Neuropathy profile of diabetic patients in a pancreas transplantation program. *Neurology* 1995; 45(4):773–780. PMID:7723969
8. **Douzdjian V, Ferrara D, Silvestri G.** Treatment strategies for insulin-dependent diabetics with ESRD: a cost-effectiveness decision analysis model. *Am J Kidney Dis* 1998; 31(5):794–802. PMID:9590189
9. **Venstrom JM, McBride MA, Rother KI, Hirshberg B, Orchard TJ, Harlan DM.** Survival after pancreas transplantation in patients with diabetes and preserved kidney function. *JAMA* 2003; 290(21):2817–2823. doi:10.1001/jama.290.21.2817
10. **Gruessner RW, Sutherland DE, Gruessner AC.** Mortality assessment for pancreas transplants. *Am J Transplant* 2004; 4(12):2018–2026. doi:10.1111/j.1600-6143.2004.00667.x
11. **Redfield RR, Scalea JR, Odorico JS.** Simultaneous pancreas and kidney transplantation: current trends and future directions. *Curr Opin Organ Transplant* 2015; 20(1):94–102. doi:10.1097/MOT.0000000000000146
12. **Lin YK, Faiman C, Johnston PC, et al.** Spontaneous hypoglycemia after islet autotransplantation for chronic pancreatitis. *J Clin Endocrinol Metab* 2016; 101(10):3669–3675. doi:10.1210/jc.2016-2111
13. **Gupta V, Wahoff DC, Rooney DP, et al.** The defective glucagon response from transplanted intrahepatic pancreatic islets during hypoglycemia is transplantation site-determined. *Diabetes* 1997; 46(1):28–33. PMID:8971077
14. **Shapiro AM, Lakey JR, Ryan EA, et al.** Islet transplantation in seven patients with type 1 diabetes mellitus using a glucocorticoid-free immunosuppressive regimen. *N Engl J Med* 2000; 343(4):230–238. doi:10.1056/NEJM200007273430401
15. **Shapiro AM, Ricordi C, Hering BJ, et al.** International trial of the Edmonton protocol for islet transplantation. *N Engl J Med* 2006; 355(13):1318–1330. doi:10.1056/NEJMoa061267
16. **Clinical Islet Transplantation (CIT) Consortium.** [www.citistudy.org](http://www.citistudy.org). Accessed November 6, 2018.
17. **Collaborative Islet Transplantation Registry (CITR).** CITR 10th Annual Report. [https://citregistry.org/system/files/10th\\_AR.pdf](https://citregistry.org/system/files/10th_AR.pdf). Accessed November 6, 2018.
18. **Hering BJ, Kandaswamy R, Harmon JV, et al.** Transplantation of cultured islets from two-layer preserved pancreases in type 1 diabetes with anti-CD3 antibody. *Am J Transplant* 2004; 4(3):390–401. PMID:14961992
19. **Posselt AM, Bellin MD, Tavakol M, et al.** Islet transplantation in type 1 diabetics using an immunosuppressive protocol based on the anti-LFA-1 antibody efalizumab. *Am J Transplant* 2010; 10(8):1870–1880. doi:10.1111/j.1600-6143.2010.03073.x
20. **Cantarelli E, Piemonti L.** Alternative transplantation sites for pancreatic islet grafts. *Curr Diab Rep* 2011; 11(5):364–374. doi:10.1007/s11892-011-0216-9
21. **Cooper DK, Gollackner B, Knosalla C, Teranishi K.** Xenotransplantation—how far have we come? *Transpl Immunol* 2002; 9(2–4):251–256. PMID:12180839
22. **Marigliano M, Bertera S, Grupillo M, Trucco M, Bottino R.** Pig-to-nonhuman primates pancreatic islet xenotransplantation: an overview. *Curr Diab Rep* 2011; 11(5):402–412. doi:10.1007/s11892-011-0213-z
23. **Bartlett ST, Markmann JF, Johnson P, et al.** Report from IPITA-TTS opinion leaders meeting on the future of beta-cell replacement. *Transplantation* 2016; 100(suppl 2):S1–S44. doi:10.1097/TP.0000000000001055
24. **Rezania A, Bruin JE, Arora P, et al.** Reversal of diabetes with insulin-producing cells derived in vitro from human pluripotent stem cells. *Nat Biotechnol* 2014; 32(11):1121–1133. doi:10.1038/nbt.3033
25. **Pagliuca FW, Millman JR, Gurtler M, et al.** Generation of functional human pancreatic beta cells in vitro. *Cell* 2014; 159(2):428–439. doi:10.1016/j.cell.2014.09.040
26. **Vegas AJ, Veisoh O, Gurtler M, et al.** Long-term glycemic control using polymer-encapsulated human stem cell-derived beta cells in immune-competent mice. *Nat Med* 2016; 22(3):306–311. doi:10.1038/nm.4030
27. **Nikolic B, Takeuchi Y, Leykin I, Fudaba Y, Smith RN, Sykes M.** Mixed hematopoietic chimerism allows cure of autoimmune tolerance and reversal of autoimmunity. *Diabetes* 2004; 53(2):376–383. PMID:14747288
28. **Li HW, Sykes M.** Emerging concepts in hematopoietic cell transplantation. *Nat Rev Immunol* 2012; 12(6):403–416. doi:10.1038/nri3226
29. **Russell SJ, Hillard MA, Balliro C, et al.** Day and night glycaemic control with a bionic pancreas versus conventional insulin pump therapy in preadolescent children with type 1 diabetes: a randomized crossover trial. *Lancet Diabetes Endocrinol* 2016; 4(3):233–243. doi:10.1016/S2213-8587(15)00489-1
30. **El-Khatib FH, Balliro C, Hillard MA, et al.** Home use of a bi-hormonal bionic pancreas versus insulin pump therapy in adults with type 1 diabetes: a multicenter randomized crossover trial. *Lancet* 2017; 389(10067):369–380. doi:10.1016/S0140-6736(16)32567-3

ADDRESS: Kathryn Bux Rodeman, MD, Department of Metabolism, Endocrinology, and Diabetes, University of Michigan Medical Center, 1500 East Medical Center Drive, Ann Arbor, MI 48109; [kathrynbux@gmail.com](mailto:kathrynbux@gmail.com)