

TABLE OF CONTENTS

FROM THE EDITOR

The tests that we order define us **150**

In practice we balance the inputs from Watson, “Dr. Google,” our experience, and the specific data from the patient.

B.F. MANDELL

COMMENTARY

**Cancer screening:
A modest proposal for prevention** **157**

Large-scale cancer screening programs have the unintended consequences of false-positive results and overdiagnosis.

M.S. KIM, G. NISHIKAWA, AND V. PRASAD

THE CLINICAL PICTURE

**Flu or strep?
Rapid tests can mislead** **161**

Group A streptococci are common colonizers with viral pharyngitis.

B.A. CUNHA AND N. OSAKWE

THE CLINICAL PICTURE

Norwegian scabies **163**

Norwegian scabies is extremely contagious, and outbreaks can spread in institutions.

H. MATSUURA, A. SENOO, M. SAITO, AND Y. FUJIMOTO

1-MINUTE CONSULT

**Does early repolarization on ECG increase
the risk of cardiac death in healthy people?** **165**

No. In patients without symptoms, early repolarization is nearly always a benign incidental finding.

Z. SAYEDAHMAD, F. DARMOCH, Y. AL-KHADRA, A. KABACH, AND M.C. ALRAIES

REVIEW



**Three neglected numbers in the CBC:
The RDW, MPV, and NRBC count** **167**

These values have diagnostic utility and potential prognostic significance.

J.E. MAY, M.B. MARQUES, V.V.B. REDDY, AND R. GANGARAJU

CONTINUED ON PAGE 148



Online Features

Access

Cleveland Clinic Journal of Medicine content is readily available to all and is free of charge at www.ccjm.org.

Services

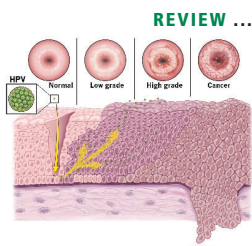
- Navigate quickly to articles in current and past issues via links on the home page and pull-down menus at the top of the page. Use the search function to find a specific article, or browse by topic or article type.
- Continuing medical education and maintenance of certification activities are accessible from article links and from a CME pull-down menu on the home page. Participation is free.
- Follow links on the home page to news, summaries of recent scientific meetings, and interactive quizzes.
- Click on the PDF symbol at the top of any online article to read, download, or print the article in PDF format.

Social Networking

To post a *CCJM* article to Facebook or Twitter, just click on the icon at the top of any online article.

www.ccjm.org

CONTINUED FROM PAGE 146



REVIEW **CME MOC ACCREDITED** **173**

Human papillomavirus in 2019: An update on cervical cancer prevention and screening guidelines

Recommendations on counseling, vaccination, screening, and follow-up for abnormal screening results.

S. ZHANG AND P. BATUR

REVIEW **CME MOC ACCREDITED** **179**

Assessing liver fibrosis without biopsy in patients with HCV or NAFLD

Biopsy is still the gold standard, but methods based on clinical information and on imaging are emerging.

T. SINGH, D.S. ALLENDE, AND A.J. McCULLOUGH

SYMPTOMS TO DIAGNOSIS **CME MOC ACCREDITED** **187**

A paraneoplastic potassium and acid-base disturbance

A 55-year-old smoker with COPD presents with malaise, paresthesias, and severe hypertension. What is the cause?

S.P. WILES, M. KICZEK, AND G.W. RUTECKI

REVIEW **CME MOC ACCREDITED** **198**

Laboratory tests in rheumatology: A rational approach

Negative results are not always reassuring, and false-positive results pose risks.

E. SURESH

DEPARTMENTS

Correction **210**

The article Aleyadeh W, Hutt-Centeno E, Ahmed HM, Shah NP. Hypertension guidelines: treat patients, not numbers. *Cleve Clin J Med* 2019; 86(1):47–56. doi:10.3949/ccjm.86a.18027 contained an error.

From the *Cleveland Clinic Journal of Medicine* 151

CME Calendar **151**

CME/MOC Instructions **211**

Upcoming Features

- Spontaneous coronary artery dissection
- Postural tachycardia: Evaluation and management
- Is neuroimaging necessary to evaluate syncope?
- Type 2 diabetes: Toward precision care
- Acute kidney injury after arthroplasty
- Sleep apnea after stroke
- Colorectal cancer screening: FIT vs colonoscopy
- Giant cell arteritis: Update on an old disease
- Anti-Xa assays to guide heparin therapy
- Can procalcitonin guide decisions about antibiotics?



CLEVELAND CLINIC JOURNAL OF MEDICINE