

TABLE OF CONTENTS

FROM THE EDITOR

An unending ode to pneumonia 127

The examination, history, and sometimes, sputum Gram stain and culture results still inform our clinical judgment.

Brian F. Mandell, MD, PhD

THE CLINICAL PICTURE.....

Acute lymphangitis 129

Linear erythematous streaks sometimes spread with remarkable speed—within a few hours.

Yasuhiro Kano, MD; Takashi Momose, MD

THE CLINICAL PICTURE.....

Posterior reversible encephalopathy syndrome 131

On day 4, his blood pressure was 209/93 mm Hg, and CT showed new vasogenic edema in both occipital lobes.

Balaj Rai, MD; Robert M. Black, MD; Vinit Gilvaz, MD

THE CLINICAL PICTURE.....

Leukoplakia of the tongue 133

This potentially premalignant lesion is found mostly in middle-aged and older men who smoke.

Keiichi Ohta, DDS; Hitoshi Yoshimura, DDS, PhD

COMMENTARY

Mitral valve prolapse and sudden cardiac death: A perspective on risk-stratification 136

Mitral valve prolapse is common, but sudden cardiac death is rare. How can we stratify risk?

Aaron A.H. Smith, MD; Omer J. Iqbal, MD, FHRS

SYMPTOMS TO DIAGNOSIS **CME MOC**

Gastroenteritis gone rogue 139

A 56-year-old woman presented with 2 weeks of vomiting and diarrhea. Her troubles were just beginning.

Jason Russ, MD; Areeba Kara, MD, MS, FACP, SFHM

CONTINUED ON PAGE 126



Online Features

Access

Cleveland Clinic Journal of Medicine content is readily available to all and is free of charge at www.ccjm.org.

Services

- Navigate quickly to articles in current and past issues via links and pull-down menus at the top of the home page. Use the search function to find a specific article, or use the pull-down content menu to browse articles.
- Continuing medical education and maintenance of certification activities are accessible from the CME/MOC pull-down menu on the home page. Participation is free.
- Follow links on the home page to a calendar of upcoming CME events.
- Click on the PDF symbol at the top of any online article to read, download, or print the article in PDF format.

Social Networking

To post a *CCJM* article to Facebook or Twitter, just click on the icon at the top of any online article.

www.ccjm.org

CONTINUED FROM PAGE 124

REVIEW **CME | MOC**

Community-acquired pneumonia: Strategies for triage and treatment **145**

Not all patients need to be hospitalized. Initial empiric treatment should be de-escalated as soon as possible.

Anita R. Modi, MD; Christopher S. Kovacs, MD

REVIEW **CME | MOC**

Severe megaloblastic anemia: Vitamin deficiency and other causes **153**

Determining the underlying cause and initiating prompt treatment are critical.

Daniel S. Socha, MD; Sherwin I. DeSouza, MD; Aron Flagg, MD; Mikkael Sekeres, MD, MS; Heesun J. Rogers, MD, PhD

REVIEW **CME | MOC**



Restrictive eating disorders in previously overweight adolescents and young adults **165**

Some patients with restrictive eating disorders are hiding in plain sight.

Radhika Rastogi, BA; Ellen S. Rome, MD, MPH

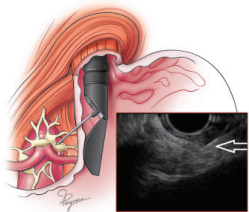
EDITORIAL

Atypical anorexia nervosa can be just as bad **172**

Eating disorders can occur in patients with a wide variety of weights.

Neville H. Golden, MD; Philip S. Mehler, MD

REVIEW



Endoscopic ultrasonography: An inside view **175**

Endoscopic ultrasonography has evolved from a diagnostic tool to a therapeutic procedure for a wide range of conditions.

C. Roberto Simons-Linares, MD; Praneet Wander, MD; John Vargo MD; Prabhleen Chahal, MD

DEPARTMENTS

CME Calendar **138**

Our Peer-Reviewers for 2019 **184**

CME/MOC Instructions **Inside back cover**

Upcoming Features

- **Migraine drugs: The old and the new**
- **Bronchoscopic lung reduction for emphysema**
- **DXA scans after menopause**
- **ACC/AHA guidelines for lipids and primary prevention**
- **Steroid-associated bone loss**
- **Perinatal depression**
- **Cancer-associated thrombosis: Predict, prevent, treat**
- **Medical problems of anorexia**
- **Recurrent *C difficile* infection: Recognize, manage, prevent**
- **GERD: A practical approach**



CLEVELAND CLINIC JOURNAL OF MEDICINE