

Andrew Young, DO
Department of Internal Medicine,
Cleveland Clinic

Mythri Anil Kumar, MD
Department of Gastroenterology and
Hepatology, Cleveland Clinic

Prashanthi N. Thota, MD, FACP
Medical Director, Esophageal Center, Digestive Disease
and Surgery Institute, Cleveland Clinic; Clinical Assistant
Professor, Cleveland Clinic Lerner College of Medicine of
Case Western Reserve University, Cleveland, OH

GERD: A practical approach

ABSTRACT

Gastroesophageal reflux disease (GERD) is mainly a clinical diagnosis based on typical symptoms of heartburn and acid regurgitation. Current guidelines indicate that patients with typical symptoms should first try a proton pump inhibitor (PPI). If reflux symptoms persist after 8 weeks on a PPI, endoscopy of the esophagus is recommended, with biopsies taken to rule out eosinophilic esophagitis. This review discusses the evidence for different medical, endoscopic, and surgical therapies and presents a management algorithm.

KEY POINTS

The diagnosis of GERD is mainly symptom-based and often does not require endoscopic confirmation.

Endoscopy is warranted in patients with red-flag symptoms such as dysphagia, anemia, weight loss, bleeding, and recurrent vomiting.

PPIs are the first-line medical therapy. Histamine 2 receptor antagonists are mainly used to treat breakthrough nocturnal symptoms.

Endoscopic and surgical options exist but are pursued only if medical therapy fails.

GASTROESOPHAGEAL REFLUX DISEASE (GERD) is common, accounting for more than 5.6 million physician visits each year.¹ From 10% to 20% of adults in Western countries and nearly 5% of those in Asia experience GERD symptoms at least weekly.² The prevalence of GERD symptoms is increasing by about 4% per year, in parallel with increases in obesity rates and reduction in prevalence of *Helicobacter pylori* over the past several decades.³ However, patients may not have symptoms of GERD even if they have objective evidence of it such as erosive esophagitis or Barrett esophagus.⁴

In 2015, the total direct economic impact of GERD and its complications was estimated to be over \$18 billion, with use of proton pump inhibitors (PPIs) accounting for \$12.4 billion, while the indirect costs driven by decreased work productivity were as much as \$75 billion.^{1,5}

■ TROUBLESOME SYMPTOMS, COMPLICATIONS

An international consensus group has defined GERD as a condition that develops when reflux of stomach contents causes troublesome symptoms with or without complications.⁶ Typical symptoms that lead to the diagnosis of GERD are regurgitation and heartburn. As much as 16% of the US population complains of regurgitation, and 6% report clinically troublesome heartburn.⁷ However, while these symptoms are specific for the disease, they are insensitive markers of reflux.

GERD symptoms can worsen with lying recumbent, especially after meals.

Of note, dysphagia can be a symptom of uncomplicated GERD, but its presence warrants more intensive examination and potential in-

Managing gastroesophageal reflux disease

Alarm symptoms:

Dysphagia, odynophagia, bleeding, anemia, weight loss, early satiety, vomiting

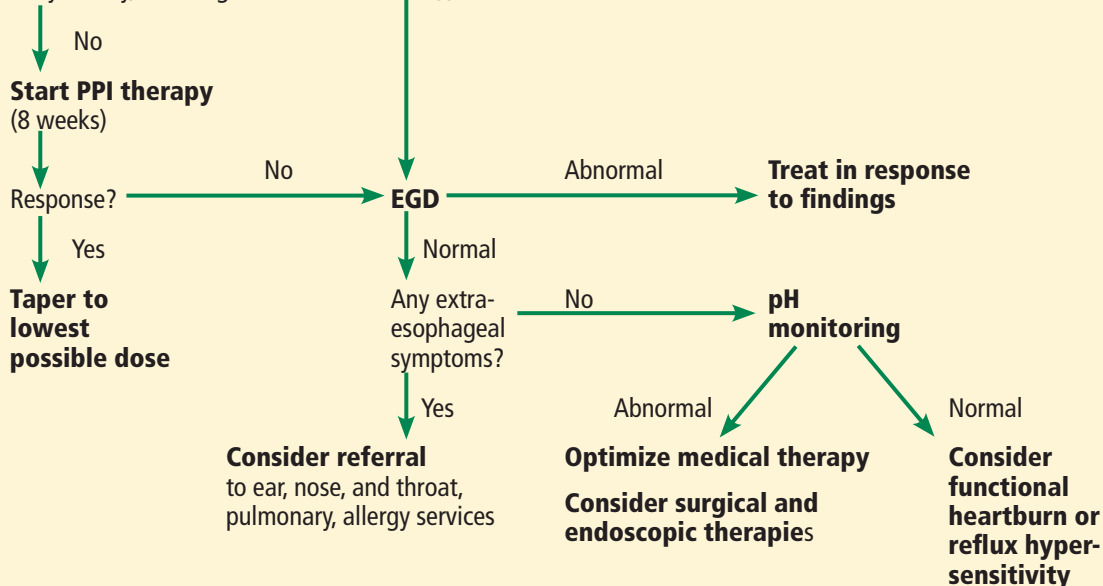


Figure 1. Approach to gastroesophageal reflux disease (PPI = proton pump inhibitor, EGD = esophagogastroduodenoscopy).

In patients with chest pain, rule out heart disease before considering a diagnosis of GERD

tervention, as it can be caused by strictures, rings, malignancy, or esophageal dysmotility.

Chest pain is another symptom often associated with GERD, but a cardiac cause should be considered and ruled out before GERD is considered.

Other symptoms of GERD include dyspepsia, nausea, bloating, sore throat, globus sensation, and epigastric pain.

A systematic review discovered that symptoms of GERD are less frequent in the elderly.⁸ However, on average, the severity of disease in the elderly was found to be greater than that in younger patients. Therefore, it was concluded that while the prevalence of documented GERD in older patients is less than that in younger patients, the actual rate of GERD is likely similar.

A subset of patients has extraesophageal symptoms of GERD such as asthma, laryngitis, pharyngitis, chronic cough, sinusitis, idiopathic pulmonary fibrosis, dental erosions, and recurrent otitis media.⁶

■ PATHOPHYSIOLOGY

Since GERD was first described in 1879 by Heinrich Quincke, our understanding of its pathophysiology has slowly expanded and evolved.⁹ Factors now known to contribute to GERD include:

- Transient lower esophageal sphincter (LES) relaxation
- Sliding hiatal hernia
- Low LES pressure
- Acid pocket development due to poor mixing of acid with chyme in the proximal stomach
- Increased gastroesophageal junction distensibility
- Obesity
- Delayed gastric emptying.⁹

Most symptoms are caused by acid reflux, but if symptoms persist on PPI therapy, they are likely due to either weakly acidic or weakly alkaline secretions.^{10,11}

The distance up the esophagus that the reflux travels also plays a role in the symptoms of GERD. Acid reflux episodes that extend

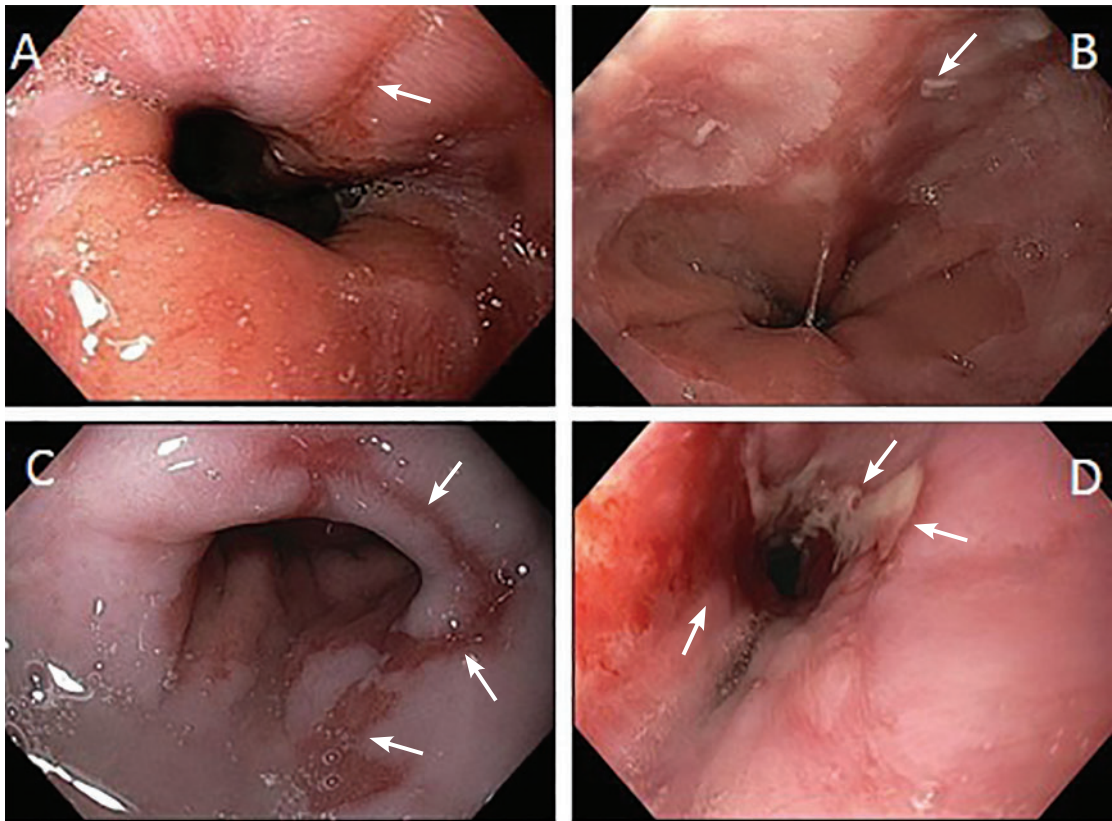


Figure 2. Endoscopic views of esophagitis grades. (A) Grade A—1 or more mucosal breaks (arrow) no longer than 5 mm that do not extend between the tops of two mucosal folds. (B) Grade B—1 or more mucosal breaks (arrow) longer than 5 mm that do not extend between the tops of two mucosal folds. (C) Grade C—1 or more mucosal breaks (arrows) that are continuous between the tops of 2 or more mucosal folds, but involve less than 75% of the circumference. (D) Grade D—1 or more mucosal breaks (arrows) that involve at least 75% of the esophageal circumference.

Alarm symptoms include dysphagia, anemia, weight loss, bleeding, and recurrent vomiting

higher into the esophagus are associated with worse symptoms, regardless of the acidity of the bolus.^{12,13}

Trimble et al¹³ found that patients with GERD have enhanced esophageal sensation and likely have heightened perceptions of normal nonacidic reflux events due to lower sensory thresholds. Another hypothesis is that sustained esophageal longitudinal muscle contractions may lead to transient ischemia of the esophageal wall, resulting in GERD symptoms in some patients.¹⁴

■ DIAGNOSIS AND MANAGEMENT

GERD is mainly a clinical diagnosis based on typical symptoms. Its diagnosis and management are summarized in **Figure 1**.

If no alarm symptoms, first try a PPI

Current guidelines indicate that patients with typical symptoms should first be given a trial of PPI treatment.¹⁵ However, patients with alarm symptoms including dysphagia, anemia, weight loss, bleeding, and recurrent vomiting should proceed directly to upper endoscopy.

There are limitations to this approach: a meta-analysis showed that a short course of PPI therapy has a 78% sensitivity and 54% specificity in accurately diagnosing GERD.¹⁶ In general, if typical symptoms resolve with an initial trial of a PPI, GERD should be diagnosed and the patient should continue taking a PPI daily.

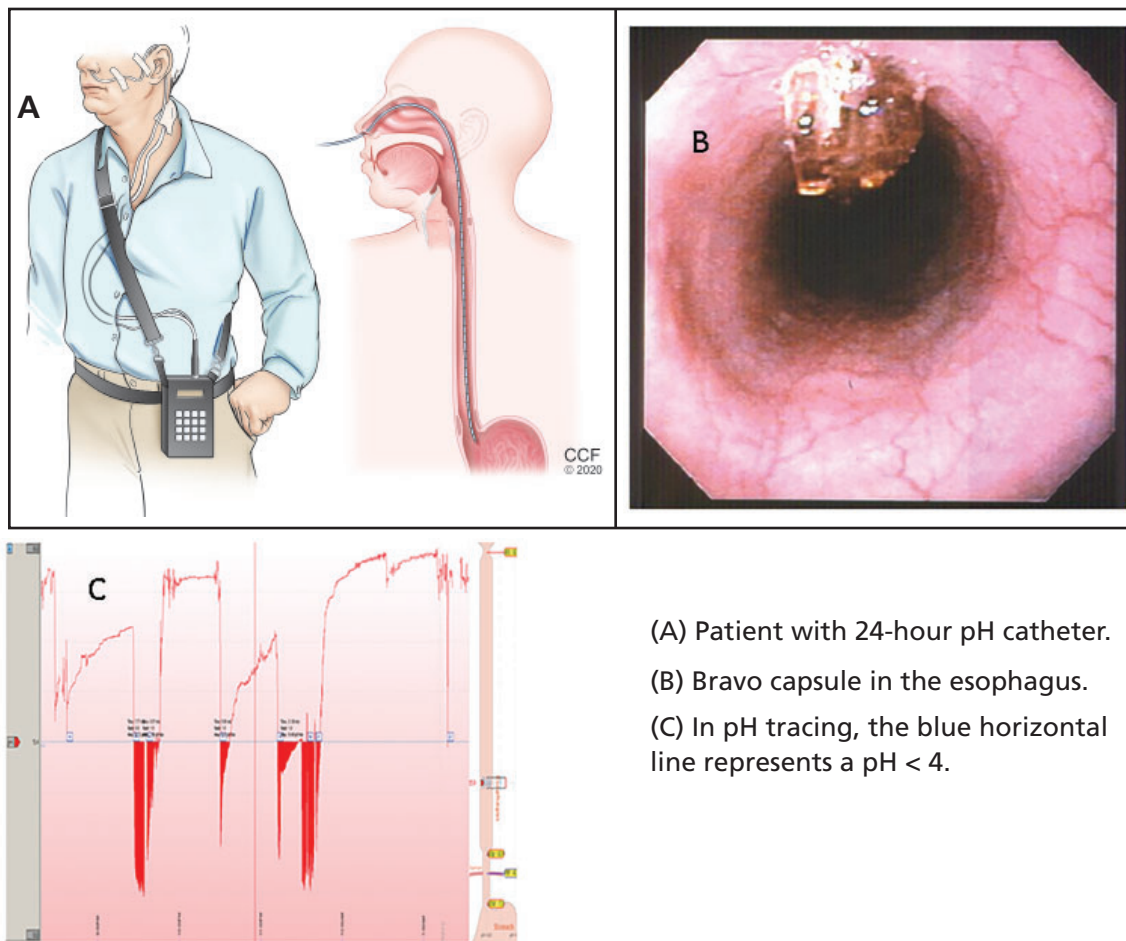


Figure 3.

- (A) Patient with 24-hour pH catheter.
 (B) Bravo capsule in the esophagus.
 (C) In pH tracing, the blue horizontal line represents a pH < 4.

**Give PPIs
 30–60 minutes
 before a meal
 for optimal
 pH control**

Heartburn? Or heart attack?

In patients with chest pain, a cardiac condition should be ruled out before considering GERD. In one study,¹⁷ patients with noncardiac chest pain and endoscopic evidence of GERD had a significant response to PPI therapy, while those without endoscopic evidence had little or no response to therapy.¹⁷

Upper endoscopy

Endoscopy should be performed in any patient with the alarm symptoms described above, and also in patients whose symptoms do not respond to a PPI.

Abnormal endoscopic findings in GERD may include erosive esophagitis, strictures, and Barrett esophagus. However, many patients with GERD have normal findings on endoscopy. In 1999, the Los Angeles classification system was published and is now

the standard method for classifying esophagitis (Figure 2).^{18,19} In addition, during endoscopy, biopsy samples from the esophagus should be obtained to rule out eosinophilic esophagitis.

Esophageal pH monitoring

Esophageal pH monitoring is indicated in patients with persistent symptoms and normal findings on endoscopy before surgical or endoscopic interventions are considered. Esophageal pH monitoring can be done using a 24-hour transnasal pH or pH-impedance catheter or a 48-hour Bravo wireless capsule.

In clinical practice, pH testing is performed with the patient off PPI therapy when there is low clinical suspicion for GERD, whereas pH-impedance testing is performed while the patient is still on PPI therapy when there is higher likelihood of GERD, to evaluate refractory symptoms (Figure 3).²⁰

Barium esophagography is not indicated in the workup of reflux disease as it has poor sensitivity and specificity for GERD.

■ TREATMENT: LIFESTYLE, DRUG THERAPY, SURGERY

Lifestyle modifications

Lifestyle modifications are the first option for most patients.

Weight loss can help reduce and eliminate GERD symptoms. A prospective cohort study found that 81% of obese patients who completed a structured weight loss program had a reduction in symptoms, and 65% had complete resolution of symptoms.²¹ Another large retrospective study, with more than 15,000 patients, showed an association between improvement in GERD symptoms and reduction in body mass index (BMI) in obese patients who lost at least 2 kg/m² in BMI (odds ratio 2.34).²²

Diet, smoking cessation, alcohol moderation. Numerous studies have aimed to find foods that exacerbate reflux symptoms. Historically, patients have been advised to avoid smoking, chocolate, carbonated beverages, spicy food, fatty food, alcohol, and large meals. Thus far, no study has found improvement in GERD symptoms with cessation of either smoking or alcohol. In terms of food consumption, no food has been conclusively linked with increased GERD symptoms. No consistent associations have been established between GERD symptoms and fatty food, spicy food, coffee, carbonated beverages, chocolate, citrus, or mint.

Sleep position. Other studies have promoted elevating the head of the bed, sleeping in the left decubitus position, and, in those with nocturnal GERD symptoms, avoiding meals in the 2 to 3 hours before bedtime.^{23,24} A sleep positional therapy device has been shown to reduce acid exposure times and improve nocturnal reflux symptoms.^{25,26} This device places the user in the left decubitus position at an incline and has been an effective tool for those with nocturnal symptoms.

Drug therapy

If lifestyle interventions fail, drug treatment options are PPIs, histamine 2 receptor antagonists (H2RAs), and antacids.

PPIs are considered the therapy of choice for symptomatic relief and healing of erosive esophagitis. Compared with H2RAs, PPIs have been shown to provide improved healing rates and fewer relapses in patients with erosive esophagitis.²⁷ To date, no study has shown a major difference in symptom control between the multiple PPIs. However, esomeprazole was shown, in a meta-analysis comparing it with other PPIs, to increase the probability of healing erosive esophagitis at 4 and 8 weeks.²⁸

PPIs inhibit gastric acid secretion by inactivating the hydrogen potassium ATPase molecules of the parietal cell. Optimal acid suppression occurs when the proton pumps are activated as the parietal cell is maximally stimulated after a meal.

All PPIs should be taken 30 to 60 minutes before a meal for optimal pH control except dexlansoprazole, which employs dual delayed-release technology leading to sustained plasma drug concentrations; it can therefore be taken at any time of day. For patients with daytime symptoms, a PPI should be taken once daily in the morning, and for nighttime symptoms, the dose should be taken in the evening.

After the initial 8-week course of therapy, most patients with GERD should attempt to take the lowest dose required to manage their symptoms. For some, this could mean only taking the medication when symptoms arise. However, patients with severe erosive esophagitis (grade C or D), Barrett esophagus, and peptic strictures need long-term PPI treatment.

Adverse effects of PPIs. All patients need to be counseled about possible long-term adverse effects of PPIs.²⁹ However, a recent randomized controlled trial found no association of PPIs with any adverse event when used for 3 years, with the possible exception of an increased risk of enteric infections.³⁰

Vaezi et al²⁹ reviewed the complications of PPI therapy and listed the relative risk and absolute excess risk in randomized controlled trials. From their data, we have calculated the number needed to harm, ie, the number of patients who would need to be treated for 1 year to observe 1 adverse effect:

- Chronic kidney disease, 333–1,000
- Dementia, 67–1,429

If lifestyle interventions fail, drug treatment options are PPIs, H2RAs, and antacids

- Bone fracture, 200–1,000
- *Campylobacter* or *Salmonella* infection, 500–3,333
- Spontaneous bacterial peritonitis (in patients with cirrhosis and ascites), 6–33
- *Clostridioides difficile* infection, 1,111–no association
- Micronutrient deficiencies, 250–333.

The authors found no association between long-term PPI use and the following:

- Myocardial infarction
- Small intestinal bacterial overgrowth
- Pneumonia
- Gastrointestinal malignancies.

Compared with earlier drugs, PPIs have been consistently shown to be superior at healing erosive esophagitis and relieving symptoms. PPIs can maintain intragastric pH higher than 4 for 15 to 21 hours daily, compared with the 8 hours that H2RAs can achieve.³¹ In a randomized trial, endoscopic remission of erosive esophagitis was found in 80.2% of those taking omeprazole 20 mg daily vs 39.4% in those taking ranitidine 150 mg daily.²⁷

H2RAs appear useful in GERD for controlling nocturnal acid breakthrough. However, tachyphylaxis to these drugs develops rapidly, and they may therefore have a role only if used intermittently.³²

Antacids, especially when combined with alginate preparations, are effective for reducing postprandial esophageal acid exposure.³³

If first-line therapy fails

PPIs have immensely changed the landscape of treatment for GERD since their introduction, but up to 40% of patients with GERD find partial or no symptom relief with first-line therapies.³⁴ In these nonresponders, it is important to determine compliance with PPIs, specifically the timing in relation to meals.

An 8-week course of therapy is needed to allow for healing, and patients should not be considered nonresponders until after this period unless alarm symptoms are present. For these patients, upper endoscopy should be performed within 2 weeks. For those without alarm symptoms but continued reflux in spite of therapy, endoscopy should be performed after 8 weeks, with biopsies of the esophagus to evaluate for eosinophilic esophagitis.

Esophageal impedance and pH testing are

performed on these non- and partial responders while off PPIs to determine if there is persistent acidic or nonacidic reflux.

If results of pH and impedance testing are normal, the most common causes of continued symptoms are reflux hypersensitivity and functional heartburn. Reflux hypersensitivity is a heightened response to nonpathologic reflux, while functional heartburn is the presence of symptoms without any evidence of abnormal exposure. These patients should be reassured that their condition is benign, and they can be started on a pain modulator such as a selective serotonin reuptake inhibitor, serotonin-norepinephrine reuptake inhibitor, or tricyclic antidepressant.

If PPIs give partial relief, they should be continued, but they can be stopped for patients who have no response to them.

In patients found to have nonacid reflux, a trial of baclofen should be offered, as it has been shown to reduce the rate of lower esophageal sphincter transient relaxations.³⁵

Alternative and investigational therapies

Alternative therapies are being investigated, but none have consistently shown significant benefits over placebo.

Therapies under investigation include reflux inhibitors, prokinetics, acupuncture, and hypnotherapy. Prokinetics, including metoclopramide and domperidone, have shown benefit in select patients with GERD but have been limited in their use due to associated central nervous system side effects and QT prolongation. New medical treatments for GERD on the horizon include potassium competitive acid blockers (vonoprazan) and bile acid sequestrant (IW3718) that binds to bile in the refluxate.

■ SURGICAL THERAPIES

Nissen fundoplication, first performed by Dr. Rudolph Nissen in 1955, gained popularity in the 1970s and is now the most widely performed antireflux surgery. It involves reducing the hiatal hernia and wrapping the gastric fundus partially or completely around the lower esophagus to restore the LES barrier.

Indications for the procedure are presence of a large hiatal hernia, reflux esophagitis or GERD symptoms refractory to medical therapy, or adverse effects of medical therapy.

An 8-week course of PPI is needed to allow for healing; patients should not be considered nonresponders until after this, unless alarm symptoms are present

A trial comparing laparoscopic fundoplication with esomeprazole therapy found similar remission rates after 3 years and a higher rate with esomeprazole after 5 years.³⁶ While esomeprazole was associated with more symptoms of reflux compared with fundoplication, patients who underwent this surgery reported higher rates of dysphagia, flatulence, and bloating.

Antireflux surgery should be recommended with caution, as it can have severe side effects such as dysphagia, gas bloat syndrome, and flatulence and the intended effect may only be temporary, as up to 60% of patients will require antireflux medications regularly in the decade afterward.³⁷ Esophageal manometry should be obtained before surgery to screen for esophageal aperistalsis, as this is an absolute contraindication to the procedure. Furthermore, manometry will exclude other motility disorders that can present similarly to GERD as discussed. Of note, antireflux surgery is not recommended in PPI nonresponders.¹⁵

The Linx procedure (magnetic sphincter augmentation; Torax Medical Inc., Shoreview, MN) is a minimally invasive alternative. It involves laparoscopic insertion of a band of magnetic beads around the LES, which allows passage of food and then closes to prevent acid reflux. The procedure is associated with improvement in symptom scores and reduced need for PPI therapy but not with consistent reduction in esophageal acid exposure.³⁸

Roux-en-Y gastric bypass is a surgical option for morbidly obese patients. A prospective study with 53 patients showed an improvement in GERD symptoms, reflux esophagitis, and esophageal acid exposure for more than 3 years following bypass.³⁹

■ ENDOSCOPIC THERAPIES

Alternatively, several endoscopic treatments for GERD have been developed over the last

2 decades.⁴⁰ These include:

- Transoral incisionless fundoplication (TIF) using the Esophyx device (EndoGastric Solutions, Redmond, WA)
- Radiofrequency energy delivery to the LES (the Stretta procedure; Respiratory Technology Corporation, Houston, TX)
- Endoscopic anterior fundoplication using the Medigus ultrasonic surgical endostapler (Medigus, Omer, Israel).

Of these, the first 2 have the most evidence.

TIF involves creation of a partial gastric wrap around the lower esophagus with an Esophyx device mounted on the endoscope. TIF is associated with symptom control and PPI reduction or cessation for at least 6 years and is a viable option for a select group of GERD patients with small hiatal hernias and preserved esophageal function.

A large randomized trial comparing TIF with PPIs showed symptomatic control in 67% vs 45% patients. TIF was associated with a reduction in esophageal acid exposure time from 9.3% to 6.4% and DeMeester score reduction from 33.6 to 23.9.⁴¹

In 2018, a meta-analysis was performed to compare TIF with Nissen fundoplication, a sham procedure, and PPIs.⁴² TIF was associated with a larger increase in quality of life measures, while Nissen fundoplication had a greater ability to improve physiologic parameters associated with GERD including LES pressure and the percentage of time the pH was less than 4.

The Stretta device was developed in 2000 and works by delivering thermal energy to the LES, which is postulated to increase sphincter thickness through scar tissue deposition, thereby reducing reflux. However in a meta-analysis of randomized controlled trials, Stretta treatment did not reduce percentage of time when pH is less than 4 or increase LES pressure or ability to stop PPIs.⁴³ ■

Antireflux surgery should be recommended with caution, as it can have severe side effects

■ REFERENCES

1. Peery AF, Crockett SD, Murphy CC, et al. Burden and cost of gastrointestinal, liver, and pancreatic diseases in the United States: update 2018. *Gastroenterology* 2019; 156(1):254–272.e11. doi:10.1053/j.gastro.2018.08.063
2. Dent J, El-Serag HB, Wallander MA, Johansson S. Epidemiology of gastro-oesophageal reflux disease: a systematic review. *Gut* 2005; 54(5):710–717. doi:10.1136/gut.2004.051821
3. El-Serag HB. Time trends of gastroesophageal reflux disease: a systematic review. *Clin Gastroenterol Hepatol* 2007; 5(1):17–26. doi:10.1016/j.cgh.2006.09.016
4. Zagari RM, Fuccio L, Wallander MA, et al. Gastro-oesophageal reflux symptoms, oesophagitis and Barrett's oesophagus in the general population: the Loiano-Monghidoro study. *Gut* 2008; 57(10):1354–1359. doi:10.1136/gut.2007.145177
5. Wahlqvist P, Reilly MC, Barkun A. Systematic review: the impact of gastro-oesophageal reflux disease on work productivity. *Aliment Pharmacol Ther* 2006; 24(2):259–272. doi:10.1111/j.1365-2036.2006.02996.x
6. Vakil N, van Zanten SV, Kahrilas P, Dent J, Jones R; Global Consensus Group. The Montreal definition and classification of gastroesophageal reflux disease: a global evidence-based consensus. *Am J Gastroenterol* 2006;

- 101(8):1900–1920. doi:10.1111/j.1572-0241.2006.00630.x
7. Flegal KM, Carroll MD, Kit BK, Ogden CL. Prevalence of obesity and trends in the distribution of body mass index among US adults, 1999–2010. *JAMA* 2012; 307(5):491–497. doi:10.1001/jama.2012.39
 8. Becher A, Dent J. Systematic review: ageing and gastro-oesophageal reflux disease symptoms, oesophageal function and reflux oesophagitis. *Aliment Pharmacol Ther* 2011; 33(4):442–454. doi:10.1111/j.1365-2036.2010.04542.x
 9. Herregods TV, Bredenoord AJ, Smout AJ. Pathophysiology of gastroesophageal reflux disease: new understanding in a new era. *Neurogastroenterol Motil* 2015; 27(9):1202–1213. doi:10.1111/nmo.12611
 10. Smith JL, Opekun AR, Larkai E, Graham DY. Sensitivity of the esophageal mucosa to pH in gastroesophageal reflux disease. *Gastroenterology* 1989; 96(3):683–689. PMID:2914634
 11. Sung HJ, Cho YK, Moon SJ, et al. Role of acid and weakly acidic reflux in gastroesophageal reflux disease off proton pump inhibitor therapy. *J Neurogastroenterol Motil* 2012; 18(3):291–297. doi:10.5056/jnm.2012.18.3.291
 12. Weusten BL, Akkermans LM, vanBerge-Henegouwen GP, Smout AJ. Symptom perception in gastroesophageal reflux disease is dependent on spatio-temporal reflux characteristics. *Gastroenterology* 1995; 108(6):1739–1744. doi:10.1016/S0016-5085(95)90135-3
 13. Trimble KC, Pryde A, Heading RC. Lowered oesophageal sensory thresholds in patients with symptomatic but not excess gastro-oesophageal reflux: evidence for a spectrum of visceral sensitivity in GORD. *Gut* 1995; 37(1):7–12. doi:10.1136/gut.37.1.7
 14. Balaban DH, Yamamoto Y, Liu J, et al. Sustained esophageal contraction: a marker of esophageal chest pain identified by intraluminal ultrasonography. *Gastroenterology* 1999; 116(1):29–37. doi:10.1016/S0016-5085(99)70225-8
 15. Katz PO, Gerson LB, Vela MF. Guidelines for the diagnosis and management of gastroesophageal reflux disease. *Am J Gastroenterol* 2013; 108(3):308–328. doi:10.1038/ajg.2012.444
 16. Numans ME, Lau J, de Wit NJ, Bonis PA. Short-term treatment with proton-pump inhibitors as a test for gastroesophageal reflux disease: a meta-analysis of diagnostic test characteristics. *Ann Intern Med* 2004; 140(7):518–527. doi:10.7326/0003-4819-140-7-200404060-00011
 17. Kahrilas PJ, Hughes N, Howden CW. Response of unexplained chest pain to proton pump inhibitor treatment in patients with and without objective evidence of gastro-oesophageal reflux disease. *Gut* 2011; 60(11):1473–1478. doi:10.1136/gut.2011.241307
 18. Sami SS, Ragunath K. The Los Angeles classification of gastroesophageal reflux disease. *Video Journal and Encyclopedia of GI Endoscopy* 2013; 1(1):103–104. doi:10.1016/S2212-0971(13)70046-3
 19. Lundell LR, Dent J, Bennett JR, et al. Endoscopic assessment of oesophagitis: clinical and functional correlates and further validation of the Los Angeles classification. *Gut* 1999; 45(2):172–180. doi:10.1136/gut.45.2.172
 20. Gyawali CP, Kahrilas PJ, Savarino E, et al. Modern diagnosis of GERD: the Lyon consensus. *Gut* 2018; 67(7):1351–1362. doi:10.1136/gutjnl-2017-314722
 21. Singh M, Lee J, Gupta N, et al. Weight loss can lead to resolution of gastroesophageal reflux disease symptoms: a prospective intervention trial. *Obesity (Silver Spring)* 2013; 21(2):284–290. doi:10.1002/oby.20279
 22. Park SK, Lee T, Yang HJ, et al. Weight loss and waist reduction is associated with improvement in gastroesophageal disease reflux symptoms: a longitudinal study of 15,295 subjects undergoing health checkups. *Neurogastroenterol Motil* 2017; 29(5). doi:10.1111/nmo.13009
 23. Khan BA, Sodhi JS, Zargar SA, et al. Effect of bed head elevation during sleep in symptomatic patients of nocturnal gastroesophageal reflux. *J Gastroenterol Hepatol* 2012; 27(6):1078–1082. doi:10.1111/j.1440-1746.2011.06968.x
 24. Duroux P, Bauerfeind P, Emde C, Koelz HR, Blum AL. Early dinner reduces nocturnal gastric acidity. *Gut* 1989; 30(8):1063–1067. doi:10.1136/gut.30.8.1063
 25. Person E, Rife C, Freeman J, Clark A, Castell DO. A novel sleep positioning device reduces gastroesophageal reflux: a randomized controlled trial. *J Clin Gastroenterol* 2015; 49(8):655–659. doi:10.1097/MCG.0000000000000359
 26. Allampati S, Lopez R, Thota PN, Ray M, Birgisson S, Gabbard SL. Use of a positional therapy device significantly improves nocturnal gastroesophageal reflux symptoms. *Dis Esophagus* 2017; 30(3):1–7. doi:10.1111/dote.12495
 27. Carlsson R, Galmiche JP, Dent J, Lundell L, Frison L. Prognostic factors influencing relapse of oesophagitis during maintenance therapy with antisecretory drugs: a meta-analysis of long-term omeprazole trials. *Aliment Pharmacol Ther* 1997; 11(3):473–482. doi:10.1046/j.1365-2036.1997.00167.x
 28. Gralnek IM, Dulai GS, Fennerty MB, Spiegel BM. Esomeprazole versus other proton pump inhibitors in erosive esophagitis: a meta-analysis of randomized clinical trials. *Clin Gastroenterol Hepatol* 2006; 4(12):1452–1458. doi:10.1016/j.cgh.2006.09.013
 29. Vaezi MF, Yang YX, Howden CW. Complications of proton pump inhibitor therapy. *Gastroenterology* 2017; 153(1):35–48. doi:10.1053/j.gastro.2017.04.047
 30. Moayyedi P, Eikelboom JW, Bosch J, et al; COMPASS Investigators. Safety of proton pump inhibitors based on a large, multi-year, randomized trial of patients receiving rivaroxaban or aspirin. *Gastroenterology* 2019; 157(3):682–691.e2. doi:10.1053/j.gastro.2019.05.056
 31. Wolfe MM, Sachs G. Acid suppression: optimizing therapy for gastroduodenal ulcer healing, gastroesophageal reflux disease, and stress-related erosive syndrome. *Gastroenterology* 2000; 118(2 suppl 1):S9–S31. doi:10.1016/S0016-5085(00)70004-7
 32. Komazawa Y, Adachi K, Mihara T, et al. Tolerance to famotidine and ranitidine treatment after 14 days of administration in healthy subjects without *Helicobacter pylori* infection. *J Gastroenterol Hepatol* 2003; 18(6):678–682. doi:10.1046/j.1440-1746.2003.03041.x
 33. De Ruigh A, Roman S, Chen J, Pandolfino JE, Kahrilas PJ. Gaviscon double action liquid (antacid & alginate) is more effective than antacid in controlling post-prandial oesophageal acid exposure in GERD patients: a double-blind crossover study. *Aliment Pharmacol Ther* 2014; 40(5):531–537. doi:10.1111/apt.12857
 34. Johnson T, Gerson L, Hershcovici T, Stave C, Fass R. Systematic review: the effects of carbonated beverages on gastro-oesophageal reflux disease. *Aliment Pharmacol Ther* 2010; 31(6):607–614. doi:10.1111/j.1365-2036.2010.04232.x
 35. Grossi L, Spezzaferro M, Sacco LF, Marzio L. Effect of baclofen on oesophageal motility and transient lower oesophageal sphincter relaxations in GORD patients: a 48-h manometric study. *Neurogastroenterol Motil* 2008; 20(7):760–766. doi:10.1111/j.1365-2982.2008.01115.x
 36. Galmiche JP, Hatlebakk J, Attwood S, et al; LOTUS Trial Collaborators. Laparoscopic antireflux surgery vs esomeprazole treatment for chronic GERD: the LOTUS randomized clinical trial. *JAMA* 2011; 305(19):1969–1977. doi:10.1001/jama.2011.626
 37. Spechler SJ, Lee E, Ahnen D, et al. Long-term outcome of medical and surgical therapies for gastroesophageal reflux disease: follow-up of a randomized controlled trial. *JAMA* 2001; 285(18):2331–2338. doi:10.1001/jama.285.18.2331
 38. Bell R, Lipham J, Louie B, et al. Laparoscopic magnetic sphincter augmentation versus double-dose proton pump inhibitors for management of moderate-to-severe regurgitation in GERD: a randomized controlled trial. *Gastrointest Endosc* 2019; 89(1):14–22.e1. doi:10.1016/j.gie.2018.07.007
 39. Madalosso CA, Gurski RR, Callegari-Jacques SM, Navarini D, Mazzini G, Pereira Mda S. The impact of gastric bypass on gastroesophageal reflux disease in morbidly obese patients. *Ann Surg* 2016; 263(1):110–116. doi:10.1097/SLA.0000000000001139
 40. Rouphael C, Padival R, Sanaka MR, Thota PN. Endoscopic treatments of GERD. *Curr Treat Options Gastroenterol* 2018; 16(1):58–71. doi:10.1007/s11938-018-0170-6
 41. Hunter JG, Kahrilas PJ, Bell RC, et al. Efficacy of transoral fundoplication vs omeprazole for treatment of regurgitation in a randomized controlled trial. *Gastroenterology* 2015; 148(2):324–333.e5. doi:10.1053/j.gastro.2014.10.009
 42. Richter JE, Kumar A, Lipka S, Miladinovic B, Velanovich V. Efficacy of laparoscopic Nissen fundoplication vs transoral incisionless fundoplication or proton pump inhibitors in patients with gastroesophageal reflux disease: a systematic review and network meta-analysis. *Gastroenterology* 2018; 154(5):1298–1308.e7. doi:10.1053/j.gastro.2017.12.021
 43. Lipka S, Kumar A, Richter JE. No evidence for efficacy of radiofrequency ablation for treatment of gastroesophageal reflux disease: a systematic review and meta-analysis. *Clin Gastroenterol Hepatol* 2015; 13(6):1058–1067.e1. doi:10.1016/j.cgh.2014.10.013

Address: Prashanthi N. Thota, MD, FACP, Esophageal Center, Digestive Disease and Surgery Institute, A31, Cleveland Clinic, 9500 Euclid Avenue, Cleveland, OH 44195; thotap@ccf.org