

TABLE OF CONTENTS

FROM THE EDITOR

Cytokines and the still-baffling clinical biology of COVID-19 **381**

The primary culprit is not certain. Is it all immune damage, or is the continued persistence of coronavirus playing a role?

Brian F. Mandell, MD, PhD

COVID-19 CURBSIDE CONSULT

Clinical presentation and course of COVID-19 **384**

Information about the clinical presentation and course of COVID-19 is rapidly evolving.

Ryan Miller, DO; Kristin Englund, MD

Cytokine storm and the prospects for immunotherapy with COVID-19 **389**

Despite gaping holes in our knowledge, treatment is evolving.

Leonard H. Calabrese, DO

THE CLINICAL PICTURE

Firm lesion on the lateral thigh **394**

A 41-year-old man presented with concern about a lesion he had first noticed 6 years earlier.

Morteza Khodaei, MD, MPH; Eric Kim, MD, PhD

Mönckeberg medial sclerosis **396**

A man with chronic kidney disease presents with pain and ulceration of the fingers.

Anthony Stack, DO; Sandra Sheffield, DO; Karan Seegobin, MBBS; Satish Maharaj, MBBS

1-MINUTE CONSULT

Does a short QT interval increase the risk of cardiac death in healthy people? **398**

No, but it may warrant further investigation to determine if the patient is at risk.

Ahmed Subahi, MD; Ahmed S. Yassin, MD; Oluwole Adegba, MD; Mohamed Shokr, MD; Luis Afonso, MD

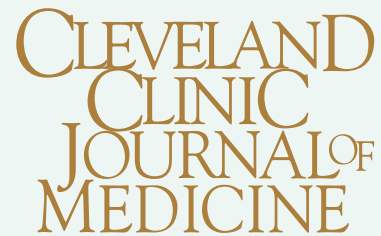
INTERPRETING KEY TRIALS

The role of ISCHEMIA in stable ischemic heart disease **401**

Decisions regarding treatment of stable ischemic heart disease must remain individualized.

Nikolaos Spiliadis, MD; Benjamin Zorach, MD; Kara Denby, MD; Stephen Ellis, MD

CONTINUED ON PAGE 380



Online Features

Access

Cleveland Clinic Journal of Medicine content is readily available to all and is free of charge at www.ccjm.org.

Services

- Navigate quickly to articles in current and past issues via links and pull-down menus at the top of the home page. Use the search function to find a specific article, or use the pull-down content menu to browse articles.
- Continuing medical education and maintenance of certification activities are accessible from the CME/MOC pull-down menu on the home page. Participation is free.
- Follow links on the home page to a calendar of upcoming CME events.
- Click on the PDF symbol at the top of any online article to read, download, or print the article in PDF format.

Social Networking

To post a *CCJM* article to Facebook or Twitter, just click on the icon at the top of any online article.

www.ccjm.org

CONTINUED FROM PAGE 378

COMMENTARY

Stable coronary artery disease: Intervene or not? 410

Stable coronary artery disease needs a patient-centered approach, and one size does not fit all.

Vinayak Nagaraja, MBBS, MS, MMed (Clin Epi), FRACP; A. Michael Lincoff, MD

REVIEW CME MOC

Glucocorticoid-induced osteoporosis: Insights for the clinician 417

Glucocorticoids cause significant bone loss, predominantly affecting trabecular bone, with consequent fragility fractures.

Shakaib Hayat, MD; Marina N. Magrey, MD

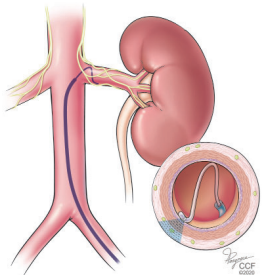
REVIEW CME MOC

Optimize your documentation to improve Medicare reimbursement 427

There's nothing more frustrating than not getting credit for work performed.

Ecler Ercole Jaqua, MD; Robert Chi, MD; Wessam Labib, MD, MPH; Marcos Uribe, MD; Juan Najarro, MD; Mary Hanna, MD

REVIEW CME MOC



Procedures and devices to treat resistant hypertension in chronic kidney disease 435

These treatments show potential. All but renal artery stenting are still experimental.

Rama Dilip Gajulapalli, MD; Johnny Chahine, MD; Florian Rader, MD; Ashish Aneja, MD

EDITORIAL

Device-based therapies for resistant hypertension in chronic kidney disease: The continuing quest for a cure 444

Device-based therapies have shown promise, but many points still need clarification.

George Thomas, MD

DEPARTMENTS

CME Calendar 383

CME/MOC Instructions 448

Upcoming Features

- Troponin measurement in acute coronary syndrome
- COVID-19 and coagulopathy
- Pneumonia in alcohol use disorder
- Rhinosinusitis: The role of imaging
- HPV and cervical cancer
- Current asthma guidelines
- Aneurysm surveillance: Thoracic, renal, splenic
- Weight-loss drugs: What are the barriers?



CLEVELAND CLINIC JOURNAL OF MEDICINE