

TABLE OF CONTENTS

FROM THE EDITOR

SGLT-2 inhibitors are potential game-changers (for more than diabetes) 588

Data from large clinical trials and improved understanding of the biologic effects of these drugs are changing expectations for the clinical course in patients with diabetes, as well as chronic kidney disease and heart failure.

Brian F. Mandell, MD, PhD

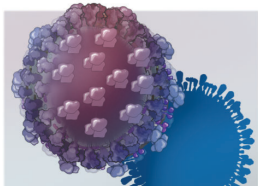
THE CLINICAL PICTURE

Gastrointestinal varicella-zoster virus infection 592

Esophagogastroduodenoscopy showed small, shallow ulcers and erosions surrounded by red haloes, spread diffusely throughout the stomach and duodenum.

Nobukazu Agatsuma, MD; Kaoru Tsujioka, MD; Yoshitaka Nishikawa, MD, PhD; Yasuki Nakatani, MD; Yukitaka Yamashita, MD, PhD

COMMENTARY



Another influenza season in the shadow of the COVID-19 pandemic 594

Flu season is upon us at the ominous milestone of more than 722,000 US deaths from COVID-19.

Sherif Beniamen Mossad, MD, FACP, FIDSA, FAST

THE CLINICAL PICTURE

Generalized acute cutaneous lupus erythematosus in a young female 598

A history of systemic lupus and discontinuation of medications for 3 months led to increased disease activity.

Omair Ali Khan, MBBS; Mahnoor Sherazi, MBBS; Sheharyar Raashid, MBBS; Attiya Tareen, MBBS, FCPS; Saba Aneeqa, MBBS

CONTINUED ON PAGE 587

Upcoming Features

- Current trends in contraception
- Venous outflow obstruction
- Cardiac considerations in liver transplantation



CLEVELAND
CLINIC
JOURNAL OF
MEDICINE

CONTINUED FROM PAGE 586

COMMENTARY **CME | MOC**

**SGLT-2 inhibitors in heart failure:
Time for broader eligibility and earlier initiation** **601**

SGLT-2 inhibitors remain vastly underused in clinical practice despite their broad cardiorenal benefits.

Enrico G. Ferro, MD; Bertram Pitt, MD; Deepak L. Bhatt, MD, MPH

MEDICAL GRAND ROUNDS

**Options for preserving fertility in women undergoing
gonadotoxic treatment** **607**

For females undergoing cancer therapy, proactive treatments can help preserve the possibility of having children.

Laura Detti, MD

REVIEW

**DXA and clinical challenges of fracture risk assessment
in primary care** **615**

Overdependence on dual-energy x-ray absorptiometry, especially for patient populations the test was not designed for, may lead to poor clinical decisions.

Susan Williams, MS, RD, MD, CCD, FACP, FACE; Leila Khan, MD; Angelo A. Licata, MD, PhD, FACP, FACE

REVIEW **CME | MOC**

**Spontaneous coronary artery dissection:
Principles of management** **623**

Once thought to be rare, it is increasingly recognized as a common cause of acute coronary syndrome, particularly in young women.

Nicole Pristera, MD; Pulkit Chaudhury, MD; Erik H. Van Iterson, PhD; Leslie S. Cho, MD

1-MINUTE CONSULT

**Should my older adult patients take aspirin
for primary prevention of cardiovascular disease?** **632**

For patients age 70 and older, recent evidence shows that the harms outweigh the benefits.

Robert M. Zimbroff, MD; Gina Ayers, PharmD, BCPS, BCGP; Kenneth Koncilja, MD

REVIEW

**Elevated hCG can be a benign finding in perimenopausal
and postmenopausal women** **635**

A search for the source of the elevation in perimenopausal and postmenopausal women who are not pregnant and have no disease or tumor may delay patient care.

Lea El Hage, MD; Betul Hatipoglu, MD

DEPARTMENTS

CME Calendar **590**

CME/MOC Instructions **640**