

# TABLE OF CONTENTS

**FROM THE EDITOR** .....

**The initial viral infection may be only part of the story** **476**

We clearly see that the coronavirus elicits syndromes far afield from respiratory tissues. But a virus eliciting effects seemingly distinct from the primary infection is nothing new.

Brian F. Mandell, MD, PhD

**THE CLINICAL PICTURE** .....

**Abdominal pseudohernia due to herpes zoster** **480**

A 66-year-old man presents with bulging and persistent burning pain in the right abdominal side for 4 days.

Junki Mizumoto, MD

**THE CLINICAL PICTURE** .....

**Leriche syndrome** **482**

Physical examination revealed pallor of the toes, cold extremities, dry skin, and absence of bilateral femoral pulses. The patient also disclosed erectile dysfunction.

Hiroki Matsuura, MD; Hiroyuki Honda, MD, PhD

**THE CLINICAL PICTURE** .....

**Dermatomyositis-related interstitial lung disease mimicking COVID-19 pneumonia** **484**

A subtype of myositis with characteristic skin rashes and ulcers, amyopathic or hypomyopathic symptoms, and rapidly progressive ILD.

Satoshi Hayano, MD; Kenichiro Tokunaga, MD; Yusuke Imamura, MD; Hideto Oshikawa, MD

**THE CLINICAL PICTURE** .....

**An uncommon cause of chest pain** **487**

Re-review of a “normal” chest radiograph provided valuable clues.

Salman Salahuddin, MD, DM, MRCP (UK)

CONTINUED ON PAGE 475

## Upcoming Features

- Coronary microvascular dysfunction
- Ketogenic diets for type 1 diabetes
- COVID-19: Preparing for the next wave



CLEVELAND  
CLINIC  
JOURNAL OF  
MEDICINE

CONTINUED FROM PAGE 474

COMMENTARY.....

**Teriparatide: Label changes and identifying patients for long-term use 489**

The changes leave clinicians with the challenge of identifying appropriate patients.

Paul D. Miller, MD, HDS (HON); E. Michael Lewiecki, MD; Kelly Krohn, MD; Elliott Schwartz, MD

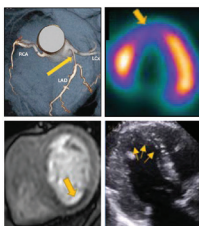
SYMPTOMS TO DIAGNOSIS ..... **CME MOC**

**An 86-year-old man with unexplained right-sided headache and vision loss 494**

Steroid treatment for suspected giant cell arteritis brought no improvement in vision or headache severity.

Marc Ohlhausen, BS; Eden Bernstein, MD; Craig D. Nielsen, MD, FACP

REVIEW .....



**Stress testing and noninvasive coronary imaging: What's the best test for my patient? 502**

A review of current tests, what they measure, their diagnostic and prognostic value, and their limitations.

Milad Matta, MD; Serge C. Harb, MD; Paul Cremer, MD; Rory Hachamovitch, MD, MSc; Chadi Ayoub, MD, PhD, FACC, FASE, FSCCT

REVIEW .....

**Medical, ethical, and legal aspects of end-of-life dilemmas in the intensive care unit 516**

Three hypothetical cases elucidate medical, ethical, and legal considerations in common end-of-life situations encountered in the ICU.

Jonathan Wiesen, MD; Christopher Donatelli, MD; Martin L. Smith, STD; Laurel Hyle, JD, MPH; Eduardo Mireles-Cabodevila, MD

DEPARTMENTS .....

**CME calendar 478**

**CME/MOC instructions 528**



Visit [WWW.CCJM.ORG](http://WWW.CCJM.ORG)  
Test your knowledge  
of clinical topics

