

TABLE OF CONTENTS

FROM THE EDITOR

Another vaccine article? Yes, but a different vaccine 607

As newer vaccines against *Streptococcus pneumoniae* have arrived, so have confusing recommendations and guidelines for the sequence and timing of administration.

Brian F. Mandell, MD, PhD

THE CLINICAL PICTURE.....

Spontaneous oral hematoma diagnosed as angina bullosa hemorrhagica 615

The lesions occur on the soft palate, buccal mucosa, and tongue, and only rarely on the masticatory mucosa such as the gingiva and hard palate.

Takeshi Onda, DDS, PhD; Kamichika Hayashi, DDS, PhD; Akira Katakura, DDS, PhD; Masayuki Takano, DDS, PhD

REVIEW

Geriatric update 2022: Preventing Alzheimer disease and more 617

Key topics include Alzheimer dementia, effects of frailty and social isolation, COVID-19 risks in patients with dementia, hospital-at-home programs, deprescribing antihypertensive drugs, bisphosphonate-related fractures, and cannabis use.

Melissa Morgan-Gouveia, MD; Kathleen Drago, MD, FACP; Patricia Harris, MD, MS; Meera Sheffrin, MD, MAS

SYMPTOMS TO DIAGNOSIS

Hypophosphatemia in a patient with an eating disorder 625

A 32-year-old woman referred from an eating disorder treatment center reported memory difficulty, trouble concentrating, and feeling “hazy.” She was taking oral potassium phosphate 3 times daily.

Maxwell J. Uetz, MD; Christopher D. Knapp, MD, MPH; Samuel T. Ives, MD

CONTINUED ON PAGE 606

Upcoming Features

- Nonalcoholic fatty liver disease
- ‘Daily labs’: A closer look at a common practice



CONTINUED FROM PAGE 602

1-MINUTE CONSULT

When should antithrombotic therapy be resumed after gastrointestinal bleeding? 630

The timing should be individualized after considering factors related to the bleeding event, thromboembolic risk, and patient comorbidities.

Dushyant Singh Dahiya, MD; Asim Kichloo, MD, FACP; Rawan Amir, MD; Farah Wani, MD

GUIDELINES TO PRACTICE

Update on pneumococcal vaccination in adults: Simpler is better 640

Recommendations have been updated in the hopes not only of preventing more cases of invasive pneumococcal disease, but also of making the recommendations easier to follow.

Craig D. Nielsen, MD, FACP; Joel A. Kammeyer, MD, MPH, FACP; Michael J. Tan, MD, FACP, FIDSA

REVIEW

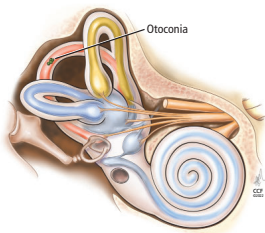
CME MOC

Reducing the risk of breast cancer 643

Breast cancer remains the most common malignancy in US women. Reducing this burden involves identification of high-risk individuals and personalized risk management.

Holly J. Pederson, MD; Zahraa Al-Hilli, MD; Allison W. Kurian, MD

REVIEW



Benign paroxysmal positional vertigo: Effective diagnosis and treatment 653

The authors review how to differentiate this balance disorder from others, and how best to treat it with position-changing maneuvers.

Shayna R. Cole, AuD, CCC-A; Julie A. Honaker, PhD, CCC-A

DEPARTMENTS

CME Calendar 613

CME/MOC Instructions 664

CME CREDIT TEST

Visit WWW.CCJM.ORG
 Test your knowledge
 of clinical topics and earn
AMA PRA Category 1 Credit™

CLEVELAND
 CLINIC
 JOURNAL OF
 MEDICINE