

TABLE OF CONTENTS

FROM THE EDITOR

Anchors away **652**

Before you read this, I recommend that you read the interesting article in this issue by Prakash et al, part of our Symptoms to Diagnosis series.

Brian F. Mandell, MD, PhD

THE CLINICAL PICTURE.....

A reticular eruption on the thighs **659**

During cold winter weather, the patient had been wearing an electric heating pad between the thighs.

Li-wen Zhang, MD; Juan Wu, MD; Tao Chen, MD, PhD; Rong-hua Xu, MD

1-MINUTE CONSULT

Is the *MTHFR* gene mutation associated with thrombosis? **661**

Clinicians should educate patients with this common polymorphism about the lack of evidence for associated thrombotic risk, and instead focus on modifiable risk factors for thrombosis.

Andrew Dhawan, MD, DPhil; Charis Eng, MD, PhD

1-MINUTE CONSULT

What is the role for terlipressin in hepatorenal syndrome? **664**

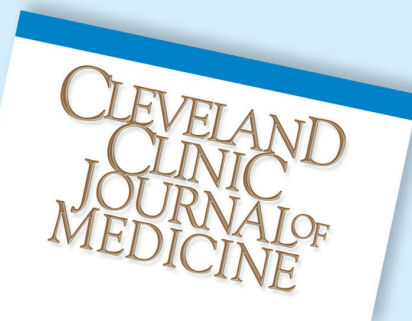
The drug is recommended as a first-line treatment of hepatorenal syndrome-related acute kidney injury, but it is associated with respiratory failure, especially in the setting of albumin administration, and certain comorbidities may increase the risk.

Stephanie N. Bass, PharmD; Aanchal Kapoor, MD; Christina C. Lindenmeyer, MD

CONTINUED ON PAGE 651

Upcoming Features

- When should patients be taking their BP medications?
- Obstructive sleep apnea: Current treatment options
- Grading the current consumer-grade wearable cardiac monitors



CONTINUED FROM PAGE 646

SYMPTOMS TO DIAGNOSIS

Elevated aminotransferases in a 62-year-old woman 669

Her medical history included gastroesophageal reflux disease and Sjögren syndrome. She had recently returned from travel to Malaysia.

Shahana Prakash, MD; Steven Moore, MD, PhD; Anthony Snow, MD; Kyle E. Brown, MD, FAASLD

REVIEW

CME | MOC

COVID-19: A management update 677

The authors examine current guidelines of the Infectious Diseases Society of America and the National Institutes of Health.

Kathryn Bash, MHSc, MSN, APRN-CNP; Gretchen Sacha, PharmD, BCCCP; Mani Latifi, MD

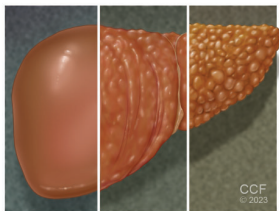
COMMENTARY

**The new GFR equations:
How will eliminating the race coefficient affect Black patients?** 685

The authors discuss the history of equations for the glomerular filtration rate and potential clinical consequences of the new equations.

Paul Merchant, MD; Crystal Gadegbeku, MD, FAHA, FACP, FASN; Ali Mehdi, MD, Med, FACP, FASN; George Thomas, MD, FACP; Georges Nakhoul, MD, Med; Jonathan Taliercio, DO, FASN

REVIEW

**Cirrhosis: Primary care approaches to screening,
immunization, and lifestyle modifications** 693

The authors review management of cirrhosis and complications such as esophageal varices and hepatocellular carcinoma, as well as chemical and medication exposures.

Asim Kichloo, MD; Michael Aljadah, MD; Michael Albosta, MD; Zain El-Amir, MD; Ghazaleh Goldar, MD; Muhammed Zatmar Khan, MD; Dushyant Singh Dahiya, MD; Farah Wani, MD

DEPARTMENTS

CME Calendar 657

CME/MOC Instructions 704

CME CREDIT TEST

Visit WWW.CCJM.ORG
Test your knowledge
of clinical topics and earn
AMA PRA Category 1 Credit™
and **ABIM MOC points**

CLEVELAND
CLINIC
JOURNAL OF
MEDICINE